

Phthalate and Bisphenol Exposure during Pregnancy and Offspring Nonverbal IQ

Michiel A. van den Dries,^{1,2} Mònica Guxens,^{1,3,4,5} Suzanne Spaan,⁶ Kelly K. Ferguson,⁷ Elise Philips,^{2,8,9} Susana Santos,^{2,9} Vincent W.V. Jaddoe,^{2,9} Akhgar Ghassabian,^{10,11,12} Leonardo Trasande,^{10,11,12,13,14} Henning Tiemeier,^{1,15} and Anjoeka Pronk⁶

¹Department of Child and Adolescent Psychiatry/Psychology, Erasmus MC, University Medical Centre, Rotterdam, Netherlands

²Generation R Study Group, Erasmus Medical Center, Rotterdam, Netherlands

³Barcelona Institute for Global Health, Barcelona, Spain

⁴Pompeu Fabra University, Barcelona, Spain

⁵Spanish Consortium for Research on Epidemiology and Public Health, Instituto de Salud Carlos III, Spain

⁶Department of Risk Analysis for Products in Development, TNO, Utrecht, Netherlands

⁷Epidemiology Branch, National Institute of Environmental Health Sciences, National Institutes of Health, Department of Health and Human Services, Durham, North Carolina, USA

⁸Department of Epidemiology, Erasmus MC, University Medical Centre, Rotterdam, Netherlands

⁹Department of Pediatrics, Erasmus MC, University Medical Centre, Rotterdam, Netherlands

¹⁰Department of Pediatrics, New York University School of Medicine, New York, New York, USA

¹¹Department of Environmental Medicine, New York University School of Medicine, New York, New York, USA

¹²Department of Population Health, New York University School of Medicine, New York, New York, USA

¹³New York University Wagner School of Public Service, New York, New York, USA

¹⁴New York University College of Global Public Health, New York, New York, USA

¹⁵Department of Social and Behavioral Sciences, Harvard T.H. Chan School of Public Health, Boston, USA

BACKGROUND: Prenatal exposures to phthalates and bisphenols are associated with impaired brain development in animals. However, epidemiological studies investigating the association between prenatal phthalate or bisphenol exposure and cognition have produced mixed findings and mostly had modest sample sizes and measured the exposure during the third trimester.

OBJECTIVE: We examined the association between pregnancy maternal urinary biomarkers of phthalate or bisphenol exposure and nonverbal intelligence quotient (IQ) in children 6 years of age.

METHOD: The study sample consisted of 1,282 mother–child pairs participating in the Generation R Study, a population-based birth cohort in Rotterdam, Netherlands (enrollment 2002–2006). We measured maternal urinary concentrations of 18 phthalate metabolites and 8 bisphenols at <18, 18–25, and >25 wks of gestation. Child nonverbal IQ was measured at 6 years of age using the Snijders-Oomen Nonverbal Intelligence Test–Revised. Linear regression models were fit for each of the three collection phases separately, the three collection phases jointly, and for the averaged prenatal exposure across pregnancy.

RESULTS: Higher urinary concentrations of phthalate metabolites during early pregnancy were associated with lower child nonverbal IQ score [e.g., B per 10-fold increase in summed low-molecular weight phthalates = -1.7 (95% CI: $-3.1, -0.3$)]. This association remained unchanged when adjusted for mid and late pregnancy exposures. We also observed an inverse association between late pregnancy di-*n*-octyl phthalate (DNOP) exposure and nonverbal IQ. Maternal urinary concentrations of bisphenols were not associated with child nonverbal IQ. There was no effect estimate modification by sex.

CONCLUSIONS: We did not observe that maternal biomarkers of bisphenol exposure are associated with nonverbal IQ. We found that phthalate exposure in early pregnancy and DNOP exposure in late pregnancy are associated with lower nonverbal IQ scores in children. Our results might suggest that particularly early pregnancy is a sensitive window of phthalate exposure, but future studies are needed to replicate our findings. <https://doi.org/10.1289/EHP6047>

Introduction

Phthalates and bisphenols are synthetic compounds incorporated in many products. For example, phthalates such as di-(2-ethylhexyl) phthalate (DEHP), dibutyl phthalate (DBP), di-*n*-octyl phthalate (DNOP), and benzyl butyl phthalate (BBP) are primarily used as plasticizers for polyvinyl chloride and exist in food packaging materials, floor materials, clothing, toys, and medical devices. DBPs are also used as solvents and fixatives in paint and cosmetics (Cefic

Chemdata International 2010; Sathyanarayana 2008; Schierow and Lee 2008). Bisphenol A (BPA) or common replacements such as bisphenol S (BPS) and bisphenol F (BPF) exist in products such as epoxy resin coatings of canned food containers, water bottles, storage containers, thermal paper, and baby bottles (Lehmler et al. 2018; Michałowicz 2014).

Phthalates and bisphenols are omnipresent in the environment, and these compounds have been detected in urine samples of mothers and their offspring (Casas et al. 2013). Prenatal exposure to these chemicals can occur because of their ability to cross the placental and blood–brain barriers (Schönfelder et al. 2002; Silva et al. 2004; Chou et al. 2011; Jensen et al. 2012). Studies suggest that prenatal phthalate and bisphenol exposure both interfere with the thyroid hormone system (Boas et al. 2009; Bonefeld-Jørgensen et al. 2007; Gao et al. 2017; Ghisari and Bonefeld-Jørgensen 2009; Lyche et al. 2009; Miodovnik et al. 2014), which is crucial for normal fetal brain development (Berbel et al. 2010). In addition, neurotoxic effects of phthalates and bisphenols may be mediated by anti-androgenic activity (Borch et al. 2006; Fang et al. 2017; Weiss 2012; Wolstenholme et al. 2011), disruption of brain dopaminergic activity (Bellinger 2013; Huang et al. 2017; Tanida et al. 2009), and interaction with peroxisome proliferator-activated receptors (Inadera 2015; Lyche et al. 2009; Miodovnik et al. 2014).

Studies in animals have shown that prenatal phthalate and bisphenol exposure impairs neurodevelopment in the offspring

Address correspondence to Henning Tiemeier, Department of Social and Behavioral Science, Harvard T.H. Chan School of Public Health, 677 Huntington Ave., Kresge Building, Room 619, Boston, MA 02215 USA. Email: tiemeier@hsph.harvard.edu

Supplemental Material is available online (<https://doi.org/10.1289/EHP6047>).

The spouse of H.T. is an employee of Eastman Chemical, a company that manufactures substitutes for *ortho*-phthalate plasticizers. All other authors declare they have no actual or potential competing financial interests.

Received 12 August 2019; Revised 22 May 2020; Accepted 10 June 2020; Published 27 July 2020.

Note to readers with disabilities: *EHP* strives to ensure that all journal content is accessible to all readers. However, some figures and Supplemental Material published in *EHP* articles may not conform to 508 standards due to the complexity of the information being presented. If you need assistance accessing journal content, please contact ehponline@niehs.nih.gov. Our staff will work with you to assess and meet your accessibility needs within 3 working days.

(Arcadi et al. 1998; Boberg et al. 2011; Kimura et al. 2016; X-J Li et al. 2013; Y Li et al. 2009; Poimenova et al. 2010; Sun et al. 2014; Tanida et al. 2009; Tian et al. 2010; Wolstenholme et al. 2011; Xu et al. 2012). With respect to phthalates, animal studies find inverse associations between prenatal exposure to DEHP and DBP and learning, memory, and brain development in the offspring (Arcadi et al. 1998; Boberg et al. 2011; X-J Li et al. 2013; Y Li et al. 2009; Tanida et al. 2009). In addition, prenatal exposure to DEHP can affect developmental plasticity of the hippocampus (Sun et al. 2014). Regarding bisphenols, animal studies have shown that gestational exposure to BPA was associated with alterations in brain morphology and brain function (Wolstenholme et al. 2011). Further, BPA-exposed rats and mice exhibit persistent learning and memory impairments (Poimenova et al. 2010; Tian et al. 2010; Xu et al. 2012) and low-dose BPA exposure disrupts hippocampal CA1 neuronal morphology, which is believed to persist into adulthood (Kimura et al. 2016; Tian et al. 2010; Xu et al. 2012).

However, epidemiological studies investigating the associations between prenatal phthalate or bisphenol exposure and cognitive functioning in children are limited and the findings are inconclusive. One study using mother–child pairs from inner-city New York reported that higher metabolite concentrations of DBP and diisobutyl phthalate metabolites measured in the third trimester were associated with lower intelligent quotient (IQ) score in 328 children at 7 years of age (Factor-Litvak et al. 2014). Similarly, other studies ($n = 150–417$) found that higher levels of DEHP metabolites during the third trimester were associated with a lower score on the mental development index (MDI) of the Bayley Scales of Infant Development at 0.5–2 years of age (Kim et al. 2011; Qian et al. 2019). Two studies found that third-trimester concentrations of DBP and mono(3-carboxypropyl) phthalate (mCPP) metabolites were inversely associated with the MDI at child age 2–3 y, but only in girls (Doherty et al. 2017; Whyatt et al. 2012). Another study found the averaged sum of high-molecular weight phthalates (HMWPs) and DEHP exposure across pregnancy to be inversely associated with IQ, but only in boys (Hyland et al. 2019). Yet, five other studies did not find any association between prenatal exposure to phthalates and cognition during the second (Kim et al. 2017; Li et al. 2019) and third trimester (Huang et al. 2015; Li et al. 2019; Nakiwala et al. 2018; Polanska et al. 2014) using data from 100–452 mother–child pairs. Research on bisphenol exposure mostly found little evidence of an association between prenatal exposure and child cognition. One study found an inverse association between prenatal BPA exposure measured in cord blood and offspring IQ at 7 years of age in 148 children (Lin et al. 2017). However, most other studies using maternal urine concentrations to determine exposure did not show an association between prenatal BPA exposure and cognitive functioning in 239–812 children at 1–8 years of age (Braun et al. 2011, 2017a, 2017b; Casas et al. 2015; Nakiwala et al. 2018; Stacy et al. 2017). Further, a recent study found first trimester exposure to a mixture of 26 endocrine-disrupting chemicals to be associated with lower IQ among boys (Tanner et al. 2020). Among a broad range of chemical biomarkers, the present study included phthalate metabolites and BPA, BPF, and BPS and identified BPF as the primary chemical of concern. In addition, concentrations of BPA, mono-ethyl phthalate (mEP), and monobenzyl phthalate (mBzP) had a considerable contribution to the overall mixture effect (Tanner et al. 2020).

The heterogeneity in epidemiological results may be explained by the fact that most of these studies had modest sample sizes, which may have limited the statistical power to consistently detect adverse associations. In addition, most studies measured prenatal exposure only during the third trimester, whereas other windows of susceptibility may exist (Selevan et al. 2000). Finally, only one

previous study investigated the association between prenatal exposure to BPS and BPF with IQ. To address these limitations, we studied a large cohort from the Generation R Study, which is characterized by detailed follow-up information of the child and three repeated measurements (early, mid, and late pregnancy) of urinary phthalate and bisphenol biomarkers, including BPF and BPS. We investigated the extent to which maternal exposure to phthalates or bisphenols during pregnancy are associated with offspring's non-verbal IQ at 6 years of age.

Methods

Study Participants and Follow-Up

Generation R is a prospective population-based birth cohort designed to identify early environmental and genetic determinants of growth and development (Kooijman et al. 2016). Briefly, all pregnant women who resided in the study area in Rotterdam, Netherlands, and had a delivery date between April 2002 and January 2006 were eligible. All eligible pregnant women who visited a midwife or obstetrician in Rotterdam were contacted by the Generation R Study staff for recruitment. The study staff were able to communicate with the pregnant women in Dutch, English, French, Portuguese, and Turkish. Among the 9,778 mothers who participated in the study, 8,879 (91%) were enrolled during pregnancy and the rest were enrolled during routine visits of the newborn to the child health centers. The enrollment procedure has been previously described in detail (Hofman et al. 2004; Jaddoe et al. 2006, 2008, 2010, 2012). Between February 2004 and January 2006, women provided spot urine specimens at the time of routine ultrasound examinations during early, mid, and late pregnancy. A total of 2,083 women provided a complete set of three urine specimens.

When the children turned 6 years of age, the families were invited to participate in an in-person follow-up visit to collect neurobehavioral data, biospecimens, and sociodemographic and health data. Of the 2,083 mother–child pairs with three urinary samples, 1,405 provided data at 6 years of age of the child. The availability of follow-up data was a requirement to allow studies of the associations between prenatal phthalates and bisphenol exposure and child health, including cognition. Of these 1,405 mother–child pairs, 1,282 had complete data on nonverbal IQ and comprised the study sample. Women in this subset had higher education and income levels, were slightly older, and were more likely to be of Dutch national origin than the broader Generation R cohort (Kooijman et al. 2016).

The study protocol underwent human subjects review at Erasmus Medical Center, Rotterdam, Netherlands (MEC 198.782.2001.31, MEC-2007-413). Mothers provided written informed consent for themselves and their children.

Bisphenol and Phthalate Measurements in Urine

Maternal spot urine specimens were collected during early (mean = 13.3 wks of gestation, range = 6.5–17.9 wks), mid (mean = 20.4 wks of gestation, range = 18.1–24.9 wks), and late pregnancy (mean = 30.3 wks of gestation, range = 27.4–34.5 wks). Details on urine specimen collection have been described elsewhere (Kruithof et al. 2014). Briefly, all urine samples were collected (at 0800–1000 hours) in 100-mL polypropylene urine collection containers that were kept for a maximum of 20 h in a cold room (4°C) before being frozen at –20°C in 20-mL aliquots in 25-mL polypropylene vials. The urine specimens were shipped on dry ice in 4-mL polypropylene vials to the Wadsworth Center, New York State Department of Health,

Albany, New York, for analysis of phthalate metabolite and bisphenol concentrations.

A detailed description of the analytical procedure is given elsewhere (Philips et al. 2018). Briefly, quantitative detection of phthalate metabolites was achieved by using a solid-phase extraction method followed by enzymatic deconjugation of the glucuronidated phthalate monoesters coupled with high performance liquid chromatography electrospray ionization–tandem mass spectrometry (HPLC-ESI-MS/MS) (Asimakopoulos et al. 2016), which allowed for the rapid detection of 18 metabolites of phthalates with limits of detection (LODs) in the range of 0.008–0.89 ng/mL. Quantitative detection of bisphenols was realized using a liquid–liquid extraction method followed by enzymatic deconjugation of the glucuronidated bisphenols coupled with HPLC-ESI-MS/MS, which permitted the detection of eight biomarkers of bisphenols (including BPA, BPF, and BPS) with an LOD range of 0.03–0.79 ng/mL. Similarly, samples were analyzed for creatinine using HPLC-ESI-MS/MS. Quantification of calibration check standards resulted in an LOD of 0.30 ng/mL.

Exposure biomarkers were excluded from further statistical analyses if more than 80% of the study population had concentrations below the LOD. Urinary biomarkers for exposure to phthalates were grouped according to their parent compound, biologic activity, and source of exposure in order to limit multiple comparisons. Phthalate groups included low-molecular weight phthalates (LMWPs), HMWPs, DEHP, DNOP, and phthalic acid (PA). For the LMWP group, we summed mono-methyl phthalate (mMP), mEP, mono-*n*-butyl phthalate (mBP), and mono-isobutyl phthalate (mIBP) metabolite concentrations. For the HMWP group, we summed mono-(2-ethyl-5-carboxypentyl) phthalate (mECP), mono-(2-ethyl-5-hydroxyhexyl) phthalate (mEHHP), mono-(2-ethyl-5-oxohexyl) phthalate (mEOHP), mono-[(2-carboxymethyl) hexyl] phthalate (mCMHP), mCPP, mBzP, mono-hexyl phthalate (mHxP), and mono-2-heptyl phthalate (mHpP) metabolite concentrations. For the DEHP group, we summed mECP, mEHHP, mEOHP, and mCMHP metabolite concentrations and used mCPP metabolite concentrations as a proxy for DNOP exposure. Finally, PA is an end metabolite of all phthalates. PA metabolite concentrations were therefore analyzed separately as a proxy for total phthalate exposure. Regarding bisphenol concentrations, we calculated the sum for total bisphenol concentrations. Prior to the statistical analyses, all concentrations below the LOD were replaced with the LOD divided by the square root of 2 (Hornung and Reed 1990).

Nonverbal IQ at Child Age 6 Years

Children's nonverbal IQ was assessed by administering the Mosaics and Categories subtests from the Snijders-Oomen Nonverbal Intelligence Test–Revised (SON-R), a reliable and well-validated instrument (Jenkinson et al. 1996; Moore et al. 1998; Tellegen et al. 1998). The correlation between the total score of the SON-R 2.5–7 and the performance IQ score of the Wechsler Preschool and Primary Scale of Intelligence has been reported to be between 0.60 and 0.83, and the average reliability of the SON-R 2½–7 IQ score was 0.90 (Jenkinson et al. 1996; Moore et al. 1998; Tellegen et al. 2005). Further, the test is regarded as highly reliable and rated good (3 of 3) by the commission of Netherlands Institute for Psychologists. The two language-independent subtests that included items that probe visuospatial and abstract reasoning abilities were selected because of the multiethnic composition of the Generation R Study. Subtest raw test scores were converted into age-standardized nonverbal IQ scores. These standardized scores, based on the two subtests, correlated well ($r=0.86$) with those based on the complete instrument (Ghassabian et al. 2011).

Additional Data Collection

Maternal reproductive, sociodemographic, and cognitive data were assessed by questionnaires and/or observations. During the first prenatal visit, height, and weight were measured, but prepregnancy weight was self-reported by participants. These data were used to calculate body mass index (BMI). In addition, data was collected on maternal age (years), parity (0, 1, or ≥ 2), smoking (no smoking during pregnancy, smoking until pregnancy recognized, and continued smoking during pregnancy), alcohol intake during pregnancy [no alcohol consumption during pregnancy, alcohol consumption until pregnancy recognized, continued occasionally (< 1 glass/wk), and continued frequently (≥ 1 glass/wk)], marital status (married/partner or single), household total net income [$< 1,200$ euros/month (i.e., below the Dutch social security level), 1,200–2,000 euros/month, $> 2,000$ euros/month], highest completed education level [low (< 3 y at general secondary school) intermediate (≥ 3 y of secondary education), and high (university degree or higher vocational training)], ethnicity (Dutch national origin, other-Western, and non-Western), and folic acid intake (none, started in first 10 wks of pregnancy, and started preconception). Maternal IQ was examined when mother–child pairs attended the 6-y examination and was assessed using a computerized Ravens Advanced Progressive Matrices Test, Set I (McKinzey et al. 2003). The test is a 12-item reliable and validated short version of the Raven's Progressive Matrices to assess nonverbal cognitive ability (Chiesi et al. 2012). The consumption of fruit and vegetables was assessed in the first trimester using a modified version of a validated food frequency questionnaire and was adjusted for energy intake (Steenweg-de Graaff et al. 2012). Except for BMI (12%), smoking (10%), income (15%), folic acid intake (21%), and fruit and vegetable intake (25%), the percentage of missing values was below 10%.

Statistical Methods

Urinary phthalate metabolite and bisphenol concentrations were expressed on a creatinine basis and \log_{10} transformed (in micrograms per gram creatinine). Missing phthalate metabolite and bisphenol concentration values ($n=13$ with missing data in one or two urinary collection periods during pregnancy) and all missing covariate data were imputed 10 times with the multivariate imputation by chained equations method in R (version 3.5.3; R Development Core Team) (van Buuren and Groothuis-Oudshoorn 2011). Urinary BPA and PA metabolite concentrations and the child nonverbal IQ score were included as predictors for the imputation of covariates. The outcome variable child nonverbal IQ was not imputed. We calculated intraclass correlation coefficients (ICCs) for individual measurements, for example, during early pregnancy (single-rater, relevant to the time-specific analyses), and for the mean of the three measurements across pregnancy (mean of k raters), using two-way mixed-effects models with absolute agreement (Koo and Li 2016). Further, we first performed regression analyses to estimate the associations of grouped phthalate and bisphenol urinary concentrations with nonverbal IQ for each collection phase (gestational age < 18 , 18–25, and > 25 wks). Second, a mutually adjusted model was fitted in which the association of prenatal phthalate and bisphenol urinary concentrations from each time period on nonverbal IQ were jointly estimated. To test whether the association between prenatal urinary concentrations of phthalate metabolites and bisphenols and nonverbal IQ differed across time windows of exposure ($p_{\text{interaction}} < 0.1$), we used the multiple informant method, in which different exposure windows are treated as informants (Sánchez et al. 2011). We chose this strategy to identify possible windows of susceptibility and to be able to compare our results with other studies that used a single spot urine sample in pregnancy to determine phthalate and bisphenol concentrations. Third, we carried out

regression analyses to estimate the association between the averaged prenatal urinary concentrations across pregnancy and nonverbal IQ. Urinary metabolite concentrations of phthalates and (especially) bisphenol concentrations vary over time. Therefore, the average is most likely a better approximation of each participant's exposure during pregnancy than any exposure measurement on its own. Fourth, we presented restrictive cubic splines for untransformed grouped biomarker concentrations that were predictive of nonverbal IQ. Finally, several studies have suggested that sex may be a potential effect estimate modifier in the association of prenatal exposure to phthalates and bisphenols and neurodevelopmental outcomes (Braun et al. 2011; Casas et al. 2015; Doherty et al. 2017; Factor-Litvak et al. 2014; Hyland et al. 2019; Kim et al. 2011; Stacy et al. 2017; Whyatt et al. 2012). We therefore explored potential effect modification by sex via stratification, interaction terms, and augmented product terms (Buckley et al. 2017) ($p_{\text{interaction}} < 0.05$).

We present results from unadjusted and adjusted analyses. The adjustment variables were maternal age (continuous), ethnicity (categorical), education (categorical), income (categorical), marital status (categorical), alcohol consumption during pregnancy (categorical), maternal nonverbal IQ (continuous), prepregnancy BMI (continuous), parity (categorical), smoking during pregnancy (categorical), child sex (categorical), and child age at assessment (continuous). These potential confounders were selected *a priori* defined with a directed acyclic graph (DAG) (Textor et al. 2016) based on previous studies of prenatal phthalate and bisphenol exposure and child neurodevelopment and on biologically plausible covariate–exposure and covariate–outcome associations observed in our data (see Figure S1).

Sensitivity Analyses

Several sensitivity analyses were performed. First, we used another common method to adjust for creatinine by refitting visit-specific and averaged models, with concentrations expressed in nanograms per milliliter and creatinine concentration added as a separate covariate. We performed this sensitivity analyses to facilitate comparison with previous studies investigating prenatal exposure to nonpersistent chemicals and neurodevelopment that have used this adjustment method. Second, we performed post hoc analyses in which we explored the associations of individual phthalate metabolite and bisphenol concentrations with nonverbal IQ because individual phthalates and bisphenols within the summed groups may have different neurotoxic effects. Third, we used inverse probability weighting (stabilized weights) to correct for potential selection bias (Cole and Hernán 2008) and to provide results representative for the full Generation R Study cohort ($n = 9,901$) given that children included in the analysis ($n = 1,282$) were more likely to have parents who were of Dutch national origin, older, and from a higher socioeconomic (Kooijman et al. 2016). Baseline characteristics significantly different ($p < 0.20$) between the initially recruited cohort and the current analysis sample are presented in Table S1. Fourth, because diet and the intake of healthy nutrients may confound the association between prenatal phthalate and bisphenol exposure (e.g., food packaging) and child cognition (e.g., healthy nutrients), we performed a sensitivity analyses in which we additionally adjusted for maternal fruit, vegetables, and folic acid intake. Fifth, to correct for multiple hypothesis testing, each p -value was compared with a threshold, defined as 0.05 divided by the effective independent number of tests (Li et al. 2012). The corrected p -value was calculated based on the correlation structure between the phthalate metabolite groups (LMWP, HMWP, DEHP, DNOP, and PA) for each time point separately (corrected $p < 18$ wks of gestation = 0.02, 18–25 wks of gestation = 0.018,

>25 wks of gestation = 0.017), and for the average exposures (corrected $p = 0.017$).

Results

Sample Characteristics

At enrollment, most of the participating women were between 30 and 35 years of age (43%), nulliparous (61%), Dutch (54%), married (89%), and highly educated (50%) (Table 1). A large group had a prepregnancy BMI of between 18.5 and 25 (70%), a high income (68%), and did not consume alcoholic beverages (42%) or smoke (75%) during pregnancy.

Phthalate and Bisphenol Concentrations

The median LMWP metabolite concentrations for <18, 18–25, and >25 wks of gestation were 240, 103, and 232 $\mu\text{g/g}$ creatinine, respectively (Table 2). The median HMWP measured at <18, 18–25, and >25 wks of gestation were 69, 33, and 52 $\mu\text{g/g}$ creatinine. Total bisphenol concentrations comprised mostly BPA, and the median total bisphenol concentrations for <18, 18–25, and >25 wks of gestation were 2, 1, and 2 $\mu\text{g/g}$ creatinine, respectively. Descriptive statistics of the individual biomarkers from our study sample can be found in Tables S2 and S3. The ICC for the grouped phthalate metabolite concentrations varied between 0.2 and 0.4 for a single measurement and varied between 0.4 and 0.6 for the mean of the three measurements (see Table S4). Regarding the bisphenol group, the ICCs for a single-measurement (0.05) and for the mean of the three measurements (0.14) were poor.

Associations with Nonverbal IQ

Creatinine-adjusted LMWP, DNOP, and PA metabolite concentrations at <18 wks of gestation were significantly associated with child nonverbal IQ score (Table 3). For example, a 10-fold higher LMWP, DNOP, or PA metabolite concentration was associated with lower nonverbal IQ scores of 1.7 points [95% confidence interval (CI): $-3.1, -0.3$], 2.0 points (95% CI: $-3.7, -0.2$), and 1.9 points (95% CI: $-3.6, -0.3$), respectively. The associations for HMWP [$B = -1.8$ (95% CI: $-3.6, 0.0$)], and DEHP [$B = -1.7$ (95% CI: $-3.5, 0.1$)] metabolite concentrations with nonverbal IQ were comparable in magnitude. When adjusted for mid and late pregnancy exposures, the associations of child nonverbal IQ with grouped phthalate metabolite concentrations were similar. Mid and late pregnancy concentrations of grouped phthalate metabolites were generally not significantly associated with nonverbal IQ. However, a 10-fold increase in DNOP metabolite concentration at >25 wks of gestation was associated with a 2.4-point lower nonverbal IQ score (95% CI: $-4.8, 0.0$). Further, the significant interaction terms between LMWP, HMWP, DNOP, and PA metabolite concentrations and timing of exposure ($p = 0.06$, $p = 0.09$, $p = 0.03$, and $p = 0.05$, respectively) suggested that the potential effects of prenatal LMWP, HMWP, DNOP, and PA metabolite concentrations on nonverbal IQ might differ depending on the timing of exposure. No significant interaction terms were observed for DEHP metabolite concentrations and timing of exposure. Further, compared with the associations observed at <18 wks of gestation, we observed similar estimates in terms of magnitude for averaged LMWP [$B = -1.7$ (95% CI: $-3.7, 0.4$)] and PA [$B = -1.8$ (95% CI: $-4.6, 1.0$)] metabolite concentrations, and a greater estimate in terms of magnitude for averaged DNOP metabolite concentrations [$B = -3.0$ (95% CI: $-6.0, 0.0$)]. Finally, representative restrictive cubic splines for untransformed grouped phthalate metabolite concentrations at <18 wks of gestation and DNOP metabolite concentrations at >25 wks of gestation (see Figure S2) indicated a slightly

Table 1. Characteristics of study participants (*n* = 1,282).

Maternal characteristics ^a	Percentages	Phthalic acid ^b		Bisphenols ^c		Nonverbal IQ ^d
		Median	P25, P75	Median	P25, P75	Mean ± SD
Age (y)						
<20	2.0	109.2	65.4, 162.5	1.5	1.2, 2.6	94 ± 15
20–<25	11.5	85.5	61.9, 123.9	1.7	1.1, 2.8	94 ± 14
25–<30	26.8	82.6	52.1, 129.7	1.7	1.1, 2.8	102 ± 15
30–<35	42.9	84.7	52.5, 131.8	1.9	1.3, 2.9	104 ± 16
≥35	16.8	85.8	54.5, 135.5	1.9	1.1, 2.9	104 ± 13
Prepregnancy BMI (kg/m ²)						
<18.5	2.5	88.6	45.4, 123.5	1.9	1.3, 3.1	102 ± 16
18.5–<25	69.8	79.9	51.1, 124.3	1.8	1.1, 2.8	103 ± 15
25–<30	19.1	95.6	58.2, 146.0	2.1	1.3, 3.3	100 ± 15
≥30	8.6	95.0	67.7, 142.0	1.8	1.2, 3.0	98 ± 17
Parity						
0	60.5	86.0	54.0, 133.9	1.8	1.2, 2.8	103 ± 15
1	28.2	79.9	52.5, 119.3	1.9	1.2, 3.0	102 ± 15
≥2	11.3	88.2	54.2, 139.8	1.7	1.1, 2.8	98 ± 15
Ethnicity						
Dutch	53.9	81.1	50.4, 131.8	1.9	1.2, 2.9	106 ± 15
Other-Western	12.4	78.2	52.9, 128.6	1.7	1.2, 2.5	102 ± 14
Non-Western	33.7	88.3	58.7, 132.9	1.8	1.1, 2.9	96 ± 15
Education ^e						
Low	18.9	95.2	65.0, 151.7	1.8	1.2, 2.8	96 ± 15
Intermediate	30.7	85.9	55.3, 137.0	1.9	1.2, 3.1	100 ± 14
High	50.4	76.2	48.8, 122.1	1.8	1.1, 2.8	106 ± 14
Household income (euros/month)						
<1,200	15.4	91.1	62.4, 135.9	1.6	1.1, 2.8	95 ± 15
1,200–2,000	17.0	86.9	56.2, 137.3	1.9	1.3, 3.0	100 ± 15
>2,000	67.6	81.2	50.7, 127.4	1.8	1.2, 2.9	105 ± 14
Marital status						
Married/living with partner	88.5	82.8	52.0, 128.9	1.8	1.2, 2.9	103 ± 15
No partner	11.5	96.2	67.7, 151.0	1.8	1.1, 3.1	99 ± 15
IQ score						
≤85	22.5	91.3	58.3, 145.5	1.9	1.1, 2.9	96 ± 15
>85–≤100	43.3	86.9	55.6, 134.8	1.8	1.2, 2.7	102 ± 14
>100–<115	17.9	79.3	50.8, 125.2	1.8	1.2, 2.8	105 ± 14
≥115	16.3	72.9	47.3, 118.6	1.9	1.3, 3.1	107 ± 16
Smoking						
No smoking during pregnancy	75.3	78.7	51.5, 122.7	1.8	1.1, 2.8	103 ± 15
Until pregnancy recognized	10.2	97.6	62.8, 140.1	2.0	1.4, 3.2	101 ± 14
Continued during pregnancy	14.5	105.6	71.2, 154.8	1.9	1.2, 3.1	97 ± 15
Alcoholic beverage consumption						
No alcohol consumption	42.1	86.5	56.6, 137.6	1.8	1.1, 2.8	99 ± 15
Until pregnancy recognized	17.0	78.5	52.4, 132.7	1.7	1.1, 2.7	103 ± 14
Continued occasionally ^f	35.2	85.5	51.3, 124.9	2.0	1.3, 3.0	105 ± 16
Continued frequently ^g	5.8	74.6	48.1, 129.7	2.0	1.4, 3.1	105 ± 14
Infant characteristics	Percentages	Median	P25, P75	Median	P25, P75	Mean ± SD
Sex of infant at birth						
Male	50.5	84.5	52.6, 130.7	1.9	1.2, 3.0	102 ± 16
Female	49.5	84.1	53.7, 132.3	1.7	1.2, 2.7	101 ± 15

Note: BMI, body mass index; IQ, intelligence quotient; P, percentile; SD, standard deviation.

^aThere were missing observations for BMI (*n* = 157), parity (*n* = 8), ethnicity (*n* = 13), education (*n* = 60), household income (*n* = 193), marital status (*n* = 69), maternal IQ (*n* = 34), smoking (*n* = 132), and alcohol consumption (*n* = 91).

^bAverage total phthalic acid in micrograms per gram creatinine by category of characteristics.

^cAverage total bisphenols in micrograms per gram creatinine by category of characteristics.

^dNonverbal IQ by category of characteristics.

^eLow: no education finished, primary education, lower vocational training, intermediate general school or <3 y at general secondary school. Intermediate: ≥3 y of secondary education, intermediate vocational training or first year of higher vocational training. High: University degree or higher vocational training.

^fLess than 1 glass/wk.

^gOne or more glasses/wk for at least two trimesters.

steeper inverse association between exposure and outcome at lower levels of exposure.

Effect Estimate Modification by Sex

No effect estimate modification by sex was observed for the association between maternal urinary concentrations of grouped phthalate metabolite concentrations and nonverbal IQ (see Table S5). Similarly, there was no effect estimate modification by sex for the association between maternal urinary bisphenol concentrations and nonverbal IQ.

Sensitivity Analyses

First, the results with concentrations expressed as nanograms per milliliter and creatinine concentration added as a separate covariate were similar to the results of the main analyses using creatinine-corrected concentrations (see Table S6). Second, associations between individual urine phthalate metabolite concentrations at <18 wks of gestation and nonverbal IQ scores were inverse for all metabolites except for mHxP. Next, associations with mEP, mCMHP, and mCPP remained significant after confounder adjustment (Figure 1; see also Table S7). For example,

Table 2. Descriptive statistics of creatinine-adjusted phthalate and bisphenol concentrations in urine samples measured in pregnancy.

Variables	<i>n</i>	Min	P25	P50	P75	Max
Phthalate metabolite concentrations (μg/g creatinine) ^a						
LMWP metabolites (weeks of gestation)						
<18	1,274	0.4	109.5	239.5	603.3	102,789.2
18–25	1,270	4.3	46.8	102.6	238.0	36,050.2
>25	1,269	21.1	103.0	232.3	530.5	8,131.3
HMWP metabolites (weeks of gestation)						
<18	1,274	0.6	39.6	68.5	126.6	2,837.4
18–25 ^b	1,270	2.3	19.3	33.1	59.0	15,577.1
>25 ^b	1,269	3.6	35.0	52.3	81.9	1,683.6
DEHP metabolites (weeks of gestation)						
<18	1,274	0.3	31.4	55.2	103.0	2,821.2
18–25	1,270	1.8	14.4	25.0	46.3	15,574.4
>25	1,269	3.2	29.6	45.0	71.0	1,673.5
DNOP metabolites (weeks of gestation)						
<18	1,274	0	0.9	1.6	2.8	106.5
18–25	1,270	0	0.4	0.8	1.4	65.8
>25	1,269	0	1.2	1.9	3.0	72.0
PA (weeks of gestation)						
<18	1,274	0.6	33.8	63.8	123.4	12,433.4
18–25	1,270	4.3	56.5	111.6	250.1	2,885.2
>25	1,269	2.6	44.2	73.9	127.1	1,562.4
Total bisphenol concentrations [weeks of gestation (μg/g creatinine)]						
<18 ^c	1,274	0.1	1.0	2.1	5.2	982.8
18–25 ^d	1,270	0	0.6	1.2	2.5	277.6
>25 ^e	1,269	0.1	1.1	2.0	4.2	145.4

Note: Concentrations below the LOD were imputed with LOD divided by the square root of 2. DEHP, di-2-ethylhexylphthalate metabolite; DNOP, di-*n*-octylphthalate metabolite; HMWP, high-molecular weight phthalate metabolite; LMWP, low-molecular weight phthalate metabolite; LOD, limit of detection; max, maximum; min, minimum; P, percentile; PA, phthalic acid.

^aPhthalate metabolites are grouped into the following categories: LMWP metabolites (sum of mono-methyl phthalate, mono-ethyl phthalate, mono-isobutyl phthalate, and mono-*n*-butyl phthalate); HMWP metabolites [sum of mono-(2-ethyl-5-carboxypentyl) phthalate, mono-(2-ethyl-5-hydroxyhexyl) phthalate, mono-(2-ethyl-5-oxohexyl) phthalate, mono-[(2-carboxymethyl)hexyl] phthalate, mono(3-carboxypropyl) phthalate, mono-benzyl phthalate, mono-hexyl phthalate, and mono-2-heptyl phthalate]; DEHP metabolites: [sum of mono (2-ethyl-5 carboxypentyl)phthalate, mono (2-ethyl-5 hydroxyhexyl)phthalate, mono-(2-ethyl-5-oxohexyl)phthalate, and mono-[(2-carboxymethyl)hexyl]phthalate]; DNOP metabolites [mono(3-carboxypropyl) phthalate]; and PA (a proxy for total phthalate exposure).

^bWith the exclusion of mono-hexyl phthalate, and mono-2-heptyl phthalate metabolite concentrations.

^cTotal bisphenol: sum of bisphenol A, bisphenol F, and bisphenol S.

^dTotal bisphenol: sum of bisphenol A and bisphenol S.

^eTotal bisphenol: sum of bisphenol A and bisphenol F.

the mean nonverbal IQ score was 1.3 points lower (95% CI: –2.4, –0.2) in association with a 10-fold increase in urine mEP concentration at <18 wks of gestation. Most mid and late pregnancy concentrations of phthalate metabolites were not significantly associated with nonverbal IQ. However, a 10-fold increase mCPP metabolite concentrations at >25 wks of gestation was associated with a 2.4-point lower nonverbal IQ score (95% CI: –4.8, 0.0). As compared with the associations observed at <18 wks of gestation, when we observed similar estimates in terms of magnitude for averaged mEP and mCMHP metabolite concentrations as well as a greater estimate in terms of magnitude for averaged mCPP metabolite concentrations. No associations were observed for the BPA, BPS, and BPF. Third, the results using inverse probability weighting to correct for potential selection bias (see Table S8) and the results in which we additionally

adjusted for diet (see Table S9) were similar to the main results. Fourth, when the main results were corrected for the effective independent number of tests, the adjusted and mutually adjusted associations of maternal LMWP metabolite concentrations at <18 wks of gestation with nonverbal IQ remained significant. Similarly, the adjusted association between PA metabolite concentrations at <18 wks of gestation with nonverbal IQ survived the multiple testing correction.

Discussion

In this large population-based study, we consistently observed that early pregnancy phthalate exposure was associated with lower child nonverbal IQ scores at 6 years of age. Urinary metabolite concentrations of early pregnancy LMWP, HMWP, DEHP, DNOP, and PA were associated with lower nonverbal IQ. We also found an inverse association between late pregnancy DNOP exposure and nonverbal IQ. Our findings did not support an association between other mid and late pregnancy grouped phthalate exposures, and we found little or no evidence of an association between prenatal bisphenol exposure and child nonverbal IQ. Finally, our results did not support effect modification by sex.

The results from our study may help clarify the so-far inconclusive results of epidemiological studies investigating the effect of prenatal exposure to phthalates on cognitive functioning. To our knowledge, most other previous studies have examined phthalate exposure during mid or late pregnancy. We did not find clear evidence for an association between mid and late pregnancy phthalate exposure and offspring IQ. Consistent with our results, previous studies have also found that prenatal phthalate metabolite concentrations measured at 14–27 wks of gestation (Kim et al. 2017), at 22–29 wks of gestation (Nakiwala et al. 2018), and at 26–36 wks of gestation (Huang et al. 2015) were not associated with IQ score measured in children. Similarly, Li et al. (2019) assessed the association between mid (range: 10–23 wks of gestation) and late pregnancy (19–35 wks of gestation) biomarkers of phthalate exposure and child IQ and did not find an association for most phthalate metabolite concentrations. However, they did report an inverse association for mid mBzP metabolite concentrations. Moreover, contrary to our results, several studies found third-trimester LMWP, DEHP, and HMWP exposure to be associated with cognition. A study demonstrated that a log-unit higher mBP and mIBP metabolite concentrations resulted in 2.7 lower IQ scores [mBP = (–2.7, 95% CI: –4.3, –1.1), mIBP = (–2.7, 95% CI: –4.2, –1.2)] in children 7 years of age (Factor-Litvak et al. 2014). Other studies using the Bayles scales have estimated that higher DEHP and HMWP exposure was predictive of cognitive functioning in children 6 months to 3 years of age (Kim et al. 2011; Qian et al. 2019). In contrast to previous studies examining DNOP exposure in late pregnancy (Doherty et al. 2017; Li et al. 2019; Téllez-Rojo et al. 2013), we found an inverse association with late pregnancy mCPP metabolite concentrations and cognition. Differences in results may be due to ethnic differences and differences in cognitive measurement scales. For example, the study population of Factor-Litvak et al. (2014) consisted of Hispanic and African American women of inner-city New York with low socioeconomic status. Our study population comprised mainly Dutch participants and fewer socioeconomically deprived persons, limiting comparability of the results. Further, the Bayley Scales of Infant Development measures cognition through evaluation of sensory perception, knowledge, memory, problem solving, and early language at a young age. We used the SON-R test to measure cognition at 6 years of age, which is an age when IQ is arguably more stable than in infants or toddlers.

Regarding bisphenols, our results are in line with those of previous studies that also were unable to detect an association

Table 3. Difference in child nonverbal IQ score at 6 years of age per 10_{10} increase in creatinine-adjusted maternal urine phthalate metabolite and bisphenol concentrations (measured in micrograms per gram creatinine), by timing of urine sampling.

Phthalate metabolite ^a and bisphenol concentrations	Unadjusted		Adjusted ^b		Mutually adjusted ^c	
	B	95% CI	B	95% CI	B	95% CI
Σ LMWP metabolites						
<18 wks of gestation	-3.21	-4.64, -1.78	-1.68	-3.05, -0.32	-1.75	-3.21, -0.29
18–25 wks of gestation	-1.70	-3.30, -0.11	0.27	-1.25, 1.79	1.04	-0.58, 2.67
>25 wks of gestation	-2.85	-4.52, -1.18	-1.07	-2.65, 0.51	-0.80	-2.50, 0.90
Averaged	-4.85	-6.96, -2.75	-1.68	-3.72, 0.36	—	—
<i>p</i> -Value ^d						0.06
Σ HMWP metabolites						
<18 wks of gestation	-3.63	-5.55, -1.70	-1.80	-3.62, 0.03	-1.98	-3.82, -0.13
18–25 wks of gestation ^e	-0.87	-2.81, 1.07	1.04	-0.80, 2.87	1.19	-0.67, 3.05
>25 wks of gestation ^e	-0.14	-2.82, 2.54	0.73	-1.79, 3.26	0.79	-1.76, 3.33
Averaged	-4.41	-7.69, -1.12	-0.37	-3.52, 2.78	—	—
<i>p</i> -Value ^d						0.09
Σ DEHP metabolites						
<18 wks of gestation	-3.20	-5.09, -1.31	-1.73	-3.52, 0.05	-1.89	-3.69, -0.09
18–25 wks of gestation	-0.42	-2.33, 1.49	0.92	-0.88, 2.72	1.06	-0.76, 2.88
>25 wks of gestation	0.20	-2.38, 2.77	0.65	-1.78, 3.09	0.71	-1.75, 3.16
Averaged	-2.21	-4.64, 0.22	0.05	-2.26, 2.36	—	—
<i>p</i> -Value ^d						0.11
Σ DNOP metabolites						
<18 wks of gestation	-2.61	-4.46, -0.76	-1.98	-3.72, -0.23	-1.86	-3.65, -0.08
18–25 wks of gestation	-0.13	-2.20, 1.94	0.38	-1.57, 2.32	0.87	-1.1, 2.84
>25 wks of gestation	-1.10	-3.64, 1.43	-2.39	-4.76, -0.02	-2.10	-4.51, 0.30
Averaged	-3.28	-6.47, -0.09	-2.97	-6.00, 0.06	—	—
<i>p</i> -Value ^d						0.03
PA metabolites						
<18 wks of gestation	-2.59	-4.32, -0.87	-1.93	-3.55, -0.31	-1.90	-3.55, -0.25
18–25 wks of gestation	-0.90	-2.72, 0.91	0.85	-0.87, 2.57	1.07	-0.66, 2.80
>25 wks of gestation	-2.46	-4.75, -0.17	-1.09	-3.25, 1.07	-0.78	-2.98, 1.42
Averaged	-4.64	-7.57, -1.71	-1.77	-4.57, 1.04	—	—
<i>p</i> -Value ^d						0.05
Bisphenol metabolites						
<18 wks of gestation ^f	0.38	-1.10, 1.86	0.49	-0.90, 1.87	0.48	-0.90, 1.87
18–25 wks of gestation ^g	0.48	-1.19, 2.15	0.13	-1.44, 1.70	0.12	-1.44, 1.69
>25 wks of gestation ^h	1.05	-0.74, 2.85	0.05	-1.62, 1.72	0.06	-1.61, 1.74
Averaged	1.81	-1.03, 4.65	0.76	-1.89, 3.42	—	—
<i>p</i> -Value ^d						0.92

Note: —, not applicable; B, unstandardized beta; BMI, body mass index; CI, confidence interval; DEHP, di-2-ethylhexylphthalate; DNOP, di-*n*-octylphthalate; HMWP, high-molecular weight phthalate; IQ, intelligence quotient; LMWP, low-molecular weight phthalate; PA, phthalic acid.

^aPhthalate metabolites are grouped into the following categories: LMWP metabolites (sum of mono-methyl phthalate, mono-ethyl phthalate, mono-isobutyl phthalate, mono-*n*-butyl phthalate); HMWP metabolites (sum of mono-(2-ethyl-5-carboxypentyl) phthalate, mono-(2-ethyl-5-hydroxyhexyl) phthalate, mono-(2-ethyl-5-oxohexyl) phthalate, mono-[(2-carboxymethyl)hexyl] phthalate, mono(3-carboxypropyl) phthalate, monobenzyl phthalate, mono-hexyl phthalate, and mono-2-heptyl phthalate); DEHP metabolites: [sum of mono (2-ethyl-5 carboxypentyl) phthalate, mono (2-ethyl-5 hydroxyhexyl) phthalate, mono-(2-ethyl-5-oxohexyl) phthalate, and mono-[(2-carboxymethyl)hexyl] phthalate]; DNOP metabolites [mono(3-carboxypropyl) phthalate]; and PA (a proxy for total phthalate exposure).

^bAdjusted for maternal age, maternal nonverbal IQ, sex of child, age of the child at assessment, ethnicity, education, income, marital status, maternal alcohol consumption, BMI, parity categories, and smoking.

^cAdjusted model with the inclusion of the three exposures in one model.

^dTests whether exposure from different time points relates in the same manner to nonverbal IQ scores using the multiple informant method (Sánchez et al. 2011).

^eWith the exclusion of mono-hexyl phthalate and mono-2-heptyl phthalate metabolite concentrations.

^fTotal bisphenol: sum of bisphenol A, bisphenol F, and bisphenol S.

^gTotal bisphenol: sum of bisphenol A and bisphenol S.

^hTotal bisphenol: sum of bisphenol A and bisphenol F.

between maternal urinary BPA concentrations and cognitive functioning in children (Braun et al. 2017a, 2017b; Casas et al. 2015; Nakiwala et al. 2018; Stacy et al. 2017). BPA concentrations measured at 12 wks of gestation (Braun et al. 2017a), at 16–26 wks of gestation (Braun et al. 2017b; Stacy et al. 2017), and at 22–29 wks of gestation (Nakiwala et al. 2018) were not associated with IQ scores measured in children 1 and 8 years of age. Casas et al. (2015) used the Bayley Scales (at 1 year of age) and the McCarthy Scales of Children’s Abilities (at 4 years of age) to assess cognitive functioning but found no association for averaged first- and third-trimester BPA exposure. However, one study assessing BPA exposure using cord blood instead of maternal urine estimated an inverse association with IQ in children at 7 years of age (Lin et al. 2017).

To our knowledge, only one previous study investigated prenatal BPS and BPF exposure in relation to cognitive functioning

in children (Tanner et al. 2020). The present study examined early pregnancy exposure to a mixture of endocrine-disrupting chemicals, including BPA, BPF, and BPS, and identified BPF as the primary chemical with a substantial contribution to the overall mixture effect on lower IQ among boys (Tanner et al. 2020). Manufacturers seeking BPA alternatives have turned to other bisphenols to produce BPA-free products (Grignard et al. 2012). However, experimental studies have shown that the BPA replacements have metabolism, potencies, and mechanisms of action that may be similar to that of BPA (Eladak et al. 2015). BPF and BPS also display endocrine-disruptive properties (Moreman et al. 2017; Viñas and Watson 2013). Further, an experimental study suggested that prenatal BPS exposure is able to induce hypothalamic neurogenesis (Kinch et al. 2015). However, we did not find that prenatal exposure to BPF and BPS was associated with nonverbal IQ in children.

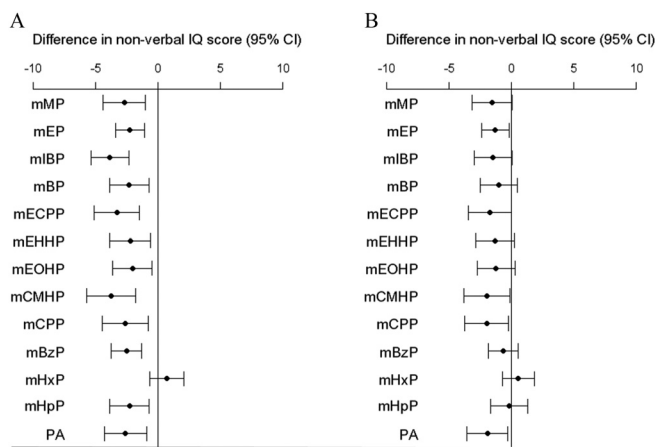


Figure 1. Difference in nonverbal IQ per log₁₀ increase in phthalate metabolite concentrations in micrograms per gram creatinine at <18 wks of gestation. Corresponding numeric data are reported in Table S7. A) Unadjusted model. B) Adjusted for maternal age, maternal nonverbal IQ, sex of child, age of the child at assessment, ethnicity, education, income, marital status, maternal alcohol consumption, BMI, parity categories, and smoking categories. Note: BMI, body mass index; mBP, mono-*n*-butyl phthalate; mBzP, monobenzyl phthalate; mCMHP, mono-[(2-carboxymethyl)hexyl]phthalate; mCPP, mono(3-carboxypropyl) phthalate; mECPP, mono-(2-ethyl-5-carboxypentyl) phthalate; mEHHP, mono-(2-ethyl-5-hydroxyhexyl) phthalate; mEOHP, mono-(2-ethyl-5-oxyhexyl) phthalate; mEP, mono-ethyl phthalate; mHpP, mono-2-heptyl phthalate; mHxP, mono-hexyl phthalate; mlBP, mono-isobutyl phthalate; mMP, mono-methyl phthalate; PA, phthalic acid.

Several studies have estimated sex differences in the association between prenatal phthalates or bisphenol exposure with neurobehavioral problems such as aggression, hyperactivity, inattention, emotional reactivity, orientation, motor performance, anxiety, and depression and reduced masculine play in boys (Braun et al. 2009, 2011; Engel et al. 2009, 2010; Kobrosly et al. 2014; Perera et al. 2012; Roen et al. 2015; Swan et al. 2010; Yolton et al. 2011). In some studies of cognitive outcomes, effect modification by sex was estimated in the association of prenatal phthalate exposure and the Bayley Scales (Doherty et al. 2017; Kim et al. 2011; Téllez-Rojo et al. 2013; Wyatt et al. 2012) and IQ (Hyland et al. 2019), but the findings are inconsistent regarding the exact phthalate metabolites, timing of exposure, and the sex-specific effect of the associations.

The phthalate and bisphenol concentrations in the present study were generally of the same magnitude as those reported by several other studies of pregnant women. For example median mEHHP (6–12 ng/mL), mEOHP (7–8 ng/mL), mBP (10–16 ng/mL), and BPA (1.1–1.5 ng/mL) concentrations in the present study were similar to those estimated in Canada (9, 6, 12, and 1 ng/mL, respectively) (Arbuckle et al. 2014) and Israel (6, 5, 10, and 2 ng/mL, respectively) (Machtinger et al. 2018). Concentrations measured in pregnant women from Korea, China, Taiwan, and the United States were, in general, somewhat higher (Factor-Litvak et al. 2014; Hyland et al. 2019; Ji Kim et al. 2017; Y Kim et al. 2011; Qian et al. 2019; Wyatt et al. 2012; Woodruff et al. 2011). The difference in exposure levels between studies may be due to different dietary habits, methods and timing of urine sampling, product usage, and metabolic rate.

We found substantial confounding (~50%) of point estimates when adjusting for confounders and little change in the estimates when accounting for the exposure of other time windows. This suggests that the total effect of early pregnancy phthalate exposure on nonverbal IQ is mostly driven by the direct effect rather than by mid and late pregnancy phthalate exposure and that the

effect of late pregnancy DNOP exposure is somewhat confounded by early and mid pregnancy exposure.

The critical windows of fetal neurodevelopment toxicity for phthalate exposure is uncertain. To the best of our knowledge, this is one of the first studies among humans that investigated early pregnancy phthalate exposure in relation to offspring IQ. Our results suggest that early pregnancy might be a critical period for potential effects of phthalate exposure on cognitive development. Although biological mechanisms that might contribute to associations are uncertain, animal studies have shown that phthalates may interfere with processes essential for the development of the fetal brain (Lyche et al. 2009; Miodovnik et al. 2014). A potential mechanism is via the disruption of the thyroid function (Lyche et al. 2009; Miodovnik et al. 2014). Thyroid hormones are important for fetal neurodevelopment from early pregnancy onward. Animal studies have shown that thyroid hormones are involved in neocorticalogenesis and the development of the hippocampus and cytoarchitecture of the somatosensory cortex (Ausoó et al. 2004; Lavado-Autric et al. 2003). In addition, data from animal studies have shown that maternal hypothyroxinemia interferes with neuronal migration, differentiation, synaptogenesis, and cortical layer formation (Morreale de Escobar et al. 2004; Pathak et al. 2011). During early gestation, the fetus depends fully on maternal thyroid hormones that cross the placenta because the fetal thyroid function does not start before 12–14 wks of pregnancy (Morreale de Escobar et al. 2004, 2007). Moreover, after the onset of fetal thyroid hormone production, the fetus remains dependent on maternal thyroid hormones (Morreale de Escobar et al. 2004). Prenatal exposure to phthalates has been associated with changes in circulating thyroid hormone and low thyroid function in pregnant women, including during early pregnancy (Gao et al. 2017; Johns et al. 2015; Kuo et al. 2015; Yao et al. 2016), which is an important determinant of offspring neurodevelopment (Morreale de Escobar 2001; Haddow et al. 1999). For example, earlier studies in the same cohort as the present study (the Generation R Study cohort) found maternal thyroid function during early pregnancy to be associated with nonverbal IQ (Korevaar et al. 2016).

Another potential mechanism might be that prenatal phthalate exposure may affect neurodevelopment through interaction with peroxisome proliferator-activated receptors, a class of nuclear receptors involved in many physiologic processes central to neurodevelopment, including cellular reproduction and differentiation (Lyche et al. 2009; Miodovnik et al. 2014). Animal studies have shown that phthalates may induce peroxisome proliferator-activated receptor overexpression, resulting in apoptosis of undifferentiated neurons (Lin et al. 2011). Further, prenatal phthalate exposures may be associated with fetal growth (Marie et al. 2015), which is a strong predictor of neurodevelopment (Miller et al. 2016). It is conceivable that fetal exposure to phthalates may affect neurodevelopment via growth restriction. However, recent reviews do not provide a clear conclusion about the effects of phthalates on pregnancy outcomes such as gestational age, birth weight, and preterm birth (Marie et al. 2015; Radke et al. 2019; Zarean et al. 2016). Several phthalates are anti-androgenic, resulting in circulating testosterone and male reproductive tract abnormalities (Foster 2005; Hannas et al. 2011; Howdeshell et al. 2008; Johnson et al. 2012; Radke et al. 2018, 2020). Gonadal hormones are important for sex-specific brain development, and they also play a crucial role in adolescent brain remodeling (Cohen-Bendahan et al. 2005; Dahl et al. 2018). Other potential mechanisms include the disruption of calcium signaling and lipid metabolism, which are essential for normal neurodevelopmental processes in fetal life (Lyche et al. 2009; Miodovnik et al. 2014).

In the present study, we estimated that a 10-fold increase in early pregnancy phthalate metabolite concentrations and late

pregnancy DNOP exposure was associated with 1.7–2.4 lower IQ points in children. Higher child IQ is associated with healthier behavior and lifetime achievements (including educational achievement, well-paid employment, enhanced social status, and the accompanying benefits to health) later in life (Batty and Deary 2004; Wraw et al. 2018). Several studies have estimated the socioeconomic impact of IQ loss. The burden and disease costs of exposure to chemicals has been estimated to be high (Trasande et al. 2015). For example, every IQ point lost from the U.S. average is estimated to have an annual cost of US\$71 billion (Muir and Zegarac 2001).

A strength of the present study is the large sample size. The sample of our study was approximately two to three times larger than the abovementioned studies that investigated prenatal phthalates or bisphenol exposure and cognitive function in children. Another strength of the present study is the availability of more phthalate and bisphenol biomarkers as compared with previous studies investigating prenatal exposure to phthalates or bisphenols and neurodevelopment. Finally, the three repeated measures for exposure estimation in three time windows across pregnancy is yet another strength. This allowed us to investigate potential windows of susceptibility.

Our study has a few limitations that need to be considered. Although we adjusted for many potential confounders, we cannot rule out residual confounding by unknown unobserved background risk factors related to the likelihood of exposure and cognitive functioning. Second, we used three spot urine samples during early, mid, and late pregnancy for measurements of chemicals. Although this is more frequent than most other studies investigating prenatal exposure to phthalates and bisphenols and cognitive functioning, misclassification of exposure due to the limited number of samples may have occurred and could have resulted in less precise exposure–response estimates (Perrier et al. 2016; Vernet et al. 2019). This is particularly relevant for the time-specific analyses in which we relied on a single biomarker to estimate exposure. Phthalates and bisphenols have a short half-life and are quickly metabolized in the human body. Therefore, the use of multiple pooled urine specimens across trimesters is suggested to avoid exposure misclassification (Casas et al. 2018; Perrier et al. 2016; Vernet et al. 2019). Another limitation of the present study is the absence of information about the exact time of spot urine sampling. Because the urine spot samples were collected between 0800 and 1000 hours, there may have been a combination of first morning and random spot samples. Concentrations of chemicals, urine volume, and the rate of excretion vary with fluid intake, time of day, and other factors (Barr et al. 2005; Boeniger et al. 1993; Cornelis et al. 1996). Although, time of sample collection is unlikely to confound the association between phthalate and bisphenol exposure and nonverbal IQ, the difference in concentrations between morning and random spot urine could have increased the intra-individual variability. We used creatinine adjustment to account for urine dilution, which is advantageous because of its ease of measurement and the low cost and widespread availability of assays (Johnson et al. 2014). However, creatinine excretion rates may vary across pregnancy (Cheung and Lafayette 2013; Davison et al. 1980; Davison and Noble 1981), and studies have suggested that specific gravity rather than creatinine adjustment may be more appropriate in populations undergoing physiological changes in renal function, such as pregnant women (Abduljalil et al. 2012; MacPherson et al. 2018). For example, specific gravity has a slightly better within-person reproducibility and the least amount of systematic variation when compared with creatinine adjustment (MacPherson et al. 2018). However, high correlations (>0.8) between creatinine and specific gravity in spot urines have been reported (Carrieri et al. 2000; Cone et al. 2009; Sauvé et al. 2015).

Finally, the Generation R Study is representative of an urban population with varying ethnicities, socioeconomic statuses, and educational levels, and therefore less generalizable to populations where the phthalate and bisphenol exposure sources may differ.

In the present study, we did not observe that maternal biomarkers of bisphenols are associated with lower nonverbal IQ. We did observe that phthalate exposure in early pregnancy and DNOP exposure in late pregnancy is associated with lower nonverbal IQ scores in children. Our results might suggest that particularly early pregnancy is a sensitive window of phthalate exposure, but future studies are needed to replicate our findings.

Acknowledgments

The Generation R Study is conducted by the Erasmus Medical Center, Rotterdam, in close collaboration with the Faculty of Social Sciences of the Erasmus University Rotterdam, the Municipal Health Service, Rotterdam Homecare Foundation and Stichting Trombosedienst & Artsenlaboratorium Rijnmond. The authors extend thanks for the contribution of the participating parents and their children, general practitioners, hospitals, midwives, and pharmacies.

The general design of the Generation R Study is supported by the Erasmus Medical Center-Rotterdam, the Erasmus University Rotterdam, the Netherlands Organization for Health Research and Development, Netherlands Organization for Scientific Research, and the Ministry of Health, Welfare and Sport, the Municipal Health Service Rotterdam area, and the Stichting Trombosedienst and Artsenlaboratorium Rijnmond. This research received financial support from National Institutes of Health (NIH) grants R01ES022972 and R01ES029779. In addition, this work was supported in part by the Intramural Research Program of the NIH/National Institute of Environmental Health Sciences (ZIAES101575). H.T. was supported by grants from Netherlands Organization for Scientific Research (NWO; grant 024.001.003, Consortium on Individual Development, and NWO/ZonMW grant 016.VICI.170.200). M.G. is funded by a Miguel Servet fellowship (MS13/00054, CPII18/00018) awarded by the Spanish Institute of Health Carlos III. The research leading to these results received funding from the European Union Horizon 2020 Research and Innovation Programme under grant 733206 (LifeCycle Project). A.G. was supported by grant UH3OD023305 from the Environmental influences on Child Health Outcomes Program (NIH). V.W.V.J. received grant ERC-2014-CoG-648916 from the European Research Council.

References

- Abduljalil K, Furness P, Johnson TN, Rostami-Hodjegan A, Soltani H. 2012. Anatomical, physiological and metabolic changes with gestational age during normal pregnancy: a database for parameters required in physiologically based pharmacokinetic modelling. *Clin Pharmacokinet* 51(6):365–396, PMID: 22515555, <https://doi.org/10.2165/11597440-000000000-00000>.
- Arbuckle TE, Davis K, Marro L, Fisher M, Legrand M, LeBlanc A, et al. 2014. Phthalate and bisphenol A exposure among pregnant women in Canada—results from the MIREC study. *Environ Int* 68:55–65, PMID: 24709781, <https://doi.org/10.1016/j.envint.2014.02.010>.
- Arcadi FA, Costa C, Imperatore C, Marchese A, Rapisarda A, Salemi M, et al. 1998. Oral toxicity of bis (2-ethylhexyl) phthalate during pregnancy and suckling in the Long-Evans rat. *Food Chem Toxicol* 36(11):963–970, PMID: 9771559, [https://doi.org/10.1016/s0278-6915\(98\)00065-9](https://doi.org/10.1016/s0278-6915(98)00065-9).
- Asimakopoulos AG, Xue J, De Carvalho BP, Iyer A, Abualnaja KO, Yaghmoor SS, et al. 2016. Urinary biomarkers of exposure to 57 xenobiotics and its association with oxidative stress in a population in Jeddah, Saudi Arabia. *Environ Res* 150:573–581, PMID: 26654562, <https://doi.org/10.1016/j.envres.2015.11.029>.
- Ausoó E, Lavado-Autric R, Cuevas E, Del Rey FE, Morreale De Escobar G, Berbel P. 2004. A moderate and transient deficiency of maternal thyroid function at the beginning of fetal neocortico-genesis alters neuronal migration. *Endocrinology* 145(9):4037–4047, PMID: 15087434, <https://doi.org/10.1210/en.2004-0274>.

- Barr DB, Wilder LC, Caudill SP, Gonzalez AJ, Needham LL, Pirkle JL. 2005. Urinary creatinine concentrations in the U.S. population: implications for urinary biologic monitoring measurements. *Environ Health Perspect* 113(2):192–200, PMID: 15687057, <https://doi.org/10.1289/ehp.7337>.
- Batty GD, Deary IJ. 2004. Early life intelligence and adult health. *BMJ* 329(7466):585–586, PMID: 15361422, <https://doi.org/10.1136/bmj.329.7466.585>.
- Bellinger DC. 2013. Prenatal exposures to environmental chemicals and children's neurodevelopment: an update. *Saf Health Work* 4(1):1–11, PMID: 23515885, <https://doi.org/10.5491/SHAW.2013.4.1.1>.
- Berbel P, Navarro D, Ausó E, Varea E, Rodríguez AE, Ballesta JJ, et al. 2010. Role of late maternal thyroid hormones in cerebral cortex development: an experimental model for human prematurity. *Cereb Cortex* 20(6):1462–1475, PMID: 19812240, <https://doi.org/10.1093/cercor/bhp212>.
- Boas M, Main KM, Feldt-Rasmussen U. 2009. Environmental chemicals and thyroid function: an update. *Curr Opin Endocrinol Diabetes Obes* 16(5):385–391, PMID: 19625957, <https://doi.org/10.1097/MED.0b013e3283305af7>.
- Boberg J, Christiansen S, Axelstad M, Kledal TS, Vinggaard AM, Dalgaard M, et al. 2011. Reproductive and behavioral effects of diisononyl phthalate (DINP) in perinatally exposed rats. *Reprod Toxicol* 31(2):200–209, PMID: 21075200, <https://doi.org/10.1016/j.reprotox.2010.11.001>.
- Boeniger MF, Lowry LK, Rosenberg J. 1993. Interpretation of urine results used to assess chemical exposure with emphasis on creatinine adjustments: a review. *Am Ind Hyg Assoc J* 54(10):615–627, PMID: 8237794, <https://doi.org/10.1080/15298669391355134>.
- Bonefeld-Jørgensen EC, Long M, Hofmeister MV, Vinggaard AM. 2007. Endocrine-disrupting potential of bisphenol A, bisphenol A dimethacrylate, 4-*n*-nonylphenol, and 4-*n*-octylphenol *in vitro*: new data and a brief review. *Environ Health Perspect* 115(suppl 1):69–76, PMID: 18174953, <https://doi.org/10.1289/ehp.9368>.
- Borch J, Metzdrorf SB, Vinggaard AM, Brokken L, Dalgaard M. 2006. Mechanisms underlying the anti-androgenic effects of diethylhexyl phthalate in fetal rat testis. *Toxicology* 223(1–2):144–155, PMID: 16690193, <https://doi.org/10.1016/j.tox.2006.03.015>.
- Braun JM, Kalkbrenner AE, Calafat AM, Yolton K, Ye X, Dietrich KN, et al. 2011. Impact of early-life bisphenol A exposure on behavior and executive function in children. *Pediatrics* 128(5):873–882, PMID: 22025598, <https://doi.org/10.1542/peds.2011-1335>.
- Braun JM, Muckle G, Arbuckle T, Bouchard MF, Fraser WD, Ouellet E, et al. 2017a. Associations of prenatal urinary bisphenol A concentrations with child behaviors and cognitive abilities. *Environ Health Perspect* 125(6):067008, PMID: 28657891, <https://doi.org/10.1289/EHP984>.
- Braun JM, Yolton K, Dietrich KN, Hornung R, Ye X, Calafat AM, et al. 2009. Prenatal bisphenol A exposure and early childhood behavior. *Environ Health Perspect* 117(12):1945–1952, PMID: 20049216, <https://doi.org/10.1289/ehp.0900979>.
- Braun JM, Yolton K, Stacy SL, Erar B, Papandonatos GD, Bellinger DC, et al. 2017b. Prenatal environmental chemical exposures and longitudinal patterns of child neurobehavior. *Neurotoxicology* 62:192–199, PMID: 28736150, <https://doi.org/10.1016/j.neuro.2017.07.027>.
- Buckley JP, Doherty BT, Keil AP, Engel SM. 2017. Statistical approaches for estimating sex-specific effects in endocrine disruptors research. *Environ Health Perspect* 125(6):067013, PMID: 28665274, <https://doi.org/10.1289/EHP334>.
- Carrieri M, Trevisan A, Bartolucci GB. 2000. Adjustment to concentration-dilution of spot urine samples: correlation between specific gravity and creatinine. *Int Arch Occup Environ Health* 74(1):63–67, PMID: 11196084, <https://doi.org/10.1007/s004200000190>.
- Casas M, Basagaña X, Sakhi AK, Haug LS, Philippat C, Granum B, et al. 2018. Variability of urinary concentrations of non-persistent chemicals in pregnant women and school-aged children. *Environ Int* 121(pt 1):561–573, PMID: 30300814, <https://doi.org/10.1016/j.envint.2018.09.046>.
- Casas M, Chevrier C, Hond ED, Fernandez MF, Pierik F, Philippat C, et al. 2013. Exposure to brominated flame retardants, perfluorinated compounds, phthalates and phenols in European birth cohorts: ENRIECO evaluation, first human biomonitoring results, and recommendations. *Int J Hyg Environ Health* 216(3):230–242, PMID: 22795704, <https://doi.org/10.1016/j.ijheh.2012.05.009>.
- Casas M, Forns J, Martínez D, Avella-García C, Valvi D, Ballesteros-Gómez A, et al. 2015. Exposure to bisphenol A during pregnancy and child neuropsychological development in the INMA-Sabadell cohort. *Environ Res* 142:671–679, PMID: 26343751, <https://doi.org/10.1016/j.envres.2015.07.024>.
- Cefic Chemdata International. 2010. *Facts and Figures. The European Chemical Industry in a Worldwide Perspective. International Comparison of Production Growth*. Brussels, Belgium: European Chemical Industry Council, Cefic Chemdata International.
- Cheung KL, Lafayette RA. 2013. Renal physiology of pregnancy. *Adv Chronic Kidney Dis* 20(3):209–214, PMID: 23928384, <https://doi.org/10.1053/j.ackd.2013.01.012>.
- Chiesi F, Ciancaleoni M, Galli S, Primi C. 2012. Using the Advanced Progressive Matrices (Set I) to assess fluid ability in a short time frame: an item response theory-based analysis. *Psychol Assess* 24(4):892–900, PMID: 22449036, <https://doi.org/10.1037/a0027830>.
- Chou W-C, Chen J-L, Lin C-F, Chen Y-C, Shih F-C, Chuang C-Y. 2011. Biomonitoring of bisphenol A concentrations in maternal and umbilical cord blood in regard to birth outcomes and adipokine expression: a birth cohort study in Taiwan. *Environ Health* 10:94, PMID: 22050967, <https://doi.org/10.1186/1476-069X-10-94>.
- Cohen-Bendahan CCC, van de Beek C, Berenbaum SA. 2005. Prenatal sex hormone effects on child and adult sex-typed behavior: methods and findings. *Neurosci Biobehav Rev* 29(2):353–384, PMID: 15811504, <https://doi.org/10.1016/j.neubiorev.2004.11.004>.
- Cole SR, Hernán MA. 2008. Constructing inverse probability weights for marginal structural models. *Am J Epidemiol* 168(6):656–664, PMID: 18682488, <https://doi.org/10.1093/aje/kwn164>.
- Cone EJ, Caplan YH, Moser F, Robert T, Shelby MK, Black DL. 2009. Normalization of urinary drug concentrations with specific gravity and creatinine. *J Anal Toxicol* 33(1):1–7, PMID: 19161663, <https://doi.org/10.1093/jat/33.1.1>.
- Cornelis R, Heinzow B, Herber RF, Christensen JM, Poulsen OM, Sabbioni E, et al. 1996. Sample collection guidelines for trace elements in blood and urine. IUPAC Commission of Toxicology. *J Trace Elem Med Biol* 10(2):103–127, PMID: 8829133, [https://doi.org/10.1016/s0946-672x\(96\)80018-6](https://doi.org/10.1016/s0946-672x(96)80018-6).
- Dahl RE, Allen NB, Wilbrecht L, Suleiman AB. 2018. Importance of investing in adolescence from a developmental science perspective. *Nature* 554(7693):441–450, PMID: 29469094, <https://doi.org/10.1038/nature25770>.
- Davison JM, Dunlop W, Ezimokhai M. 1980. 24-hour creatinine clearance during the third trimester of normal pregnancy. *Br J Obstet Gynaecol* 87(2):106–109, PMID: 7362796, <https://doi.org/10.1111/j.1471-0528.1980.tb04501.x>.
- Davison JM, Noble MCB. 1981. Serial changes in 24 hour creatinine clearance during normal menstrual cycles and the first trimester of pregnancy. *Br J Obstet Gynaecol* 88(1):10–17, PMID: 7459286, <https://doi.org/10.1111/j.1471-0528.1981.tb00930.x>.
- Doherty BT, Engel SM, Buckley JP, Silva MJ, Calafat AM, Wolff MS. 2017. Prenatal phthalate biomarker concentrations and performance on the Bayley Scales of Infant Development-II in a population of young urban children. *Environ Res* 152:51–58, PMID: 27741448, <https://doi.org/10.1016/j.envres.2016.09.021>.
- Eladak S, Grisin T, Moison D, Guerquin M-J, N'Tumba-Byn T, Pozzi-Gaudin S, et al. 2015. A new chapter in the bisphenol A story: bisphenol S and bisphenol F are not safe alternatives to this compound. *Fertil Steril* 103(1):11–21, PMID: 25475787, <https://doi.org/10.1016/j.fertnstert.2014.11.005>.
- Engel SM, Miodovnik A, Canfield RL, Zhu C, Silva MJ, Calafat AM, et al. 2010. Prenatal phthalate exposure is associated with childhood behavior and executive functioning. *Environ Health Perspect* 118(4):565–571, PMID: 20106747, <https://doi.org/10.1289/ehp.0901470>.
- Engel SM, Zhu C, Berkowitz GS, Calafat AM, Silva MJ, Miodovnik A, et al. 2009. Prenatal phthalate exposure and performance on the neonatal behavioral assessment scale in a multiethnic birth cohort. *Neurotoxicology* 30(4):522–528, PMID: 19375452, <https://doi.org/10.1016/j.neuro.2009.04.001>.
- Factor-Litvak P, Insel B, Calafat AM, Liu X, Perera F, Rauh VA, et al. 2014. Persistent associations between maternal prenatal exposure to phthalates on child IQ at age 7 years. *PLoS One* 9(12):e114003, PMID: 25493564, <https://doi.org/10.1371/journal.pone.0114003>.
- Fang Z, Zhu Q, Gu T, Shen X, Yang Y, Liang Y, et al. 2017. Anti-androgenic effects of bisphenol-A on spatial memory and synaptic plasticity of the hippocampus in mice. *Horm Behav* 93:151–158, PMID: 28576649, <https://doi.org/10.1016/j.yhbeh.2017.05.014>.
- Foster PMD. 2005. Mode of action: impaired fetal Leydig cell function—effects on male reproductive development produced by certain phthalate esters. *Crit Rev Toxicol* 35(8–9):713–719, PMID: 16417038, <https://doi.org/10.1080/10408440591007395>.
- Gao H, Wu W, Xu Y, Jin Z, Bao H, Zhu P, et al. 2017. Effects of prenatal phthalate exposure on thyroid hormone concentrations beginning at the embryonic stage. *Sci Rep* 7(1):13106, PMID: 29026179, <https://doi.org/10.1038/s41598-017-13672-x>.
- Ghassabian A, Bongers-Schokking JJ, Henrichs J, Jaddoe VVW, Visser TJ, Visser W, et al. 2011. Maternal thyroid function during pregnancy and behavioral problems in the offspring: the Generation R Study. *Pediatr Res* 69(5 pt 1):454–459, PMID: 21471776, <https://doi.org/10.1203/PDR.0b013e3182125b0c>.
- Ghisari M, Bonefeld-Jørgensen EC. 2009. Effects of plasticizers and their mixtures on estrogen receptor and thyroid hormone functions. *Toxicol Lett* 189(1):67–77, PMID: 19463926, <https://doi.org/10.1016/j.toxlet.2009.05.004>.
- Grignard E, Lapenna S, Bremer S. 2012. Weak estrogenic transcriptional activities of bisphenol A and bisphenol S. *Toxicol In Vitro* 26(5):727–731, PMID: 22507746, <https://doi.org/10.1016/j.tiv.2012.03.013>.
- Haddow JE, Palomaki GE, Allan WC, Williams JR, Knight GJ, Gagnon J, et al. 1999. Maternal thyroid deficiency during pregnancy and subsequent neuropsychological development of the child. *N Engl J Med* 341(8):549–555, PMID: 10451459, <https://doi.org/10.1056/NEJM199908193410801>.

- Hannas BR, Lambricht CS, Furr J, Howdeshell KL, Wilson VS, Gray LE Jr. 2011. Dose–response assessment of fetal testosterone production and gene expression levels in rat testes following *in utero* exposure to diethylhexyl phthalate, diisobutyl phthalate, diisooheptyl phthalate, and diisononyl phthalate. *Toxicol Sci* 123(1):206–216, PMID: 21633115, <https://doi.org/10.1093/toxsci/kfr146>.
- Hofman A, Jaddoe VVW, Mackenbach JP, Moll HA, Snijders RFM, Steegers EAP, et al. 2004. Growth, development and health from early fetal life until young adulthood: the Generation R Study. *Paediatr Perinat Epidemiol* 18(1):61–72, PMID: 14738548, <https://doi.org/10.1111/j.1365-3016.2003.00521.x>.
- Hornung RW, Reed LD. 1990. Estimation of average concentration in the presence of nondetectable values. *Appl Occup Environ Hyg* 5(1):46–51, <https://doi.org/10.1080/1047322X.1990.10389587>.
- Howdeshell KL, Wilson VS, Furr J, Lambricht CR, Rider CV, Blystone CR, et al. 2008. A mixture of five phthalate esters inhibits fetal testicular testosterone production in the Sprague-Dawley rat in a cumulative, dose-additive manner. *Toxicol Sci* 105(1):153–165, PMID: 18411233, <https://doi.org/10.1093/toxsci/kfn077>.
- Huang B, Ning S, Zhang Q, Chen A, Jiang C, Cui Y, et al. 2017. Bisphenol A represses dopaminergic neuron differentiation from human embryonic stem cells through downregulating the expression of insulin-like growth factor 1. *Mol Neurobiol* 54(5):3798–3812, PMID: 27271280, <https://doi.org/10.1007/s12035-016-9898-y>.
- Huang H-B, Chen H-Y, Su P-H, Huang P-C, Sun C-W, Wang C-J, et al. 2015. Fetal and childhood exposure to phthalate diesters and cognitive function in children up to 12 years of age: Taiwanese Maternal and Infant Cohort Study. *PLoS One* 10(6):e0131910, PMID: 26121592, <https://doi.org/10.1371/journal.pone.0131910>.
- Hyland C, Mora AM, Kogut K, Calafat AM, Harley K, Dearthoff J, et al. 2019. Prenatal exposure to phthalates and neurodevelopment in the CHAMACOS cohort. *Environ Health Perspect* 127(10):107010, PMID: 31652105, <https://doi.org/10.1289/EHP5165>.
- Inadera H. 2015. Neurological effects of bisphenol A and its analogues. *Int J Med Sci* 12(12):926–936, PMID: 26664253, <https://doi.org/10.7150/ijms.13267>.
- Jaddoe VVW, Mackenbach JP, Moll HA, Steegers EAP, Tiemeier H, Verhulst FC, et al. 2006. The Generation R Study: design and cohort profile. *Eur J Epidemiol* 21(6):475–484, PMID: 16826450, <https://doi.org/10.1007/s10654-006-9022-0>.
- Jaddoe VVW, van Duijn CM, Franco OH, van der Heijden AJ, van IJzendoorn MH, de Jongste JC, et al. 2012. The Generation R Study: design and cohort update 2012. *Eur J Epidemiol* 27(9):739–756, PMID: 23086283, <https://doi.org/10.1007/s10654-012-9735-1>.
- Jaddoe VVW, van Duijn CM, van der Heijden AJ, Mackenbach JP, Moll HA, Steegers EAP, et al. 2008. The Generation R Study: design and cohort update until the age of 4 years. *Eur J Epidemiol* 23(12):801–811, PMID: 19101808, <https://doi.org/10.1007/s10654-008-9309-4>.
- Jaddoe VVW, van Duijn CM, van der Heijden AJ, Mackenbach JP, Moll HA, Steegers EAP, et al. 2010. The Generation R Study: design and cohort update 2010. *Eur J Epidemiol* 25(11):823–841, PMID: 20967563, <https://doi.org/10.1007/s10654-010-9516-7>.
- Jenkinson J, Roberts S, Dennehy S, Tellegen P. 1996. Validation of the Snijders-Oomen Nonverbal Intelligence Test–Revised 2½-7 for Australian children with disabilities. *J Psychoeduc Assess* 14(3):276–286, <https://doi.org/10.1177/073428299601400307>.
- Jensen MS, Nørgaard-Pedersen B, Toft G, Hougaard DM, Bonde JP, Cohen A, et al. 2012. Phthalates and perfluorooctanesulfonic acid in human amniotic fluid: temporal trends and timing of amniocentesis in pregnancy. *Environ Health Perspect* 120(6):897–903, PMID: 22398305, <https://doi.org/10.1289/ehp.1104522>.
- Johns LE, Ferguson KK, Soldin OP, Cantonwine DE, Rivera-González LO, Del Toro LVA, et al. 2015. Urinary phthalate metabolites in relation to maternal serum thyroid and sex hormone levels during pregnancy: a longitudinal analysis. *Reprod Biol Endocrinol* 13:4, PMID: 25596636, <https://doi.org/10.1186/1477-7827-13-4>.
- Johnson KJ, Heger NE, Boekelheide K. 2012. Of mice and men (and rats): phthalate-induced fetal testis endocrine disruption is species-dependent. *Toxicol Sci* 129(2):235–248, PMID: 22700540, <https://doi.org/10.1093/toxsci/kfs206>.
- Johnson RJ, Feehally J, Floege J. 2014. *Comprehensive Clinical Nephrology E-Book*. 5th ed. Philadelphia, PA: Elsevier Health Sciences.
- Kim JI, Hong Y-C, Shin CH, Lee YA, Lim Y-H, Kim B-N. 2017. The effects of maternal and children phthalate exposure on the neurocognitive function of 6-year-old children. *Environ Res* 156:519–525, PMID: 28431379, <https://doi.org/10.1016/j.envres.2017.04.003>.
- Kim Y, Ha E-H, Kim E-J, Park H, Ha M, Kim J-H, et al. 2011. Prenatal exposure to phthalates and infant development at 6 months: prospective Mothers and Children’s Environmental Health (MOCEH) Study. *Environ Health Perspect* 119(10):1495–1500, PMID: 21737372, <https://doi.org/10.1289/ehp.1003178>.
- Kimura E, Matsuyoshi C, Miyazaki W, Benner S, Hosokawa M, Yokoyama K, et al. 2016. Prenatal exposure to bisphenol A impacts neuronal morphology in the hippocampal CA1 region in developing and aged mice. *Arch Toxicol* 90(3):691–700, PMID: 25804199, <https://doi.org/10.1007/s00204-015-1485-x>.
- Kinch CD, Ibhazehiebo K, Jeong J-H, Habibi HR, Kurrasch DM. 2015. Low-dose exposure to bisphenol A and replacement bisphenol S induces precocious hypothalamic neurogenesis in embryonic zebrafish. *Proc Natl Acad Sci USA* 112(5):1475–1480, PMID: 25583509, <https://doi.org/10.1073/pnas.1417731112>.
- Kobrosly RW, Evans S, Miodovnik A, Barrett ES, Thurston SW, Calafat AM, et al. 2014. Prenatal phthalate exposures and neurobehavioral development scores in boys and girls at 6–10 years of age. *Environ Health Perspect* 122(5):521–528, PMID: 24577876, <https://doi.org/10.1289/ehp.1307063>.
- Koo TK, Li MY. 2016. A guideline of selecting and reporting intraclass correlation coefficients for reliability research. *J Chiropr Med* 15(2):155–163, PMID: 27330520, <https://doi.org/10.1016/j.jcm.2016.02.012>.
- Kooijman MN, Kruithof CJ, van Duijn CM, Duijts L, Franco OH, van IJzendoorn MH, et al. 2016. The Generation R Study: design and cohort update 2017. *Eur J Epidemiol* 31(12):1243–1264, PMID: 28070760, <https://doi.org/10.1007/s10654-016-0224-9>.
- Korevaar TIM, Muetzel R, Medici M, Chaker L, Jaddoe VVW, de Rijke YB, et al. 2016. Association of maternal thyroid function during early pregnancy with offspring IQ and brain morphology in childhood: a population-based prospective cohort study. *Lancet Diabetes Endocrinol* 4(1):35–43, PMID: 26497402, [https://doi.org/10.1016/S2213-8587\(15\)00327-7](https://doi.org/10.1016/S2213-8587(15)00327-7).
- Kruithof CJ, Kooijman MN, van Duijn CM, Franco OH, de Jongste JC, Klaver CCW, et al. 2014. The Generation R Study: biobank update 2015. *Eur J Epidemiol* 29(12):911–927, PMID: 25527369, <https://doi.org/10.1007/s10654-014-9980-6>.
- Kuo F-C, Su S-W, Wu C-F, Huang M-C, Shiea J, Chen B-H, et al. 2015. Relationship of urinary phthalate metabolites with serum thyroid hormones in pregnant women and their newborns: a prospective birth cohort in Taiwan. *PLoS One* 10(6):e0123884, PMID: 26042594, <https://doi.org/10.1371/journal.pone.0123884>.
- Lavado-Autric R, Ausó E, García-Velasco JV, del Carmen Arufe M, Escobar del Rey F, Berbel P, et al. 2003. Early maternal hypothyroxinemia alters histogenesis and cerebral cortex cytoarchitecture of the progeny. *J Clin Invest* 111(7):1073–1082, PMID: 12671057, <https://doi.org/10.1172/JCI16262>.
- Lehmler H-J, Liu B, Gadogbe M, Bao W. 2018. Exposure to bisphenol A, bisphenol F, and bisphenol S in U.S. adults and children: the National Health and Nutrition Examination Survey 2013–2014. *ACS Omega* 3(6):6523–6532, PMID: 29978145, <https://doi.org/10.1021/acsomega.8b00824>.
- Li M-X, Yeung JMY, Cherny SS, Sham PC. 2012. Evaluating the effective numbers of independent tests and significant *p*-value thresholds in commercial genotyping arrays and public imputation reference datasets. *Hum Genet* 131(5):747–756, PMID: 22143225, <https://doi.org/10.1007/s00439-011-1118-2>.
- Li N, Papandonatos GD, Calafat AM, Yoltou K, Lanphear BP, Chen A, et al. 2019. Identifying periods of susceptibility to the impact of phthalates on children’s cognitive abilities. *Environ Res* 172:604–614, PMID: 30878731, <https://doi.org/10.1016/j.envres.2019.03.009>.
- Li X-J, Jiang L, Chen L, Chen H-S, Li X. 2013. Neurotoxicity of dibutyl phthalate in brain development following perinatal exposure: a study in rats. *Environ Toxicol Pharmacol* 36(2):392–402, PMID: 23736097, <https://doi.org/10.1016/j.etap.2013.05.001>.
- Li Y, Zhuang M, Li T, Shi N. 2009. Neurobehavioral toxicity study of dibutyl phthalate on rats following *in utero* and lactational exposure. *J Appl Toxicol* 29(7):603–611, PMID: 19533667, <https://doi.org/10.1002/jat.1447>.
- Lin C-C, Chien C-J, Tsai M-S, Hsieh C-J, Hsieh W-S, Chen P-C. 2017. Prenatal phenolic compounds exposure and neurobehavioral development at 2 and 7 years of age. *Sci Total Environ* 605–606:801–810, PMID: 28683424, <https://doi.org/10.1016/j.scitotenv.2017.06.160>.
- Lin C-H, Chen T-J, Chen S-S, Hsiao P-C, Yang R-C. 2011. Activation of Trim17 by PPAR γ is involved in di(2-ethylhexyl) phthalate (DEHP)-induced apoptosis on Neuro-2a cells. *Toxicol Lett* 206(3):245–251, PMID: 21856391, <https://doi.org/10.1016/j.toxlet.2011.08.002>.
- Lyche JL, Gutleb AC, Bergman Å, Eriksen GS, Murk AJ, Ropstad E, et al. 2009. Reproductive and developmental toxicity of phthalates. *J Toxicol Environ Health B Crit Rev* 12(4):225–249, PMID: 20183522, <https://doi.org/10.1080/10937400903094091>.
- Machtiger R, Berman T, Adir M, Mansur A, Baccarelli AA, Racowsky C, et al. 2018. Urinary concentrations of phthalate metabolites, bisphenols and personal care product chemical biomarkers in pregnant women in Israel. *Environ Int* 116:319–325, PMID: 29754027, <https://doi.org/10.1016/j.envint.2018.04.022>.
- MacPherson S, Arbuckle TE, Fisher M. 2018. Adjusting urinary chemical biomarkers for hydration status during pregnancy. *J Expo Sci Environ Epidemiol* 28(5):481–493, PMID: 29880833, <https://doi.org/10.1038/s41370-018-0043-z>.
- Marie C, Vendittelli F, Sauvart-Rochat M-P. 2015. Obstetrical outcomes and biomarkers to assess exposure to phthalates: a review. *Environ Int* 83:116–136, PMID: 26118330, <https://doi.org/10.1016/j.envint.2015.06.003>.
- McKinze RK, Prieler J, Raven J. 2003. Detection of children’s malingering on Raven’s Standard Progressive Matrices. *Br J Clin Psychol* 42(Pt 1):95–99, PMID: 12675982, <https://doi.org/10.1348/014466503762842048>.
- Michalowicz J. 2014. Bisphenol A–sources, toxicity and biotransformation. *Environ Toxicol Pharmacol* 37(2):738–758, PMID: 24632011, <https://doi.org/10.1016/j.etap.2014.02.003>.

- Miller SL, Huppi PS, Mallard C. 2016. The consequences of fetal growth restriction on brain structure and neurodevelopmental outcome. *J Physiol* 594(4):807–823, PMID: 26607046, <https://doi.org/10.1113/JP271402>.
- Miodovnik A, Edwards A, Bellinger DC, Hauser R. 2014. Developmental neurotoxicity of *ortho*-phthalate diesters: review of human and experimental evidence. *Neurotoxicology* 41:112–122, PMID: 24486776, <https://doi.org/10.1016/j.neuro.2014.01.007>.
- Moore C, O'Keefe SL, Lawhon D, Tellegen P. 1998. Concurrent validity of the Snijders-Oomen Nonverbal Intelligence Test 2½–7–Revised with the Wechsler Preschool and Primary Scale of Intelligence–Revised. *Psychol Rep* 82(2):619–625, <https://doi.org/10.2466/pr0.1998.82.2.619>.
- Moreman J, Lee O, Trznadel M, David A, Kudoh T, Tyler CR. 2017. Acute toxicity, teratogenic, and estrogenic effects of bisphenol A and its alternative replacements bisphenol S, bisphenol F, and bisphenol AF in zebrafish embryo-larvae. *Environ Sci Technol* 51(21):12796–12805, PMID: 29016128, <https://doi.org/10.1021/acs.est.7b03283>.
- Morreale de Escobar G. 2001. The role of thyroid hormone in fetal neurodevelopment. *J Pediatr Endocrinol Metabol* 14(suppl 6):1453–1462, PMID: 11837499.
- Morreale de Escobar G, Obregón MJ, del Rey FE. 2004. Maternal thyroid hormones early in pregnancy and fetal brain development. *Best Pract Res Clin Endocrinol Metab* 18(2):225–248, PMID: 15157838, <https://doi.org/10.1016/j.beem.2004.03.012>.
- Morreale de Escobar G, Obregón MJ, del Rey FE. 2007. Iodine deficiency and brain development in the first half of pregnancy. *Public Health Nutr* 10(12A):1554–1570, PMID: 18053280, <https://doi.org/10.1017/S1368980007360928>.
- Muir T, Zegarac M. 2001. Societal costs of exposure to toxic substances: economic and health costs of four case studies that are candidates for environmental causation. *Environ Health Perspect* 109(suppl 6):885–903, PMID: 11744507, <https://doi.org/10.1289/ehp.01109s6885>.
- Nakiwala D, Peyre H, Heude B, Bernard JY, Béranger R, Slama R, et al. 2018. In-utero exposure to phenols and phthalates and the intelligence quotient of boys at 5 years. *Environ Health* 17(1):17, PMID: 29458359, <https://doi.org/10.1186/s12940-018-0359-0>.
- Pathak A, Sinha RA, Mohan V, Mitra K, Godbole MM. 2011. Maternal thyroid hormone before the onset of fetal thyroid function regulates reelin and downstream signaling cascade affecting neocortical neuronal migration. *Cereb Cortex* 21(1):11–21, PMID: 20368265, <https://doi.org/10.1093/cercor/bhq052>.
- Perera F, Vishnevetsky J, Herbstman JB, Calafat AM, Xiong W, Rauh V, et al. 2012. Prenatal bisphenol A exposure and child behavior in an inner-city cohort. *Environ Health Perspect* 120(8):1190–1194, PMID: 22543054, <https://doi.org/10.1289/ehp.1104492>.
- Perrier F, Giorgis-Allemand L, Slama R, Philippat C. 2016. Within-subject pooling of biological samples to reduce exposure misclassification in biomarker-based studies. *Epidemiology* 27(3):378–388, PMID: 27035688, <https://doi.org/10.1097/EDE.0000000000000460>.
- Philips EM, Jaddoe VVW, Asimakopoulos AG, Kannan K, Steegers EAP, Santos S, et al. 2018. Bisphenol and phthalate concentrations and its determinants among pregnant women in a population-based cohort in the Netherlands, 2004–5. *Environ Res* 161:562–572, PMID: 29245124, <https://doi.org/10.1016/j.envres.2017.11.051>.
- Poimenova A, Markaki E, Rahiotis C, Kitraki E. 2010. Corticosterone-regulated actions in the rat brain are affected by perinatal exposure to low dose of bisphenol A. *Neuroscience* 167(3):741–749, PMID: 20219646, <https://doi.org/10.1016/j.neuroscience.2010.02.051>.
- Polanska K, Ligocka D, Sobala W, Hanke W. 2014. Phthalate exposure and child development: the Polish Mother and Child Cohort Study. *Early Hum Dev* 90(9):477–485, PMID: 25038557, <https://doi.org/10.1016/j.earlhumdev.2014.06.006>.
- Qian X, Li J, Xu S, Wan Y, Li Y, Jiang Y, et al. 2019. Prenatal exposure to phthalates and neurocognitive development in children at two years of age. *Environ Int* 131:105023, PMID: 31351385, <https://doi.org/10.1016/j.envint.2019.105023>.
- Radke EG, Braun JM, Meeker JD, Cooper GS. 2018. Phthalate exposure and male reproductive outcomes: a systematic review of the human epidemiological evidence. *Environ Int* 121(Pt 1):764–793, PMID: 30336412, <https://doi.org/10.1016/j.envint.2018.07.029>.
- Radke EG, Braun JM, Nachman RM, Cooper GS. 2020. Phthalate exposure and neurodevelopment: a systematic review and meta-analysis of human epidemiological evidence. *Environ Int* 137:105408, PMID: 32045779, <https://doi.org/10.1016/j.envint.2019.105408>.
- Radke EG, Glenn BS, Braun JM, Cooper GS. 2019. Phthalate exposure and female reproductive and developmental outcomes: a systematic review of the human epidemiological evidence. *Environ Int* 130:104580, PMID: 31351310, <https://doi.org/10.1016/j.envint.2019.02.003>.
- Roen EL, Wang Y, Calafat AM, Wang S, Margolis A, Herbstman J, et al. 2015. Bisphenol A exposure and behavioral problems among inner city children at 7–9 years of age. *Environ Res* 142:739–745, PMID: 25724466, <https://doi.org/10.1016/j.envres.2015.01.014>.
- Sánchez BN, Hu H, Litman HJ, Téllez-Rojo MM. 2011. Statistical methods to study timing of vulnerability with sparsely sampled data on environmental toxicants. *Environ Health Perspect* 119(3):409–415, PMID: 21362588, <https://doi.org/10.1289/ehp.1002453>.
- Sathyanarayana S. 2008. Phthalates and children's health. *Curr Probl Pediatr Adolesc Health Care* 38(2):34–49, PMID: 18237855, <https://doi.org/10.1016/j.cppeds.2007.11.001>.
- Sauvé J-F, Lévesque M, Huard M, Drolet D, Lavoué J, Tardif R, et al. 2015. Creatinine and specific gravity normalization in biological monitoring of occupational exposures. *J Occup Environ Hyg* 12(2):123–129, PMID: 25192246, <https://doi.org/10.1080/15459624.2014.955179>.
- Schierow L-J, Lee MM. 2008. *Phthalates in Plastics and Possible Human Health Effects*. Washington, DC: Congressional Research Service, Library of Congress.
- Schönfelder G, Wittfoht W, Hopp H, Talsness CE, Paul M, Chahoud I. 2002. Parent bisphenol A accumulation in the human maternal-fetal-placental unit. *Environ Health Perspect* 110(11):A703–A707, PMID: 12417499, <https://doi.org/10.1289/ehp.110-1241091>.
- Selevan SG, Kimmel CA, Mendola P. 2000. Identifying critical windows of exposure for children's health. *Environ Health Perspect* 108(suppl 3):451–455, PMID: 10852844, <https://doi.org/10.1289/ehp.00108s3451>.
- Silva MJ, Reidy JA, Herbert AR, Preau JL, Needham LL, Calafat AM. 2004. Detection of phthalate metabolites in human amniotic fluid. *Bull Environ Contam Toxicol* 72(6):1226–1231, PMID: 15362453, <https://doi.org/10.1007/s00128-004-0374-4>.
- Stacy SL, Papandonatos GD, Calafat AM, Chen A, Yolton K, Lanphear BP, et al. 2017. Early life bisphenol A exposure and neurobehavior at 8 years of age: identifying windows of heightened vulnerability. *Environ Int* 107:258–265, PMID: 28764921, <https://doi.org/10.1016/j.envint.2017.07.021>.
- Steenweg-de Graaff J, Roza SJ, Steegers EAP, Hofman A, Verhulst FC, Jaddoe VVW, et al. 2012. Maternal folate status in early pregnancy and child emotional and behavioral problems: the Generation R Study. *Am J Clin Nutr* 95(6):1413–1421, PMID: 22572645, <https://doi.org/10.3945/ajcn.111.030791>.
- Sun W, Ban J-B, Zhang N, Zu Y-K, Sun W-X. 2014. Perinatal exposure to di-(2-ethylhexyl)-phthalate leads to cognitive dysfunction and phospho-tau level increase in aged rats. *Environ Toxicol* 29(5):596–603, PMID: 22610992, <https://doi.org/10.1002/tox.21785>.
- Swan SH, Liu F, Hines M, Kruse RL, Wang C, Redmon JB, et al. 2010. Prenatal phthalate exposure and reduced masculine play in boys. *Int J Androl* 33(2):259–269, PMID: 19919614, <https://doi.org/10.1111/j.1365-2605.2009.01019.x>.
- Tanida T, Warita K, Ishihara K, Fukui S, Mitsuhashi T, Sugawara T, et al. 2009. Fetal and neonatal exposure to three typical environmental chemicals with different mechanisms of action: mixed exposure to phenol, phthalate, and dioxin cancels the effects of sole exposure on mouse midbrain dopaminergic nuclei. *Toxicol Lett* 189(1):40–47, PMID: 19481886, <https://doi.org/10.1016/j.toxlet.2009.04.005>.
- Tanner EM, Hallerback MU, Wikström S, Lindh C, Kiviranta H, Hennings C, et al. 2020. Early prenatal exposure to suspected endocrine disruptor mixtures is associated with lower IQ at age seven. *Environ Int* 134:105185, PMID: 31668669, <https://doi.org/10.1016/j.envint.2019.105185>.
- Tellegen PJ, Winkel M, Wijnberg-Williams BJ, Laros JA. 1998. *Snijders-Oomen Nonverbal Intelligence Test. SON-R 2½-7 Manual and Research Report*. Lisse, Netherlands: Swets & Zeitlinger BV.
- Tellegen PJ, Winkel M, Wijnberg-Williams B, Laros JA. 2005. *SON-R 2,5-7: Snijders-Oomen niet-verbale intelligentietest. Verantwoording en handleiding*. [In Dutch.] Amsterdam, Netherlands: Hogrefe Uitgevers.
- Téllez-Rojo MM, Cantoral A, Cantonwine DE, Schnaas L, Peterson K, Hu H, et al. 2013. Prenatal urinary phthalate metabolites levels and neurodevelopment in children at two and three years of age. *Sci Total Environ* 461–462:386–390, PMID: 23747553, <https://doi.org/10.1016/j.scitotenv.2013.05.021>.
- Textor J, van der Zander B, Gilthorpe MS, Liśkiewicz M, Ellison GTH. 2016. Robust causal inference using directed acyclic graphs: the R package 'dagitty'. *Int J Epidemiol* 45(6):1887–1894, PMID: 28089956, <https://doi.org/10.1093/ije/dyw341>.
- Tian YH, Baek JH, Lee SY, Jang CG. 2010. Prenatal and postnatal exposure to bisphenol A induces anxiolytic behaviors and cognitive deficits in mice. *Synapse* 64(6):432–439, PMID: 20169576, <https://doi.org/10.1002/syn.20746>.
- Trasande L, Zoeller RT, Hass U, Kortenkamp A, Grandjean P, Myers JP, et al. 2015. Estimating burden and disease costs of exposure to endocrine-disrupting chemicals in the European Union. *J Clin Endocrinol Metab* 100(4):1245–1255, PMID: 25742516, <https://doi.org/10.1210/jc.2014-4324>.
- van Buuren S, Groothuis-Oudshoorn K. 2011. mice: multivariate imputation by chained equations in R. *J Stat Softw* 45(3):1–67, <https://doi.org/10.18637/jss.v045.i03>.
- Vernet C, Philippat C, Agier L, Calafat AM, Ye X, Lyon-Caen S, et al. 2019. An empirical validation of the within-subject biospecimens pooling approach to minimize exposure misclassification in biomarker-based studies. *Epidemiology* 30(5):756–767, PMID: 31373935, <https://doi.org/10.1097/EDE.0000000000001056>.
- Viñas R, Watson CS. 2013. Bisphenol S disrupts estradiol-induced nongenomic signaling in a rat pituitary cell line: effects on cell functions. *Environ Health Perspect* 121(3):352–358, PMID: 23458715, <https://doi.org/10.1289/ehp.1205826>.

- Weiss B. 2012. The intersection of neurotoxicology and endocrine disruption. *Neurotoxicology* 33(6):1410–1419, PMID: 22659293, <https://doi.org/10.1016/j.neuro.2012.05.014>.
- Whyatt RM, Liu X, Rauh VA, Calafat AM, Just AC, Hoepner L, et al. 2012. Maternal prenatal urinary phthalate metabolite concentrations and child mental, psychomotor, and behavioral development at 3 years of age. *Environ Health Perspect* 120(2):290–295, PMID: 21893441, <https://doi.org/10.1289/ehp.1103705>.
- Wolstenholme JT, Rissman EF, Connelly JJ. 2011. The role of bisphenol A in shaping the brain, epigenome and behavior. *Horm Behav* 59(3):296–305, PMID: 21029734, <https://doi.org/10.1016/j.yhbeh.2010.10.001>.
- Woodruff TJ, Zota AR, Schwartz JM. 2011. Environmental chemicals in pregnant women in the United States: NHANES 2003–2004. *Environ Health Perspect* 119(6):878–885, PMID: 21233055, <https://doi.org/10.1289/ehp.1002727>.
- Wraw C, Der G, Gale CR, Deary IJ. 2018. Intelligence in youth and health behaviours in middle age. *Intelligence* 69:71–86, PMID: 30100645, <https://doi.org/10.1016/j.intell.2018.04.005>.
- Xu X, Hong X, Xie L, Li T, Yang Y, Zhang Q, et al. 2012. Gestational and lactational exposure to bisphenol-A affects anxiety- and depression-like behaviors in mice. *Horm Behav* 62(4):480–490, PMID: 23240141, <https://doi.org/10.1016/j.yhbeh.2012.08.005>.
- Yao H-Y, Han Y, Gao H, Huang K, Ge X, Xu Y-Y, et al. 2016. Maternal phthalate exposure during the first trimester and serum thyroid hormones in pregnant women and their newborns. *Chemosphere* 157:42–48, PMID: 27208644, <https://doi.org/10.1016/j.chemosphere.2016.05.023>.
- Volton K, Xu Y, Strauss D, Altaye M, Calafat AM, Khoury J. 2011. Prenatal exposure to bisphenol A and phthalates and infant neurobehavior. *Neurotoxicol Teratol* 33(5):558–566, PMID: 21854843, <https://doi.org/10.1016/j.ntt.2011.08.003>.
- Zarean M, Keikha M, Poursafa P, Khalighinejad P, Amin M, Kelishadi R. 2016. A systematic review on the adverse health effects of di-2-ethylhexyl phthalate. *Environ Sci Pollut Res Int* 23(24):24642–24693, PMID: 27714658, <https://doi.org/10.1007/s11356-016-7648-3>.

Note to readers with disabilities: *EHP* strives to ensure that all journal content is accessible to all readers. However, some figures and Supplemental Material published in *EHP* articles may not conform to [508 standards](#) due to the complexity of the information being presented. If you need assistance accessing journal content, please contact ehp508@niehs.nih.gov. Our staff will work with you to assess and meet your accessibility needs within 3 working days.

Supplemental Material

Phthalate and Bisphenol Exposure during Pregnancy and Offspring Nonverbal IQ

Michiel A. van den Dries, Mònica Guxens, Suzanne Spaan, Kelly K. Ferguson, Elise Philips, Susana Santos, Vincent W.V. Jaddoe, Akhgar Ghassabian, Leonardo Trasande, Henning Tiemeier, and Anjoeka Pronk

Table of Contents

Table S1. Variables used in logistic regression model to calculate inverse probability of attrition weights.

Table S2. Descriptive statistics of urinary phthalate metabolite concentrations in ng/ml across pregnancy measured in 1,282 women.

Table S3. Descriptive statistics of urinary bisphenol concentrations in ng/ml across pregnancy measured in 1,282 women.

Table S4. Intra-class correlations between log₁₀ transformed phthalate and bisphenol concentrations across gestational urinary collection phases.

Table S5. Adjusted associations between maternal urine phthalate metabolite and bisphenol concentrations in ug/g creatinine, by timing of pregnancy and sex (n=1,282).

Table S6. Difference in child nonverbal IQ score at age six years per log₁₀ increase in maternal urinary phthalate and bisphenol concentrations in ng/ml with creatinine added as a separate covariate (n=1,282).

Table S7. Difference in child nonverbal IQ score at age six years per log₁₀ increase in individual urinary biomarkers (ug/g creatinine) of phthalate and bisphenol exposure (n=1,282).

Table S8. Inverse probability weighted association between log₁₀ transformed maternal urine phthalate and bisphenol metabolite concentrations in ug/g creatinine and child nonverbal IQ score at age six years (n=1,282).

Table S9. Adjusted association between log₁₀ transformed maternal urinary phthalate metabolite and bisphenol concentration in ug/g creatinine with additional adjustment for the maternal intake of fruit, vegetables and folic acid (n=1,282).

Figure S1. Directed acyclic graph of the prenatal phthalates and bisphenol exposure and child nonverbal IQ association.

Figure S2. Restricted cubic splines (and 95% confidence intervals) of adjusted child nonverbal IQ scores and (untransformed) grouped phthalate metabolite concentrations.

Table S1. Variables used in logistic regression model to calculate inverse probability of attrition weights.

Variables	Explored^a	Included^b
Maternal educational level	X	X
Maternal ethnicity	X	X
Maternal age	X	X
Maternal parity	X	X
Maternal alcohol use during pregnancy	X	X
Maternal tobacco use during pregnancy	X	X
Maternal body mass index	X	X
Household income during pregnancy	X	X
Marital status during pregnancy	X	
Child's sex	X	
Child's birth weight	X	
Gestational age at birth	X	X

a. Characteristics explored in logistic regression models to test whether they differ between included and not-included participants of the Generation R Study cohort.

b. Characteristics that were predictive ($P < 0.20$) of being included in our study.

Table S2. Descriptive statistics of urinary phthalate metabolite concentrations in ng/ml^a across pregnancy measured in 1,282 women

	N	LOD	%<LOD	min	P25	P50	P75	max
LMWP concentrations								
mMP <18 weeks	1274	0.06	0.2%	0	2.7	5.4	9.8	1231.8
mMP 18-25 weeks	1270	0.06	0.2%	0	1.9	3.5	6.4	2486.5
mMP >25 weeks	1269	0.06	0.5%	0	2.0	4.1	8.1	1660
mEP <18 weeks	1274	0.06	0.1%	0	40.5	139.2	484.5	27649.1
mEP 18-25 weeks	1270	0.06	0.0%	1.5	25.1	72.6	227.3	27602.6
mEP >25 weeks	1269	0.06	0.0%	1.4	44.7	127.8	410.9	17428.4
mBP <18 weeks	1274	0.14	0.7%	0.1	7.0	16.1	31.1	2715.6
mBP 18-25 weeks	1270	0.14	0.0%	0.2	5.5	9.7	19.1	23148.1
mBP >25 weeks	1269	0.14	0.2%	0.1	6.1	12.1	25.1	2573.4
mIBP <18 weeks	1274	0.09	0.2%	0.1	9.6	21.4	47.0	1826.6
mIBP 18-25 weeks	1270	0.09	0.0%	0.5	4.6	9.0	18.4	1773.7
mIBP >25 weeks	1269	0.09	0.2%	0.1	9.4	18.1	38.3	2057.1
HMWP concentrations								
<i>DEHP</i>								
mECPP <18 weeks	1274	0.29	0.2%	0.2	8.3	16.3	31.3	942.0
mECPP 18-25 weeks	1270	0.29	0.1%	0.2	5.9	10.7	20.7	93301.2
mECPP >25 weeks	1269	0.29	0.0%	0.7	9.4	18.2	34.3	578.5
mEHHP <18 weeks	1274	0.08	0.2%	0.1	5.8	11.8	22.7	548.8
mEHHP 18-25 weeks	1270	0.08	0.1%	0.1	3.0	5.6	11.0	273.1
mEHHP >25 weeks	1269	0.08	0.2%	0.1	5.2	10.3	19.7	336.9
mEOHP <18 weeks	1274	0.04	0.0%	0.1	3.5	7.7	15.1	416.5
mEOHP 18-25 weeks	1270	0.04	0.0%	0.2	3.7	7.5	16.6	11831
mEOHP >25 weeks	1269	0.04	0.0%	0.4	3.9	7.2	14.0	260.1
mCMHP <18 weeks	1274	0.04	0.1%	0	7.6	14.0	26.5	2729.6
mCMHP 18-25 weeks	1270	0.04	0.2%	0	2.3	4.2	7.5	5497.2
mCMHP >25 weeks	1269	0.04	1.1%	0	1.9	3.5	6.5	165.0
<i>DINP</i>								
mINP <18 weeks	1274	0.18	85.5%	0.1	0.1	0.1	0.1	16.1
mINP 18-25 weeks	1270	0.18	98.6%	0.1	0.1	0.1	0.1	0.6
mINP >25 weeks	1269	0.18	99.9%	0.1	0.1	0.1	0.1	16.9
<i>DIDP</i>								
mIDP <18 weeks	1274	0.89	92.6%	0.6	0.6	0.6	0.6	14.2
mIDP 18-25 weeks	1270	0.89	98.2%	0.6	0.6	0.6	0.6	4.7
mIDP >25 weeks	1269	0.89	96.7%	0.6	0.6	0.6	0.6	17.8
<i>DNOP</i>								
mCPP <18 weeks	1274	0.008	0.0%	0	0.8	1.4	2.8	120.2
mCPP 18-25 weeks	1270	0.008	0.0%	0	0.5	0.9	1.8	75.4
mCPP >25 weeks	1269	0.008	0.1%	0	0.9	1.8	3.2	60.4
mOP <18 weeks	1274	0.25	90.2%	0.2	0.2	0.2	0.2	9.3
mOP 18-25 weeks	1270	0.25	99.4%	0.2	0.2	0.2	0.2	0.8
mOP >25 weeks	1269	0.25	99.3%	0.2	0.2	0.2	0.2	1.7
mCHpP <18 weeks	1274	0.06	99.3%	0	0	0	0	0.2
mCHpP 18-25 weeks	1270	0.06	100.0%	0	0	0	0	0
mCHpP >25 weeks	1269	0.06	99.8%	0	0	0	0	3.7
<i>Other HMWP</i>								
mBzP <18 weeks	1274	0.15	8.2%	0.1	2.3	5.8	12.1	613.8
mBzP 18-25 weeks	1270	0.15	1.7%	0.1	2.2	5.3	11.0	522.9
mBzP >25 weeks	1269	0.15	3.5%	0.1	1.2	3.1	6.5	211.0
mHxP <18 weeks	1274	0.06	23.9%	0	0.1	0.2	0.5	59.9
mHxP 18-25 weeks	1270	0.06	98.8%	0	0	0	0	0.4
mHxP >25 weeks	1269	0.06	98.1%	0	0	0	0	2.4
mHpP <18 weeks	1274	0.30	35.4%	0.2	0.2	0.6	1.5	78.7
mHpP 18-25 weeks	1270	0.30	96.6%	0.2	0.2	0.2	0.2	1.3

mHpP >25 weeks	1269	0.30	98.5%	0.2	0.2	0.2	0.2	24.5
mCHP <18 weeks	1274	0.04	80.3%	0	0	0	0	22.9
mCHP 18-25 weeks	1270	0.04	94.4%	0	0	0	0	1.4
mCHP >25 weeks	1269	0.04	99.3%	0	0	0	0	2.2
PA								
PA <18 weeks	1274	1.11	0.2%	0.8	30.0	56.9	120.3	9450.0
PA 18-25 weeks	1270	1.11	0.1%	0.8	62.5	157.4	288.6	5367.5
PA >25 weeks	1269	1.11	0.4%	0.8	34.3	69.2	132.0	3580.0

Abbreviations: n=number, LOD=limit of detection, min=minimum, P=percentile, max=maximum. LMWP= Low molecular weight phthalates (Mono methyl phthalate (mMP), Mono ethyl phthalate (mEP), Mono-n-butyl phthalate (mBP), Mono-isobutyl phthalate (mIBP)), HMWP= High molecular weight phthalates (Di-2-ethylhexyl phthalates (DEHP) [Mono-(2-ethyl-5-carboxypentyl) phthalate (mECPP), Mono-(2-ethyl-5-hydroxyhexyl) phthalate (mEHHP), Mono-(2-ethyl-5-oxohexyl) phthalate (mEOHP), Mono-[(2-carboxymethyl)hexyl] phthalate (mCMHP)], Di-isononyl phthalate (DINP) [Mono isononyl phthalate (mINP)], Di-isodecylphthalate (DIDP) [Mono-(8-methyl-1-nonyl) phthalate (MIDP)], Di-n-octylphthalate (DNOP) [Mono(3-carboxypropyl) phthalate (mCPP), Monoethyl phthalate (mOP), Mono-(7-carboxy-n-heptyl) phthalate (mCHpP)], other HMWP [Monobenzyl phthalate (mBzP), Mono-hexyl phthalate (mHxP), Mono-2-heptylphthalate (mHpP), Monocyclohexyl phthalate (mCHP)]), PA= Phthalic acid.

a. Values below the LOD are imputed by $LOD/\sqrt{2}$.

Table S3. Descriptive statistics of urinary bisphenol concentrations in ng/ml ^a across pregnancy measured in 1,282 women

	N	LOD	%<LOD	min	P25	P50	P75	max
Bisphenol A <18 weeks	1274	0.15	20.6%	0.1	0.3	1.1	2.8	524.8
Bisphenol A 18-25 weeks	1270	0.15	6.9%	0.1	0.6	1.3	3.0	365
Bisphenol A >25 weeks	1269	0.15	10.1%	0.1	0.6	1.5	3.0	72.9
Bisphenol S <18 weeks	1274	0.05	32.2%	0	0	0.2	0.6	28.4
Bisphenol S 18-25 weeks	1270	0.05	70.2%	0	0	0	0.1	20.0
Bisphenol S >25 weeks	1269	0.05	81.0%	0	0	0	0	46.7
Bisphenol Z <18 weeks	1274	0.12	88.0%	0.1	0.1	0.1	0.1	2.3
Bisphenol Z 18-25 weeks	1270	0.12	96.2%	0.1	0.1	0.1	0.1	0.4
Bisphenol Z >25 weeks	1269	0.12	99.8%	0.1	0.1	0.1	0.1	1.3
Bisphenol B <18 weeks	1274	0.03	90.2%	0	0	0	0	1.6
Bisphenol B 18-25 weeks	1270	0.03	97.6%	0	0	0	0	0.5
Bisphenol B >25 weeks	1269	0.03	100%	0	0	0	0	0
Bisphenol F <18 weeks	1274	0.18	59.7%	0.1	0.1	0.1	0.4	82.7
Bisphenol F 18-25 weeks	1270	0.18	88.8%	0.1	0.1	0.1	0.1	14.3
Bisphenol F >25 weeks	1269	0.18	71.2%	0.1	0.1	0.1	0.5	42.7
Bisphenol AF <18 weeks	1274	0.79	100%	0.6	0.6	0.6	0.6	0.6
Bisphenol AF 18-25 weeks	1270	0.79	100%	0.6	0.6	0.6	0.6	0.6
Bisphenol AF >25 weeks	1269	0.79	100%	0.6	0.6	0.6	0.6	0.6
Bisphenol AP <18 weeks	1274	0.07	92.4%	0.1	0.1	0.1	0.1	6.3
Bisphenol AP 18-25 weeks	1270	0.07	100%	0.1	0.1	0.1	0.1	0.1
Bisphenol AP >25 weeks	1269	0.07	99.9%	0.1	0.1	0.1	0.1	0.2
Bisphenol P <18 weeks	1274	0.11	98.7%	0.1	0.1	0.1	0.1	0.5
Bisphenol P 18-25 weeks	1270	0.11	100%	0.1	0.1	0.1	0.1	0.1
Bisphenol P >25 weeks	1269	0.11	99.3%	0.1	0.1	0.1	0.1	0.2

Abbreviations: n=number, LOD=limit of detection, min=minimum, P=percentile, max=maximum.

a. Values below the LOD are imputed by LOD/√2.

Table S4. Intra-class correlations between log10 transformed phthalate and bisphenol concentrations across gestational urinary collection phases

	ICC ^a	ICC ^b
<i>Phthalate metabolite concentrations in ng/ml^c</i>		
LMWP	0.36	0.63
HMWP	0.21	0.44
DEHP	0.19	0.41
DNOP	0.23	0.47
PA	0.20	0.43
<i>phthalate metabolite concentrations in ug/g creatinine</i>		
LMWP	0.27	0.53
HMWP	0.10	0.26
DEHP	0.10	0.25
DNOP	0.12	0.29
PA	0.12	0.29
<i>Bisphenol metabolite concentrations in ng/ml</i>		
Total bisphenols ^d	0.05	0.14
<i>Bisphenol concentrations in ug/g creatinine</i>		
Total bisphenols ^d	0.00	0.00

a. ICC = Intraclass Correlation Coefficients calculated using a single-measurement, absolute-agreement, and 2-way mixed-effects model

b. ICC = Intraclass Correlation Coefficients calculated using a mean of three measurements, absolute-agreement, and 2-way mixed-effects model

c. Phthalate metabolites are grouped into: low molecular weight phthalate metabolites (**LMWP**) = sum of Mono methyl phthalate, Mono ethyl phthalate, Mono-isobutyl phthalate, and Mono-n-butyl phthalate, high molecular weight phthalate metabolites (**HMWP**) = sum of mono-(2-ethyl-5-carboxypentyl) phthalate, mono-(2-ethyl-5-hydroxyhexyl) phthalate, mono-(2-ethyl-5-ox-hexyl) phthalate, mono-[(2-carboxymethyl)hexyl] phthalate, mono(3-carboxypropyl) phthalate, monobenzyl phthalate, mono-hexyl phthalate, and mono-2-hep-tylphthalate, Di-2-ethylhexyl phthalate metabolites (**DEHP**) = sum of Mono-(2-ethyl-5-carboxypentyl) phthalate, Mono-(2-ethyl-5-hydroxyhexyl) phthalate, Mono-(2-ethyl-5-oxohexyl) phthalate, and Mono-[(2-carboxymethyl)hexyl] phthalate, Di-n-octyl phthalate metabolites (**DNOP**) = Mono(3-carboxypropyl) phthalate, Phthalic acid (**PA**) = a proxy for total phthalate exposure measured in ug/g creatinine.

d. Total bisphenol =-sum of Bisphenol A, bisphenol F, and Bisphenol S.

Table S5. Adjusted ^a associations between maternal urine phthalate metabolite and bisphenol concentrations in ug/g creatinine, by timing of pregnancy and sex (n=1,282).

	Boys (N=647)		Girls (N=635)		P-interaction	P-interaction ^b
	B	95% CI	B	95% CI		
Phthalate metabolite concentrations ^c						
LMWP <18 weeks	-1.02	-3.05, 1.00	-2.38	-4.24, -0.52	0.34	0.40
LMWP 18-25 weeks	0.05	-2.20, 2.29	0.53	-1.53, 2.59	0.74	0.70
LMWP >25 weeks	-2.28	-4.67, 0.11	-0.25	-2.38, 1.87	0.31	0.19
LMWP Averaged	-2.07	-5.19, 1.06	-1.50	-4.21, 1.20	0.85	0.69
HMWP <18 weeks	-1.94	-4.63, 0.75	-1.68	-4.19, 0.83	0.87	0.82
HMWP 18-25 weeks ^d	1.06	-1.74, 3.86	0.90	-1.53, 3.34	0.73	0.95
HMWP >25 weeks ^d	1.59	-2.28, 5.47	0.19	-3.13, 3.50	0.34	0.57
Averaged HMWP	-0.19	-4.95, 4.58	-0.57	-4.80, 3.66	0.69	0.95
DEHP <18 weeks	-1.95	-4.59, 0.69	-1.55	-4.00, 0.89	0.79	0.78
DEHP 18-25 weeks	0.93	-1.81, 3.66	0.78	-1.61, 3.18	0.79	0.95
DEHP >25 weeks	1.58	-2.14, 5.31	0.05	-3.14, 3.24	0.32	0.51
Averaged DEHP	-0.13	-3.68, 3.41	0.03	-3.03, 3.09	0.95	0.91
DNOP <18 weeks	-1.88	-4.47, 0.70	-2.31	-4.71, 0.08	0.77	0.90
DNOP 18-25 weeks	0.86	-1.99, 3.70	-0.41	-3.16, 2.33	0.44	0.55
DNOP >25 weeks	-2.91	-6.49, 0.68	-1.47	-4.67, 1.74	0.82	0.54
Averaged DNOP	-2.62	-7.06, 1.82	-3.63	-7.90, 0.63	0.55	0.81
PA <18 weeks	-1.92	-4.35, 0.51	-1.91	-4.09, 0.27	0.81	0.86
PA 18-25 weeks	2.17	-0.35, 4.68	-0.26	-2.64, 2.12	0.15	0.16
PA >25 weeks	-2.19	-5.34, 0.96	0.07	-2.90, 3.04	0.32	0.28
Averaged PA	-1.15	-5.26, 2.95	-2.15	-6.01, 1.70	0.79	0.80
Bisphenol concentrations						
TB <18 weeks ^e	0.95	-1.15, 3.05	-0.15	-1.99, 1.70	0.68	0.45
TB 18-25 weeks ^f	0.56	-1.68, 2.81	-0.25	-2.48, 1.99	0.54	0.56
TB >25 weeks ^g	1.36	-1.06, 3.78	-1.72	-4.06, 0.63	0.08	0.07
Averaged TB	2.83	-1.06, 6.72	-1.81	-5.48, 1.85	0.13	0.08

a. Adjusted for maternal age, maternal non-verbal IQ, age of the child at assessment, ethnicity categories (Dutch, other-western and non-western), education (low, intermediate and high), income (low, middle and high), marital status, maternal alcohol consumption (no alcohol consumption during pregnancy, alcohol consumption until pregnancy was known, occasionally alcohol consumption during pregnancy and frequently alcohol consumption during pregnancy), BMI, parity categories (0, 1, 2+), and smoking categories (no smoking during pregnancy, smoked until pregnancy was known, smoked during pregnancy).

b. Estimated with the use of the augmented product terms (Buckley et al. 2017).

c. Phthalate metabolites are grouped into: low molecular weight phthalate metabolites (**LMWP**) = sum of Mono methyl phthalate, Mono ethyl phthalate, Mono-isobutyl phthalate, and Mono-n-butyl phthalate, high molecular weight phthalate metabolites (**HMWP**) = sum of mono-(2-ethyl-5-carboxypentyl) phthalate, mono-(2-ethyl-5-hydroxyhexyl) phthalate, mono-(2-ethyl-5-oxo-hexyl) phthalate, mono-[(2-carboxymethyl)hexyl] phthalate, mono(3-carboxypropyl) phthalate, monobenzyl phthalate, mono-hexyl phthalate, and mono-2-heptylphthalate, Di-2-ethylhexyl phthalate metabolites (**DEHP**) = sum of Mono-(2-ethyl-5-carboxypentyl) phthalate, Mono-(2-ethyl-5-hydroxyhexyl) phthalate, Mono-(2-ethyl-5-oxohexyl) phthalate, and Mono-[(2-carboxymethyl)hexyl] phthalate, Di-n-octyl phthalate metabolites (**DNOP**) = Mono(3-carboxypropyl) phthalate, Phthalic acid (**PA**) = a proxy for total phthalate exposure measured in ug/g creatinine.

d. with the exclusion of mono-hexyl phthalate, and mono-2-heptyl phthalate metabolite concentrations

e. Total bisphenol =sum of Bisphenol A, bisphenol F, and Bisphenol S.

f. Total bisphenol =sum of Bisphenol A, and Bisphenol S.

g. Total bisphenol =sum of Bisphenol A and bisphenol F

Table S6. Difference in child non-verbal IQ score at age six years per log10 increase in maternal urinary phthalate and bisphenol concentrations in ng/ml with creatinine added as a separate covariate (n=1,282).

<i>Phthalate metabolites</i> ^b	Adjusted ^a	
	B	95%CI
Σ LMWP metabolites		
<18 weeks	-1.65	-3.02, -0.27
18-25 weeks	0.16	-1.37, 1.69
>25 weeks	-1.31	-2.86, 0.24
Averaged	-1.82	-3.83, 0.19
Σ HMWP metabolites		
<18 weeks	-1.92	-3.88, 0.04
18-25 weeks ^c	0.95	-0.98, 2.88
>25 weeks ^c	0.01	-2.48, 2.50
Averaged	-0.86	-4.08, 2.35
Σ DEHP metabolites		
<18 weeks	-1.80	-3.69, 0.09
18-25 weeks	0.82	-1.05, 2.70
>25 weeks	-0.02	-2.40, 2.36
Averaged	-0.91	-4.00, 2.19
Σ DNOP metabolites		
<18 weeks	-2.03	-3.86, -0.21
18-25 weeks	0.28	-1.66, 2.22
>25 weeks	-2.82	-5.10, -0.54
Averaged	-3.32	-6.31, -0.34
PA metabolites		
<18 weeks	-1.99	-3.68, -0.30
18-25 weeks	0.79	-1.05, 2.64
>25 weeks	-1.48	-3.54, 0.57
Averaged	-2.20	-5.03, 0.64
<hr/>		
<i>Bisphenol metabolites</i>	Adjusted ^a	
	B	95%CI
<18 weeks ^d	0.65	-0.85, 2.15
18-25 weeks ^e	0.02	-1.56, 1.59
>25 weeks ^f	-0.28	-2.00, 1.44
Averaged	0.47	-2.27, 3.21

a. Adjusted for creatinine, maternal age, maternal non-verbal IQ, sex of child, age of the child at assessment, ethnicity, education, income, marital status, maternal alcohol consumption, BMI, parity categories, and smoking.

b Phthalate metabolites are grouped into: low molecular weight phthalate metabolites (**LMWP**) = sum of Mono methyl phthalate, Mono ethyl phthalate, Mono-isobutyl phthalate, and Mono-n-butyl phthalate, high molecular weight phthalate metabolites (**HMWP**) = sum of mono-(2-ethyl-5-carboxypentyl) phthalate, mono-(2-ethyl-5-hydroxyhexyl) phthalate, mono-(2-ethyl-5-ox-hexyl) phthalate, mono-[(2-carboxymethyl)hexyl] phthalate, mono(3-carboxypropyl) phthalate, monobenzyl phthalate, mono-hexyl phthalate, and mono-2-hep-tylphthalate, Di-2-ethylhexyl phthalate metabolites (**DEHP**) = sum of Mono-(2-ethyl-5-carboxypentyl) phthalate, Mono-(2-ethyl-5-hydroxyhexyl) phthalate, Mono-(2-ethyl-5-oxohexyl) phthalate, and Mono-[(2-carboxymethyl)hexyl] phthalate, Di-n-octyl phthalate metabolites (**DNOP**) = Mono(3-carboxypropyl) phthalate, Phthalic acid (**PA**) = a proxy for total phthalate exposure measured in ug/g creatinine.

c. with the exclusion of mono-hexyl phthalate, and mono-2-hep-tyl phthalate metabolite concentrations

d Total bisphenol =--sum of Bisphenol A, bisphenol F, and Bisphenol S.

e Total bisphenol =--sum of Bisphenol A, and Bisphenol S.

f. Total bisphenol =--sum of Bisphenol A and bisphenol F

Table S7. Difference in child non-verbal IQ score at age six years per log10 increase in individual urinary biomarkers (ug/g creatinine) of phthalate and bisphenol exposure (n=1,282).

Unadjusted	<18 weeks		18-25 weeks		>25 weeks		Averaged	
	B	95%CI	B	95%CI	B	95%CI	B	95%CI
mMP	-2.70	-4.42, -0.99	-0.90	-2.75, 0.94	-0.43	-2.26, 1.40	-2.80	-5.33, -0.27
mEP	-2.26	-3.42, -1.09	-1.06	-2.34, 0.23	-1.90	-3.23, -0.56	-3.02	-4.66, -1.39
mIBP	-3.85	-5.38, -2.31	-2.35	-4.06, -0.64	-2.85	-4.68, -1.01	-6.11	-8.46, -3.75
mBP	-2.31	-3.89, -0.72	-1.35	-3.28, 0.58	-1.77	-3.73, 0.18	-4.26	-6.96, -1.56
mECPP	-3.30	-5.14, -1.47	-1.61	-3.54, 0.32	-0.66	-3.19, 1.87	-4.53	-7.52, -1.54
mEHHP	-2.22	-3.86, -0.58	0.10	-1.72, 1.93	0.71	-1.23, 2.66	-1.59	-4.41, 1.22
mEOHP	-2.05	-3.65, -0.46	-0.63	-2.33, 1.08	0.41	-1.65, 2.47	-2.49	-5.33, 0.36
mCMHP	-3.74	-5.71, -1.77	0.31	-1.63, 2.24	0.67	-1.54, 2.87	-2.51	-5.70, 0.68
mCPP	-2.61	-4.46, -0.76	-0.13	-2.20, 1.94	-1.10	-3.64, 1.43	-3.28	-6.47, -0.09
mBzBP	-2.52	-3.74, -1.30	-1.49	-2.96, -0.03	-1.27	-2.81, 0.26	-4.07	-6.10, -2.04
mHxP	0.69	-0.68, 2.07	-	-	-	-	-	-
mHpP	-2.29	-3.84, -0.73	-	-	-	-	-	-
PA	-2.59	-4.32, -0.87	-0.90	-2.72, 0.91	-2.46	-4.75, -0.17	-4.64	-7.57, -1.71
BPA	-0.44	-1.69, 0.82	0.59	-0.99, 2.18	0.25	-1.38, 1.88	-0.44	-1.69, 0.82
BPS	0.99	-0.08, 2.06	0.10	-1.57, 1.76	-	-	1.43	-0.35, 3.22
PBF	2.34	0.85, 3.82	-	-	2.10	0.71, 3.50	4.36	2.35, 6.36
Adjusted ^a	<18 weeks		18-25 weeks		>25 weeks		Averaged	
	B	95%CI	B	95%CI	B	95%CI	B	95%CI
mMP	-1.56	-3.17, 0.05	-0.08	-1.81, 1.65	-0.67	-2.39, 1.06	-1.62	-4.00, 0.76
mEP	-1.30	-2.41, -0.19	0.17	-1.05, 1.39	-0.97	-2.24, 0.29	-1.28	-2.85, 0.29
mIBP	-1.47	-2.97, 0.04	0.49	-1.17, 2.14	0.48	-1.31, 2.27	-0.61	-3.00, 1.78
mBP	-1.03	-2.53, 0.47	1.05	-0.80, 2.90	-0.01	-1.87, 1.86	-0.34	-2.96, 2.28
mECPP	-1.74	-3.48, 0.00	0.12	-1.70, 1.95	0.05	-2.33, 2.42	-1.43	-4.30, 1.43
mEHHP	-1.32	-2.87, 0.22	0.87	-0.85, 2.58	0.64	-1.20, 2.48	-0.16	-2.83, 2.52
mEOHP	-1.23	-2.73, 0.28	0.21	-1.39, 1.82	0.85	-1.09, 2.79	-0.57	-3.27, 2.14
mCMHP	-1.98	-3.84, -0.12	1.44	-0.37, 3.25	0.72	-1.35, 2.79	0.11	-2.91, 3.12
mCPP	-1.98	-3.72, -0.23	0.38	-1.57, 2.32	-2.39	-4.76, -0.02	-2.97	-6.00, 0.06
mBzBP	-0.67	-1.84, 0.50	0.97	-0.46, 2.39	0.21	-1.24, 1.66	0.13	-1.88, 2.13
mHxP	0.55	-0.74, 1.83	-	-	-	-	-	-
mHpP	-0.20	-1.70, 1.29	-	-	-	-	-	-
PA	-1.93	-3.55, -0.31	0.85	-0.87, 2.57	-1.09	-3.25, 1.07	-1.77	-4.57, 1.04
BPA	0.22	-0.95, 1.40	0.26	-1.22, 1.75	-0.18	-1.70, 1.34	0.22	-0.95, 1.40
BPS	0.50	-0.50, 1.50	-0.54	-2.09, 1.01	-	-	0.39	-1.29, 2.06
PBF	1.25	-0.15, 2.65	-	-	0.64	-0.68, 1.96	1.85	-0.07, 3.78

Abbreviations: mMP= mono-methyl phthalate, mEP= mono-ethyl phthalate, mIBP= mono-isobutyl phthalate, mBP= mono-n-butyl phthalate, mECPP= mono- (2-ethyl-5-carboxypentyl) phthalate, mEHHP= mono- (2-ethyl-5-hydroxyhexyl) phthalate, mEOHP= mono-(2-ethyl-5-oxohexyl) phthalate, mCMHP= mono-[(2-carboxymethyl)hexyl] phthalate, mCPP= mono(3-carboxypropyl) phthalate, mBzP= monobenzyl phthalate, mHxP= mono-hexyl phthalate, mHpP= mono-2-heptyl phthalate, PA= phthalic acid, BPA= bisphenol A, BPS= bisphenol S, BPF= bisphenol F.

a. Adjusted for maternal age, maternal non-verbal IQ, sex of child, age of the child at assessment, ethnicity, education, income, marital status, maternal alcohol consumption, BMI, parity categories, and smoking.

Table S8. inverse probability weighted association between log10 transformed maternal urine phthalate and bisphenol metabolite concentrations in ug/g creatinine and child non-verbal IQ score at age six years (n=1,282).

<i>Phthalate metabolites</i> ^c	Adjusted	
	B	95%CI
Σ LMWP metabolites		
<18 weeks	-1.70	-3.06, -0.34
18-25 weeks	0.25	-1.27, 1.76
>25 weeks	-1.15	-2.73, 0.42
Averaged	-1.74	-3.75, 0.28
Σ HMWP metabolites		
<18 weeks	-1.53	-3.36, 0.29
18-25 weeks ^e	1.23	-0.63, 3.08
>25 weeks ^e	0.53	-1.98, 3.05
Averaged	-0.05	-3.23, 3.12
Σ DEHP metabolites		
<18 weeks	-1.49	-3.27, 0.30
18-25 weeks	1.14	-0.67, 2.95
>25 weeks	0.49	-1.93, 2.92
Averaged	0.41	-1.92, 2.75
Σ DNOP metabolites		
<18 weeks	-2.00	-3.73, -0.27
18-25 weeks	0.28	-1.66, 2.22
>25 weeks	-2.81	-5.16, -0.46
Averaged	-3.38	-6.41, -0.34
PA metabolites		
<18 weeks	-1.93	-3.53, -0.32
18-25 weeks	1.02	-0.70, 2.75
>25 weeks	-1.33	-3.47, 0.81
Averaged	-1.77	-4.56, 1.02
	Adjusted	
<i>Bisphenol metabolites</i>	B	95%CI
<18 weeks ^f	0.72	-0.66, 2.11
18-25 weeks ^g	0.22	-1.35, 1.79
>25 weeks ^h	-0.04	-1.72, 1.64
Averaged	1.07	-1.59, 3.73

a. Adjusted for maternal age, maternal non-verbal IQ, sex of child, age of the child at assessment, ethnicity, education, income, marital status, maternal alcohol consumption, BMI, parity categories, and smoking.

b. Adjusted model with the inclusion of the three exposures in one model.

c Phthalate metabolites are grouped into: low molecular weight phthalate metabolites (**LMWP**) = sum of Mono methyl phthalate, Mono ethyl phthalate, Mono-isobutyl phthalate, and Mono-n-butyl phthalate, high molecular weight phthalate metabolites (**HMWP**) = sum of mono-(2-ethyl-5-carboxypentyl) phthalate, mono-(2-ethyl-5-hydroxyhexyl) phthalate, mono-(2-ethyl-5-ox-ohexyl) phthalate, mono-[(2-carboxymethyl)hexyl] phthalate, mono(3-carboxypropyl) phthalate, monobenzyl phthalate, mono-hexyl phthalate, and mono-2-hep-tylphthalate, Di-2-ethylhexyl phthalate metabolites (**DEHP**) = sum of Mono-(2-ethyl-5-carboxypentyl) phthalate, Mono-(2-ethyl-5-hydroxyhexyl) phthalate, Mono-(2-ethyl-5-oxohexyl) phthalate, and Mono-[(2-carboxymethyl)hexyl] phthalate, Di-n-octyl phthalate metabolites (**DNOP**) = Mono(3-carboxypropyl) phthalate, Phthalic acid (**PA**) = a proxy for total phthalate exposure measured in ug/g creatinine.

d. Tests whether exposure from different time points relates in the same manner to non-verbal IQ scores using the multiple informant method (Sanchez et al. 2011).

e. with the exclusion of mono-hexyl phthalate, and mono-2-hep-tyl phthalate metabolite concentrations

f. Total bisphenol =sum of Bisphenol A, bisphenol F, and Bisphenol S.

g Total bisphenol =sum of Bisphenol A, and Bisphenol S.

h. Total bisphenol =sum of Bisphenol A and bisphenol F

Table S9. Adjusted ^a association between log₁₀ transformed maternal urinary phthalate metabolite and bisphenol concentration in ug/g creatinine with additional adjustment for the maternal intake of fruit ^b, vegetables ^b and folic acid (n=1,282).

<i>Phthalate metabolites</i> ^c		B	95% CI
Σ LMWP	<18 weeks	-1.64	-3.01, -0.28
	18-25 weeks	0.29	-1.23, 1.81
	>25 weeks	-1.05	-2.64, 0.54
	Averaged	-1.63	-3.67, 0.41
Σ HMWP	<18 weeks	-1.72	-3.55, 0.11
	18-25 weeks ^d	1.04	-0.80, 2.88
	>25 weeks ^d	0.65	-1.88, 3.18
	Averaged	-0.33	-3.49, 2.82
Σ DEHP	<18 weeks	-1.66	-3.45, 0.13
	18-25 weeks	0.91	-0.89, 2.71
	>25 weeks	0.59	-1.85, 3.02
	Averaged	0.08	-2.23, 2.39
Σ DNOP	<18 weeks	-1.93	-3.68, -0.18
	18-25 weeks	0.40	-1.55, 2.34
	>25 weeks	-2.41	-4.79, -0.03
	Averaged	-2.92	-5.95, 0.12
PA	<18 weeks	-1.85	-3.47, -0.22
	18-25 weeks	0.84	-0.88, 2.56
	>25 weeks	-1.01	-3.18, 1.16
	Averaged	-1.65	-4.45, 1.16
<i>Bisphenol concentrations</i>			
	<18 weeks ^e	0.51	-0.87, 1.90
	18-25 weeks ^f	0.16	-1.40, 1.73
	>25 weeks ^g	0.00	-1.68, 1.68
	Averaged	0.79	-1.87, 3.46

a. Adjusted for maternal age, maternal non-verbal IQ, sex of child, age of the child at assessment, ethnicity, maternal education, income, marital status, maternal alcohol consumption, maternal BMI, parity categories, maternal smoking, maternal fruit intake, maternal vegetable intake, and maternal folic acid intake.

b. maternal fruit and vegetable intake were adjusted for energy intake.

c Phthalate metabolites are grouped into: low molecular weight phthalate metabolites (**LMWP**) = sum of Mono methyl phthalate, Mono ethyl phthalate, Mono-isobutyl phthalate, and Mono-n-butyl phthalate, high molecular weight phthalate metabolites (**HMWP**) = sum of mono-(2-ethyl-5-carboxypentyl) phthalate, mono-(2-ethyl-5-hydroxyhexyl) phthalate, mono-(2-ethyl-5-ox-o-hexyl) phthalate, mono-[(2-carboxymethyl)hexyl] phthalate, mono(3-carboxypropyl) phthalate, monobenzyl phthalate, mono-hexyl phthalate, and mono-2-hep-tylphthalate, Di-2-ethylhexyl phthalate metabolites (**DEHP**) = sum of Mono-(2-ethyl-5-carboxypentyl) phthalate, Mono-(2-ethyl-5-hydroxyhexyl) phthalate, Mono-(2-ethyl-5-oxo-hexyl) phthalate, and Mono-[(2-carboxymethyl)hexyl] phthalate, Di-n-octyl phthalate metabolites (**DNOP**) = Mono(3-carboxypropyl) phthalate, Phthalic acid (**PA**) = a proxy for total phthalate exposure measured in ug/g creatinine.

d. with the exclusion of mono-hexyl phthalate, and mono-2-hep-tyl phthalate metabolite concentrations

e. Total bisphenol =-sum of Bisphenol A, bisphenol F, and Bisphenol S.

f. Total bisphenol =-sum of Bisphenol A, and Bisphenol S.

g. Total bisphenol =-sum of Bisphenol A and bisphenol F

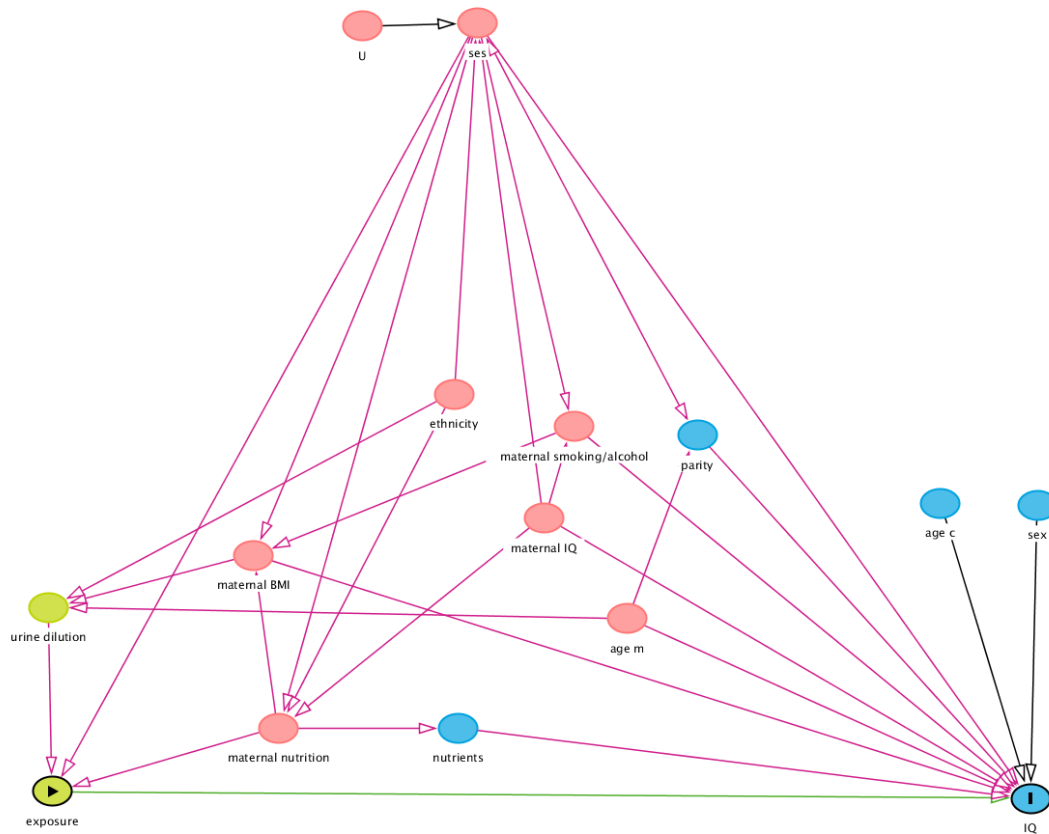


Figure S1. Directed Acyclic Graph of the prenatal phthalates and bisphenol exposure and child non-verbal IQ association.

Potential adjustment variables were selected a priori defined with a Directed Acyclic Graph (DAG) using the Dagitty software (Textor et al. 2017). The DAG was based on previous studies of phthalates and bisphenol exposure and child neurodevelopment and on biologically plausible covariate–exposure and covariate–outcome associations observed in our data. Green circles represent ancestors of the exposure, blue circles ancestors of the outcome, pink circles ancestors of both exposure and outcome. **Maternal BMI**= Maternal body mass index, **ses**= socioeconomic status (maternal education, household income and marital status), age c= child age at assessment, age m= age mother, IQ= nonverbal intelligent quotient, U=unobserved ancestor of socioeconomic status.

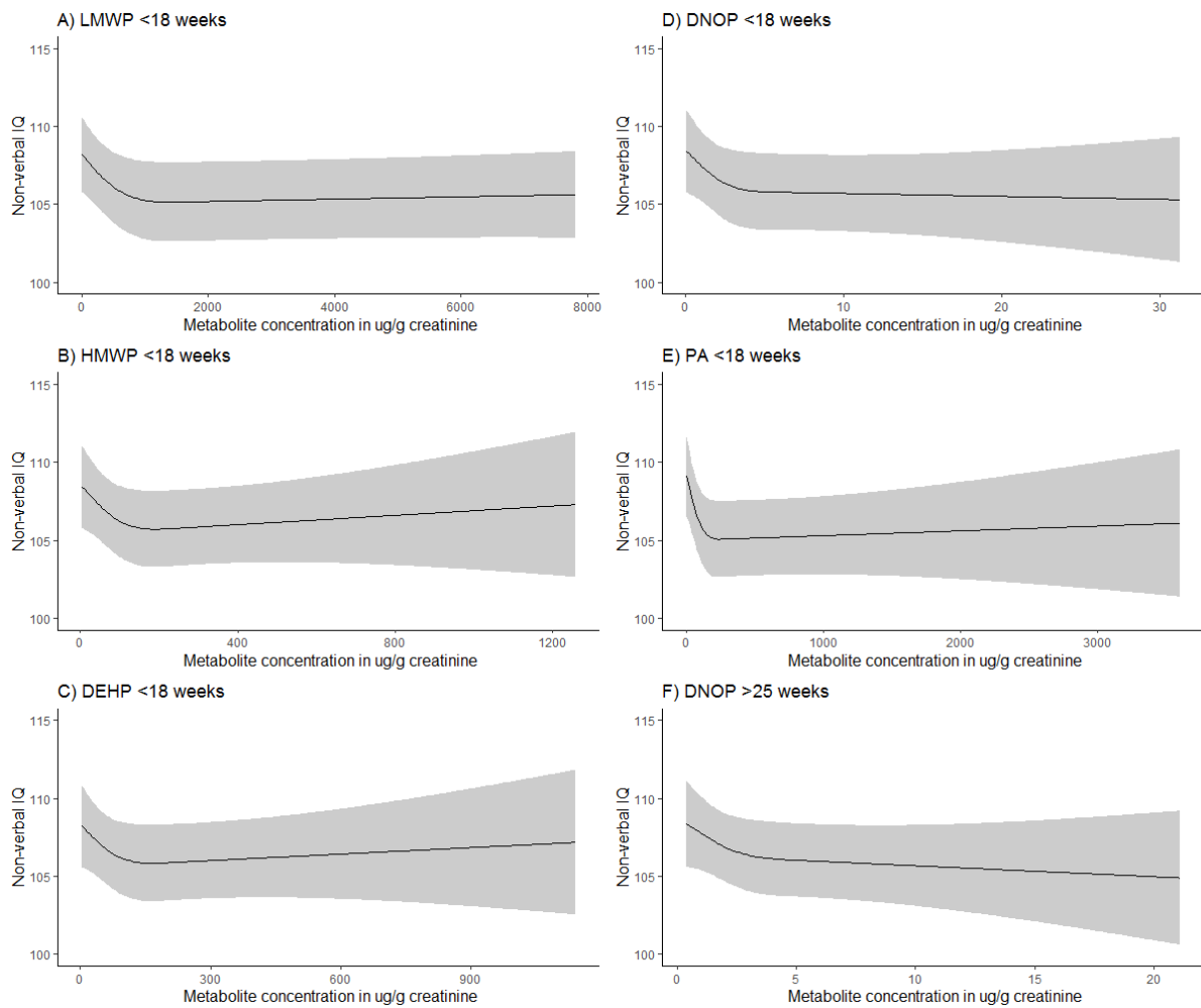


Figure S2. Restricted cubic splines (and 95% confidence intervals) of adjusted child non-verbal IQ scores and (untransformed) grouped phthalate metabolite concentrations. A) LMWP= Low molecular weight phthalates (sum of mono methyl phthalate, mono ethyl phthalate, mono-n-butyl phthalate, mono-isobutyl phthalate) metabolites measured at <18 weeks of gestation. **B) HMWP=** High molecular weight phthalates (sum of mono-(2-ethyl-5-carboxypentyl) phthalate (mECP), mono-(2-ethyl-5-hydroxyhexyl) phthalate (mEHHP), mono(2-ethyl-5-oxohexyl) phthalate (mEOHP), mono-[(2-carboxymethyl) hexyl] phthalate (mCMHP), Mono(3-carboxypropyl) phthalate (mCPP), monobenzyl phthalate, mono-hexyl phthalate, Mono-2-heptyl phthalate) metabolites measured at <18 weeks of gestation. **C) DEHP=** Di-2-ethylhexyl phthalates (sum of mECP, mEHHP, mEOHP, and mCMHP) metabolites measured at <18 weeks of gestation. **D) DNOP=** Di-n-octyl phthalate (mCPP) metabolites measured at <18 weeks of gestation. **E) PA=**phthalic acid measured at <18 weeks of gestation. **F) DNOP** metabolites measured at >25 weeks of gestation.