

Eddy covariance measurements of CH₄ and N₂O using quantum cascade laser spectrometry on peat lands

P.S. Kroon

A. Hensen

W.H. van 't Veen

Presented at the NitroEurope meeting in Paestum, Italy (February 2007)

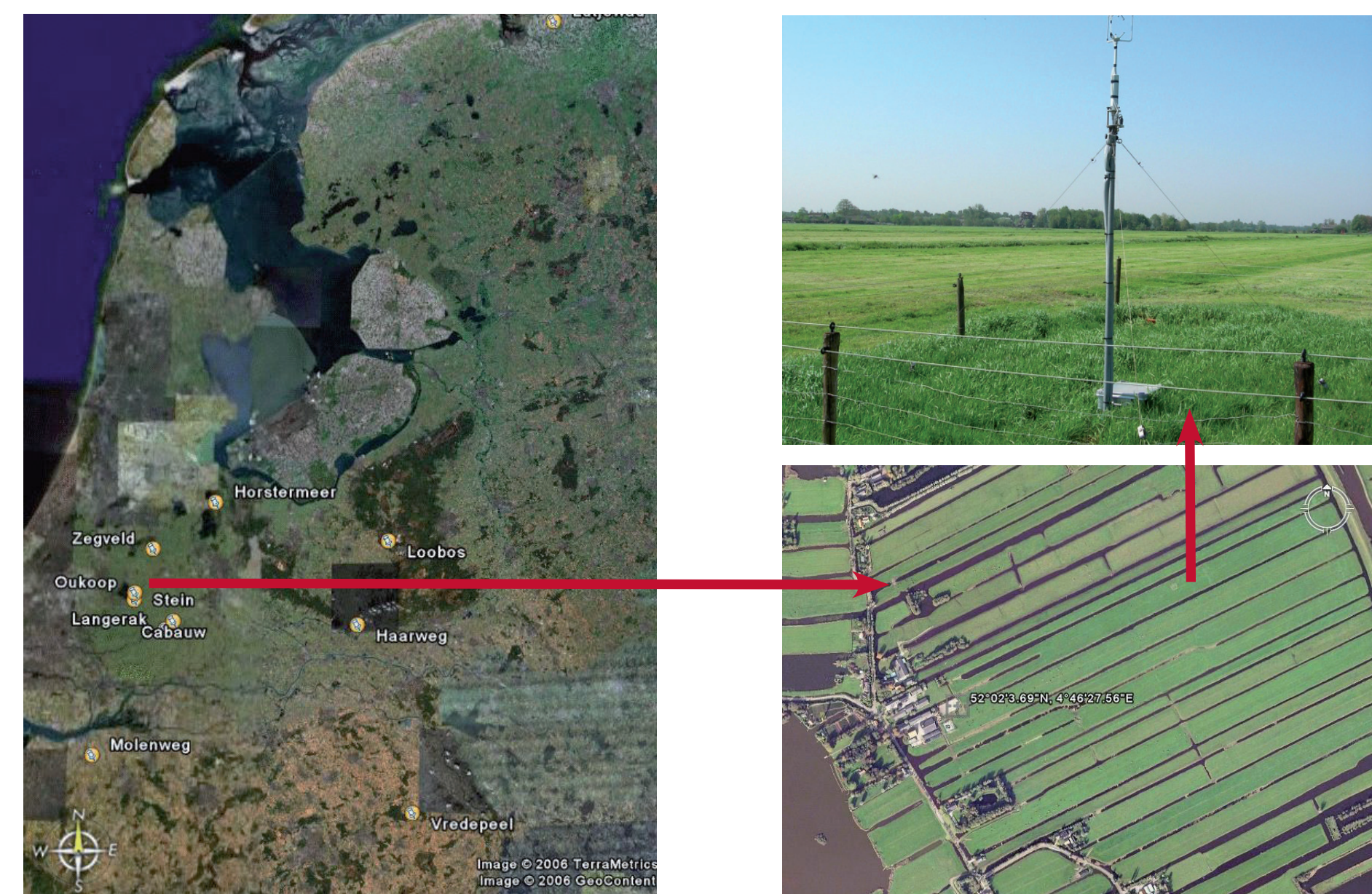
August 2007

Eddy covariance measurements of CH₄ and N₂O using quantum cascade laser spectrometry on peat lands

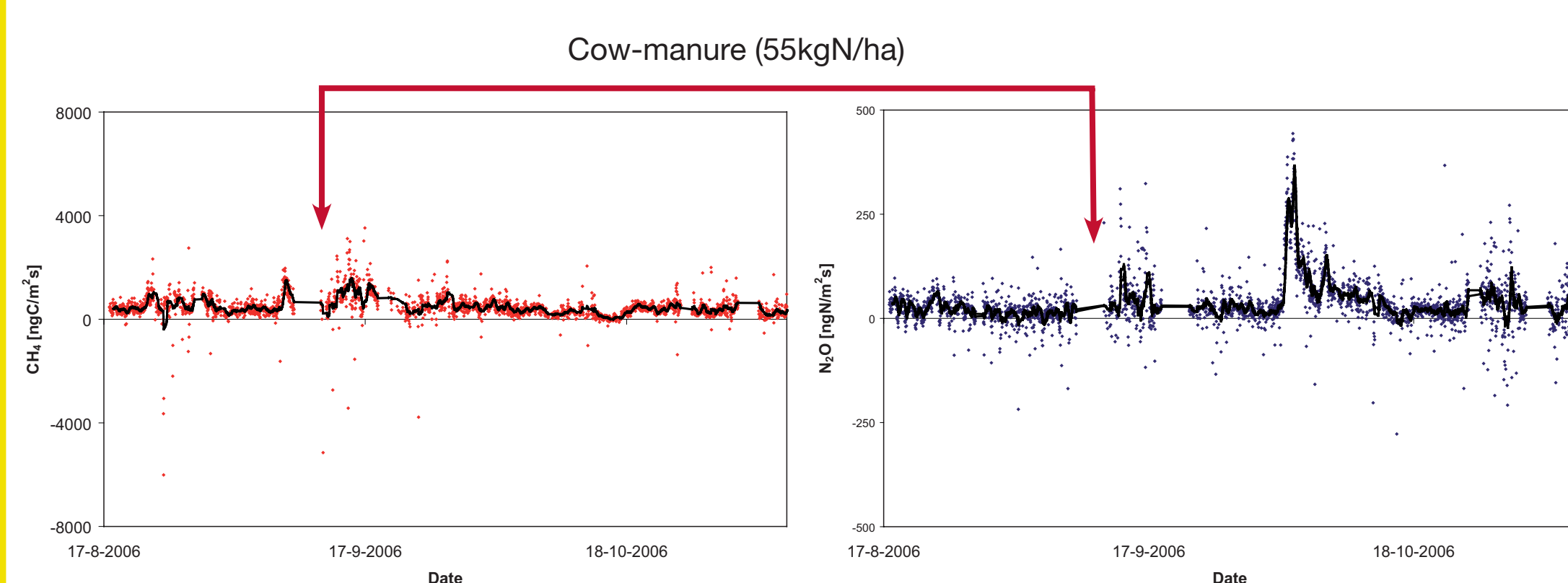
Authors: Petra Kroon, Arjan Hensen and Hans van 't Veen

Introduction

- A quantum cascade laser spectrometer (Aerodyne Research Inc.) is used for eddy covariance measurements of CH₄ and N₂O exchange over an intensively managed peat grassland at Reeuwijk in the Netherlands (N 52°01'15", E 4°01'17"). This system runs continuously since August 2006 (coverage 87%). Results are shown from the first EC-measurements. (Sampling frequency of 10 Hz, calibrated, running mean of 120 s, averaged over 30-minutes, fetch and steady state criteria checked)



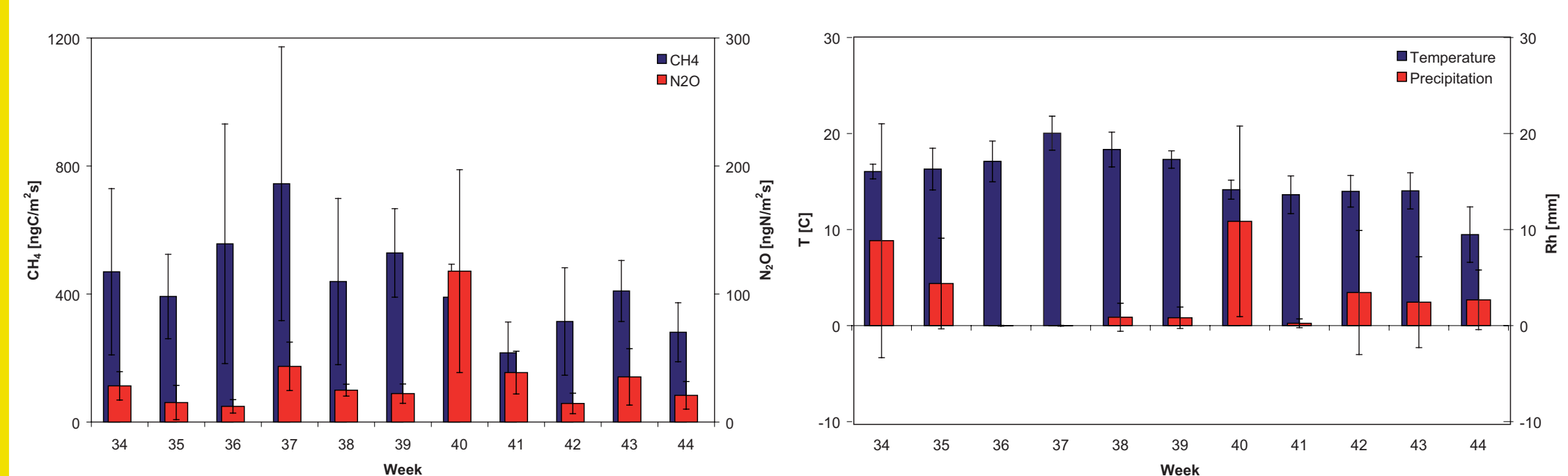
CH₄ and N₂O exchange (30-min)



Average emission:

- 464±485 ngC/m²s (2.23±2.33 mg/m²hr)
- 38±64 ngN/m²s (0.21±0.36 mg/m²hr)

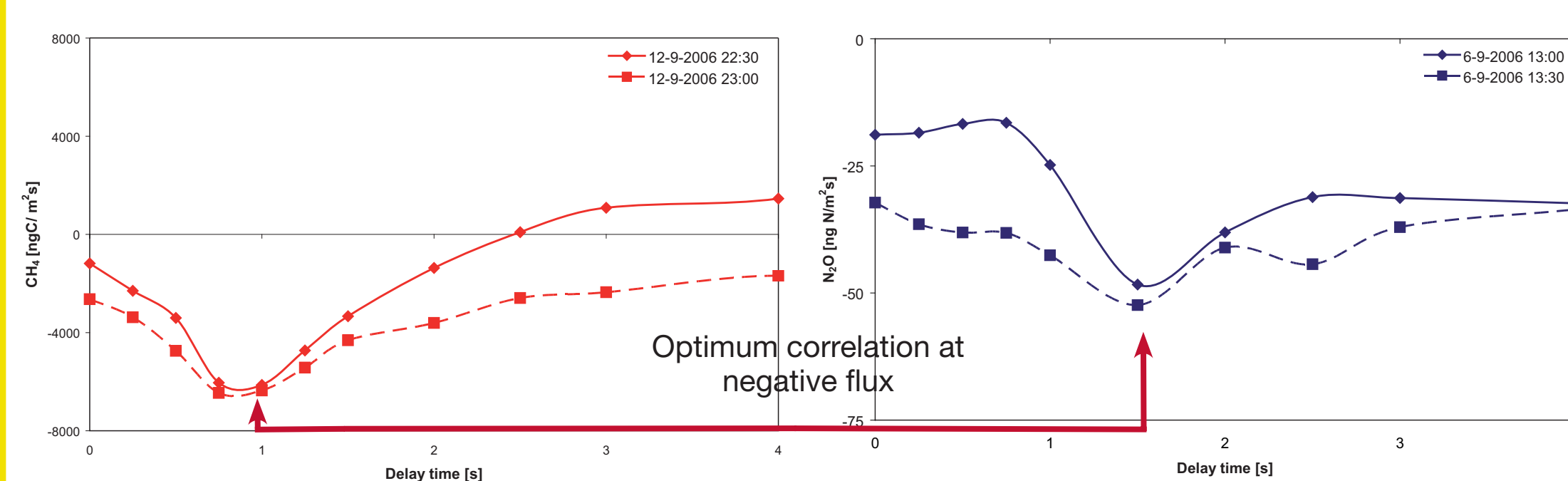
CH₄ and N₂O exchange (weekly)



Management:

- 55 kgN/ha cow-manure in week 37
- N₂O peak in week 40 with rain event

CH₄ and N₂O uptake



Percentage uptake (none-Webbcorrection):

- 5% negative CH₄ fluxes
- 12% negative N₂O fluxes

Conclusions and acknowledgments

- N₂O and CH₄ emissions can be measured continuously using a quantum cascade laser.
- Average fluxes over August to November 2006 were 464 ngC/m²s and 38 ngN/m²s.
- Uptake of CH₄ and N₂O occurred.
- The help of Mark Zahniser (Aerodyne Research Inc.) and the farmer Theo van Eyk is gratefully acknowledged.
- The project is carried out in the framework of the Dutch BSIK program in cooperation with Wageningen University and VU Amsterdam.

Eddy covariance measurements of CH₄ and N₂O using quantum cascade laser spectrometry on peat lands

p.kroon@ecn.nl, tel: +31224-564308

January 2007