

G-MOSAIC

Change detection and damage assessment based on the new generation radar satellites for G-MOSAIC pilot services

R.J. Dekker, A.C. van den Broek

Netherlands Organisation for Applied Scientific Research (TNO)

ABSTRACT

Within the GMES initiative, several projects focus on supporting the European Union Common Foreign and Security Policy (CFSP) and the Common Security and Defence Policy (CSDP). Two of them are GMOSS (2004-2008) and, addressed in this paper, G-MOSAIC (2009-2011). GMOSS was the predecessor of G-MOSAIC. An important issue in GMOSS was to connect the information needs following from the CFSP security priorities to Earth Observation (EO) technology. The aim of G-MOSAIC is to go a step further and develop geospatial information products and pilot services for the EU external relations policies (CFSP/CSDP) and security end-users. Pilot services to which TNO contributes, are developed in Cooperation with DLR, e-GEOS, GMY, Infoterra, Joanneum Research, JRC, and others. Key technology that is discussed is radar change detection. Output products give information on vessel traffic, harbour activities, transhipment of goods, timber logging, earthquake damage, and reconstruction after crisis. Present radar EO systems turn out to be well suited to monitor different activities due to different scattering mechanisms, and irrespective of cloud cover.

WORK PROGRAMME, METHODOLOGY

Synthetic aperture radar: Since 2006 a new generation of radar satellites is operational, succeeding the successful generation of ERS, JERS, Envisat and Radarsat-1. Representatives of the new generation are TerraSAR-X, Cosmo-SkyMed, Radarsat-2, and ALOS PALSAR, see Table 1. Most important properties of these satellites are a higher resolution (1-10 m) combined with polarimetric imaging, and continued all-weather coverage, that make them pre-eminently suitable for security applications.

Synthetic Aperture Radar (SAR) is an active instrument, it transmits a signal to the earth and the returned scattering shows the characteristics of the illuminated surface. The radar wavelength determines the ability to penetrate vegetation and soils; the longer the wavelength, the deeper the

REFERENCES

- > Michael Alkin and Achim Maas, 2009, G-MOSAIC WP21300 Internal Deliverable 1 and 2.
- > Burnley, C., D. Buda, and F. Kayitakire. 2008. *Quantitative global model for armed conflict risk assessment*. Ispra: Joint Research Centre. Site: http://isfera.jrc.ec.europa.eu/Activities/ProjectPortfolio/Documents/2005_Conflict_Modeling/Conflict-Risk-Assessment-June2008.pdf, last accessed on Feb. 10, 2009.
- > Buhaug, Halvard, and Jan Ketil Rod. (2005) Local Determinants of African Civil Wars, 1970–2001. Paper presented at 46th annual ISA Convention, Honolulu, Hawaii. Site: http://www.allacademic.com/meta/p71854_index.html
- > Raleigh, Clionadh and Henrik Urdal (2007): *Climate change, environmental degradation and armed conflict*. Political Geography 26: 674-694.
- > United Nations Development Programme (1994): Human Development Report.
- > United Nations, Security Council, Final report of the Group of Experts on the Democratic Republic of the Congo, S/2009/603, 23 Nov. 2009.

penetration. The polarisation determines the observed scattering mechanism. In general there are three scattering mechanisms:

- > Double-bounce scattering from wall-ground or other orthogonal structures that function as an efficient radar reflector. Dependent on the size of such a structure, the backscatter can be quite strong. Double-bounce is visible in HH and VV.
- > Rough-surface scattering. This type of scattering is diffuse and often weaker than double-bounce. Rough-surface scattering is visible in HH and VV.
- > Volume or canopy scattering. This type of scattering occurs when the radar waves penetrate a medium such as vegetation canopies. The longer the wavelength, the deeper the penetration, and the stronger the radar return. Volume scattering is visible in all polarisations, but because double-bounce and rough-surface are not, HV and VH (referred to as cross polarisations) exclusively show volume scattering.

Platform	Launch	Band 1)	Polarisation 2)	Resolution	Status
Seasat	1978	L	HH	25 m	Ended 1978
ERS 1	1991	C	VV	30 m	Ended 2000
JERS 1	1992	L	HH	18 m	Ended 1998
ERS 2	1995	C	VV	30 m	Operational
Radarsat 1	1995	C	HH	10 m	Operational
Envisat	2002	C	Dual pol	30 m	Operational
ALOS PALSAR	2006	L	Quad pol	10 m	Operational
Radarsat 2	2007	C	Quad pol	3 m	Operational
TerraSAR-X	2007	X	Dual pol	1 m	Operational
Cosmo-SkyMed	2007	X	Dual pol	1 m	Operational

1) L-band = 23 cm; C-band = 5 cm; X-band = 3 cm

2) Dual pol selectable from HH/VV, HH/HV, and VV/VH; Quad pol HH, HV, VH, VV

Table 1: Overview of past and present radar EO satellites.

Radar change detection: Radar change detection is a technology that detects the differences between two or more radar acquisitions of the same area, in time. First radar change detection studies, coherent and non-coherent, date back to the early nineties. Coherent change detection takes into account the amplitude and phase of the radar image, while non-coherent change detection only considers the amplitude. For both, the imaging geometry of the acquisitions has to be the same, sometimes referred

to as repeat-pass geometry. Because co-registration for coherent change detection is more demanding, chosen was to apply non-coherent change detection.

An important issue in non-coherent radar change detection has always been the reduction of speckle noise. The chosen speckle filtering method showed good results applied to medium-resolution SAR imagery (ERS, Envisat, Radarsat-1) in the past. Output is a vector change layer.

Radar damage assessment: Damage assessment can be considered as an application of change detection. A distinction can be made between detailed damage assessment that focuses on damages at building-level (e.g. applying the method chosen in Section 3.1), and grid-based damage assessment. The latter is based on the average difference or correlation per grid-cell, or a combination.

RESULTS

Pilot services that make use of radar change detection technology and that are addressed here, are coastal and harbour surveillance, illegal timber logging, damage assessment, and reconstruction monitoring. Up to now several geospatial information products were produced to evaluate the pilot services.

One product shows the activities that take place in the harbour of Burgas, Bulgaria, based on detailed change detection applied to TerraSAR-X images. Relocated ships, cranes, trains, sea-containers, and goods are visible (see Figure 1 - left).

Another product shows vessel movements in Radarsat-2 images, in and outside the port of Rotterdam, The Netherlands. The image is enriched with data from AIS transponders (Automatic Identification System) mounted on the larger ships, to give an overview of the vessel traffic. Correlation of non-stationary objects in radar and AIS has to be compensated for an azimuth shift caused by the Doppler processing of SAR images.

A third product shows areas of timber logging in the Democratic Republic of the Congo (DRC) based on change detection applied to ALOS PALSAR images. Comparing these loggings with the concession areas will show if these loggings are legal or not. Especially in this product the volume-scattering properties of long-wavelength cross polarisations are used, see Figure 1 (middle).

A fourth product is a damage assessment of Port-au-Prince, Haiti, after the earthquake on 12 January 2011, based on TerraSAR-X and Cosmo-SkyMed images. Two assessments were done, one grid-based with cells of 200 m, and one detailed assessment at building level. Results were compared with the Post

Disaster Needs Assessment (PDNA) of UNITAR/UNOSAT, JRC, and the World Bank. The grid-based damage assessment shows the best results, mainly in the more regular structured areas such as the city centre, that return more double-bounce scattering. Damage in the shanty areas is less visible, see Figure 1 (right).

A fifth product shows reconstruction activities in Banda Aceh, on Sumatra, Indonesia, after the tsunami on 26 December 2004, based on TerraSAR-X images.

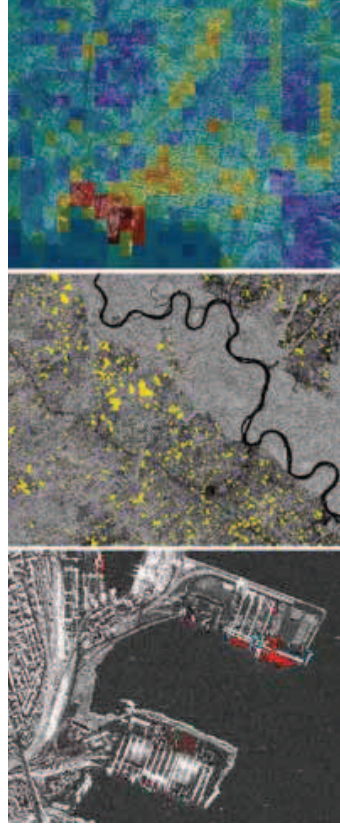


Figure 1: Harbour activities in Burgas, Bulgaria (left), timber logging in DRG (middle), and grid-based damage assessment in Port-au-Prince, Haiti (right). © Infaterra GmbH. © JAXA/METI. Data were provided by the European Space Agency

CONCLUSION

In this paper the high-resolution radar and change detection technology that is used in several G-MOSAIC pilot services is discussed. With these pilot services different information products were generated for intelligence and crisis management. The products give information on vessel traffic, harbour activities, transshipment of goods, timber logging, earthquake damage, and reconstruction after crisis. Present radar EO systems turn out to be well suited to monitor different activities due to different scattering mechanisms, and irrespective of cloud cover. Correlation of non-stationary objects in radar and other data has to be compensated for an azimuth shift caused by the Doppler processing of SAR images. Due to the scatter mechanisms in urban areas, damage in the shanty areas is less visible than in the more regular structured areas such as the city centre.

REFERENCES

- > B. Jasani, M. Pesaresi, S. Schneiderbauer, and G. Zeug, Eds., *Remote Sensing from Space: Supporting International Peace and Security*. Dordrecht: Springer Science and Business Media B.V., 2009.
- > G-MOSAIC Home. <http://www.gmes-gmosaic.eu/> [accessed 21 January 2011]
- > Freeman and S.L. Durdan, "A Three-Component Scattering Model for Polarimetric SAR Data," *IEEE Trans. Geosc. Remote Sensing*, vol. 36 no. 3 pp. 963-973, May 1998.
- > R.G. White, "Change detection in SAR imagery," *Int. J. Remote Sensing*, vol. 12, no. 2, pp. 339-360, 1991.
- > J. Cihlar, T.J. Pultz, and A.L. Gray, "Change detection with synthetic aperture radar," *Int. J. Remote Sensing*, vol. 13, no. 3, pp. 401-414, 1992.
- > C.L. Werner, S. Hensley, R.M. Goldstein, P.A. Rosen, and H.A. Zebker, "Techniques and Applications of SAR Interferometry for ERS-1: Topographic Mapping, Change Detection, and Slope Measurement," in *Proc. First ERS-1 Symposium*, Cannes, France, 4-6 November 1992, pp. 205-210.
- > R.J. Dekker, "Speckle filtering in satellite SAR change detection imagery," *Int. J. Remote Sensing*, vol. 19, no. 6, pp. 1133-1146, 1998.
- > R.J. Dekker, "Monitoring the urbanisation of Dar es Salaam using ERS SAR data," in *Int. Archives of Photogrammetry and Remote Sensing*. Vol. XXXIII, part B1, Amsterdam, The Netherlands, 16-23 July 2000, pp. 62-69.
- > H. Greidanus, R. Dekker, J.J. Caliz, and A. Rodrigues, "Tsunami damage assessment with satellite radar," in *Proc. URSI Commission F Symposium on Microwave Remote Sensing of the Earth, Oceans, Ice, and Atmosphere*, Barza d'Ispra, Italy, 20-21 April 2005.
- > R.J. Dekker, "Monitoring Urban Development Using Envisat ASAR," in *Proc. First Workshop of the EARS&L Special Interest Group Urban Remote Sensing*, Berlin, Germany, 2-3 March 2006.
- > R.J. Dekker, "High-resolution radar damage assessment after the earthquake in Haiti on 12 January 2010," *IEEE J. Sel. Topics Appl. Earth Observ.*, submitted, 2011.