

Organophosphate Pesticide Metabolite Concentrations in Urine during Pregnancy and Offspring Nonverbal IQ at Age 6 Years

Todd A. Jusko,^{1,2} Michiel A. van den Dries,^{3,4} Anjoeka Pronk,⁵ Pamela A. Shaw,⁶ Mònica Guxens,^{3,7,8,9} Suzanne Spaan,⁵ Vincent W. Jaddoe,^{4,10,11} Henning Tiemeier,^{3,10,12} and Matthew P. Longnecker¹³

¹Department of Public Health Sciences, University of Rochester School of Medicine and Dentistry, Rochester, New York, USA

²Department of Environmental Medicine, University of Rochester School of Medicine and Dentistry, Rochester, New York, USA

³Department of Child and Adolescent Psychiatry, Erasmus University Medical Centre–Sophia Children’s Hospital, Rotterdam, Netherlands

⁴The Generation R Study Group, Erasmus Medical Center, Rotterdam, Netherlands

⁵Department of Risk Analysis for Products in Development, Netherlands Organisation for Applied Scientific Research (TNO), Zeist, Netherlands

⁶Department of Biostatistics and Epidemiology, Perelman School of Medicine, University of Pennsylvania, Philadelphia, Pennsylvania, USA

⁷ISGlobal, Center for Research in Environmental Epidemiology, Barcelona, Spain

⁸Pompeu Fabra University, Barcelona, Spain

⁹Spanish Consortium for Research on Epidemiology and Public Health (CIBERESP), Instituto de Salud Carlos III, Spain

¹⁰Department of Epidemiology, Erasmus University Medical Centre, Rotterdam, Netherlands

¹¹Department of Pediatrics, Erasmus Medical Center, Rotterdam, Netherlands

¹²Department of Social and Behavioral Sciences, Harvard T.H. Chan School of Public Health, Boston, Massachusetts, USA

¹³Epidemiology Branch, National Institute of Environmental Health Sciences (NIEHS), National Institutes of Health (NIH), Department of Health and Human Services, Durham, North Carolina, USA

BACKGROUND: Susceptibility to organophosphate (OP) pesticide neurotoxicity may be greatest during the prenatal period; however, previous studies have produced mixed findings concerning *in utero* OP pesticide exposure and child cognition.

OBJECTIVES: Our objective was to determine whether maternal urinary concentrations of OP pesticide metabolites are inversely associated with child nonverbal IQ at 6 y of age and to examine potential effect measure modification by the *PONI* gene.

METHODS: Data came from 708 mother–child pairs participating in the Generation R Study. Maternal urine concentrations of six dialkylphosphates (DAPs), collected at <18, 18–25, and >25 weeks of gestation, were determined. Child nonverbal IQ was measured at 6 y of age using the Mosaics and Categories subtests from the Snijders-Oomen Nonverbal Intelligence Test–Revised. *PONI* was determined in cord blood for 474 infants. Multiple linear regression models were fit to estimate the DAP–IQ associations and *PONI* interactions.

RESULTS: Overall, associations between child nonverbal IQ and maternal DAP concentrations were small and imprecise, and these associations were inconsistent across urine sampling periods. However, for a 10-fold difference in total DAP concentration for the >25 weeks of gestation samples, adjusted child nonverbal IQ was 3.9 points lower (95% CI: –7.5, –0.3). Heterogeneity in the DAP–IQ association by *PONI* gene allele status was not observed ($n = 474$).

CONCLUSIONS: Consistent evidence of an association between higher maternal urinary DAP concentrations and lower child IQ scores at 6 y of age was not observed. There was some evidence for an inverse relation of child nonverbal IQ and late pregnancy urinary DAPs, but the estimated association was imprecise. <https://doi.org/10.1289/EHP3024>

Introduction

Organophosphate (OP) pesticides have been used for more than 50 y because they enhance crop yield and degrade rapidly. Some of the active pesticide, however, stays on food crops, and metabolites are often detected in human consumers (Eaton et al. 2008). Most exposure in the general population is from diet (Lop et al. 2017; Sokoloff et al. 2016; van den Dries et al. 2018), though other exposure routes can be important in selected populations (Eskenezazi et al. 1999). OP pesticide

toxicity at high doses, via inhibition of acetylcholinesterase, has been well described (O’Malley 1997); whether toxicity at lower doses occurs, via other mechanisms (Burke et al. 2017; Terry 2012), is unclear. Because susceptibility to adverse effects on cognition may be greatest during early development, many studies of low-dose exposure have focused on prenatal exposure, and the results have been suggestive in some cases (Bouchard et al. 2011; Engel et al. 2007, 2011; Eskenazi et al. 2007) but inconclusive overall (Engel et al. 2016). This heterogeneity may be explained by underlying genetic factors, specifically the *PONI* gene, which may modify the association between organophosphate pesticide exposure and cognition (Engel et al. 2016; Huen et al. 2010). Although the use of OP pesticides has been reduced, recent data show that the levels of metabolites in population biomonitoring studies have been stable for at least the first decade of this millennium (CDC 2009).

Among the dozens of OP pesticides in current use, some yield specific metabolites; most, however, degrade to one or more dialkylphosphates (DAPs), and the measurement of six DAPs in urine is the most-used method of estimating exposure to this class of compounds (Bravo et al. 2002). The concentration of DAPs in urine reflects exposure in the past day or two, and individual exposure varies substantially from day to day, depending on diet (Sokoloff et al. 2016). This intraindividual variability means that estimates of exposure are improved if urine specimens are collected from an individual at more than one point in time. Often, however, epidemiologic studies have had at most two urine specimens per subject, which may have limited their statistical power to detect adverse associations (Perrier et al. 2016).

Address correspondence to T.A. Jusko, Department of Public Health Sciences, University of Rochester School of Medicine and Dentistry, 265 Crittenden Blvd., Box CU420644, Rochester, NY 14642 USA. Telephone: (585) 273-2849. Email: todd_jusko@urmc.rochester.edu

Supplemental Material is available online (<https://doi.org/10.1289/EHP3024>).

While this manuscript was being prepared, M.P.L. was working part-time at Ramboll Environ, with support from the American Chemistry Council. The work on this manuscript was done solely with NIEHS support (M.P.L. as a government contractor). Each author certifies that their freedom to design, conduct, interpret, and publish research was not compromised by any sponsor.

All other authors declare they have no actual or potential competing financial interests.

Received 27 October 2017; Revised 9 October 2018; Accepted 10 December 2018; Published 28 January 2019.

Note to readers with disabilities: *EHP* strives to ensure that all journal content is accessible to all readers. However, some figures and Supplemental Material published in *EHP* articles may not conform to 508 standards due to the complexity of the information being presented. If you need assistance accessing journal content, please contact ehponline@niehs.nih.gov. Our staff will work with you to assess and meet your accessibility needs within 3 working days.

The present study examines maternal urinary concentrations of OP pesticide metabolites in relation to child nonverbal IQ at 6 y of age, with potential effect measure modification by the *PON1* gene. Maternal urinary concentrations of OP pesticide metabolites were measured at three time points during pregnancy in the present study, with the intent to reduce possible exposure misclassification.

Methods

Study Population and Follow-Up

Generation R is a prospective population-based birth cohort designed to identify early environmental and genetic determinants of development throughout life and has been described in detail previously (Kooijman et al. 2016). Briefly, all mothers who resided in the study area in Rotterdam, Netherlands, and had a delivery date between April 2002 and January 2006 were eligible. Mothers were enrolled during pregnancy or in the first months after the birth of their child when newborns visited the routine child health centers. Among the 9,778 mothers who participated in the study, 8,879 (91%) were enrolled during pregnancy (Figure 1). Among the 4,918 women enrolled during pregnancy between February 2004 and January 2006, spot urine specimens during early, middle, and late pregnancy (<18, 18–25, >25 weeks of gestational age, respectively) were collected at the time of routine ultrasound examinations, which occurred throughout the day. In total, 2,083 women provided a complete set of three urine specimens. Mothers provided written informed consent for themselves and their children at the time of enrollment. The study protocol underwent human subjects review at Erasmus Medical Center, Rotterdam, Netherlands (institutional review board registration no. IRB00001482).

When the child was 6 y of age, families were invited to participate in an in-person follow-up to collect cognitive data, additional biospecimens, and sociodemographic and health data. Of the 2,083 mother–child pairs with three pregnancy urine specimens, 1,998 (96%) were followed to 6 y of age. From these 1,998 mother–child pairs with three prenatal urine specimens, women with missing data on maternal age and children with missing data on sex, birth weight, and without Child Behavior Checklist (CBCL) data at 6 y of age were excluded (Figure 1). From those, 16 participants were excluded from the lab analyses due to insufficient urine specimens. This resulted in a total of 1,449 mother–child pairs. From these 1,449 pairs, 800 mothers were selected using a random number generator for analyses of DAP metabolites in the maternal urine samples. Given our assumptions, 800 mothers was sufficient to provide 80% power to detect a 2-point decrement in IQ per log_e unit increase in average DAP concentration (calculations not shown). The final analytic sample included 708 mother–child pairs with exposure and outcome data and who had a sufficient volume of urine for analysis.

Urine Collection and Analysis of DAP Metabolites

Details of maternal and 6-y-old child urine specimen collection have been described elsewhere (Kruithof et al. 2014). All urine samples were collected between 0800 and 2000 hours in 100-mL polypropylene urine collection containers that were kept for a maximum of 20 h in a cold room (4°C) before being frozen at –20°C in 20-mL portions in 25-mL polypropylene vials. Measurements of six nonspecific DAP metabolites of OP pesticides were conducted at the Institut National de Santé Publique (INSPQ) in Quebec, Canada, using gas chromatography coupled with tandem mass spectrometry (GC–MS/MS) (Health Canada 2010). Three dimethyl (DM) metabolites [dimethylphosphate (DMP), dimethylthiophosphate (DMTP), and dimethyldithiophosphate (DMDTP)]

were determined, as well as three diethyl (DE) metabolites [diethylphosphate (DEP), diethylthiophosphate (DETP), and diethyldithiophosphate (DEDTP)]. The limit of detection (LOD) was 0.26 µg/L for DMP, 0.40 for DMTP, 0.09 for DMDTP, 0.50 for DEP, 0.12 for DETP, and 0.06 for DEDTP. Measured values below the LOD were included in the data analysis when available. The inter-day precision of the method during this project, expressed as the coefficient of variation, varied between 4.2 and 8.8 for DEDTP, 4.1 and 7.2 for DEP, 5.0 and 9.1 for DETP, 5.5 and 7.1 for DMDTP, 5.3 and 8.0 for DMP, and 5.5 and 7.7 for DMTP based on reference materials (clinical check-urine level II 637 E-495 and MRME-459).

Molar concentrations were used to facilitate comparison of our results with those from other studies, based on the following molecular weights: DMP 126.0, DMTP 142.1, DMDTP 158.2, DEP 154.1, DETP 170.2, and DEDTP 186.2 g/mol. To account for urinary dilution, creatinine concentrations were determined based on the Jaffe reaction (Butler 1975; O'Brien et al. 2016). The limit of detection for creatinine was 0.28 mmol/L, and the day-to-day coefficient of variation percent varied between 3.0 and 3.3.

Assessment of Child Nonverbal IQ at 6 y of Age

The children's nonverbal IQ was assessed by administering the Mosaics and Categories subtests from the Snijders-Oomen Nonverbal Intelligence Test–Revised, a well-validated instrument developed in Netherlands (Tellegen et al. 1998). These two language-independent subtests include items that probe visuospatial and abstract reasoning abilities and were selected because of the multiethnic composition of the Generation R Study. Raw scores were derived for each subtest and standardized to reflect a mean and standard deviation of the Dutch normative population for ages 2.5–7 y. The sum of the standardized scores of the two subtests was converted into the SON-R IQ score using age-specific reference scores provided in the SON-R 2½-7 manual (mean = 100, standard deviation = 15). These standardized scores, based on the two subtests, correlated well ($r = 0.86$) with those based on the complete instrument (Ghassabian et al. 2014).

Genetic Analyses

In total, 474 children in the study sample had genetic data available from cord blood. Genotyping was performed using Illumina 610K and 660W arrays. Quality control included filters for sample ($\geq 97.5\%$) and single nucleotide polymorphism (SNP) call rates ($\geq 95\%$), minor allele frequencies (MAF; $\geq 1\%$), and deviations from the Hardy-Weinberg equilibrium ($p \leq 10^{-7}$). We additionally checked heterozygosity, sex accuracy, and relatedness. From this data set we extracted information on rs705379 (PON1-108), rs705381 (PON161), rs854560 (PON1-L55M), rs854572 (PON1-909), and rs662 (PON1-Q192). Only the latter was directly genotyped, all others were imputed. We used Mach 1.0 (Li et al. 2010) to impute to the 1000 Genomes Iv3 reference panel (1000 Genomes Project Consortium et al. 2015). All four imputed SNPs had excellent imputation quality (all $R^2 > 0.95$) and high MAF (all MAF $> 26\%$). SNPs were included as allele dosages ranging from zero to two copies of the effects allele (Medina-Gomez et al. 2015). See Table S1 for effect allele and SNP descriptive statistics.

Additional Data Collection

Maternal reproductive, sociodemographic, and cognitive data were assessed by multiple questionnaires and instruments throughout the study. During pregnancy, data on maternal height and weight were collected as was information on maternal age, parity (0, 1, or ≥ 2),

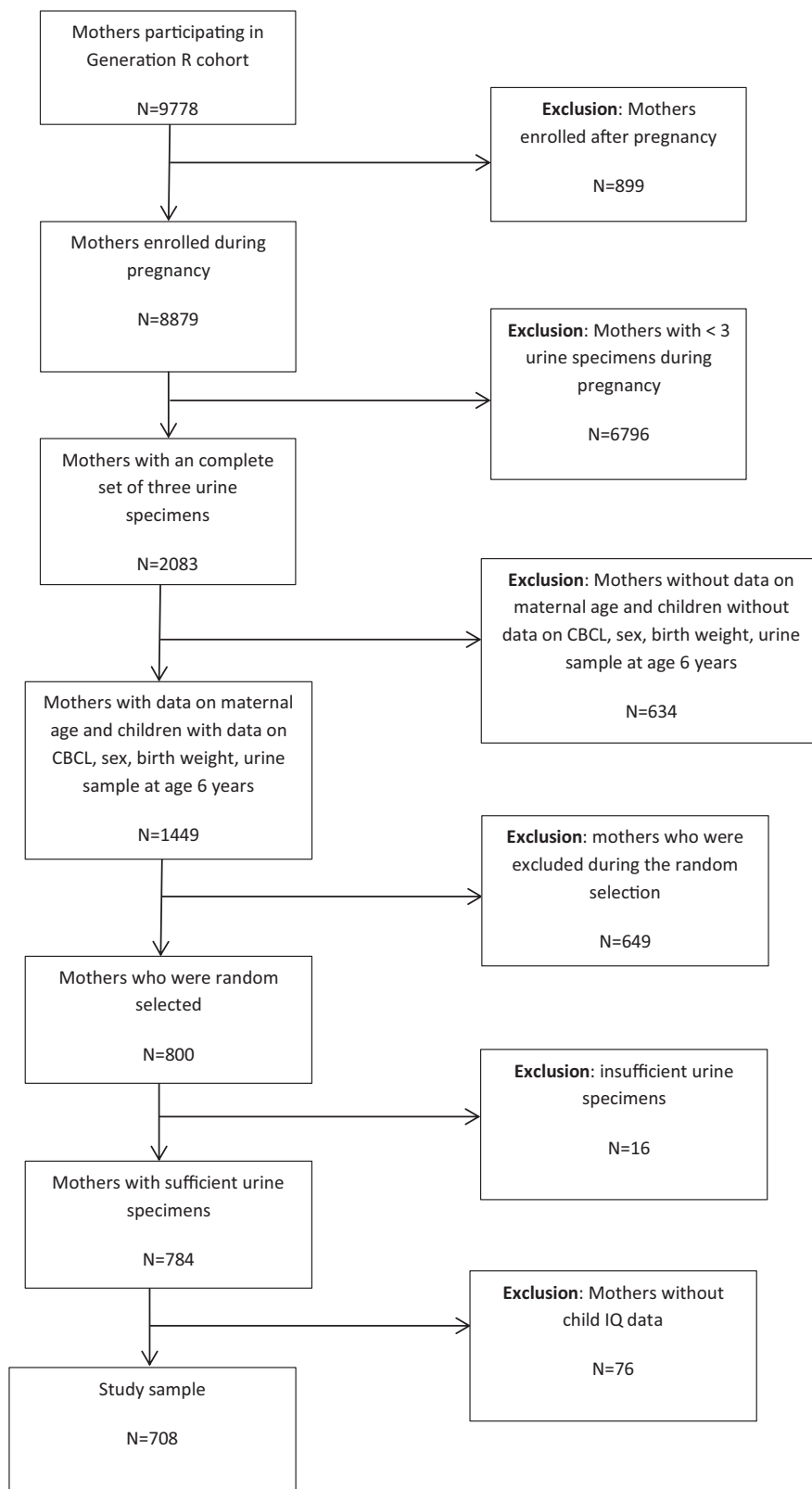


Figure 1. Study sample selection ($n = 708$) from the overall Generation R cohort ($n = 9,778$). Note: CBCL, Child Behavior Checklist.

smoking (no smoking during pregnancy, smoked until pregnancy was recognized, or continued smoking during pregnancy), alcohol intake during pregnancy [no alcohol consumption during pregnancy, alcohol consumption until pregnancy was recognized, continued occasionally (<1 glass/week), or continued frequently

(≥ 1 glass/week)], marital status (married/partner or single), household total net income [$<1,200$ euros per month (i.e., below the Dutch social security level), 1,200–2,000 euros per month, $>2,000$ euros per month, highest completed education level (low: <3 y at general secondary school; intermediate: ≥ 3 y of secondary

education; or high: university degree or higher vocational training), and ethnicity (Dutch national origin, other-Western, or non-Western)]. In addition, maternal dietary intake in the first trimester was assessed using a modified version of a validated semiquantitative food frequency questionnaire (FFQ), and the 293 food items were reduced to 24 predefined food groups (e.g., meat, grains, vegetables, fruits) according to the European Prospective Investigation into Cancer and Nutrition (EPIC)—soft classification, based on origin, culinary usage, and nutrient profiles (Steenweg-de Graaff et al. 2012; van den Dries et al. 2018).

An adapted Infant/Toddler Home Observation for Measurement of the Environment (IT-HOME) inventory (Caldwell and Bradley 1984) was administered during a home visit at approximately 3 months of age (SD = 1.17 months). The validated 29-item version of the IT-HOME was used to measure the events, objects, and social interactions experienced by the child in the family context (Rijlaarsdam et al. 2012). Higher scores on the IT-HOME indicate a more enriched environment.

Maternal nonverbal IQ was measured when mother–child pairs attended the 6-y examination, and was assessed using a computerized Raven’s Advanced Progressive Matrices Test, set I (Prieler 2003). The test is a 12-item reliable and validated short version of the Raven’s Progressive Matrices to assess nonverbal cognitive ability (Chiesi et al. 2012).

Statistical Methods

Exposure. The three DM metabolites (DMP, DMTP, and DMDTP) were summed as total DM (nmol/L) and the three DE metabolites (DEP, DETP, and DEDTP) were summed as total DE (nmol/L). Total DAP concentrations (nmol/L) were calculated by summing the six metabolites. Urinary concentrations were expressed on a volume and creatinine basis (nmol/g creatinine). Missing DAP metabolite values and missing covariate data were imputed (10 times) with the Multivariate Imputation by Chained Equation (MICE) method in R (version 3.2.3; R Development Core Team) (van Buuren and Groothuis-Oudshoorn 2011). DAP metabolite concentrations were \log_{10} transformed before running the multiple imputation (MI) procedure. Child nonverbal IQ was included as a predictor but was not imputed. Apart from household income (13%) and the IT-HOME score (29%), the percentage of missing values did not exceed 10% before imputation.

Statistical model. Initial exploratory data analyses suggested that the OP pesticide–nonverbal IQ associations were nonlinear in functional form and that multivariable models with \log_{10} -transformed exposure generally provided a better model fit than models with OP pesticide concentration untransformed (see Table S2). Thus, first, parametric models with DAP concentrations \log_{10} -transformed were fit to estimate the OP pesticide–nonverbal child IQ associations, and second, restricted cubic spline models were fit to describe the functional form of the exposure–outcome association utilizing the rms-package in R, which estimates a *p*-value for nonlinearity (i.e., statistically significant values indicate a departure from linearity) (Harrell 2018). These associations were graphically depicted by plots. In parametric models, nonverbal IQ associations for each urine collection phase (gestational age <18, 18–25, and >25 weeks) were modeled *a*) separately, *b*) as a single average of prenatal exposure, and *c*) for each urine collection phase modeled jointly (i.e., all three DAP concentrations included as three separate terms in each model). The first two regression models (model for each urine collection phase separately and the model for average prenatal exposure) consisted of an unadjusted model and an adjusted model. The third model consisted of a mutually adjusted model in which the three exposures from each time period were jointly estimated. The adjustment variables were

maternal age, ethnicity, education, income, marital status, alcohol consumption during pregnancy, nonverbal IQ, body mass index (BMI), height, parity, and smoking during pregnancy; child sex; and the IT-HOME score. Potential adjustment variables were selected *a priori* based on previous studies of OP pesticides and child cognition and on biologically plausible covariate–exposure and covariate–outcome associations observed in our data (Bouchard et al. 2011; Engel et al. 2007, 2011, 2016; Eskenazi et al. 2007, 2014; London et al. 2012; van den Dries et al. 2018). Finally, to investigate whether the association of DAP concentrations on child IQ differed according to *PON1* genotype, the interaction between DAP concentrations and *PON1* genotype was formally tested using an *a priori* criteria for interaction of *p* < 0.10. Genetic analyses were carried out in both the full sample and in the Dutch national origin sample.

Sensitivity analyses. First, values below the LOD were substituted with the LOD divided by the square root of 2, rather than the multiple imputation method in our primary analyses. The replacement of values below the LOD with the LOD divided by the square root of 2 is a common substitution method in environmental exposure studies (Baccarelli et al. 2005). Second, models were refit with metabolite concentrations expressed as nanomoles per liter with creatinine concentration added as a separate covariate (O’Brien et al. 2016; Schisterman et al. 2005). Third, models truncating the bottom and top 3% of exposure and child nonverbal IQ values were fit to test data robustness. Fourth, the primary models were adjusted for fruit and vegetable intake (van den Dries et al. 2018). Fifth, a multiple informants model was fit as an alternative strategy to model the OP pesticide concentrations collected at three points in time during pregnancy (Sánchez et al. 2011). Sixth, to examine potential selection effects by maternal education, interaction models to assess effect measure modification by maternal education were fit. Seventh, to examine potential sex-specific associations, OP pesticide × child sex interaction models were fit. Eighth, a “complete case” analysis of the data was conducted, utilizing only observations with complete data for all covariates. Ninth, summed models excluding DEDTP metabolites were fit because >80% of concentration values were <LOD. Last, each of the two subtests making up the child nonverbal IQ score (Mosaics and Categories) were modeled as the outcome of interest, in place of the nonverbal IQ score, to assess the specificity of results.

Results

Sample Characteristics

Overall, the Generation R Study mothers were on average 30 y of age at enrollment (SD 5 y), and diverse with respect to ethnicity, education, and income (Table 1). Compared with all women in the Generation R Study, the women in the present analysis were more likely to be older, nulliparous, Dutch, highly educated, married, and to occasionally consume alcoholic beverages during pregnancy. Women were also more likely to have a lower BMI and a higher income. Compared with all Generation R Study children who attended the 6-y examination, the IT-HOME scores of our sample were slightly higher.

The average DAP concentration in maternal pregnancy urine was higher among those who were older, had a lower BMI, higher income and education, and had partners (Table 1). Child DAP concentrations in urine were weakly associated with those in maternal pregnancy urine (*r* < |0.08|; see also Table S3). The child’s DAP concentrations were also slightly positively associated with the HOME scores (not shown). Child nonverbal IQ scores were most strongly related to maternal ethnicity, education, and income and to their HOME score (Table 1).

Table 1. Characteristics of all Generation R cohort members and of the participants included in the analysis, and average dialkylphosphates (DAP) concentration and nonverbal IQ score by category of characteristics.

Characteristic	Generation R cohort (%) ^a (n = 9,778)	Included in the analyses (%) ^a (n = 708)	Average DAP exposure [median (25th–75th percentile)] ^{b,c}	Child nonverbal IQ score [mean (SD)] ^c
Maternal and infant characteristics				
at time of enrollment				
Sex of infant at birth				
Male	50.6	51.3	378 (263–511)	103 (16)
Female	49.4	48.7	341 (248–480)	102 (14)
Missing (n)	153	—		
p-Value ^d			0.064	0.289
Age (y)				
<20	4.2	1.7	292 (229–477)	97 (15)
20 to < 25	15.9	10.2	332 (250–456)	91 (15)
25 to < 30	26.4	26.4	324 (245–476)	103 (15)
30 to < 35	36.9	45.8	382 (257–519)	104 (16)
≥35	16.6	16.0	384 (269–489)	104 (13)
Missing (n)	—	—		
p-Value ^d			0.076	<0.001
BMI (kg/m ²)				
<18.5	2.1	2.4	365 (281–563)	98 (21)
18.5 to < 25	57.9	65.4	378 (269–509)	103 (15)
25 to < 30	26.3	23.4	344 (257–460)	101 (15)
≥30	13.8	8.8	262 (196–427)	99 (15)
Missing (n)	899	3		
p-Value ^d			<0.001	0.047
Height in cm (quartiles)				
<161	23.6	16.4	343 (260–505)	97 (15)
161 to < 168	27.4	31.0	349 (245–490)	102 (15)
168 to < 173	24.6	25.3	343 (245–489)	103 (15)
≥173	24.4	27.3	370 (279–511)	105 (16)
Missing (n)	934	1		
p-Value ^d			0.709	<0.001
Parity (previous births)				
0	55.1	61.5	361 (258–502)	103 (16)
1	30.2	27.3	379 (271–502)	102 (15)
≥2	14.7	11.2	295 (216–429)	100 (14)
Missing (n)	378	4		
p-Value ^d			0.017	0.468
Ethnicity				
Dutch	50.0	57.9	370 (253–487)	106 (15)
Other-Western	11.6	12.4	365 (283–514)	101 (15)
Non-Western	38.4	29.7	335 (248–516)	96 (14)
Missing (n)	694	—		
p-Value ^d			0.587	<0.001
Education				
Low (no education finished, primary education, lower vocational training, intermediate general school or <3 y at general secondary school)	26.5	14.8	315 (215–459)	95 (16)
Intermediate (≥3 y of secondary education, intermediate vocational training or first year of higher vocational training)	30.7	30.0	331 (247–478)	100 (15)
High (university degree or higher vocational training)	42.8	55.2	384 (280–509)	106 (15)
Missing (n)	1,221	24		
p-Value ^d			<0.001	<0.001
Household income per month (euros)				
<1,200	20.7	12.6	312 (219–465)	96 (15)
1,200–2,000	18.5	17.0	320 (247–473)	101 (15)
>2,000	60.8	70.4	381 (278–501)	105 (15)
Missing (n)	3,066	90		
p-Value ^d			0.007	<0.001

Note: BMI, body mass index; DAP, dialkylphosphates; IT-HOME, Infant/Toddler Home Observation for Measurement of the Environment inventory; —, all dashes, except for those for the child DAP concentrations (as noted), mean “0” as in, no missing values.

^aValues presented are percentages of the study sample unless noted otherwise.

^bAverage DAP exposure represents the average exposure during pregnancy (measured at three time points) in nmol/g creatinine.

^cValues presented are based on the study sample (n = 708).

^dp-Value calculated with the use of Kruskal-Wallis test for differences in average DAP concentrations across pregnancy and nonverbal IQ scores by characteristic.

^eIT-HOME inventory is a 29-item validated measure of the events, objects, and social interactions experienced by a child in the family context. IT-HOME was assessed by observation during home visits at average child age of 3.38 months (SD = 1.17).

Table 1. (Continued.)

Characteristic	Generation R cohort (%) ^a (n = 9,778)	Included in the analyses (%) ^a (n = 708)	Average DAP exposure [median (25th–75th percentile)] ^{b,c}	Child nonverbal IQ score [mean (SD)] ^c
Marital status				
Married/living with partner	85.5	90.3	371 (267–504)	103 (15)
No partner	14.5	9.7	268 (210–415)	101 (16)
Missing (n)	1,213	29		
p-Value ^d			<0.001	0.211
Nonverbal IQ score				
≤85	16.0	18.5	321 (219–477)	96 (14)
>85 to ≤100	43.1	44.1	353 (263–507)	102 (15)
>100 to <115	16.7	19.1	373 (274–468)	105 (15)
≥115	14.1	18.4	382 (252–501)	107 (17)
Missing (n)	3,427	16		
p-Value ^d			0.263	<0.001
Smoking				
No smoking during pregnancy	73.4	78.1	375 (268–505)	103 (15)
Until pregnancy recognized	8.6	8.5	342 (258–500)	102 (13)
Continued during pregnancy	18.0	13.4	275 (186–469)	98 (14)
Missing (n)	1,534	61		
p-Value ^d			0.001	0.008
Alcohol beverage consumption				
No alcohol consumption during pregnancy	48.0	37.9	329 (246–485)	99 (15)
Until pregnancy recognized	13.2	17.3	377 (268–516)	104 (13)
Continued occasionally (<1 glass/week)	31.6	38.5	381 (257–509)	105 (16)
Continued frequently (≥1 glass/week for at least two trimesters)	7.2	6.4	349 (295–461)	106 (14)
Missing (n)	1,870	37		
p-Value ^d			0.285	<0.001
Child at 6 y of age				
Total DAP in nmol/g creatinine (quartiles)				
<144	—	24.6	341 (248–483)	100 (16)
144 to <240	—	24.9	332 (244–457)	103 (14)
240 to <410	—	25.4	377 (266–503)	102 (14)
≥410	—	25.1	380 (268–519)	104 (17)
Missing (n)	—	28		
p-Value ^d			0.152	0.140
Household income per month (euros)				
<1,600	16.5	15.0	320 (223–502)	96 (16)
1,600–4,000	49.2	47.0	344 (252–475)	101 (16)
>4,000	34.3	38.0	390 (287–529)	107 (14)
Missing (n)	3,953	40		
p-Value ^d			0.001	<0.001
Child's home environments				
IT-HOME score ^e (quartiles)				
<25	36.3	22.6	321 (224–469)	97 (16)
25 to <27	24.9	26.7	362 (258–505)	101 (15)
27 to >28	18.2	19.4	360 (264–491)	103 (14)
≥28	20.6	31.3	376 (269–516)	104 (16)
Missing (n)	5,301	203		
p-Value ^d			0.164	0.004

DAP Concentrations

Total DAPs comprised mostly dimethyl alkyl phosphates, and the distribution of concentrations was fairly stable across the three sampling periods (Figure 2). As reported previously, the intra-class correlation coefficient for total DAP concentration across the three phases of pregnancy urine collection in this study was 0.38 (Spaan et al. 2015).

DAP–IQ Associations

Overall, the estimated differences in child nonverbal IQ for a log₁₀-unit increase in OP pesticide concentration were inconsistent between adjacent sampling periods (Table 2). The heterogeneity in association across sampling periods was statistically significant for total DAPs and dimethyl alkyl phosphates. For each 10-fold

difference in total DAP concentration for the >25 weeks of gestation samples, however, adjusted child nonverbal IQ was 3.9 points lower [95% confidence interval (CI): –7.5, –0.3]. The results for dimethyl alkyl phosphate at >25 weeks of gestation showed inverse associations that were slightly stronger than for total DAPs or diethyl alkyl phosphates, but these estimates were essentially similar given the width of the 95% CIs for measures at >25 weeks. A representative spline (mean of 10 restricted spline smooths from the MICE models) for total DAP concentration at >25 weeks of gestation is shown in Figure 3 and indicates a slightly steeper and inverse association between exposure and outcome at lower levels of exposure, and the p value for nonlinearity was 0.11. Restricted cubic splines of all 12 exposure–nonverbal IQ associations were largely consistent with results from parametric models (see Figures S1–S3).

	%<LOD	GM	P05	P25	P50	P75	P95	0	1	10	100	1,000	10,000
DEDTP													
< 18 weeks' gestation	80.9%	0.2	0.0	0.0	0.0	0.3	0.9						
18 -25 weeks' gestation	83.9%	0.2	0.0	0.0	0.0	0.3	1.1						
>25 weeks' gestation	84.3%	0.2	0.0	0.0	0.0	0.3	0.9						
DETP													
< 18 weeks' gestation	12.3%	7.9	0.0	2.9	7.3	18.0	67.1						
18 -25 weeks' gestation	11.4%	7.5	0.3	2.8	7.0	16.2	51.4						
>25 weeks' gestation	11.2%	7.5	0.1	3.1	7.5	16.3	59.6						
DEP													
< 18 weeks' gestation	2.7%	32.9	7.2	18.4	32.7	56.5	128.0						
18 -25 weeks' gestation	5.2%	31.4	6.8	17.5	31.0	55.1	141.7						
>25 weeks' gestation	3.8%	31.4	7.4	16.6	31.9	57.0	138.1						
Diethyl alkyl phosphates^b													
< 18 weeks' gestation		43.7	9.6	25.3	43.4	79.2	178.0						
18 -25 weeks' gestation		41.8	9.0	23.3	41.5	76.2	187.0						
>25 weeks' gestation		41.6	8.9	21.9	42.1	77.4	182.3						
DMDTP													
< 18 weeks' gestation	19.6%	3.5	0.0	1.2	3.0	7.1	30.2						
18 -25 weeks' gestation	18.1%	3.8	0.0	1.4	3.3	7.6	29.2						
>25 weeks' gestation	17.4%	3.5	0.0	1.3	3.0	6.8	31.4						
DMTP													
< 18 weeks' gestation	3.5%	88.7	10.8	49.5	103.2	197.2	490.0						
18 -25 weeks' gestation	3.5%	98.1	12.1	63.4	111.1	205.0	458.3						
>25 weeks' gestation	2.3%	97.6	14.8	57.0	104.5	193.7	512.4						
DMP													
< 18 weeks' gestation	0.1%	132.4	38.9	81.7	131.1	216.9	443.8						
18 -25 weeks' gestation	-	138.3	45.0	92.3	138.2	215.5	369.7						
>25 weeks' gestation	-	128.1	38.1	82.1	129.8	198.8	403.7						
Dimethyl alkyl phosphates^c													
< 18 weeks' gestation		254.3	72.0	151.3	249.1	419.1	871.8						
18 -25 weeks' gestation		268.2	81.1	170.8	269.1	422.6	857.0						
>25 weeks' gestation		251.9	70.3	163.0	252.6	403.5	882.2						
Total Dialkyl phosphates^d													
< 18 weeks' gestation		313.8	97.3	191.6	316.0	520.0	1002.9						
18 -25 weeks' gestation		322.6	101.2	211.1	316.7	491.9	1001.9						
>25 weeks' gestation		307.3	90.2	195.9	310.0	498.5	994.4						

- a. Statistics computed using reported values below limit of detection. The boxplots represent the 25th, 50th, and 75th percentiles (box, left to right) and the whiskers are equal to 1.5 times the interquartile range. Dots beyond the whiskers represent those values more than 1.5 times the interquartile range.
- b. Diethyl alkyl phosphates is the sum of DEDTP, DETP and DEP.
- c. Dimethyl alkyl phosphates is the sum of DMDTP, DMTP and DMP.
- d. Total Dialkyl phosphates is the sum of DEDTP, DETP, DEP, DMDTP, DMTP and DMP.

Figure 2. Dialkylphosphate concentrations on a creatinine basis in maternal urine among Generation R participants included in analyses ($n = 708$). Statistics were computed using reported values below the limit of detection. The outer limits of the boxes (left to right) represent the 25th and 75th percentiles; the vertical bars within the boxes represent the 50th percentiles. The whiskers indicate 1.5 times the interquartile range (IQR), and the values more than 1.5 times the IQR are represented as points. Diethyl alkyl phosphates is the sum of DEDTP, DETP, and DEP. Dimethyl alkyl phosphates is the sum of DMDTP, DMTP, and DMP. Total dialkylphosphates is the sum of DEDTP, DETP, DEP, DMDTP, DMTP, and DMP. Note: DEDTP, diethyldithiophosphate; DEP, diethylphosphate; DETP, diethylthiophosphate; DMDTP, dimethyldithiophosphate; DMP, dimethylphosphate; DMTP, dimethylthiophosphate.

The results among the subset of mother–child pairs with child data on genotype showed that there was no strong statistical support for heterogeneity in the nonverbal child IQ–DAP association by genotype, particularly considering the number of comparisons made (see Tables S4–S11). When the genetic analysis was restricted to Dutch national origin participants, the findings were again unremarkable (see Tables S12–S15).

Sensitivity Analyses

As noted above, the sensitivity analyses examined the effects of *a*) the <LOD substitution method (see Table S16), *b*) adjustment of creatinine concentration as a separate covariate (see Table S17), *c*) the removal of extreme exposure and outcome values (see Table S18), *d*) adjustment for prenatal fruit and vegetable consumption (see Table S19), *e*) analyzing the data using a multiple informants model (see Table S20), *f*) examining effect

measure modification by maternal educational attainment (see Table S21), *g*) examining effect measure modification by child sex (see Table S22), *h*) fitting a “complete case” only model (see Table S23–S24), and *i*) excluding DEDTP (i.e., including only those metabolites with at least 80% of values >LOD) (see Table S25). Finally, Mosaics (see Table S26) and Categories (see Table S27) were modeled as the outcome of interest in place of nonverbal IQ. The sensitivity analyses supported the results shown in Table 2 and the absence of important differences when examining effect measure modification. However, with adjustment for fruit and vegetable intake, the associations tended to be more inverse.

Discussion

In this analysis of data on nonverbal IQ in children in relation to prenatal DAP concentrations in a diverse, urban population in Europe, evidence of an adverse association was weak overall,

Table 2. Difference in cognitive test score at 6 y of age (and 95% confidence interval) per log₁₀ nanomoles per gram creatinine increase in maternal urine dialkylphosphate metabolite concentration, by timing of pregnancy urine sampling and degree of adjustment (*n* = 708).

Dialkylphosphate type	Not adjusted		Adjusted ^a		Mutually adjusted ^b	
	β	(95% CI)	β	(95% CI)	β	(95% CI)
Dialkylphosphates (total) ^c						
<18 weeks of gestation	-0.7	-4.1, 2.8	-1.9	-5.3, 1.5	-1.8	-5.3, 1.6
18–25 weeks of gestation	3.2	-0.6, 7.0	0.9	-2.9, 4.7	2.6	-1.4, 6.6
>25 weeks of gestation	-0.8	-4.4, 2.8	-3.9	-7.5, -0.3	-4.3	-8.1, -0.6
Mean of three urines	0.6	-4.3, 5.5	-2.5	-7.4, 2.4	—	—
<i>p</i> Homogeneity ^d						0.051
Diethyl alkyl phosphates ^e						
<18 weeks of gestation	0.1	-2.4, 2.6	-1.4	-3.8, 1.1	-1.5	-4.0, 1.0
18–25 weeks of gestation	2.1	-0.4, 4.7	0.6	-1.9, 3.1	0.9	-1.7, 3.5
>25 weeks of gestation	2.2	-0.3, 4.7	-0.2	-2.8, 2.3	-0.3	-2.9, 2.3
Mean of three urines	4.4	0.6, 8.2	1.0	-2.8, 4.9	—	—
<i>p</i> Homogeneity ^d						0.475
Dimethyl alkyl phosphates ^f						
<18 weeks of gestation	-1.6	-4.9, 1.7	-2.5	-5.7, 0.7	-2.3	-5.6, 0.9
18–25 weeks of gestation	2.6	-1.0, 6.3	0.7	-3.0, 4.3	2.3	-1.4, 6.1
>25 weeks of gestation	-1.6	-5.0, 1.9	-4.1	-7.5, -0.7	-4.3	-7.9, -0.8
Mean of three urines	-0.6	-5.4, 4.1	-3.0	-7.7, 1.7	—	—
<i>p</i> Homogeneity ^d						0.030

Note: BMI, body mass index; CI, confidence interval; DEDTP, diethyldithiophosphate; DEP, diethylphosphate; DETP, diethylthiophosphate; DMDTP, dimethyldithiophosphate; DMP, dimethylphosphate; DMTP, dimethylthiophosphate; IT-HOME, Infant/Toddler Home Observation for Measurement of the Environment inventory; —, not applicable.

^aAdjusted for age of the mother, sex of child, ethnicity categories (Dutch, other-Western, and non-Western), education (low, intermediate, and high), income (low, middle, and high), marital status, maternal alcohol consumption (no alcohol consumption during pregnancy, alcohol consumption until pregnancy was known, occasional alcohol consumption during pregnancy, and frequent alcohol consumption during pregnancy), maternal nonverbal IQ, BMI categories (<18.5, 18.5–25, 25–30, >30 kg/m²), height of the mother, parity categories (0, 1, ≥2), IT-HOME quartiles, and smoking categories (no smoking during pregnancy, smoked until pregnancy was known, smoked during pregnancy).

^bAdjusted model with the inclusion of the three exposures in one model.

^cTotal dialkylphosphates is the sum of DEDTP, DETP, DEP, DMDTP, DMTP, and DMP.

^dMultiple-partial *F*-test used to test whether exposure from different time points relates in the same manner to nonverbal IQ scores.

^eDiethyl alkyl phosphates is the sum of DEDTP, DETP, and DEP.

^fDimethyl alkyl phosphates is the sum of DMDTP, DMTP, and DMP.

although there was some suggestion of an inverse relation between nonverbal IQ and late pregnancy urinary DAP concentration. Among the three groups of DAP metabolites analyzed, diethyl metabolites showed the weakest associations with child nonverbal IQ. Where inverse associations were suggested, the adjusted results were generally more strongly inverse than the crude results, consistent with negative confounding.

The results of our study share some consistencies with other published data. For example, in a pooled analysis of data on developmental indices at 2 y of age and DAPs measured in one or two prenatal urine specimens, there was a negative association at lower, as opposed to higher, concentrations of DAPs in three of the four pooled studies (with the fourth study showing linearity throughout the range of exposure), a finding similar to the pattern observed in our data (Figure 3) (Engel et al. 2016). A larger negative association at lower concentrations was also present in Bouchard's study with IQ measured at 7 y of age (Bouchard et al. 2011). In that analysis of 7-y-old children from the CHAMACOS cohort, each 10-fold difference in total DAP concentration—in the second half of pregnancy—was associated with a 3.5-point lower Weschler Intelligence Scale for Children (WISC)-IV Full-Scale IQ score and a 3.1-point lower Verbal Comprehension score (Bouchard et al. 2011). Results from the present study are similar: Each 10-fold difference in total DAP concentration measured at >25 weeks was associated with a 3.9-point lower nonverbal IQ score. Results of our restricted cubic spline models illustrate that associations between DAPs and nonverbal IQ may be stronger at lower levels of exposure. There is evidence from animal and human studies that exposure–disease associations may not be linear (Calabrese and Baldwin 2001). For instance, studies of lead exposure and child IQ have observed nonlinearity in the lead–IQ association across different persons, places, and times (Bellinger and Needleman 2003; Canfield et al. 2003; Jusko et al. 2008; Lanphear et al. 2005). For organophosphate pesticides, low-dose developmen-

tal toxicity may occur through noncholinergic mechanisms (Flaskos 2014; Terry 2012), which may have nonlinear dose–effect modes of action.

The timing of the DAP exposure assessment may explain differences across studies. Bouchard et al. (2011) examined child IQ at 7 y of age in relation to urinary DAPs from either the first or second half of pregnancy; the DAP–IQ coefficient was negative for both periods, but more so for the DAPs in the second half of pregnancy. Our results also showed a larger negative association later in pregnancy. Other factors may also explain variation in the results across studies (Engel et al. 2016). For example, variation across studies in the degree of confounding by fruit and vegetable intake, or the degree to which urine DAP metabolites concentrations reflect exposure to the active pesticide rather than degradation products, especially in regions where a larger proportion of measured DAP concentrations is due to agricultural pesticide exposure (Gunier et al. 2017) may explain differences across studies. Other potential reasons for variation may be in the types of pesticides used on food consumed in different countries or in the socioeconomic status (SES) of the studied populations. The authors of two recent studies of organophosphate pesticide metabolites and IQ speculated that a reason for the lack of association in higher SES populations was due to the protective effects of higher SES (Cartier et al. 2016; Donauer et al. 2016). In the present data, adjusted results were more inverse than the crude results, consistent with the possibility of residual confounding by SES or other lifestyle factors. Additionally, the instruments used to measure IQ differed across studies. The present study utilized a global, nonverbal measure of intelligence. Other studies utilized more complete IQ batteries such as the WISC that may be more sensitive to cognitive deficits because the instrument measures both verbal and nonverbal domains of intellectual function. For instance, in the CHAMACOS cohort, total DAP concentrations were associated with lower scores on the Verbal Comprehension Index, but scores on the Perceptual Reasoning and Processing

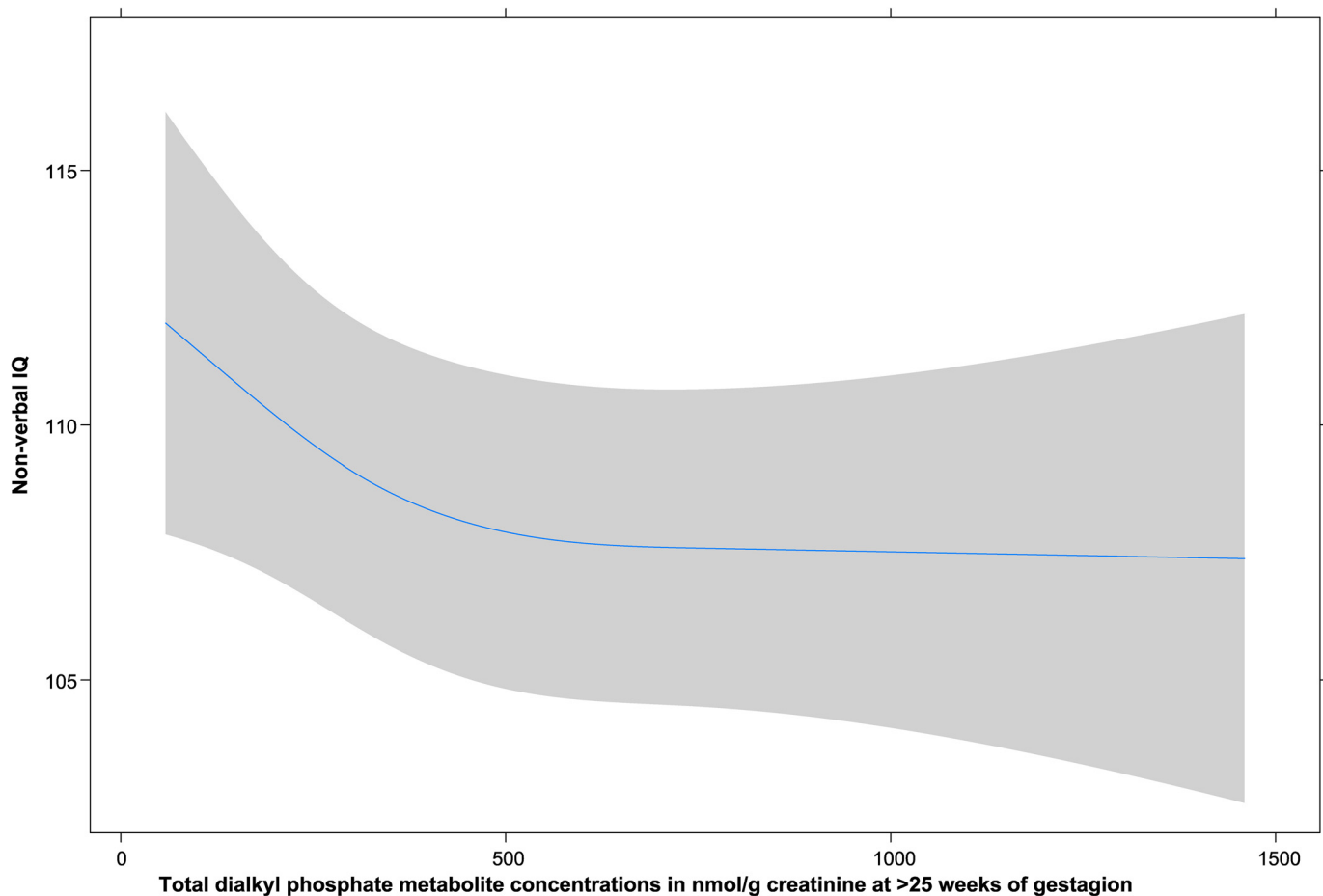


Figure 3. Restricted cubic spline of adjusted child nonverbal IQ scores and (untransformed) total DAP concentration. The solid line represents the estimated mean value of nonverbal IQ scores at each total DAP metabolite concentration, and the shaded area indicates the corresponding 95% confidence band for these estimates. Adjusted for age of the mother, sex of child, ethnicity categories (Dutch, other-Western, and non-Western), education (low, intermediate, and high), income (low, middle, and high), marital status, maternal alcohol consumption (no alcohol consumption during pregnancy, alcohol consumption until pregnancy was known, occasional alcohol consumption during pregnancy, and frequent alcohol consumption during pregnancy), maternal nonverbal IQ, BMI categories (<18.5, 18.5–25, 25–30, >30 kg/m²), height of the mother, parity categories (0, 1, ≥2), IT-Home quartiles, and smoking categories (no smoking during pregnancy, smoked until pregnancy was known, smoked during pregnancy). Note: BMI, body mass index; DAP, dialkylphosphates; IT-HOME, Infant/Toddler Home Observation for Measurement of the Environment inventory.

Speed indices of the WISC-IV were less strongly associated with DAP concentrations, if at all (Eskenazi et al. 2014).

In the present study, we did not observe any evidence of effect measure modification by the *PON1* gene allele. When we restricted the total sample to only those of Dutch national origin, results also did not show evidence of interaction by *PON1* genotype status. In other studies of effect measure modification by genotype, the results on cognitive measures and DAPs have been inconsistent (Engel et al. 2011; Eskenazi et al. 2014). For example, Eskenazi et al. (2014) observed that the association between DAPs and Mental Development Index scores was the strongest in children with *PON1*-108T allele, but this and other interactions between DAPs and *PON1* polymorphisms or enzymes were not statistically significant. On the other hand, Engel et al. (2011) observed a statistically significant interaction ($p=0.09$), showing a stronger inverse association between \log_{10} -DAP exposure and perceptual reasoning in children with the *PON1*92QQ allele. Results based on mother and child genotypes tended to be similar within a given study (Engel et al. 2011; Eskenazi et al. 2014).

The concentration of DAPs in urine only captures short-term exposure, which varies substantially from day to day, depending on diet. Although DAPs were measured at three time points, the average exposure may not have been accurately

captured (Perrier et al. 2016). Furthermore, the proportion of the DAPs measured that reflected exposure to the active pesticide rather than to inactive degradation products was unknown. The rate of degradation of organophosphate pesticides under specific field conditions is hard to predict (Fenner et al. 2013). As noted above, the SES of the Generation R population in the present study was higher than for the Generation R cohort as a whole, which may be a reflection of our exclusion criterion of having three urine specimens during pregnancy. Our results therefore may not be generalizable to the Generation R population; however, as noted above, we saw no evidence of effect measure modification by education, suggesting that potential selection bias is unlikely to have materially affected our results. Among the strengths of our study were the relatively large size, the measurement of maternal DAPs at three time points during pregnancy, and a well-standardized and validated instrument for measuring outcome. Furthermore, as documented elsewhere, the median total DAPs among the Generation R Study mothers was more than 2-fold higher compared with background-exposed pregnant women in the United States living in nonagricultural communities, which suggests a greater range of exposure and statistical power with which to evaluate exposure–disease associations (Ye et al. 2008).

Conclusions

Organophosphate pesticide exposure is ubiquitous, and experimental data and evidence from accidental poisoning in humans indicate that it is neurotoxic. The present study, utilizing a well-characterized pregnancy cohort in Rotterdam, Netherlands, examined maternal organophosphate exposure in 708 pregnant women in relation to child nonverbal IQ at 6 y of age. OP pesticide exposure was characterized by six measured dialkylphosphate metabolite concentrations in pregnancy urine specimens at three time points, and child nonverbal IQ was assessed at 6 y of age, after school entry, when IQ tests tend to have greater predictive validity for aspects of learning such as school achievement (Sattler 2008). Our results suggest that typical, background OP exposures during pregnancy are not consistently associated with lower child IQ at 6 y of age in this population; however, there was some evidence that late pregnancy may be a susceptible period for adverse effects on cognition.

Acknowledgments

The authors thank F. Pierik for laying the groundwork for the National Institute of Environmental Health Sciences–Netherlands Organisation for Applied Scientific Research (NIEHS-TNO)-Erasmus University collaboration and R. Hauser for alerting M.P.L. to the possibility of this project. The Generation R Study is conducted by the Erasmus Medical Center, Rotterdam in close collaboration with the School of Law and Faculty of Social Sciences of the Erasmus University, Rotterdam, the Municipal Health Service, Rotterdam Homecare Foundation, and Stichting Trombosedienst & Artsenlaboratorium Rijnmond. The authors are thankful for the contribution of participating parents and their children, general practitioners, hospitals, midwives, and pharmacies. The authors also thank A. Neumann for providing detailed information concerning genotyping and N. Russo for assistance with manuscript preparation.

This research received support from National Institutes of Health (NIH) grants K12 ES019852, P30 ES001247, and the intramural research program of the NIEHS/NIH. M.G. is funded by a Miguel Servet fellowship (MS13/00054) awarded by the Spanish Institute of Health Carlos III (Ministry of Economy and Competitiveness). ISGlobal is a member of the CERCA Programme, Generalitat de Catalunya.

References

- 1000 Genomes Project Consortium, Auton A, Brooks LD, Durbin RM, Garrison EP, Kang HM, et al. 2015. A global reference for human genetic variation. *Nature* 526(7571):68–74, PMID: 26432245, <https://doi.org/10.1038/nature15393>.
- Baccarelli A, Pfeiffer R, Consonni D, Pesatori AC, Bonzini M, Patterson DG Jr, et al. 2005. Handling of dioxin measurement data in the presence of non-detectable values: overview of available methods and their application in the Seveso chloracne study. *Chemosphere* 60(7):898–906, PMID: 15992596, <https://doi.org/10.1016/j.chemosphere.2005.01.055>.
- Bellinger DC, Needleman HL. 2003. Intellectual impairment and blood lead levels. *N Engl J Med* 349(5):500–502, PMID: 12890850, <https://doi.org/10.1056/NEJM200307313490515>.
- Bouchard MF, Chevrier J, Harley KG, Kogut K, Vedar M, Calderon N, et al. 2011. Prenatal exposure to organophosphate pesticides and IQ in 7-year-old children. *Environ Health Perspect* 119(8):1189–1195, PMID: 21507776, <https://doi.org/10.1289/ehp.1003185>.
- Bravo R, Driskell WJ, Whitehead RD Jr, Needham LL, Barr DB. 2002. Quantitation of dialkyl phosphate metabolites of organophosphate pesticides in human urine using GC-MS-MS with isotopic internal standards. *J Anal Toxicol* 26(5):245–252, PMID: 12166810, <https://doi.org/10.1093/jat/26.5.245>.
- Burke RD, Todd SW, Lumsden E, Mullins RJ, Mamczarz J, Fawcett WP, et al. 2017. Developmental neurotoxicity of the organophosphorus insecticide chlorpyrifos: from clinical findings to preclinical models and potential mechanisms. *J Neurochem* 142 (suppl 2):162–177, PMID: 28791702, <https://doi.org/10.1111/jnc.14077>.
- Butler AR. 1975. The Jaffé reaction. Part II. A kinetic study of the Janovsky complexes formed from creatinine (2-imino-1-methylimidazolidin-4-one) and acetone. *J Chem Soc Perkin Trans 2* 0:853–857, <https://doi.org/10.1039/P29750000853>.
- Calabrese EJ, Baldwin LA. 2001. The frequency of U-shaped dose responses in the toxicological literature. *Toxicol Sci* 62(2):330–338, PMID: 11452146, <https://doi.org/10.1093/toxsci/62.2.330>.
- Caldwell BM, Bradley RH. 1984. *Home Observation for Measurement of the Environment*. Little Rock, AR:University of Arkansas at Little Rock.
- Canfield RL, Henderson CR Jr, Cory-Slechta DA, Cox C, Jusko TA, Lanphear BP. 2003. Intellectual impairment in children with blood lead concentrations below 10 µg per deciliter. *N Engl J Med* 348(16):1517–1526, PMID: 12700371, <https://doi.org/10.1056/NEJMoa022848>.
- Cartier C, Warembourg C, Le Maner-Idrissi G, Lacroix A, Rouget F, Monfort C, et al. 2016. Organophosphate insecticide metabolites in prenatal and childhood urine samples and intelligence scores at 6 years of age: results from the mother-child PELAGIE cohort (France). *Environ Health Perspect* 124(5):674–680, PMID: 26394442, <https://doi.org/10.1289/ehp.1409472>.
- CDC (Centers for Disease Control and Prevention). 2009. *Fourth National Report on Human Exposure to Environmental Chemicals*. Atlanta, GA: CDC.
- Chiesi F, Ciancaleoni M, Galli S, Primi C. 2012. Using the Advanced Progressive Matrices (Set I) to assess fluid ability in a short time frame: an item response theory-based analysis. *Psychol Assess* 24(4):892–900, PMID: 22449036, <https://doi.org/10.1037/a0027830>.
- Donauer S, Altaye M, Xu Y, Sucharew H, Succop P, Calafat AM, et al. 2016. An observational study to evaluate associations between low-level gestational exposure to organophosphate pesticides and cognition during early childhood. *Am J Epidemiol* 184(5):410–418, PMID: 27539379, <https://doi.org/10.1093/aje/kwv447>.
- Eaton DL, Daroff RB, Autrup H, Bridges J, Buffler P, Costa LG, et al. 2008. Review of the toxicology of chlorpyrifos with an emphasis on human exposure and neurodevelopment. *Crit Rev Toxicol* 38 (suppl 2):1–125, PMID: 18726789, <https://doi.org/10.1080/10408440802272158>.
- Engel SM, Berkowitz GS, Barr DB, Teitelbaum SL, Siskind J, Meisel SJ, et al. 2007. Prenatal organophosphate metabolite and organochlorine levels and performance on the Brazelton Neonatal Behavioral Assessment Scale in a multiethnic pregnancy cohort. *Am J Epidemiol* 165(12):1397–1404, PMID: 17406008, <https://doi.org/10.1093/aje/kwm029>.
- Engel SM, Bradman A, Wolff MS, Rauh VA, Harley KG, Yang JH, et al. 2016. Prenatal organophosphorus pesticide exposure and child neurodevelopment at 24 months: an analysis of four birth cohorts. *Environ Health Perspect* 124(6):822–830, PMID: 26418669, <https://doi.org/10.1289/ehp.1409474>.
- Engel SM, Wetmur J, Chen J, Zhu C, Barr DB, Canfield RL, et al. 2011. Prenatal exposure to organophosphates, paraoxonase 1, and cognitive development in childhood. *Environ Health Perspect* 119(8):1182–1188, PMID: 21507778, <https://doi.org/10.1289/ehp.1003183>.
- Eskenazi B, Bradman A, Castorina R. 1999. Exposures of children to organophosphate pesticides and their potential adverse health effects. *Environ Health Perspect* 107 (suppl 3):409–419, PMID: 10346990, <https://doi.org/10.1289/ehp.99107s3409>.
- Eskenazi B, Kogut K, Huen K, Harley KG, Bouchard M, Bradman A, et al. 2014. Organophosphate pesticide exposure, PON1, and neurodevelopment in school-age children from the CHAMACOS study. *Environ Res* 134:149–157, PMID: 25171140, <https://doi.org/10.1016/j.envres.2014.07.001>.
- Eskenazi B, Marks AR, Bradman A, Harley K, Barr DB, Johnson C, et al. 2007. Organophosphate pesticide exposure and neurodevelopment in young Mexican-American children. *Environ Health Perspect* 115(5):792–798, PMID: 17520070, <https://doi.org/10.1289/ehp.9828>.
- Fenner K, Canonica S, Wackett LP, Elsner M. 2013. Evaluating pesticide degradation in the environment: blind spots and emerging opportunities. *Science* 341(6147):752–758, PMID: 23950532, <https://doi.org/10.1126/science.1236281>.
- Flaskos J. 2014. The neuronal cytoskeleton as a potential target in the developmental neurotoxicity of organophosphorothionate insecticides. *Basic Clin Pharmacol Toxicol* 115(2):201–208, PMID: 24476507, <https://doi.org/10.1111/bcpt.12204>.
- Ghassabian A, El Marroun H, Peeters RP, Jaddoe VW, Hofman A, Verhulst FC, et al. 2014. Downstream effects of maternal hypothyroxinemia in early pregnancy: nonverbal IQ and brain morphology in school-age children. *J Clin Endocrinol Metab* 99(7):2383–2390, PMID: 24684462, <https://doi.org/10.1210/jc.2013-4281>.
- Gunier RB, Bradman A, Harley KG, Kogut K, Eskenazi B. 2017. Prenatal residential proximity to agricultural pesticide use and IQ in 7-year-old children. *Environ Health Perspect* 125(5):057002, PMID: 28557711, <https://doi.org/10.1289/EHP504>.
- Harrell FE. 2018. rms: regression modeling strategies. R package version 5.1-2. <https://CRAN.R-project.org/package=rms> [accessed 25 May 2018].
- Health Canada. 2010. *Report on Human Biomonitoring of Environmental Chemicals in Canada: Results of the Canadian Health Measures Survey Cycle 1 (2007–2009)*. Ottawa, Ontario, Canada: Government of Canada.
- Huen K, Harley K, Bradman A, Eskenazi B, Holland N. 2010. Longitudinal changes in PON1 enzymatic activities in Mexican-American mothers and children with

- different genotypes and haplotypes. *Toxicol Appl Pharmacol* 244(2):181–189, PMID: 20045427, <https://doi.org/10.1016/j.taap.2009.12.031>.
- Jusko TA, Henderson CR, Lanphear BP, Cory-Slechta DA, Parsons PJ, Canfield RL. 2008. Blood lead concentrations < 10 µg/dL and child intelligence at 6 years of age. *Environ Health Perspect* 116(2):243–248, PMID: 18288325, <https://doi.org/10.1289/ehp.10424>.
- Kooijman MN, Kruihof CJ, van Duijn CM, Duijts L, Franco OH, van Ijzendoorn MH, et al. 2016. The Generation R Study: design and cohort update 2017. *Eur J Epidemiol* 31(12):1243–1264, PMID: 28070760, <https://doi.org/10.1007/s10654-016-0224-9>.
- Kruihof CJ, Kooijman MN, van Duijn CM, Franco OH, de Jongste JC, Klaver CC, et al. 2014. The Generation R Study: Biobank update 2015. *Eur J Epidemiol* 29(12):911–927, PMID: 25527369, <https://doi.org/10.1007/s10654-014-9980-6>.
- Lanphear BP, Hornung R, Khoury J, Yolton K, Baghurst P, Bellinger DC, et al. 2005. Low-level environmental lead exposure and children's intellectual function: an international pooled analysis. *Environ Health Perspect* 113(7):894–899, PMID: 16002379, <https://doi.org/10.1289/ehp.7688>.
- Li Y, Willer CJ, Ding J, Scheet P, Abecasis GR. 2010. MaCH: using sequence and genotype data to estimate haplotypes and unobserved genotypes. *Genet Epidemiol* 34(8):816–834, PMID: 21058334, <https://doi.org/10.1002/gepi.20533>.
- Llop S, Murcia M, Iñiguez C, Roca M, González L, Yusà V, et al. 2017. Distributions and determinants of urinary biomarkers of organophosphate pesticide exposure in a prospective Spanish birth cohort study. *Environ Health* 16(1):46, PMID: 28514952, <https://doi.org/10.1186/s12940-017-0255-z>.
- London L, Beseler C, Bouchard MF, Bellinger DC, Colosio C, Grandjean P, et al. 2012. Neurobehavioral and neurodevelopmental effects of pesticide exposures. *Neurotoxicology* 33(4):887–896, PMID: 22269431, <https://doi.org/10.1016/j.neuro.2012.01.004>.
- Medina-Gomez C, Felix JF, Estrada K, Peters MJ, Herrera L, Kruihof CJ, et al. 2015. Challenges in conducting genome-wide association studies in highly admixed multi-ethnic populations: the Generation R Study. *Eur J Epidemiol* 30(4):317–330, PMID: 25762173, <https://doi.org/10.1007/s10654-015-9998-4>.
- O'Brien KM, Upson K, Cook NR, Weinberg CR. 2016. Environmental chemicals in urine and blood: improving methods for creatinine and lipid adjustment. *Environ Health Perspect* 124(2):220–227, PMID: 26219104, <https://doi.org/10.1289/ehp.1509693>.
- O'Malley M. 1997. Clinical evaluation of pesticide exposure and poisonings. *Lancet* 349(9059):1161–1166, PMID: 9113024, [https://doi.org/10.1016/S0140-6736\(96\)07222-4](https://doi.org/10.1016/S0140-6736(96)07222-4).
- Perrier F, Giorgis-Allemand L, Slama R, Philippat C. 2016. Within-subject pooling of biological samples to reduce exposure misclassification in biomarker-based studies. *Epidemiology* 27(3):378–388, PMID: 27035688, <https://doi.org/10.1097/EDE.0000000000000460>.
- Prieler J. 2003. *Raven's Advanced Progressive Matrices*. Mödling, Austria:Schufried.
- Rijlaarsdam J, Stevens GW, van der Ende J, Arends LR, Hofman A, Jaddoe VW, et al. 2012. A brief observational instrument for the assessment of infant home environment: development and psychometric testing. *Int J Methods Psychiatr Res* 21(3):195–204, PMID: 22836590, <https://doi.org/10.1002/mpr.1361>.
- Sánchez BN, Hu H, Litman HJ, Téllez-Rojo MM. 2011. Statistical methods to study timing of vulnerability with sparsely sampled data on environmental toxicants. *Environ Health Perspect* 119(3):409–415, PMID: 21362588, <https://doi.org/10.1289/ehp.1002453>.
- Sattler JM. 2008. *Assessment of Children: Cognitive Foundations*. 5th ed. San Diego:Sattler.
- Schisterman EF, Whitcomb BW, Louis GM, Louis TA. 2005. Lipid adjustment in the analysis of environmental contaminants and human health risks. *Environ Health Perspect* 113(7):853–857, PMID: 16002372, <https://doi.org/10.1289/ehp.7640>.
- Sokoloff K, Fraser W, Arbuckle TE, Fisher M, Gaudreau E, LeBlanc A, et al. 2016. Determinants of urinary concentrations of dialkyl phosphates among pregnant women in Canada—results from the MIREC study. *Environ Int* 94:133–140, PMID: 27243443, <https://doi.org/10.1016/j.envint.2016.05.015>.
- Spaan S, Pronk A, Koch HM, Jusko TA, Jaddoe VW, Shaw PA, et al. 2015. Reliability of concentrations of organophosphate pesticide metabolites in serial urine specimens from pregnancy in the Generation R Study. *J Expo Sci Environ Epidemiol* 25(3):286–294, PMID: 25515376, <https://doi.org/10.1038/jes.2014.81>.
- Steenweg-de Graaff J, Roza SJ, Steegers EA, Hofman A, Verhulst FC, Jaddoe VW, et al. 2012. Maternal folate status in early pregnancy and child emotional and behavioral problems: the Generation R Study. *Am J Clin Nutr* 95(6):1413–1421, PMID: 22572645, <https://doi.org/10.3945/ajcn.111.030791>.
- Tellegen PJ, Winkel M, Wijnberg-Williams BJ, Laros JA. 1998. "Snijders-Oomen Nonverbal Intelligence Test. SON-R 2½-7 Manual and Research Report." Lisse, Netherlands: Swets & Zeitlinger B.V.
- Terry AV Jr. 2012. Functional consequences of repeated organophosphate exposure: potential non-cholinergic mechanisms. *Pharmacol Ther* 134(3):355–365, PMID: 22465060, <https://doi.org/10.1016/j.pharmthera.2012.03.001>.
- van Buuren S, Groothuis-Oudshoorn K. 2011. mice: multivariate imputation by chained equations in R. *J Stat Softw* 45(3):1–67, <https://doi.org/10.18637/jss.v045.i03>.
- van den Dries MA, Pronk A, Guxens M, Spaan S, Voortman T, Jaddoe VW, et al. 2018. Determinants of organophosphate pesticide exposure in pregnant women: a population-based cohort study in the Netherlands. *Int J Hyg Environ Health* 221(3):489–501, PMID: 29499913, <https://doi.org/10.1016/j.ijheh.2018.01.013>.
- Ye X, Pierik FH, Hauser R, Duty S, Angerer J, Park MM, et al. 2008. Urinary metabolite concentrations of organophosphorus pesticides, bisphenol A, and phthalates among pregnant women in Rotterdam, the Netherlands: the Generation R Study. *Environ Res* 108(2):260–267, PMID: 18774129, <https://doi.org/10.1016/j.envres.2008.07.014>.

Note to readers with disabilities: *EHP* strives to ensure that all journal content is accessible to all readers. However, some figures and Supplemental Material published in *EHP* articles may not conform to [508 standards](#) due to the complexity of the information being presented. If you need assistance accessing journal content, please contact ehp508@niehs.nih.gov. Our staff will work with you to assess and meet your accessibility needs within 3 working days.

Supplemental Material

Organophosphate Pesticide Metabolite Concentrations in Urine during Pregnancy and Offspring Nonverbal IQ at Age 6 Years

Todd A. Jusko, Michiel A. van den Dries, Anjoeka Pronk, Pamela A. Shaw, Mònica Guxens, Suzanne Spaan, Vincent W. Jaddoe, Henning Tiemeier, and Matthew P. Longnecker

Table of Contents

Table S1. Effect allele and single nucleotide polymorphism (SNP) descriptive statistics.

Table S2. Akaike information criterion (AIC) comparison between untransformed (UTF) and log₁₀ transformed DAP metabolite concentrations at <18 weeks, 18-25 weeks, and >25 weeks.

Table S3. Correlation coefficients for maternal and 6-year-old child urine dialkyl phosphate metabolite concentrations (n=708).

Table S4. Fully adjusted: Difference in child nonverbal IQ test score at age 6 years (and 95% confidence interval) per log₁₀ nmol/g creatinine increase in maternal (<18 weeks) urine dialkyl phosphate metabolite concentration by **PON1 type** (N=474).

Table S5. Fully adjusted: Difference in child nonverbal IQ test score at age 6 years (and 95% confidence interval) per log₁₀ nmol/g creatinine increase in maternal (18-25 weeks) urine dialkyl phosphate metabolite concentration by **PON1 type** (N=474).

Table S6. Fully adjusted: Difference in child nonverbal IQ test score at age 6 years (and 95% confidence interval) per log₁₀ nmol/g creatinine increase in maternal (>25 weeks) urine dialkyl phosphate metabolite concentration by **PON1 type** (N=474).

Table S7. Fully adjusted: Difference in child nonverbal IQ test score at age 6 years (and 95% confidence interval) per log₁₀ nmol/g creatinine increase in maternal (average pregnancy) urine dialkyl phosphate metabolite concentration by **PON1 type** (N=474).

Table S8. Difference in child sex, maternal age, ethnicity, and educational level adjusted child nonverbal IQ test score at age 6 years (and 95% confidence interval) per log₁₀ nmol/g creatinine increase in maternal (<18 weeks) urine dialkyl phosphate metabolite concentration by **PON1 type** (N=474).

Table S9. Difference in child sex, maternal age, ethnicity, and educational level adjusted child nonverbal IQ test score at age 6 years (and 95% confidence interval) per log₁₀ nmol/g creatinine increase in maternal (18-25 weeks) urine dialkyl phosphate metabolite concentration by **PON1 type** (N=474).

Table S10. Difference in child sex, maternal age, ethnicity, and educational level adjusted child nonverbal IQ test score at age 6 years (and 95% confidence interval) per log₁₀ nmol/g creatinine increase in maternal (>25 weeks) urine dialkyl phosphate metabolite concentration by **PON1 type** (N=474).

Table S11. Difference in child sex, maternal age, ethnicity, and educational level adjusted child nonverbal IQ test score at age 6 years (and 95% confidence interval) per log₁₀ nmol/g creatinine increase in maternal (average pregnancy) urine dialkyl phosphate metabolite concentration by **PON1 type** (N=474).

Table S12. Difference in child sex, maternal age, and educational level adjusted child nonverbal IQ test score at age 6 years (and 95% confidence interval) per log₁₀ nmol/g creatinine increase in maternal (<18 weeks) urine dialkyl phosphate metabolite concentration **in Dutch women**, by **PON1 type** (N=277).

Table S13. Difference in maternal age, child sex, and educational level adjusted child nonverbal IQ test score at age 6 years (and 95% confidence interval) per log₁₀ nmol/g creatinine increase in maternal (18-25 weeks) urine dialkyl phosphate metabolite concentration **in Dutch women**, by **PON1 type** (N=277).

Table S14. Difference in child sex, maternal age, and educational level adjusted child nonverbal IQ test score at age 6 years (and 95% confidence interval) per log₁₀ nmol/g creatinine increase in maternal (>25 weeks) urine dialkyl phosphate metabolite concentration **in Dutch women**, by **PON1 type** (N=277).

Table S15. Difference in child sex, maternal age, and educational level adjusted child nonverbal IQ test score at age 6 years (and 95% confidence interval) per log₁₀ nmol/g creatinine increase in maternal (average pregnancy) urine dialkyl phosphate metabolite concentration **in Dutch women**, by **PON1 type** (N=277).

Table S16. Concentrations <LOD substituted with LOD/√2: Difference in child nonverbal IQ test score at age 6 years (and 95% confidence interval) per log₁₀ nmol/g creatinine increase in maternal urine dialkyl phosphate metabolite concentration, by timing of pregnancy urine sampling and degree of adjustment (N=708).

Table S17. Creatinine adjustment as separate covariate: Difference in child nonverbal IQ test score at age 6 years (and 95% confidence interval) per log₁₀ nmol/g creatinine increase in maternal urine dialkyl phosphate metabolite concentration, by timing of pregnancy urine sampling and degree of adjustment (N=708).

Table S18. Removal of extreme values: Difference in child nonverbal IQ test score at age 6 years (and 95% confidence interval) per log₁₀ nmol/g creatinine increase in maternal urine dialkyl phosphate metabolite concentration, by timing of pregnancy urine sampling and degree of adjustment.

Table S19. Adjustment for prenatal fruit and vegetable consumption: Difference in child nonverbal IQ test score at age 6 years (and 95% confidence interval) per log₁₀ nmol/g creatinine increase in maternal urine dialkyl phosphate metabolite concentration, by timing of pregnancy urine sampling and degree of adjustment (N=708).

Table S20. Multiple informants model: Difference in child nonverbal IQ test score at age 6 years (and 95% confidence interval) per log₁₀ nmol/g creatinine increase in maternal urine dialkyl phosphate metabolite concentration, by timing of pregnancy urine sampling (N=708).

Table S21. Effect measure modification by maternal education: Difference in child nonverbal IQ test score at age 6 years (and 95% confidence interval) per log₁₀ nmol/g creatinine increase in maternal urine dialkyl phosphate metabolite concentration, by timing of pregnancy urine sampling, degree of adjustment, and **maternal education level** (N=708).

Table S22. Effect measure modification by child sex: Difference in child nonverbal IQ test score at age 6 years (and 95% confidence interval) per log₁₀ nmol/g creatinine increase in maternal urine dialkyl phosphate metabolite concentration, by timing of pregnancy urine sampling, degree of adjustment, and **child sex** (N=708).

Table S23. Complete-case only model (with the exclusion of IT-Home score): Difference in child nonverbal IQ test score at age 6 years (and 95% confidence interval) per log₁₀ nmol/g creatinine increase in maternal urine dialkyl phosphate metabolite concentration, by timing of pregnancy urine sampling, and degree of adjustment, among mother-child pairs with complete covariate data.

Table S24. Complete-case only model (with the inclusion of IT-Home score): Difference in child nonverbal IQ test score at age 6 years (and 95% confidence interval) per log₁₀ nmol/g creatinine increase in maternal urine dialkyl phosphate metabolite concentration, by timing of pregnancy urine sampling, and degree of adjustment, among mother-child pairs with complete covariate data.

Table S25. Excluding DEDTP (i.e., including only those metabolites with at least 80% of values >LOD): Difference in child nonverbal IQ test score at age 6 years (and 95% confidence interval) per log₁₀ nmol/g creatinine increase in maternal urine dialkyl phosphate metabolite concentration, by timing of pregnancy urine sampling and degree of adjustment (N=708).

Table S26. Difference in **Mosaics** test score at age 6 years (and 95% confidence interval) per log₁₀ nmol/g creatinine increase in maternal urine dialkyl phosphate metabolite concentration, by timing of pregnancy urine sampling and degree of adjustment (N=708).

Table S27. Difference in **Categories** test score at age 6 years (and 95% confidence interval) per log₁₀ nmol/g creatinine increase in maternal urine dialkyl phosphate metabolite concentration, by timing of pregnancy urine sampling and degree of adjustment (N=708).

Figure S1. Restricted cubic spline (and 95% confidence interval) of adjusted child nonverbal IQ scores and (untransformed) total dialkyl phosphate concentrations, by timing of pregnancy urine sampling (n=708). Adjusted for child sex, maternal age, ethnicity (Dutch, other-western, and non-western), education (low, intermediate, and high), income (low, middle, and high), marital status, maternal alcohol consumption (no alcohol consumption during pregnancy, alcohol consumption until pregnancy was known, occasional alcohol consumption during pregnancy, and frequent alcohol consumption during pregnancy), maternal non-verbal IQ, BMI categories (<18.5, 18.5-25, 25-30, and 30+), height of the mother, parity categories (0, 1, and 2+), IT-Home quartiles, and smoking categories (no smoking during pregnancy, smoked until pregnancy was known, and smoked during pregnancy).

Figure S2. Restricted cubic spline (and 95% confidence interval) of adjusted child nonverbal IQ scores and (untransformed) diethyl alkyl phosphate concentrations, by timing of pregnancy urine sampling (n=708). Adjusted for child sex, maternal age, ethnicity (Dutch, other-western and non-western), education (low, intermediate, and high), income (low, middle, and high), marital status, maternal alcohol consumption (no alcohol consumption during pregnancy, alcohol consumption until pregnancy was known, occasional alcohol consumption during pregnancy, and frequent alcohol consumption during pregnancy), maternal non-verbal IQ, BMI categories (<18.5, 18.5-25, 25-30, and 30+), height of the mother, parity categories (0, 1, and 2+), IT-Home quartiles, and smoking categories (no smoking during pregnancy, smoked until pregnancy was known, and smoked during pregnancy).

Figure S3. Restricted cubic spline (and 95% confidence interval) of adjusted child nonverbal IQ scores and (untransformed) dimethyl alkyl phosphate concentrations, by timing of pregnancy urine sampling (n=708). Adjusted for child sex, maternal age, ethnicity (Dutch, other-western and non-western), education (low, intermediate, and high), income (low, middle, and high), marital status, maternal alcohol consumption (no alcohol consumption during pregnancy, alcohol consumption until pregnancy was known, occasional alcohol consumption during pregnancy, and frequent alcohol consumption during pregnancy), maternal non-verbal IQ, BMI categories (<18.5, 18.5-25, 25-30, and 30+), height of the mother, parity categories (0, 1, and 2+), IT-Home quartiles, and smoking categories (no smoking during pregnancy, smoked until pregnancy was known, and smoked during pregnancy).

Note to readers with disabilities: *EHP* strives to ensure that all journal content is accessible to all readers. However, some figures and Supplemental Material published in *EHP* articles may not conform to [508 standards](#) due to the complexity of the information being presented. If you need assistance accessing journal content, please contact ehp508@niehs.nih.gov. Our staff will work with you to assess and meet your accessibility needs within 3 working days.

Supplemental Material

Organophosphate Pesticide Metabolite Concentrations in Urine during Pregnancy and Offspring Nonverbal IQ at Age 6 Years

Todd A. Jusko, Michiel A. van den Dries, Anjoeka Pronk, Pamela A. Shaw, Mònica Guxens, Suzanne Spaan, Vincent W. Jaddoe, Henning Tiemeier, and Matthew P. Longnecker

Table of Contents

Table S1. Effect allele and single nucleotide polymorphism (SNP) descriptive statistics.

Table S2. Akaike information criterion (AIC) comparison between untransformed (UTF) and log₁₀ transformed DAP metabolite concentrations at <18 weeks, 18-25 weeks, and >25 weeks.

Table S3. Correlation coefficients for maternal and 6-year-old child urine dialkyl phosphate metabolite concentrations (n=708).

Table S4. Fully adjusted: Difference in child nonverbal IQ test score at age 6 years (and 95% confidence interval) per log₁₀ nmol/g creatinine increase in maternal (<18 weeks) urine dialkyl phosphate metabolite concentration by **PON1 type** (N=474).

Table S5. Fully adjusted: Difference in child nonverbal IQ test score at age 6 years (and 95% confidence interval) per log₁₀ nmol/g creatinine increase in maternal (18-25 weeks) urine dialkyl phosphate metabolite concentration by **PON1 type** (N=474).

Table S6. Fully adjusted: Difference in child nonverbal IQ test score at age 6 years (and 95% confidence interval) per log₁₀ nmol/g creatinine increase in maternal (>25 weeks) urine dialkyl phosphate metabolite concentration by **PON1 type** (N=474).

Table S7. Fully adjusted: Difference in child nonverbal IQ test score at age 6 years (and 95% confidence interval) per log₁₀ nmol/g creatinine increase in maternal (average pregnancy) urine dialkyl phosphate metabolite concentration by **PON1 type** (N=474).

Table S8. Difference in child sex, maternal age, ethnicity, and educational level adjusted child nonverbal IQ test score at age 6 years (and 95% confidence interval) per log₁₀ nmol/g creatinine increase in maternal (<18 weeks) urine dialkyl phosphate metabolite concentration by **PON1 type** (N=474).

Table S9. Difference in child sex, maternal age, ethnicity, and educational level adjusted child nonverbal IQ test score at age 6 years (and 95% confidence interval) per log₁₀ nmol/g creatinine increase in maternal (18-25 weeks) urine dialkyl phosphate metabolite concentration by **PON1 type** (N=474).

Table S10. Difference in child sex, maternal age, ethnicity, and educational level adjusted child nonverbal IQ test score at age 6 years (and 95% confidence interval) per log₁₀ nmol/g creatinine increase in maternal (>25 weeks) urine dialkyl phosphate metabolite concentration by **PON1 type** (N=474).

Table S11. Difference in child sex, maternal age, ethnicity, and educational level adjusted child nonverbal IQ test score at age 6 years (and 95% confidence interval) per log₁₀ nmol/g creatinine increase in maternal (average pregnancy) urine dialkyl phosphate metabolite concentration by **PON1 type** (N=474).

Table S12. Difference in child sex, maternal age, and educational level adjusted child nonverbal IQ test score at age 6 years (and 95% confidence interval) per log₁₀ nmol/g creatinine increase in maternal (<18 weeks) urine dialkyl phosphate metabolite concentration **in Dutch women**, by **PON1 type** (N=277).

Table S13. Difference in maternal age, child sex, and educational level adjusted child nonverbal IQ test score at age 6 years (and 95% confidence interval) per log₁₀ nmol/g creatinine increase in maternal (18-25 weeks) urine dialkyl phosphate metabolite concentration **in Dutch women**, by **PON1 type** (N=277).

Table S14. Difference in child sex, maternal age, and educational level adjusted child nonverbal IQ test score at age 6 years (and 95% confidence interval) per log₁₀ nmol/g creatinine increase in maternal (>25 weeks) urine dialkyl phosphate metabolite concentration **in Dutch women**, by **PON1 type** (N=277).

Table S15. Difference in child sex, maternal age, and educational level adjusted child nonverbal IQ test score at age 6 years (and 95% confidence interval) per log₁₀ nmol/g creatinine increase in maternal (average pregnancy) urine dialkyl phosphate metabolite concentration **in Dutch women**, by **PON1 type** (N=277).

Table S16. Concentrations <LOD substituted with LOD/√2: Difference in child nonverbal IQ test score at age 6 years (and 95% confidence interval) per log₁₀ nmol/g creatinine increase in maternal urine dialkyl phosphate metabolite concentration, by timing of pregnancy urine sampling and degree of adjustment (N=708).

Table S17. Creatinine adjustment as separate covariate: Difference in child nonverbal IQ test score at age 6 years (and 95% confidence interval) per log₁₀ nmol/g creatinine increase in maternal urine dialkyl phosphate metabolite concentration, by timing of pregnancy urine sampling and degree of adjustment (N=708).

Table S18. Removal of extreme values: Difference in child nonverbal IQ test score at age 6 years (and 95% confidence interval) per log₁₀ nmol/g creatinine increase in maternal urine dialkyl phosphate metabolite concentration, by timing of pregnancy urine sampling and degree of adjustment.

Table S19. Adjustment for prenatal fruit and vegetable consumption: Difference in child nonverbal IQ test score at age 6 years (and 95% confidence interval) per log₁₀ nmol/g creatinine increase in maternal urine dialkyl phosphate metabolite concentration, by timing of pregnancy urine sampling and degree of adjustment (N=708).

Table S20. Multiple informants model: Difference in child nonverbal IQ test score at age 6 years (and 95% confidence interval) per log₁₀ nmol/g creatinine increase in maternal urine dialkyl phosphate metabolite concentration, by timing of pregnancy urine sampling (N=708).

Table S21. Effect measure modification by maternal education: Difference in child nonverbal IQ test score at age 6 years (and 95% confidence interval) per log₁₀ nmol/g creatinine increase in maternal urine dialkyl phosphate metabolite concentration, by timing of pregnancy urine sampling, degree of adjustment, and **maternal education level** (N=708).

Table S22. Effect measure modification by child sex: Difference in child nonverbal IQ test score at age 6 years (and 95% confidence interval) per log₁₀ nmol/g creatinine increase in maternal urine dialkyl phosphate metabolite concentration, by timing of pregnancy urine sampling, degree of adjustment, and **child sex** (N=708).

Table S23. Complete-case only model (with the exclusion of IT-Home score): Difference in child nonverbal IQ test score at age 6 years (and 95% confidence interval) per log₁₀ nmol/g creatinine increase in maternal urine dialkyl phosphate metabolite concentration, by timing of pregnancy urine sampling, and degree of adjustment, among mother-child pairs with complete covariate data.

Table S24. Complete-case only model (with the inclusion of IT-Home score): Difference in child nonverbal IQ test score at age 6 years (and 95% confidence interval) per log₁₀ nmol/g creatinine increase in maternal urine dialkyl phosphate metabolite concentration, by timing of pregnancy urine sampling, and degree of adjustment, among mother-child pairs with complete covariate data.

Table S25. Excluding DEDTP (i.e., including only those metabolites with at least 80% of values >LOD): Difference in child nonverbal IQ test score at age 6 years (and 95% confidence interval) per log₁₀ nmol/g creatinine increase in maternal urine dialkyl phosphate metabolite concentration, by timing of pregnancy urine sampling and degree of adjustment (N=708).

Table S26. Difference in **Mosaics** test score at age 6 years (and 95% confidence interval) per log₁₀ nmol/g creatinine increase in maternal urine dialkyl phosphate metabolite concentration, by timing of pregnancy urine sampling and degree of adjustment (N=708).

Table S27. Difference in **Categories** test score at age 6 years (and 95% confidence interval) per log₁₀ nmol/g creatinine increase in maternal urine dialkyl phosphate metabolite concentration, by timing of pregnancy urine sampling and degree of adjustment (N=708).

Figure S1. Restricted cubic spline (and 95% confidence interval) of adjusted child nonverbal IQ scores and (untransformed) total dialkyl phosphate concentrations, by timing of pregnancy urine sampling (n=708). Adjusted for child sex, maternal age, ethnicity (Dutch, other-western, and non-western), education (low, intermediate, and high), income (low, middle, and high), marital status, maternal alcohol consumption (no alcohol consumption during pregnancy, alcohol consumption until pregnancy was known, occasional alcohol consumption during pregnancy, and frequent alcohol consumption during pregnancy), maternal non-verbal IQ, BMI categories (<18.5, 18.5-25, 25-30, and 30+), height of the mother, parity categories (0, 1, and 2+), IT-Home quartiles, and smoking categories (no smoking during pregnancy, smoked until pregnancy was known, and smoked during pregnancy).

Figure S2. Restricted cubic spline (and 95% confidence interval) of adjusted child nonverbal IQ scores and (untransformed) diethyl alkyl phosphate concentrations, by timing of pregnancy urine sampling (n=708). Adjusted for child sex, maternal age, ethnicity (Dutch, other-western and non-western), education (low, intermediate, and high), income (low, middle, and high), marital status, maternal alcohol consumption (no alcohol consumption during pregnancy, alcohol consumption until pregnancy was known, occasional alcohol consumption during pregnancy, and frequent alcohol consumption during pregnancy), maternal non-verbal IQ, BMI categories (<18.5, 18.5-25, 25-30, and 30+), height of the mother, parity categories (0, 1, and 2+), IT-Home quartiles, and smoking categories (no smoking during pregnancy, smoked until pregnancy was known, and smoked during pregnancy).

Figure S3. Restricted cubic spline (and 95% confidence interval) of adjusted child nonverbal IQ scores and (untransformed) dimethyl alkyl phosphate concentrations, by timing of pregnancy urine sampling (n=708). Adjusted for child sex, maternal age, ethnicity (Dutch, other-western and non-western), education (low, intermediate, and high), income (low, middle, and high), marital status, maternal alcohol consumption (no alcohol consumption during pregnancy, alcohol consumption until pregnancy was known, occasional alcohol consumption during pregnancy, and frequent alcohol consumption during pregnancy), maternal non-verbal IQ, BMI categories (<18.5, 18.5-25, 25-30, and 30+), height of the mother, parity categories (0, 1, and 2+), IT-Home quartiles, and smoking categories (no smoking during pregnancy, smoked until pregnancy was known, and smoked during pregnancy).

Table S1. Effect allele and single nucleotide polymorphism (SNP) descriptive statistics.

PON1	SNP	Al1	Al2	Freq1	MAF	Quality	R²
PON1-Q192	rs662	C	T	0.35474	0.35474	0.99993	0.99989
PON1-108	rs705379	G	A	0.56718	0.43282	0.98614	0.95791
PON1-161	rs705381	C	T	0.74361	0.25639	0.99570	0.98359
PON1- L55M	rs854560	A	T	0.67882	0.32118	0.99974	0.99903
PON1-909	rs854572	C	G	0.52449	0.47551	0.99881	0.99633

Note: rs662 was directly genotyped. rs705379, rs705381, rs854560 and rs854572 are based on imputed genotypes.

Table S2. Akaike information criterion (AIC) comparison between untransformed (UTF) and log₁₀ transformed DAP metabolite concentrations at <18 weeks, 18-25 weeks, and >25 weeks.

	UTF <18 weeks	Log ₁₀ <18 weeks	UTF 18-25 weeks	Log ₁₀ 18-25 weeks	UTF >25 weeks	Log ₁₀ >25 weeks	Mean UTF DAP	Mean Log ₁₀ DAP	Mutually Adjusted UTF DAP	Mutually Adjusted Log ₁₀ DAP
Imputation set										
1	5825.958	5825.072	5825.344	5826.025	5823.157	5821.785	5825.786	5825.331	5825.071	5823.574
2	5826.598	5825.442	5825.925	5826.666	5823.462	5821.939	5826.434	5826.020	5824.826	5822.834
3	5826.639	5826.015	5826.090	5826.748	5823.600	5822.573	5826.412	5826.123	5825.320	5824.369
4	5827.486	5827.284	5827.329	5828.101	5825.006	5823.170	5827.350	5827.205	5826.170	5824.875
5	5824.194	5823.400	5823.744	5824.393	5822.113	5820.892	5824.175	5823.845	5823.871	5822.498
6	5828.589	5827.536	5828.423	5829.002	5826.163	5824.449	5828.470	5828.001	5827.932	5825.837
7	5825.592	5824.710	5825.191	5825.782	5823.032	5821.161	5825.425	5824.928	5825.028	5822.869
8	5824.786	5823.832	5823.945	5824.831	5821.791	5820.049	5824.652	5824.162	5823.267	5821.500
9	5826.308	5825.438	5825.829	5826.475	5823.164	5821.843	5826.078	5825.800	5824.742	5823.239
10	5826.741	5825.873	5826.505	5826.959	5823.316	5821.546	5826.308	5825.769	5825.646	5823.532
Mean AIC	5826.289	5825.46	5825.833	5826.498	5823.48	5821.941	5826.109	5825.718	5825.187	5823.513

Table S3. Correlation coefficients for maternal and 6-year-old child urine dialkyl phosphate metabolite concentrations (n=708).

Spearman's rho correlations coefficients	< 18 weeks gestation	18 – 25 weeks gestation	> 25 weeks gestation	Child at age 6
Dialkyl phosphates (total)				
< 18 weeks' gestation	1			
18 – 25 weeks' gestation	0.22**	1		
> 25 weeks' gestation	0.17**	0.31**	1	
child at age 6	0.05	0.03	0.04	1
Diethyl alkyl phosphates				
< 18 weeks' gestation	1			
18 – 25 weeks' gestation	0.29**	1		
> 25 weeks' gestation	0.18**	0.28**	1	
child at age 6	0.07	0.01	0.07	1
Dimethyl alkyl phosphates				
< 18 weeks' gestation	1			
18 – 25 weeks' gestation	0.19**	1		
> 25 weeks' gestation	0.15**	0.30**	1	
child at age 6	0.02	0.03	0.02	1
Pearson correlation coefficients (log10)	< 18 weeks gestation	18 – 25 weeks gestation	> 25 weeks gestation	Child at age 6
Dialkyl phosphates (total)				
< 18 weeks' gestation	1			
18 – 25 weeks' gestation	0.24**	1		
> 25 weeks' gestation	0.18**	0.32**	1	
child at age 6	-0.01	0.01	-0.01	1
Diethyl alkyl phosphates				
< 18 weeks' gestation	1			
18 – 25 weeks' gestation	0.22**	1		
> 25 weeks' gestation	0.12**	0.23**	1	
child at age 6	0.01	-0.03	0.04	1
Dimethyl alkyl phosphates				
< 18 weeks' gestation	1			
18 – 25 weeks' gestation	0.20**	1		
> 25 weeks' gestation	0.16**	0.31**	1	
child at age 6	-0.02	0.02	-0.01	1

*P<0.05 ** P<0.01

Table S4. Fully adjusted: Difference in child nonverbal IQ test score at age 6 years (and 95% confidence interval) per log10 nmol/g creatinine increase in maternal (<18 weeks) urine dialkyl phosphate metabolite concentration by **PON1 type** (N=474).

		N	Adjusted models ^a											
			Dialkyl phosphates (total) ^b			Diethyl alkyl phosphates ^c			Dimethyl alkyl phosphates ^d					
			β	(95% CI)		β	(95% CI)		β	(95% CI)				
PON1Q192														
	QQ (TT)	226	1.3	-4.9	to	7.4	4.2	-1.0	to	9.4	-0.1	-6.0	to	5.8
	QR (CT)	202	-3.2	-9.7	to	3.4	-3.7	-7.7	to	0.3	-3.3	-9.6	to	3.0
	RR (CC) ^e	46	-4.7	-29.6	to	20.3	5.0	-12.7	to	22.6	-6.6	-30.0	to	16.7
	P interaction ^f					0.292				0.042				0.437
PON1L55														
	TT	65	-1.0	-15.5	to	13.6	-0.5	-11.1	to	10.2	-0.7	-14.7	to	13.3
	AT	198	-4.7	-12.1	to	2.8	-1.3	-15.1	to	4.4	-5.2	-15.1	to	1.8
	AA	211	0.2	-6.1	to	6.5	-2.1	-6.0	to	1.7	-0.4	-6.4	to	5.7
	P interaction ^f					0.968				0.402				0.982
PON1-108														
	TT	90	-3.7	-14.8	to	7.4	1.1	-6.5	to	8.7	-5.5	-16.2	to	5.1
	CT	232	2.0	-4.6	to	8.7	3.3	-2.6	to	9.3	1.3	-5.0	to	7.6
	CC	152	-2.1	-9.9	to	5.7	-3.3	-7.6	to	1.1	-2.3	-9.7	to	5.1
	P interaction ^f					0.722				0.175				0.995
PON1-909														
	GG	107	-4.8	-15.1	to	5.5	-0.3	-7.2	to	6.7	-6.0	-15.9	to	3.9
	CG	229	1.8	-4.8	to	8.4	2.3	-3.6	to	8.3	1.3	-4.9	to	7.6
	CC	138	-2.5	-11.2	to	6.1	-2.9	-7.4	to	1.7	-3.2	-11.5	to	5.0
	P interaction ^f					0.677				0.254				0.870
PON1-161														
	GG ^e	37	8.4	-13.2	to	30.1	12.3	-6.0	to	30.7	6.5	-13.7	to	26.8
	CG	172	-2.9	-9.7	to	3.9	-0.3	-6.2	to	5.7	-3.1	-9.6	to	3.5
	CC	265	-1.9	-8.1	to	4.2	-2.3	-5.9	to	1.4	-2.8	-8.7	to	3.1
	P interaction ^f					0.599				0.152				0.458

a. Adjusted for child sex, maternal age, ethnicity (Dutch, other-western and non-western), education (low, intermediate, and high), income (low, middle, and high), marital status, maternal alcohol consumption (no alcohol consumption during pregnancy, alcohol consumption until pregnancy was known, occasional alcohol consumption during pregnancy, and frequent alcohol consumption during pregnancy), maternal non-verbal IQ, BMI categories (<18.5, 18.5-25, 25-30, and 30+), height of the mother, parity categories (0, 1, and 2+), Home IT quartiles, and smoking categories (no smoking during pregnancy, smoked until pregnancy was known, and smoked during pregnancy).

b. Total dialkyl phosphates is the sum of DEDTP, DETP, DEP, DMDTP, DMTP and DMP.

c. Diethyl alkyl phosphates is the sum of DEDTP, DETP and DEP.

d. Dimethyl alkyl phosphates is the sum of DMDTP, DMTP and DMP.

e. BMI included as a continuous variable for PON1Q192 and PON1-161 because of missing levels in BMI for RR and GG.

f. P-value based on interaction where the PON-1 type was treated as an ordinal variable.

Table S5. Fully adjusted: Difference in child nonverbal IQ test score at age 6 years (and 95% confidence interval) per log10 nmol/g creatinine increase in maternal (**18-25 weeks**) urine dialkyl phosphate metabolite concentration by **PON1 type** (N=474).

		N	Adjusted models ^a											
			Dialkyl phosphates (total) ^b			Diethyl alkyl phosphates ^c			Dimethyl alkyl phosphates ^d					
			β	(95% CI)		β	(95% CI)		β	(95% CI)				
PON1Q192														
	QQ (TT)	226	2.6	-4.2	to	9.4	1.7	-3.1	to	6.5	2.3	-4.4	to	9.0
	QR (CT)	202	3.7	-4.2	to	11.6	2.5	-1.7	to	6.7	2.7	-4.7	to	10.0
	RR (CC) ^e	46	1.1	-24.3	to	26.6	3.0	-17.6	to	23.6	-1.0	-24.9	to	22.9
	P interaction ^f				0.724				0.910					0.543
PON1L55														
	TT	65	8.1	-5.6	to	21.8	8.2	-3.2	to	19.6	7.0	-6.7	to	20.8
	AT	198	1.2	-6.4	to	8.9	-0.9	-7.9	to	5.0	1.6	-7.9	to	9.0
	AA	211	1.5	-6.0	to	9.1	3.0	-0.8	to	6.8	-0.7	-7.8	to	6.5
	P interaction ^f				0.604				0.872					0.381
PON1-108														
	TT	90	7.1	-6.4	to	20.7	6.3	-4.3	to	16.9	5.3	-7.4	to	18.1
	CT	232	0.2	-7.0	to	7.4	0.0	-4.0	to	4.0	0.2	-6.8	to	7.1
	CC	152	1.8	-6.7	to	10.3	4.8	-1.2	to	10.8	-0.1	-8.3	to	8.1
	P interaction ^f				0.232				0.951					0.175
PON1-909														
	GG	107	3.9	-7.9	to	15.8	4.1	-4.9	to	13.1	2.7	-8.5	to	13.9
	CG	229	1.2	-6.0	to	8.5	0.2	-3.8	to	4.2	1.3	-5.7	to	8.3
	CC	138	2.8	-6.3	to	11.9	5.0	-1.4	to	11.4	0.6	-8.2	to	9.4
	P interaction ^f				0.414				0.808					0.317
PON1-161														
	GG ^e	37	6.0	-28.5	to	40.4	-0.1	-16.3	to	16.1	5.0	-29.0	to	38.9
	CG	172	-1.5	-9.6	to	6.6	1.4	-2.7	to	5.5	-1.8	-9.4	to	5.7
	CC	265	4.4	-2.3	to	11.1	3.4	-1.5	to	8.4	3.3	-3.2	to	9.8
	P interaction ^f				0.808				0.920					0.822

a. Adjusted for child sex, maternal age, ethnicity (Dutch, other-western and non-western), education (low, intermediate, and high), income (low, middle, and high), marital status, maternal alcohol consumption (no alcohol consumption during pregnancy, alcohol consumption until pregnancy was known, occasional alcohol consumption during pregnancy, and frequent alcohol consumption during pregnancy), maternal non-verbal IQ, BMI categories (<18.5, 18.5-25, 25-30, and 30+), height of the mother, parity categories (0, 1, and 2+), Home IT quartiles, and smoking categories (no smoking during pregnancy, smoked until pregnancy was known, and smoked during pregnancy).

b. Total dialkyl phosphates is the sum of DEDTP, DETP, DEP, DMDTP, DMTP and DMP.

c. Diethyl alkyl phosphates is the sum of DEDTP, DETP and DEP.

d. Dimethyl alkyl phosphates is the sum of DMDTP, DMTP and DMP

e. BMI included as a continuous variable for PON1Q192 and PON1-161 because of missing levels in BMI for RR and GG.

f. P-value based on interaction where the PON-1 type was treated as an ordinal variable.

Table S6. Fully adjusted: Difference in child nonverbal IQ test score at age 6 years (and 95% confidence interval) per log10 nmol/g creatinine increase in maternal (>25 weeks) urine dialkyl phosphate metabolite concentration by **PON1 type** (N=474).

	N	Adjusted models ^a											
		Dialkyl phosphates (total) ^b				Diethyl alkyl phosphates ^c			Dimethyl alkyl phosphates ^d				
		β	(95% CI)		β	(95% CI)		β	(95% CI)				
PON1Q192													
QQ (TT)	226	-6.6	-13.4	to	0.1	-0.8	-6.0	to	4.4	-6.7	-13.2	to	-0.1
QR (CT)	202	3.2	-4.1	to	10.5	2.8	-3.6	to	9.1	2.6	-4.2	to	9.4
RR (CC) ^e	46	-7.2	-28.1	to	13.8	-1.3	-16.7	to	14.1	-9.2	-31.5	to	13.1
P interaction ^f					0.749				0.927				0.815
PON1L55													
TT	65	-2.9	-17.0	to	11.3	-3.6	-16.1	to	9.0	-1.9	-14.7	to	11.0
AT	198	-5.6	-13.7	to	2.4	1.6	-17.8	to	8.1	-6.0	-17.8	to	1.6
AA	211	0.1	-6.2	to	6.5	-1.1	-6.3	to	4.0	0.2	-5.9	to	6.4
P interaction ^f					0.383				0.904				0.448
PON1-108													
TT	90	-5.2	-19.2	to	8.7	5.1	-6.9	to	17.1	-5.9	-18.6	to	6.7
CT	232	-0.1	-7.2	to	7.0	-0.2	-5.7	to	5.3	-0.4	-7.1	to	6.4
CC	152	-2.6	-9.8	to	4.6	-0.5	-6.6	to	5.5	-2.4	-9.3	to	4.6
P interaction ^f					0.757				0.860				0.656
PON1-909													
GG	107	-5.9	-17.8	to	6.0	-0.9	-10.7	to	9.0	-5.5	-16.5	to	5.4
CG	229	0.5	-6.4	to	7.4	1.7	-3.8	to	7.2	-0.1	-6.7	to	6.5
CC	138	-2.4	-10.1	to	5.4	-1.2	-7.8	to	5.4	-2.1	-9.5	to	5.4
P interaction ^f					0.644				0.883				0.584
PON1-161													
GG ^e	37	-11.9	-34.6	to	10.7	-16.8	-35.9	to	2.3	-9.3	-32.3	to	13.6
CG	172	-2.1	-9.7	to	5.5	4.6	-1.2	to	10.4	-3.8	-11.1	to	3.5
CC	265	-2.8	-9.1	to	3.5	-2.4	-7.8	to	2.9	-2.3	-8.2	to	3.6
P interaction ^f					0.831				0.676				0.870

a. Adjusted for child sex, maternal age, ethnicity (Dutch, other-western and non-western), education (low, intermediate, and high), income (low, middle, and high), marital status, maternal alcohol consumption (no alcohol consumption during pregnancy, alcohol consumption until pregnancy was known, occasional alcohol consumption during pregnancy, and frequent alcohol consumption during pregnancy), maternal non-verbal IQ, BMI categories (<18.5, 18.5-25, 25-30, and 30+), height of the mother, parity categories (0, 1, and 2+), Home IT quartiles, and smoking categories (no smoking during pregnancy, smoked until pregnancy was known, and smoked during pregnancy).

b. Total dialkyl phosphates is the sum of DEDTP, DETP, DEP, DMDTP, DMTP and DMP.

c. Diethyl alkyl phosphates is the sum of DEDTP, DETP and DEP.

d. Dimethyl alkyl phosphates is the sum of DMDTP, DMTP and DMP.

e. BMI included as a continuous variable for PON1Q192 and PON1-161 because of missing levels in BMI for RR and GG.

f. P-value based on interaction where the PON-1 type was treated as an ordinal variable.

Table S7. Fully adjusted: Difference in child nonverbal IQ test score at age 6 years (and 95% confidence interval) per log10 nmol/g creatinine increase in maternal (**average pregnancy**) urine dialkyl phosphate metabolite concentration by **PON1 type** (N=474).

	N	Adjusted models ^a											
		Dialkyl phosphates (total) ^b				Diethyl alkyl phosphates ^c				Dimethyl alkyl phosphates ^d			
		Averaged across pregnancy				Averaged across pregnancy				Averaged across pregnancy			
		β	(95% CI)		β	(95% CI)		β	(95% CI)				
PON1Q192													
QQ (TT)	226	-2.6	-11.8	to	6.6	2.0	-4.8	to	8.8	-3.6	-12.5	to	5.2
QR (CT)	202	3.5	-6.2	to	13.1	6.8	-1.5	to	15.2	2.6	-6.5	to	11.7
RR (CC) ^e	46	-7.7	-35.9	to	20.6	4.3	-15.9	to	24.5	-11.6	-40.5	to	17.4
P interaction ^f					0.786				0.886				0.800
PON1L55													
TT	65	1.0	-18.4	to	20.4	1.2	-12.0	to	14.4	1.0	-18.4	to	20.5
AT	198	-5.0	-15.8	to	5.9	1.8	-20.7	to	10.2	-5.4	-20.7	to	4.8
AA	211	2.0	-6.5	to	10.5	4.8	-2.3	to	11.9	0.9	-7.2	to	9.0
P interaction ^f					0.675				0.721				0.724
PON1-108													
TT	90	-2.5	-20.1	to	15.0	6.3	-6.4	to	19.0	-4.9	-21.5	to	11.8
CT	232	2.3	-7.3	to	11.8	3.3	-4.3	to	10.8	1.3	-7.9	to	10.5
CC	152	-1.2	-11.4	to	9.1	3.5	-5.0	to	12.1	-1.6	-11.3	to	8.1
P interaction ^f					0.631				0.569				0.826
PON1-909													
GG	107	-5.1	-20.7	to	10.6	2.1	-8.9	to	13.1	-5.8	-20.7	to	9.1
CG	229	3.1	-6.2	to	12.4	3.4	-4.2	to	11.0	2.1	-6.8	to	11.0
CC	138	-0.7	-11.9	to	10.5	5.2	-3.9	to	14.3	-1.5	-12.1	to	9.1
P interaction ^f					0.763				0.888				0.891
PON1-161													
GG ^e	37	-0.4	-31.7	to	30.8	-4.3	-34.4	to	25.7	0.1	-28.7	to	28.9
CG	172	-5.1	-15.1	to	4.9	2.7	-5.7	to	11.1	-5.9	-15.3	to	3.5
CC	265	0.6	-8.2	to	9.3	3.9	-2.8	to	10.5	-0.7	-9.1	to	7.8
P interaction ^f					0.998				0.650				0.792

a. Adjusted for child sex, maternal age, ethnicity (Dutch, other-western and non-western), education (low, intermediate, and high), income (low, middle, and high), marital status, maternal alcohol consumption (no alcohol consumption during pregnancy, alcohol consumption until pregnancy was known, occasional alcohol consumption during pregnancy, and frequent alcohol consumption during pregnancy), maternal non-verbal IQ, BMI categories (<18.5, 18.5-25, 25-30, and 30+), height of the mother, parity categories (0, 1, and 2+), Home IT quartiles, and smoking categories (no smoking during pregnancy, smoked until pregnancy was known, and smoked during pregnancy).

b. Total dialkyl phosphates is the sum of DEDTP, DETP, DEP, DMDTP, DMTP and DMP.

c. Diethyl alkyl phosphates is the sum of DEDTP, DETP and DEP.

d. Dimethyl alkyl phosphates is the sum of DMDTP, DMTP and DMP

e. BMI included as a continuous variable for PON1Q192 and PON1-161 because of missing levels in BMI for RR and GG.

f. P-value based on interaction where the PON-1 type was treated as an ordinal variable.

Table S8. Difference in child sex, maternal age, ethnicity, and educational level adjusted child nonverbal IQ test score at age 6 years (and 95% confidence interval) per log10 nmol/g creatinine increase in maternal (<18 weeks) urine dialkyl phosphate metabolite concentration by PON1 type (N=474).

	N	Adjusted models ^a											
		Dialkyl phosphates (total) ^b				Diethyl alkyl phosphates ^c				Dimethyl alkyl phosphates ^d			
		β	<18 weeks			β	<18 weeks			β	<18 weeks		
		(95% CI)				(95% CI)				(95% CI)			
PON1Q192													
QQ (TT)	226	1.5	-4.6	to	7.5	4.9	-0.1	to	10.0	0.0	-5.8	to	5.8
QR (CT)	202	-3.5	-9.7	to	2.6	-3.8	-7.5	to	-0.1	-3.5	-9.4	to	2.4
RR (CC)	46	-0.5	-16.6	to	15.5	0.9	-10.7	to	12.5	-0.6	-15.3	to	14.2
P interaction ^e					0.361				0.039				0.537
PON1L55													
TT	65	2.8	-8.7	to	14.4	2.6	-6.7	to	11.9	2.6	-8.4	to	13.6
AT	198	-3.4	-10.2	to	3.5	-0.3	-13.5	to	5.0	-4.3	-13.5	to	2.3
AA	211	-1.6	-7.5	to	4.4	-2.3	-5.9	to	1.4	-1.9	-7.5	to	3.8
P interaction ^e					0.818				0.299				0.866
PON1-108													
TT	90	-4.6	-14.5	to	5.3	0.6	-6.2	to	7.5	-6.8	-16.4	to	2.8
CT	232	1.3	-5.0	to	7.7	2.3	-3.2	to	7.8	0.8	-5.3	to	6.9
CC	152	-3.1	-9.8	to	3.6	-2.9	-6.6	to	0.9	-3.1	-9.5	to	3.3
P interaction ^e					0.700				0.213				0.992
PON1-909													
GG	107	-3.9	-13.5	to	5.6	0.0	-6.5	to	6.6	-5.9	-15.1	to	3.4
CG	229	1.3	-4.9	to	7.5	1.8	-3.6	to	7.3	1.0	-5.0	to	6.9
CC	138	-3.2	-10.5	to	4.2	-2.4	-6.3	to	1.5	-3.6	-10.6	to	3.4
P interaction ^e					0.679				0.319				0.891
PON1-161													
GG	37	4.0	-10.0	to	18.0	11.8	-2.9	to	26.6	3.8	-9.4	to	17.0
CG	172	-2.2	-8.3	to	3.9	0.0	-5.4	to	5.4	-2.3	-8.2	to	3.5
CC	265	-2.2	-8.3	to	3.8	-2.2	-5.7	to	1.3	-3.2	-9.0	to	2.6
P interaction ^e					0.621				0.150				0.465

a. Adjusted for child sex, maternal age, ethnicity (Dutch, other-western, and non-western), and education (low, intermediate, and high).

b. Total dialkyl phosphates is the sum of DEDTP, DETP, DEP, DMDTP, DMTP and DMP.

c. Diethyl alkyl phosphates is the sum of DEDTP, DETP and DEP.

d. Dimethyl alkyl phosphates is the sum of DMDTP, DMTP and DMP.

e. P-value based on interaction where the PON-1 type was treated as an ordinal variable.

Table S9. Difference in child sex, maternal age, ethnicity, and educational level adjusted child nonverbal IQ test score at age 6 years (and 95% confidence interval) per log₁₀ nmol/g creatinine increase in maternal (18-25 weeks) urine dialkyl phosphate metabolite concentration by PON1 type (N=474).

	N	Adjusted models ^a									
		Dialkyl phosphates (total) ^b			Diethyl alkyl phosphates ^c			Dimethyl alkyl phosphates ^d			
		β	18-25 weeks		β	18-25 weeks		β	18-25 weeks		
		(95% CI)			(95% CI)			(95% CI)			
PON1Q192											
QQ (TT)	226	1.7	-4.9	to 8.3	1.5	-3.2	to 6.1	1.3	-5.1	to 7.7	
QR (CT)	202	3.4	-3.9	to 10.7	2.3	-1.6	to 6.3	2.4	-4.5	to 9.3	
RR (CC)	46	0.4	-16.2	to 16.9	0.5	-11.1	to 12.1	-1.0	-16.6	to 14.7	
P interaction ^e				0.801			0.887			0.620	
PON1L55											
TT	65	4.5	-8.1	to 17.1	4.4	-5.2	to 14.0	4.1	-8.1	to 16.3	
AT	198	1.2	-6.0	to 8.4	0.1	-5.9	to 5.6	1.3	-5.9	to 8.2	
AA	211	0.8	-6.4	to 8.0	2.2	-1.3	to 5.8	-0.9	-7.8	to 5.9	
P interaction ^e				0.553			0.929			0.348	
PON1-108											
TT	90	7.5	-4.1	to 19.2	6.2	-2.1	to 14.4	5.7	-5.6	to 17.0	
CT	232	-0.6	-7.3	to 6.2	0.1	-3.7	to 4.0	-0.7	-7.1	to 5.8	
CC	152	1.8	-5.5	to 9.2	3.8	-1.3	to 8.9	0.4	-6.8	to 7.6	
P interaction ^e				0.353			0.864			0.279	
PON1-909											
GG	107	4.2	-5.9	to 14.4	4.2	-3.2	to 11.6	2.8	-7.0	to 12.5	
CG	229	0.1	-6.6	to 6.9	0.2	-3.6	to 4.0	0.1	-6.3	to 6.6	
CC	138	2.5	-5.3	to 10.4	4.1	-1.3	to 9.6	0.8	-6.9	to 8.5	
P interaction ^e				0.586			0.741			0.471	
PON1-161											
GG	37	19.3	0.1	to 38.6	4.5	-6.6	to 15.7	17.9	-0.8	to 36.6	
CG	172	-1.7	-8.9	to 5.6	1.2	-2.5	to 4.9	-1.6	-8.5	to 5.2	
CC	265	3.2	-3.2	to 9.5	2.8	-1.9	to 7.5	2.2	-4.0	to 8.4	
P interaction ^e				0.938			0.882			0.977	

a. Adjusted for child sex, maternal age, ethnicity (Dutch, other-western, and non-western), and education (low, intermediate, and high).

b. Total dialkyl phosphates is the sum of DEDTP, DETP, DEP, DMDTP, DMTP and DMP.

c. Diethyl alkyl phosphates is the sum of DEDTP, DETP and DEP.

d. Dimethyl alkyl phosphates is the sum of DMDTP, DMTP and DMP.

e. P-value based on interaction where the PON-1 type was treated as an ordinal variable.

Table S10. Difference in child sex, maternal age, ethnicity, and educational level adjusted child nonverbal IQ test score at age 6 years (and 95% confidence interval) per log10 nmol/g creatinine increase in maternal (>25 weeks) urine dialkyl phosphate metabolite concentration by **PON1 type** (N=474).

	N	Adjusted models ^a											
		Dialkyl phosphates (total) ^b				Diethyl alkyl phosphates ^c				Dimethyl alkyl phosphates ^d			
		β	(95% CI)		β	(95% CI)		β	(95% CI)				
PON1Q192													
QQ (TT)	226	-7.1	-13.6	to	-0.6	-0.5	-5.5	to	4.5	-7.3	-13.6	to	-0.9
QR (CT)	202	2.8	-3.9	to	9.4	2.7	-3.1	to	8.5	2.3	-3.9	to	8.5
RR (CC)	46	-5.4	-20.0	to	9.3	0.4	-9.2	to	9.9	-7.7	-23.2	to	7.8
P interaction ^e					0.548				0.849				0.637
PON1L55													
TT	65	-3.3	-15.3	to	8.8	-3.5	-13.3	to	6.4	-1.7	-13.1	to	9.7
AT	198	-5.1	-12.6	to	2.4	2.1	-18.1	to	8.2	-5.7	-18.1	to	1.4
AA	211	-0.1	-6.1	to	5.9	-0.4	-5.2	to	4.4	-0.2	-6.0	to	5.7
P interaction ^e					0.468				0.947				0.528
PON1-108													
TT	90	-5.5	-17.5	to	6.6	3.5	-5.9	to	12.8	-6.5	-17.7	to	4.8
CT	232	-1.3	-7.8	to	5.2	-0.3	-5.5	to	4.8	-1.4	-7.7	to	4.8
CC	152	-1.7	-8.3	to	5.0	1.0	-4.6	to	6.6	-1.7	-8.0	to	4.6
P interaction ^e					0.566				0.980				0.481
PON1-909													
GG	107	-7.1	-18.1	to	3.8	-0.6	-9.0	to	7.7	-7.3	-17.5	to	2.9
CG	229	-0.8	-7.2	to	5.6	1.3	-3.8	to	6.4	-1.2	-7.4	to	5.0
CC	138	-1.4	-8.5	to	5.7	0.4	-5.7	to	6.4	-1.4	-8.2	to	5.4
P interaction ^e					0.495				0.769				0.442
PON1-161													
GG	37	-0.4	-15.8	to	15.0	-4.0	-17.0	to	8.9	1.0	-14.2	to	16.3
CG	172	-2.5	-9.5	to	4.5	3.1	-2.2	to	8.3	-3.5	-10.2	to	3.2
CC	265	-3.5	-9.4	to	2.5	-1.2	-6.2	to	3.8	-3.3	-9.0	to	2.3
P interaction ^e					0.828				0.805				0.831

a. Adjusted for child sex, maternal age, ethnicity (Dutch, other-western, and non-western), and education (low, intermediate, and high).

b. Total dialkyl phosphates is the sum of DEDTP, DETP, DEP, DMDTP, DMTP and DMP.

c. Diethyl alkyl phosphates is the sum of DEDTP, DETP and DEP.

d. Dimethyl alkyl phosphates is the sum of DMDTP, DMTP and DMP.

e. P-value based on interaction where the PON-1 type was treated as an ordinal variable.

Table S11. Difference in child sex, maternal age, ethnicity, and educational level adjusted child nonverbal IQ test score at age 6 years (and 95% confidence interval) per log10 nmol/g creatinine increase in maternal (average pregnancy) urine dialkyl phosphate metabolite concentration by PON1 type (N=474).

	N	Adjusted models ^a											
		Dialkyl phosphates (total) ^b				Diethyl alkyl phosphates ^c				Dimethyl alkyl phosphates ^d			
		Averaged across pregnancy				Averaged across pregnancy				Averaged across pregnancy			
		β	(95% CI)		β	(95% CI)		β	(95% CI)				
PON1Q192													
QQ (TT)	226	-3.4	-12.4	to	5.5	2.6	-3.9	to	9.2	-4.7	-13.2	to	3.8
QR (CT)	202	2.7	-6.2	to	11.5	6.0	-1.8	to	13.8	2.0	-6.3	to	10.3
RR (CC)	46	-5.0	-24.3	to	14.3	1.2	-12.1	to	14.5	-6.9	-26.6	to	12.7
P interaction ^e					0.966				0.988				0.970
PON1L55													
TT	65	-1.2	-18.3	to	15.9	1.0	-11.0	to	13.1	-0.8	-17.0	to	15.5
AT	198	-3.6	-13.6	to	6.4	3.5	-18.2	to	11.3	-4.7	-18.2	to	4.8
AA	211	-0.3	-8.3	to	7.6	2.6	-4.0	to	9.3	-1.0	-8.7	to	6.6
P interaction ^e					0.805				0.977				0.823
PON1-108													
TT	90	-3.2	-18.0	to	11.6	5.7	-4.8	to	16.1	-6.2	-20.5	to	8.0
CT	232	0.3	-8.7	to	9.3	2.9	-4.2	to	10.0	-0.5	-9.1	to	8.1
CC	152	-1.3	-10.2	to	7.5	2.7	-4.8	to	10.2	-1.5	-10.0	to	7.0
P interaction ^e					0.852				0.659				0.930
PON1-909													
GG	107	-4.6	-18.2	to	9.0	3.5	-6.1	to	13.0	-6.5	-19.5	to	6.6
CG	229	1.1	-7.6	to	9.8	3.0	-4.1	to	10.1	0.2	-8.1	to	8.5
CC	138	-0.8	-10.4	to	8.9	4.2	-3.6	to	12.1	-1.2	-10.4	to	8.0
P interaction ^e					0.994				0.984				0.849
PON1-161													
GG	37	7.5	-11.2	to	26.2	3.1	-14.3	to	20.5	8.7	-9.0	to	26.5
CG	172	-4.3	-13.3	to	4.8	1.7	-5.9	to	9.3	-4.6	-13.0	to	3.9
CC	265	-0.9	-9.4	to	7.5	4.1	-2.3	to	10.4	-2.4	-10.5	to	5.7
P interaction ^e					0.910				0.598				0.668

a. Adjusted for child sex, maternal age, ethnicity (Dutch, other-western, and non-western), and education (low, intermediate, and high).

b. Total dialkyl phosphates is the sum of DEDTP, DETP, DEP, DMDTP, DMTP and DMP.

c. Diethyl alkyl phosphates is the sum of DEDTP, DETP and DEP.

d. Dimethyl alkyl phosphates is the sum of DMDTP, DMTP and DMP.

e. P-value based on interaction where the PON-1 type was treated as an ordinal variable.

Table S12. Difference in child sex, maternal age, and educational level adjusted child nonverbal IQ test score at age 6 years (and 95% confidence interval) per log10 nmol/g creatinine increase in maternal (<18 weeks) urine dialkyl phosphate metabolite concentration in Dutch women, by PON1 type (N=277).

		N	Adjusted models ^a											
			Dialkyl phosphates (total) ^b <18 weeks			Diethyl alkyl phosphates ^c <18 weeks			Dimethyl alkyl phosphates ^d <18 weeks					
			β	(95% CI)		β	(95% CI)		β	(95% CI)				
PON1Q192														
	QQ (TT)	226	0.3	-7.9	to	8.4	5.5	-1.3	to	12.3	-1.6	-9.3	to	6.2
	QR (CT)	202	-3.3	-12.4	to	5.7	-4.5	-8.7	to	-0.2	-2.7	-11.2	to	5.9
	RR (CC)	46	-8.0	-42.0	to	26.1	0.2	-16.3	to	16.7	-11.2	-40.6	to	18.1
	P interaction ^e					0.768				0.104				0.921
PON1L55														
	TT	65	-0.4	-16.5	to	15.7	-0.8	-13.5	to	11.9	-0.7	-16.2	to	14.9
	AT	198	-0.4	-10.0	to	9.2	-0.2	-18.9	to	6.6	-1.4	-18.9	to	7.6
	AA	211	-5.4	-14.6	to	3.8	-3.2	-7.6	to	1.2	-5.9	-14.6	to	2.8
	P interaction ^e					0.579				0.502				0.572
PON1-108														
	TT	90	-5.8	-20.3	to	8.7	0.2	-8.2	to	8.5	-8.5	-22.4	to	5.4
	CT	232	1.6	-7.3	to	10.5	1.3	-6.2	to	8.7	1.3	-7.1	to	9.8
	CC	152	-5.3	-15.2	to	4.6	-3.9	-8.4	to	0.7	-5.1	-14.4	to	4.3
	P interaction ^e					0.715				0.280				0.987
PON1-909														
	GG	107	-4.7	-18.9	to	9.5	0.0	-8.1	to	8.1	-7.2	-21.0	to	6.5
	CG	229	3.6	-4.9	to	12.2	1.5	-6.0	to	9.1	3.5	-4.5	to	11.5
	CC	138	-8.1	-18.6	to	2.3	-3.9	-8.5	to	0.7	-8.4	-18.3	to	1.6
	P interaction ^e					0.533				0.295				0.717
PON1-161														
	GG	37	-2.3	-37.8	to	33.3	17.6	-25.4	to	60.6	0.8	-29.1	to	30.8
	CG	172	-1.3	-10.1	to	7.6	2.0	-5.2	to	9.2	-2.0	-10.4	to	6.4
	CC	265	-2.8	-11.1	to	5.4	-3.4	-7.5	to	0.6	-3.6	-11.4	to	4.2
	P interaction ^e					0.772				0.105				0.642

a. Adjusted for child sex, maternal age, and maternal education (low, intermediate, and high).

b. Total dialkyl phosphates is the sum of DEDTP, DETP, DEP, DMDTP, DMTP and DMP.

c. Diethyl alkyl phosphates is the sum of DEDTP, DETP and DEP.

d. Dimethyl alkyl phosphates is the sum of DMDTP, DMTP and DMP.

e. P-value based on interaction where the PON-1 type was treated as an ordinal variable.

Table S13. Difference in maternal age, child sex, and educational level adjusted child nonverbal IQ test score at age 6 years (and 95% confidence interval) per log10 nmol/g creatinine increase in maternal (18-25 weeks) urine dialkyl phosphate metabolite concentration in Dutch women, by PON1 type (N=277).

		N	Adjusted models ^a								
			Dialkyl phosphates (total) ^b			Diethyl alkyl phosphates ^c			Dimethyl alkyl phosphates ^d		
			18-25 weeks			18-25 weeks			18-25 weeks		
		β	(95% CI)	β	(95% CI)	β	(95% CI)				
PON1Q192											
	QQ (TT)	226	1.5	-7.3 to 10.3	1.2	-4.9 to 7.3	1.2	-7.5 to 9.9			
	QR (CT)	202	4.0	-6.0 to 14.0	2.1	-2.6 to 6.8	3.1	-6.2 to 12.5			
	RR (CC)	46	1.0	-40.0 to 42.0	-0.2	-22.6 to 22.3	0.2	-42.8 to 43.3			
	P interaction ^e			0.723		0.642		0.820			
PON1L55											
	TT	65	13.2	-4.4 to 30.9	8.3	-4.3 to 20.8	12.3	-6.1 to 30.7			
	AT	198	1.3	-8.4 to 10.9	-0.2	-10.3 to 7.2	1.8	-10.3 to 11.2			
	AA	211	0.8	-9.8 to 11.3	2.1	-2.3 to 6.5	-0.9	-10.8 to 9.0			
	P interaction ^e			0.417		0.922		0.301			
PON1-108											
	TT	90	1.9	-12.5 to 16.4	3.1	-7.2 to 13.5	1.1	-13.3 to 15.5			
	CT	232	2.9	-6.7 to 12.4	1.1	-3.2 to 5.3	2.3	-6.9 to 11.5			
	CC	152	-1.3	-12.9 to 10.3	3.5	-4.9 to 11.9	-2.2	-13.3 to 8.9			
	P interaction ^e			0.422		0.999		0.365			
PON1-909											
	GG	107	3.4	-10.3 to 17.2	4.3	-5.4 to 14.0	2.4	-11.0 to 15.7			
	CG	229	3.5	-5.7 to 12.6	0.9	-3.3 to 5.0	3.7	-5.2 to 12.6			
	CC	138	-1.7	-14.6 to 11.1	3.5	-5.8 to 12.9	-3.1	-15.2 to 9.0			
	P interaction ^e			0.403		0.816		0.349			
PON1-161											
	GG	37	13.9	-25.1 to 53.0	1.4	-25.9 to 28.7	14.0	-21.5 to 49.5			
	CG	172	-6.4	-15.9 to 3.1	0.6	-3.4 to 4.7	-6.2	-15.3 to 3.0			
	CC	265	7.6	-1.2 to 16.5	4.8	-1.8 to 11.4	6.8	-1.9 to 15.4			
	P interaction ^e			0.118		0.287		0.134			

a. Adjusted for child sex, maternal age, and education (low, intermediate, and high).

b. Total dialkyl phosphates is the sum of DEDTP, DETP, DEP, DMDTP, DMTP and DMP.

c. Diethyl alkyl phosphates is the sum of DEDTP, DETP and DEP.

d. Dimethyl alkyl phosphates is the sum of DMDTP, DMTP and DMP.

e. P-value based on interaction where the PON-1 type was treated as an ordinal variable.

Table S14. Difference in child sex, maternal age, and educational level adjusted child nonverbal IQ test score at age 6 years (and 95% confidence interval) per log10 nmol/g creatinine increase in maternal (>25 weeks) urine dialkyl phosphate metabolite concentration in Dutch women, by PON1 type (N=277).

	N	Adjusted models ^a											
		Dialkyl phosphates (total) ^b			Diethyl alkyl phosphates ^c			Dimethyl alkyl phosphates ^d					
		β	(95% CI)		β	(95% CI)		β	(95% CI)				
PON1Q192													
QQ (TT)	226	-5.9	-15.3	to	3.6	-0.9	-8.1	to	6.2	-6.6	-15.6	to	2.5
QR (CT)	202	1.7	-7.2	to	10.6	3.4	-4.4	to	11.2	1.0	-7.4	to	9.3
RR (CC)	46	-14.4	-44.9	to	16.1	-3.2	-17.5	to	11.0	-23.1	-66.5	to	20.3
P interaction ^e					0.541				0.592				0.626
PON1L55													
TT	65	-6.4	-23.5	to	10.6	8.7	-7.4	to	24.7	-7.7	-22.8	to	7.4
AT	198	-3.8	-14.9	to	7.3	1.7	-27.5	to	10.1	-4.7	-27.5	to	5.8
AA	211	1.1	-7.4	to	9.7	-0.6	-7.5	to	6.2	1.0	-7.2	to	9.2
P interaction ^e					0.500				0.302				0.355
PON1-108													
TT	90	-11.2	-27.9	to	5.5	8.2	-5.7	to	22.1	-13.3	-28.5	to	2.0
CT	232	4.2	-5.2	to	13.6	0.5	-6.3	to	7.3	3.1	-5.9	to	12.2
CC	152	-2.2	-12.2	to	7.9	-1.2	-10.0	to	7.5	-1.4	-10.8	to	8.1
P interaction ^e					0.782				0.238				0.480
PON1-909													
GG	107	-12.1	-27.5	to	3.4	3.7	-8.7	to	16.1	-13.4	-27.6	to	0.8
CG	229	5.3	-3.7	to	14.3	2.2	-4.5	to	8.9	4.1	-4.6	to	12.7
CC	138	-3.6	-14.4	to	7.1	-4.3	-13.9	to	5.4	-2.5	-12.5	to	7.6
P interaction ^e					0.760				0.247				0.479
PON1-161													
GG	37	-5.1	-43.1	to	33.0	-10.8	-39.0	to	17.5	-2.8	-41.7	to	36.1
CG	172	-5.1	-13.9	to	3.6	-0.7	-7.7	to	6.3	-5.7	-14.1	to	2.7
CC	265	2.2	-6.8	to	11.1	3.4	-3.7	to	10.5	1.0	-7.4	to	9.4
P interaction ^e					0.267				0.145				0.342

a. Adjusted for child sex, maternal age, and education (low, intermediate, and high).

b. Total dialkyl phosphates is the sum of DEDTP, DETP, DEP, DMDTP, DMTP and DMP.

c. Diethyl alkyl phosphates is the sum of DEDTP, DETP and DEP.

d. Dimethyl alkyl phosphates is the sum of DMDTP, DMTP and DMP.

e. P-value based on interaction where the PON-1 type was treated as an ordinal variable.

Table S15. Difference in child sex, maternal age, and educational level adjusted child nonverbal IQ test score at age 6 years (and 95% confidence interval) per log10 nmol/g creatinine increase in maternal (average pregnancy) urine dialkyl phosphate metabolite concentration in Dutch women, by PON1 type (N=277).

	N	Adjusted models ^a											
		Dialkyl phosphates (total) ^b				Diethyl alkyl phosphates ^c				Dimethyl alkyl phosphates ^d			
		Averaged across pregnancy				Averaged across pregnancy				Averaged across pregnancy			
		β	(95% CI)		β	(95% CI)		β	(95% CI)				
PON1Q192													
QQ (TT)	226	-3.4	-16.7	to	9.8	3.6	-5.6	to	12.8	-5.7	-18.3	to	6.9
QR (CT)	202	2.7	-9.8	to	15.1	7.2	-3.1	to	17.4	1.9	-9.7	to	13.4
RR (CC)	46	-15.2	-57.1	to	26.8	-1.1	-22.9	to	20.8	-22.7	-72.4	to	27.0
P interaction ^e					0.716				0.636				0.708
PON1L55													
TT	65	-4.2	-32.9	to	24.6	7.8	-10.8	to	26.4	-8.4	-36.7	to	20.0
AT	198	-0.4	-15.1	to	14.4	4.0	-29.4	to	14.6	-1.5	-29.4	to	12.2
AA	211	-0.5	-12.7	to	11.7	5.8	-4.0	to	15.5	-1.9	-13.4	to	9.6
P interaction ^e					0.961				0.988				0.900
PON1-108													
TT	90	-9.7	-30.9	to	11.5	7.2	-7.0	to	21.5	-13.4	-33.2	to	6.4
CT	232	7.3	-6.6	to	21.2	5.1	-4.6	to	14.8	5.8	-7.6	to	19.1
CC	152	-3.8	-17.4	to	9.8	2.2	-9.6	to	14.0	-3.6	-16.2	to	9.0
P interaction ^e					0.807				0.409				0.912
PON1-909													
GG	107	-9.1	-29.4	to	11.2	7.5	-5.8	to	20.9	-12.1	-31.1	to	7.0
CG	229	10.6	-2.5	to	23.6	4.3	-5.4	to	13.9	9.3	-3.2	to	21.8
CC	138	-7.0	-21.6	to	7.7	2.4	-10.1	to	15.0	-6.7	-20.3	to	6.8
P interaction ^e					0.706				0.439				0.928
PON1-161													
GG	37	-1.0	-46.1	to	44.0	-5.1	-52.8	to	42.6	2.9	-35.5	to	41.2
CG	172	-8.6	-21.5	to	4.4	0.1	-9.7	to	9.8	-9.0	-21.1	to	3.2
CC	265	6.1	-6.4	to	18.7	8.8	-0.3	to	17.8	3.8	-8.1	to	15.7
P interaction ^e					0.233				0.141				0.368

a. Adjusted for child sex, maternal age, education (low, intermediate and high).

b. Total dialkyl phosphates is the sum of DEDTP, DETP, DEP, DMDTP, DMTP and DMP.

c. Diethyl alkyl phosphates is the sum of DEDTP, DETP and DEP.

d. Dimethyl alkyl phosphates is the sum of DMDTP, DMTP and DMP.

e. P-value based on interaction where the PON-1 type was treated as an ordinal variable.

Table S16. Concentrations <LOD substituted with LOD/ $\sqrt{2}$: Difference in child nonverbal IQ test score at age 6 years (and 95% confidence interval) per log₁₀ nmol/g creatinine increase in maternal urine dialkyl phosphate metabolite concentration ^a, by timing of pregnancy urine sampling and degree of adjustment (N=708).

Dialkyl Phosphate Type	Type of adjustment									
	β	None (95% CI)		β	Adjusted ^b (95% CI)		β	Mutually adjusted ^c (95% CI)		
Dialkyl phosphates (total) ^d										
< 18 weeks' gestation	-0.6	-4.1	to 2.9	-1.9	-5.3	to 1.5	-1.8	-5.3	to 1.7	
18 – 25 weeks' gestation	3.2	-0.6	to 7.0	0.9	-2.9	to 4.7	2.6	-1.4	to 6.7	
> 25 weeks' gestation	-0.8	-4.5	to 2.8	-3.9	-7.5	to -0.3	-4.3	-8.1	to -0.6	
Mean of three urines	0.6	-4.4	to 5.5	-2.5	-7.4	to 2.4				
Diethyl alkyl phosphates ^e										
< 18 weeks' gestation	2.5	-0.4	to 5.5	0.5	-2.4	to 3.4	0.5	-2.5	to 3.5	
18 – 25 weeks' gestation	2.7	-0.2	to 5.7	0.4	-2.5	to 3.3	0.4	-2.7	to 3.5	
> 25 weeks' gestation	2.6	-0.4	to 5.5	-0.3	-3.3	to 2.6	-0.5	-3.5	to 2.5	
Mean of three urines	4.3	0.5	to 8.2	1.0	-2.9	to 4.8				
Dimethyl alkyl phosphates ^f										
< 18 weeks' gestation	-1.6	-4.9	to 1.8	-2.4	-5.7	to 0.8	-2.3	-5.7	to 1.0	
18 – 25 weeks' gestation	2.7	-1.0	to 6.4	0.7	-2.9	to 4.3	2.4	-1.4	to 6.2	
> 25 weeks' gestation	-1.5	-5.0	to 1.9	-4.1	-7.5	to -0.6	-4.3	-7.9	to -0.8	
Mean of three urines	-0.6	-5.4	to 4.1	-3.0	-7.7	to 1.7				

a. Values below the limit of detection (LOD) substituted by the LOD/ $\sqrt{2}$.

b. Adjusted for child sex, maternal age, ethnicity (Dutch, other-western, and non-western), education (low, intermediate, and high), income (low, middle, and high), marital status, maternal alcohol consumption (no alcohol consumption during pregnancy, alcohol consumption until pregnancy was known, occasional alcohol consumption during pregnancy, and frequent alcohol consumption during pregnancy), maternal non-verbal IQ, BMI categories (<18.5, 18.5-25, 25-30, and 30+), height of the mother, parity categories (0, 1, and 2+), IT-Home quartiles, and smoking categories (no smoking during pregnancy, smoked until pregnancy was known, and smoked during pregnancy).

c. Adjusted model with the inclusion of the three exposures in one model.

d. Total dialkyl phosphates is the sum of DEDTP, DETP, DEP, DMDTP, DMTP and DMP.

e. Diethyl alkyl phosphates is the sum of DEDTP, DETP and DEP.

f. Dimethyl alkyl phosphates is the sum of DMDTP, DMTP and DMP.

Table S17. Creatinine adjustment as separate covariate: Difference in child nonverbal IQ test score at age 6 years (and 95% confidence interval) per log₁₀ nmol/g creatinine increase in maternal urine dialkyl phosphate metabolite concentration, by timing of pregnancy urine sampling and degree of adjustment (N=708).

Dialkyl Phosphate Type	Type of adjustment					
	None ^a		Adjusted ^b		Mutually adjusted ^c	
	β	(95% CI)	β	(95% CI)	β	(95% CI)
Dialkyl phosphates (total) ^d						
< 18 weeks' gestation	-1.8	-5.1 to 1.5	-2.4	-5.5 to 0.8	-2.5	-5.7 to 0.7
18 – 25 weeks' gestation	3.2	-0.3 to 6.6	0.9	-2.5 to 4.3	2.7	-0.8 to 6.3
> 25 weeks' gestation	-1.8	-5.3 to 1.6	-3.9	-7.3 to -0.5	-4.5	-8.0 to -1.0
Mean of three urines	-0.7	-5.5 to 4.1	-2.6	-7.3 to 2.1		
Diethyl alkyl phosphates ^e						
< 18 weeks' gestation	-0.4	-2.8 to 2.1	-1.6	-4.0 to 0.9	-1.6	-4.1 to 0.8
18 – 25 weeks' gestation	2.3	-0.1 to 4.8	0.6	-1.9 to 3.0	1.0	-1.5 to 3.5
> 25 weeks' gestation	1.6	-0.9 to 4.1	-0.5	-3.0 to 2.0	-0.6	-3.1 to 2.0
Mean of three urines	3.0	-0.6 to 6.7	0.5	-3.2 to 4.1		
Dimethyl alkyl phosphates ^f						
< 18 weeks' gestation	-2.5	-5.7 to 0.6	-2.8	-5.8 to 0.2	-2.9	-6.0 to 0.1
18 – 25 weeks' gestation	2.7	-0.6 to 6.1	0.7	-2.6 to 4.0	2.6	-0.8 to 6.0
> 25 weeks' gestation	-2.4	-5.7 to 0.9	-4.0	-7.3 to -0.8	-4.6	-7.9 to -1.3
Mean of three urines	-1.9	-6.6 to 2.7	-3.3	-7.8 to 1.3		

a. "None" adjusted model is adjusted for creatinine concentrations.

b. Adjusted for creatinine concentrations, child sex, maternal age, ethnicity (Dutch, other-western, and non-western), education (low, intermediate, and high), income (low, middle, and high), marital status, maternal alcohol consumption (no alcohol consumption during pregnancy, alcohol consumption until pregnancy was known, occasional alcohol consumption during pregnancy, and frequent alcohol consumption during pregnancy), maternal non-verbal IQ, BMI categories (<18.5, 18.5-25, 25-30, and 30+), height of the mother, parity categories (0, 1, and 2+), IT-Home quartiles, and smoking categories (no smoking during pregnancy, smoked until pregnancy was known, and smoked during pregnancy).

c. Adjusted model with the inclusion of the three exposures in one model.

d. Total dialkyl phosphates is the sum of DEDTP, DETP, DEP, DMDTP, DMTP and DMP.

e. Diethyl alkyl phosphates is the sum of DEDTP, DETP and DEP.

f. Dimethyl alkyl phosphates is the sum of DMDTP, DMTP and DMP.

Table S18. Removal of extreme values: Difference in child nonverbal IQ test score at age 6 years (and 95% confidence interval) per log₁₀ nmol/g creatinine increase in maternal urine dialkyl phosphate metabolite concentration, by timing of pregnancy urine sampling and degree of adjustment.

Dialkyl Phosphate Type	Type of adjustment					
	None		Adjusted ^a		Mutually adjusted ^b	
	β	(95% CI)	β	(95% CI)	β	(95% CI)
Dialkyl phosphates (total) ^c						
< 18 weeks' gestation (n=639)	1.2	-2.1 to 4.4	-0.5	-3.7 to 2.7	-0.5	-3.6 to 2.7
18 – 25 weeks' gestation (n=638)	2.4	-1.2 to 5.9	0.6	-2.9 to 4.2	2.9	-0.7 to 6.4
> 25 weeks' gestation (n=640)	0.3	-3.0 to 3.7	-2.8	-6.2 to 0.6	-2.8	-6.2 to 0.6
Mean of three urines (n=639)	3.5	-1.2 to 8.1	0.4	-4.4 to 5.1		
Diethyl alkyl phosphates ^d						
< 18 weeks' gestation (n=638)	2.1	-0.7 to 4.9	-0.2	-3.0 to 2.6	0.7	-2.0 to 3.4
18 – 25 weeks' gestation (n=639)	1.5	-0.7 to 3.8	0.2	-2.0 to 2.5	0.0	-2.3 to 2.3
> 25 weeks' gestation (n=640)	1.8	-0.4 to 4.1	-0.3	-2.6 to 2.0	-1.2	-3.5 to 1.0
Mean of three urines (n=638)	2.1	-1.4 to 5.7	-1.0	-4.7 to 2.6		
Dimethyl alkyl phosphates ^e						
< 18 weeks' gestation (n=640)	0.5	-2.6 to 3.6	-0.8	-3.8 to 2.3	-0.9	-3.9 to 2.1
18 – 25 weeks' gestation (n=638)	1.8	-1.6 to 5.2	0.5	-2.9 to 3.9	2.5	-0.9 to 5.9
> 25 weeks' gestation (n=640)	-0.2	-3.4 to 3.0	-2.7	-6.0 to 0.5	-2.9	-6.2 to 0.4
Mean of three urines (n=638)	2.3	-2.2 to 6.8	0.0	-4.5 to 4.6		

a. Adjusted for child sex, maternal age, ethnicity (Dutch, other-western, and non-western), education (low, intermediate, and high), income (low, middle, and high), marital status, maternal alcohol consumption (no alcohol consumption during pregnancy, alcohol consumption until pregnancy was known, occasional alcohol consumption during pregnancy, and frequent alcohol consumption during pregnancy), maternal non-verbal IQ, BMI categories (<18.5, 18.5-25, 25-30, and 30+), height of the mother, parity categories (0, 1, and 2+), IT-Home quartiles, and smoking categories (no smoking during pregnancy, smoked until pregnancy was known, and smoked during pregnancy).

b. Adjusted model with the inclusion of the three exposures in one model.

c. Total dialkyl phosphates is the sum of DEDTP, DETP, DEP, DMDTP, DMTP and DMP.

d. Diethyl alkyl phosphates is the sum of DEDTP, DETP and DEP.

e. Dimethyl alkyl phosphates is the sum of DMDTP, DMTP and DMP.

Table S19. Adjustment for prenatal fruit and vegetable consumption: Difference in child nonverbal IQ test score at age 6 years (and 95% confidence interval) per log10 nmol/g creatinine increase in maternal urine dialkyl phosphate metabolite concentration, by timing of pregnancy urine sampling and degree of adjustment (N=708).

Dialkyl Phosphate Type	Type of adjustment									
	β	None (95% CI)		β	Adjusted ^a (95% CI)		β	Mutually adjusted ^b (95% CI)		
Dialkyl phosphates (total) ^c										
< 18 weeks' gestation	-0.7	-4.1	to 2.8	-2.5	-5.9	to 1.0	-2.4	-5.9	to 1.2	
18 – 25 weeks' gestation	3.2	-0.6	to 7.0	0.8	-3.1	to 4.6	2.5	-1.5	to 6.6	
> 25 weeks' gestation	-0.8	-4.4	to 2.8	-4.0	-7.6	to -0.3	-4.3	-8.1	to -0.5	
Mean of three urines	0.6	-4.3	to 5.5	-2.9	-7.9	to 2.0				
Diethyl alkyl phosphates ^d										
< 18 weeks' gestation	0.1	-2.4	to 2.6	-1.6	-4.1	to 0.9	-1.7	-4.3	to 0.8	
18 – 25 weeks' gestation	2.1	-0.4	to 4.7	0.5	-2.0	to 3.0	0.9	-1.7	to 3.5	
> 25 weeks' gestation	2.2	-0.3	to 4.7	-0.1	-2.7	to 2.4	-0.1	-2.8	to 2.5	
Mean of three urines	4.4	0.6	to 8.2	0.9	-3.0	to 4.8				
Dimethyl alkyl phosphates ^e										
< 18 weeks' gestation	-1.6	-4.9	to 1.7	-3.1	-6.3	to 0.2	-2.9	-6.2	to 0.4	
18 – 25 weeks' gestation	2.6	-1.0	to 6.3	0.5	-3.2	to 4.1	2.2	-1.6	to 6.0	
> 25 weeks' gestation	-1.6	-5.0	to 1.9	-4.2	-7.6	to -0.7	-4.3	-7.9	to -0.8	
Mean of three urines	-0.6	-5.4	to 4.1	-3.5	-8.3	to 1.3				

a. Adjusted for child sex, maternal age, ethnicity (Dutch, other-western, and non-western), education (low, intermediate, and high), income (low, middle, and high), marital status, maternal alcohol consumption (no alcohol consumption during pregnancy, alcohol consumption until pregnancy was known, occasional alcohol consumption during pregnancy, and frequent alcohol consumption during pregnancy), maternal non-verbal IQ, BMI categories (<18.5, 18.5-25, 25-30, and 30+), height of the mother, parity categories (0, 1, and 2+), IT-Home quartiles, smoking categories (no smoking during pregnancy, smoked until pregnancy was known, and smoked during pregnancy), fruit consumption in grams, vegetables consumption in grams, and energy intake in kcal.

b. Adjusted model with the inclusion of the three exposures in one model.

c. Total dialkyl phosphates is the sum of DEDTP, DETP, DEP, DMDTP, DMTP and DMP.

d. Diethyl alkyl phosphates is the sum of DEDTP, DETP and DEP.

e. Dimethyl alkyl phosphates is the sum of DMDTP, DMTP and DMP.

Table S20. Multiple informants model: Difference in child nonverbal IQ test score at age 6 years (and 95% confidence interval) per log10 nmol/g creatinine increase in maternal urine dialkyl phosphate metabolite concentration, by timing of pregnancy urine sampling (N=708).

Dialkyl Phosphate Type	Estimates based on the multiple informants approach ^a		
	β	(95% CI)	
Dialkyl phosphates (total) ^b			
< 18 weeks' gestation	-2.0	-5.3 to 1.4	
18 – 25 weeks' gestation	0.8	-2.9 to 4.5	
> 25 weeks' gestation	-4.0	-7.5 to -0.4	
p homogeneity ^c			0.049
Diethyl alkyl phosphates ^d			
< 18 weeks' gestation	-1.4	-3.9 to 1.0	
18 – 25 weeks' gestation	0.6	-1.9 to 3.0	
> 25 weeks' gestation	-0.2	-2.7 to 2.3	
p homogeneity ^c			0.722
Dimethyl alkyl phosphates ^e			
< 18 weeks' gestation	-2.5	-5.7 to 0.6	
18 – 25 weeks' gestation	0.6	-3.0 to 4.1	
> 25 weeks' gestation	-4.2	-7.5 to -0.8	
p homogeneity ^c			0.020

a. Adjusted for child sex, maternal age, ethnicity (Dutch, other-western, and non-western), education (low, intermediate, and high), income (low, middle, and high), marital status, maternal alcohol consumption (no alcohol consumption during pregnancy, alcohol consumption until pregnancy was known, occasional alcohol consumption during pregnancy, and frequent alcohol consumption during pregnancy), maternal non-verbal IQ, BMI categories (<18.5, 18.5-25, 25-30, and 30+), height of the mother, parity categories (0, 1, and 2+), IT-Home quartiles, and smoking categories (no smoking during pregnancy, smoked until pregnancy was known, and smoked during pregnancy).

b. Total dialkyl phosphates is the sum of DEDTP, DETP, DEP, DMDTP, DMTP and DMP.

c. Tests whether the exposure from different time points relates in the same manner to non-verbal IQ scores.

d. Diethyl alkyl phosphates is the sum of DEDTP, DETP and DEP.

e. Dimethyl alkyl phosphates is the sum of DMDTP, DMTP and DMP.

Table S21. Effect measure modification by maternal education: Difference in child nonverbal IQ test score at age 6 years (and 95% confidence interval) per log10 nmol/g creatinine increase in maternal urine dialkyl phosphate metabolite concentration, by timing of pregnancy urine sampling, degree of adjustment, and **maternal education level** (N=708).

Total Dialkyl phosphates ^a	Educational level						P interaction
	High		Middle		Low		
Type of adjustment	B	95%CI	B	95%CI	B	95%CI	
None							
< 18 weeks' gestation	0.0	-5.0 to 5.0	-6.1	-12.1 to -0.2	1.0	-6.8 to 8.9	0.836
18 – 25 weeks' gestation	2.0	-3.4 to 7.3	-1.4	-8.1 to 5.2	2.3	-6.5 to 11.0	0.796
> 25 weeks' gestation	-6.1	-11.2 to -1.0	-1.3	-7.4 to 4.8	-1.8	-10.2 to 6.6	0.341
Mean of three urines	-2.7	-9.8 to 4.5	-4.8	-13.2 to 3.5	1.2	-10.0 to 12.3	0.745
Adjusted ^b							
< 18 weeks' gestation	-1.2	-6.3 to 3.9	-7.3	-13.7 to -0.9	2.7	-6.7 to 12.1	0.675
18 – 25 weeks' gestation	1.3	-4.1 to 6.7	-1.1	-8.4 to 6.1	1.8	-9.3 to 12.8	0.944
> 25 weeks' gestation	-5.8	-11.0 to -0.7	-3.9	-10.6 to 2.8	-0.2	-10.6 to 10.2	0.241
Mean of three urines	-3.5	-10.8 to 3.9	-7.3	-16.5 to 1.9	3.4	-10.4 to 17.1	0.398
Mutually adjusted ^c							
< 18 weeks' gestation	-0.9	-6.1 to 4.3	-7.2	-13.8 to -0.7	2.5	-7.6 to 12.7	0.700
18 – 25 weeks' gestation	3.3	-2.3 to 8.9	1.7	-6.0 to 9.3	0.9	-11.3 to 13.2	0.986
> 25 weeks' gestation	-6.5	-11.9 to -1.2	-3.5	-10.5 to 3.4	-0.8	-11.8 to 10.1	0.257

a. Total dialkyl phosphates is the sum of DEDTP, DETP, DEP, DMDTP, DMTP and DMP.

b. Adjusted for child sex, maternal age, ethnicity (Dutch, other-western, and non-western), income (low, middle, and high), marital status, maternal alcohol consumption (no alcohol consumption during pregnancy, alcohol consumption until pregnancy was known, occasional alcohol consumption during pregnancy, and frequent alcohol consumption during pregnancy), maternal non-verbal IQ, BMI categories (<18.5, 18.5-25, 25-30, and 30+), height of the mother, parity categories (0, 1, and 2+), Home IT quartiles, and smoking categories (no smoking during pregnancy, smoked until pregnancy was known, and smoked during pregnancy).

c. Adjusted model with the inclusion of the three exposures in one model.

Table S22. Effect measure modification by child sex: Difference in child nonverbal IQ test score at age 6 years (and 95% confidence interval) per log₁₀ nmol/g creatinine increase in maternal urine dialkyl phosphate metabolite concentration, by timing of pregnancy urine sampling, degree of adjustment, and **child sex** (N=708).

Dialkyl phosphates (total) ^a	Child sex				P interaction
	Boys		Girls		
Type of adjustment	B	95%CI	B	95%CI	
None					
< 18 weeks' gestation	-0.4	-5.5 to 4.7	-1.1	-5.9 to 3.6	0.844
18 – 25 weeks' gestation	1.9	-3.6 to 7.3	4.5	-0.8 to 9.8	0.499
> 25 weeks' gestation	0.0	-5.4 to 5.4	-1.7	-6.5 to 3.1	0.651
Mean of three urines	0.5	-6.6 to 7.6	0.3	-6.4 to 7.1	0.976
Adjusted ^b					
< 18 weeks' gestation	-2.0	-7.2 to 3.2	-1.8	-6.3 to 2.8	0.840
18 – 25 weeks' gestation	-0.3	-5.9 to 5.2	2.1	-3.3 to 7.4	0.619
> 25 weeks' gestation	-3.0	-8.5 to 2.4	-5.3	-10.2 to -0.3	0.626
Mean of three urines	-2.6	-9.9 to 4.7	-2.7	-9.5 to 4.2	0.979
Mutually adjusted ^c					
< 18 weeks' gestation	-1.8	-7.3 to 3.7	-1.6	-6.2 to 3.0	0.751
18 – 25 weeks' gestation	0.9	-5.0 to 6.8	4.6	-1.0 to 10.2	0.550
> 25 weeks' gestation	-3.0	-8.6 to 2.7	-6.5	-11.7 to -1.3	0.566

a. Total dialkyl phosphates is the sum of DEDTP, DETP, DEP, DMDTP, DMTP and DMP.

b. Adjusted for maternal age, ethnicity categories (Dutch, other-western, and non-western), education (low, intermediate, and high), income (low, middle, and high), marital status, maternal alcohol consumption (no alcohol consumption during pregnancy, alcohol consumption until pregnancy was known, occasional alcohol consumption during pregnancy, and frequent alcohol consumption during pregnancy), maternal non-verbal IQ, BMI categories (<18.5, 18.5-25, 25-30, and 30+), height of the mother, parity categories (0, 1, and 2+), Home IT quartiles, and smoking categories (no smoking during pregnancy, smoked until pregnancy was known, and smoked during pregnancy).

c. Adjusted model with the inclusion of the three exposures in one model.

Table S23. Complete-case only model (with the exclusion of IT-Home score): Difference in child nonverbal IQ test score at age 6 years (and 95% confidence interval) per log₁₀ nmol/g creatinine increase in maternal urine dialkyl phosphate metabolite concentration, by timing of pregnancy urine sampling, and degree of adjustment, among mother-child pairs with complete covariate data.

Dialkyl Phosphate Type	Type of adjustment					
	None (n=708)		Adjusted (n=541) ^a		Mutually adjusted (n=541) ^b	
	β	(95% CI)	β	(95% CI)	β	(95% CI)
Dialkyl phosphates (total)^c						
< 18 weeks' gestation	-0.7	-4.2 to 2.8	-2.3	-6.1 to 1.5	-2.3	-6.2 to 1.6
18 – 25 weeks' gestation	3.2	-0.6 to 7.0	1.1	-3.3 to 5.4	2.7	-1.8 to 7.2
> 25 weeks' gestation	-0.9	-4.5 to 2.7	-3.9	-8.1 to 0.4	-4.2	-8.6 to 0.2
Mean of three urines	0.6	-4.4 to 5.5	-2.5	-8.1 to 3.2		
Diethyl alkyl phosphates^d						
< 18 weeks' gestation	0.1	-2.4 to 2.6	-2.0	-4.6 to 0.6	-2.2	-4.9 to 0.5
18 – 25 weeks' gestation	2.2	-0.4 to 4.7	1.1	-1.7 to 3.8	1.3	-1.5 to 4.2
> 25 weeks' gestation	2.2	-0.3 to 4.7	0.4	-2.9 to 3.7	0.4	-2.9 to 3.8
Mean of three urines	0.6	-4.4 to 5.5	1.4	-2.9 to 5.8		
Dimethyl alkyl phosphates^e						
< 18 weeks' gestation	-1.7	-5.0 to 1.6	-2.6	-6.3 to 1.0	-2.6	-6.2 to 1.1
18 – 25 weeks' gestation	2.6	-1.0 to 6.3	0.5	-3.6 to 4.6	2.1	-2.2 to 6.4
> 25 weeks' gestation	-1.6	-5.1 to 1.8	-4.3	-8.3 to -0.3	-4.5	-8.6 to -0.4
Mean of three urines	0.6	-4.4 to 5.5	-3.1	-8.6 to 2.3		

a. Adjusted for child sex, maternal age, ethnicity (Dutch, other-western, and non-western), education (low, intermediate, and high), income (low, middle, and high), marital status, maternal non-verbal IQ, maternal alcohol consumption (no alcohol consumption during pregnancy, alcohol consumption until pregnancy was known, occasional alcohol consumption during pregnancy, and frequent alcohol consumption during pregnancy), BMI categories (<18.5, 18.5-25, 25-30, and 30+), height of the mother, parity categories (0, 1, and 2+), and smoking categories (no smoking during pregnancy, smoked until pregnancy was known, and smoked during pregnancy).

b. Adjusted model with the inclusion of the three exposures in one model.

c. Total dialkyl phosphates is the sum of DEDTP, DETP, DEP, DMDTP, DMTP and DMP.

d. Diethyl alkyl phosphates is the sum of DEDTP, DETP and DEP.

e. Dimethyl alkyl phosphates is the sum of DMDTP, DMTP and DMP.

Table S24. Complete-case only model (with the inclusion of IT-Home score): Difference in child nonverbal IQ test score at age 6 years (and 95% confidence interval) per log₁₀ nmol/g creatinine increase in maternal urine dialkyl phosphate metabolite concentration, by timing of pregnancy urine sampling, and degree of adjustment, among mother-child pairs with complete covariate data.

Dialkyl Phosphate Type	Type of adjustment					
	None (n=708)		Adjusted (n=384) ^a		Mutually adjusted (n=384) ^b	
	β	(95% CI)	β	(95% CI)	β	(95% CI)
Dialkyl phosphates (total)^c						
< 18 weeks' gestation	-0.7	-4.2 to 2.8	-0.5	-5.1 to 4.0	-1.0	-5.7 to 3.6
18 – 25 weeks' gestation	3.2	-0.6 to 7.0	3.3	-1.7 to 8.4	4.4	-0.9 to 9.6
> 25 weeks' gestation	-0.9	-4.5 to 2.7	-2.5	-7.4 to 2.4	-3.4	-8.4 to 1.6
Mean of three urines	0.6	-4.4 to 5.5	0.9	-5.8 to 7.5		
Diethyl alkyl phosphates^d						
< 18 weeks' gestation	0.1	-2.4 to 2.6	-1.7	-4.6 to 1.3	-1.9	-4.8 to 1.1
18 – 25 weeks' gestation	2.2	-0.4 to 4.7	1.7	-1.5 to 4.8	1.9	-1.3 to 5.1
> 25 weeks' gestation	2.2	-0.3 to 4.7	0.1	-3.7 to 4.0	-0.1	-4.0 to 3.8
Mean of three urines	0.6	-4.4 to 5.5	0.9	-5.8 to 7.5		
Dimethyl alkyl phosphates^e						
< 18 weeks' gestation	-1.7	-5.0 to 1.6	-1.1	-5.5 to 3.4	-1.3	-5.8 to 3.1
18 – 25 weeks' gestation	2.6	-1.0 to 6.3	2.7	-2.2 to 7.5	3.6	-1.4 to 8.6
> 25 weeks' gestation	-1.6	-5.1 to 1.8	-2.7	-7.3 to 2.0	-3.3	-8.1 to 1.5
Mean of three urines	0.6	-4.4 to 5.5	0.9	-5.8 to 7.5		

a. Adjusted for child sex, maternal age, ethnicity (Dutch, other-western, and non-western), education (low, intermediate, and high), income (low, middle, and high), marital status, maternal non-verbal IQ, maternal alcohol consumption (no alcohol consumption during pregnancy, alcohol consumption until pregnancy was known, occasional alcohol consumption during pregnancy, and frequent alcohol consumption during pregnancy), BMI categories (<18.5, 18.5-25, 25-30, and 30+), height of the mother, parity categories (0, 1, and 2+), IT-Home quartiles, and smoking categories (no smoking during pregnancy, smoked until pregnancy was known, and smoked during pregnancy).

b. Adjusted model with the inclusion of the three exposures in one model.

c. Total dialkyl phosphates is the sum of DEDTP, DETP, DEP, DMDTP, DMTP and DMP.

d. Diethyl alkyl phosphates is the sum of DEDTP, DETP and DEP.

e. Dimethyl alkyl phosphates is the sum of DMDTP, DMTP and DMP.

Table S25. Excluding DEDTP (i.e., including only those metabolites with at least 80% of values >LOD): Difference in child nonverbal IQ test score at age 6 years (and 95% confidence interval) per log10 nmol/g creatinine increase in maternal urine dialkyl phosphate metabolite concentration, by timing of pregnancy urine sampling and degree of adjustment (N=708).

Dialkyl Phosphate Type	β	Type of adjustment							
		None		Adjusted ^a		Mutually adjusted ^b			
		(95% CI)		(95% CI)		(95% CI)			
Dialkyl phosphates (total) ^c									
< 18 weeks' gestation	-0.7	-4.2	to 2.8	-1.9	-5.3	to 1.5	-1.9	-5.3	to 1.6
18 – 25 weeks' gestation	3.2	-0.6	to 7.0	0.9	-2.9	to 4.7	2.6	-1.4	to 6.6
> 25 weeks' gestation	-0.8	-4.4	to 2.8	-3.9	-7.5	to -0.3	-4.3	-8.1	to -0.6
Mean of three urines	0.6	-4.3	to 5.5	-2.5	-7.4	to 2.4			
Diethyl alkyl phosphates ^d									
< 18 weeks' gestation	0.1	-2.4	to 2.6	-1.4	-3.9	to 1.0	-1.6	-4.1	to 0.9
18 – 25 weeks' gestation	2.1	-0.4	to 4.6	0.5	-2.0	to 3.0	0.9	-1.7	to 3.4
> 25 weeks' gestation	2.2	-0.3	to 4.7	-0.2	-2.8	to 2.3	-0.3	-2.8	to 2.3
Mean of three urines	4.4	0.6	to 8.2	1.0	-2.8	to 4.9			
Dimethyl alkyl phosphates ^e									
< 18 weeks' gestation	-1.6	-4.9	to 1.7	-2.5	-5.7	to 0.7	-2.3	-5.6	to 0.9
18 – 25 weeks' gestation	2.6	-1.0	to 6.3	0.7	-3.0	to 4.3	2.3	-1.4	to 6.1
> 25 weeks' gestation	-1.6	-5.0	to 1.9	-4.1	-7.5	to -0.7	-4.3	-7.9	to -0.8
Mean of three urines	-0.6	-5.4	to 4.1	-3.0	-7.7	to 1.7			

a. Adjusted for child sex, maternal age, ethnicity (Dutch, other-western, and non-western), education (low, intermediate, and high), income (low, middle, and high), marital status, maternal alcohol consumption (no alcohol consumption during pregnancy, alcohol consumption until pregnancy was known, occasional alcohol consumption during pregnancy, and frequent alcohol consumption during pregnancy), maternal non-verbal IQ, BMI categories (<18.5, 18.5-25, 25-30, and 30+), height of the mother, parity categories (0, 1, and 2+), IT-Home quartiles, and smoking categories (no smoking during pregnancy, smoked until pregnancy was known, and smoked during pregnancy).

b. Adjusted model with the inclusion of the three exposures in one model.

c. Total dialkyl phosphates is the sum of DETP, DEP, DMDTP, DMTP and DMP.

d. Diethyl alkyl phosphates is the sum of DETP and DEP.

e. Dimethyl alkyl phosphates is the sum of DMDTP, DMTP and DMP.

Table S26. Difference in **Mosaics** test score at age 6 years (and 95% confidence interval) per log₁₀ nmol/g creatinine increase in maternal urine dialkyl phosphate metabolite concentration, by timing of pregnancy urine sampling and degree of adjustment (N=708).

Dialkyl Phosphate Type	β	Type of adjustment							
		None		Adjusted ^a		Mutually adjusted ^b			
		(95% CI)		(95% CI)		(95% CI)			
Dialkyl phosphates (total)^c									
< 18 weeks' gestation	-1.3	-4.9	to 2.3	-3.1	-6.5	to 0.4	-3.0	-6.6	to 0.6
18 – 25 weeks' gestation	2.7	-1.2	to 6.7	0.1	-3.7	to 4.0	1.8	-2.3	to 5.9
> 25 weeks' gestation	0.2	-3.6	to 3.9	-3.3	-7.0	to 0.4	-3.3	-7.2	to 0.5
Mean of three urines	0.5	-4.7	to 5.6	-3.4	-8.5	to 1.6			
p homogeneity ^d									0.110
Diethyl alkyl phosphates^e									
< 18 weeks' gestation	0.5	-2.1	to 3.2	-1.2	-3.7	to 1.3	-1.5	-4.1	to 1.1
18 – 25 weeks' gestation	2.8	0.1	to 5.4	1.0	-1.5	to 3.6	1.2	-1.5	to 3.8
> 25 weeks' gestation	3.7	1.0	to 6.3	0.9	-1.7	to 3.4	0.8	-1.9	to 3.4
Mean of three urines	5.7	1.7	to 9.6	1.6	-2.3	to 5.6			
p homogeneity ^d									0.457
Dimethyl alkyl phosphates^f									
< 18 weeks' gestation	-2.2	-5.6	to 1.3	-3.6	-6.9	to -0.3	-3.4	-6.7	to 0.0
18 – 25 weeks' gestation	2.2	-1.6	to 6.1	0.0	-3.7	to 3.7	1.8	-2.0	to 5.7
> 25 weeks' gestation	-1.1	-4.7	to 2.5	-3.9	-7.4	to -0.4	-3.9	-7.6	to -0.3
Mean of three urines	-1.1	-6.0	to 3.9	-4.1	-9.0	to 0.7			
p homogeneity ^d									0.039

a. Adjusted for child sex, maternal age, ethnicity (Dutch, other-western and non-western), education (low, intermediate, and high), income (low, middle, and high), marital status, maternal alcohol consumption (no alcohol consumption during pregnancy, alcohol consumption until pregnancy was known, occasional alcohol consumption during pregnancy, and frequent alcohol consumption during pregnancy), maternal non-verbal IQ, BMI categories (<18.5, 18.5-25, 25-30, and 30+), height of the mother, parity categories (0, 1, and 2+), IT-Home quartiles, and smoking categories (no smoking during pregnancy, smoked until pregnancy was known, and smoked during pregnancy).

b. Adjusted model with the inclusion of the three exposures in one model.

c. Total dialkyl phosphates is the sum of DEDTP, DETP, DEP, DMDTP, DMTP and DMP.

d. Multiple-partial F test used to test whether exposure from different time points relates in the same manner to Mosaics scores.

e. Diethyl alkyl phosphates is the sum of DEDTP, DETP and DEP.

f. Dimethyl alkyl phosphates is the sum of DMDTP, DMTP and DMP.

Table S27. Difference in **Categories** test score at age 6 years (and 95% confidence interval) per log₁₀ nmol/g creatinine increase in maternal urine dialkyl phosphate metabolite concentration, by timing of pregnancy urine sampling and degree of adjustment (N=708).

Dialkyl Phosphate Type	β	Type of adjustment							
		None		Adjusted ^a		Mutually adjusted ^b			
		(95% CI)		(95% CI)		(95% CI)			
Dialkyl phosphates (total)^c									
< 18 weeks' gestation	0.6	-2.9	to 4.1	0.6	-2.9	to 4.2	0.4	-3.3	to 4.1
18 – 25 weeks' gestation	3.0	-0.8	to 6.8	2.4	-1.5	to 6.3	3.3	-0.9	to 7.4
> 25 weeks' gestation	-1.4	-4.9	to 2.2	-2.4	-6.1	to 1.4	-3.3	-7.2	to 0.6
Mean of three urines	1.2	-3.7	to 6.1	0.9	-4.2	to 6.0			
p homogeneity ^d									0.128
Diethyl alkyl phosphates^e									
< 18 weeks' gestation	-0.5	-3.0	to 2.1	-1.0	-3.6	to 1.5	-1.1	-3.7	to 1.5
18 – 25 weeks' gestation	1.1	-1.5	to 3.6	0.4	-2.2	to 3.0	0.8	-1.9	to 3.5
> 25 weeks' gestation	0.0	-2.6	to 2.5	-0.9	-3.6	to 1.7	-1.0	-3.7	to 1.7
Mean of three urines	1.7	-2.2	to 5.5	0.6	-3.4	to 4.6			
p homogeneity ^d									0.520
Dimethyl alkyl phosphates^f									
< 18 weeks' gestation	-0.1	-3.4	to 3.2	0.2	-3.2	to 3.5	0.1	-3.4	to 3.5
18 – 25 weeks' gestation	2.6	-1.0	to 6.3	2.0	-1.8	to 5.8	2.8	-1.2	to 6.7
> 25 weeks' gestation	-1.3	-4.8	to 2.1	-2.1	-5.7	to 1.5	-2.8	-6.5	to 0.9
Mean of three urines	0.8	-3.9	to 5.5	0.8	-4.1	to 5.7			
p homogeneity ^d									0.200

a. Adjusted for child sex, maternal age, ethnicity (Dutch, other-western and non-western), education (low, intermediate, and high), income (low, middle, and high), marital status, maternal alcohol consumption (no alcohol consumption during pregnancy, alcohol consumption until pregnancy was known, occasional alcohol consumption during pregnancy, and frequent alcohol consumption during pregnancy), maternal non-verbal IQ, BMI categories (<18.5, 18.5-25, 25-30, and 30+), height of the mother, parity categories (0, 1, and 2+), IT-Home quartiles, and smoking categories (no smoking during pregnancy, smoked until pregnancy was known, and smoked during pregnancy).

b. Adjusted model with the inclusion of the three exposures in one model.

c. Total dialkyl phosphates is the sum of DEDTP, DETP, DEP, DMDTP, DMTP and DMP.

d. Multiple-partial F test used to test whether exposure from different time points relates in the same manner to Categories scores.

e. Diethyl alkyl phosphates is the sum of DEDTP, DETP and DEP.

f. Dimethyl alkyl phosphates is the sum of DMDTP, DMTP and DMP.

Figure S1. Restricted cubic spline (and 95% confidence interval) of adjusted child nonverbal IQ scores and (untransformed) total dialkyl phosphate concentrations, by timing of pregnancy urine sampling (n=708). Adjusted for child sex, maternal age, ethnicity

(Dutch, other-western, and non-western), education (low, intermediate, and high), income (low, middle, and high), marital status, maternal alcohol consumption (no alcohol consumption during pregnancy, alcohol consumption until pregnancy was known, occasional alcohol consumption during pregnancy, and frequent alcohol consumption during pregnancy), maternal non-verbal IQ, BMI categories (<18.5, 18.5-25, 25-30, and 30+), height of the mother, parity categories (0, 1, and 2+), IT-Home quartiles, and smoking categories (no smoking during pregnancy, smoked until pregnancy was known, and smoked during pregnancy).

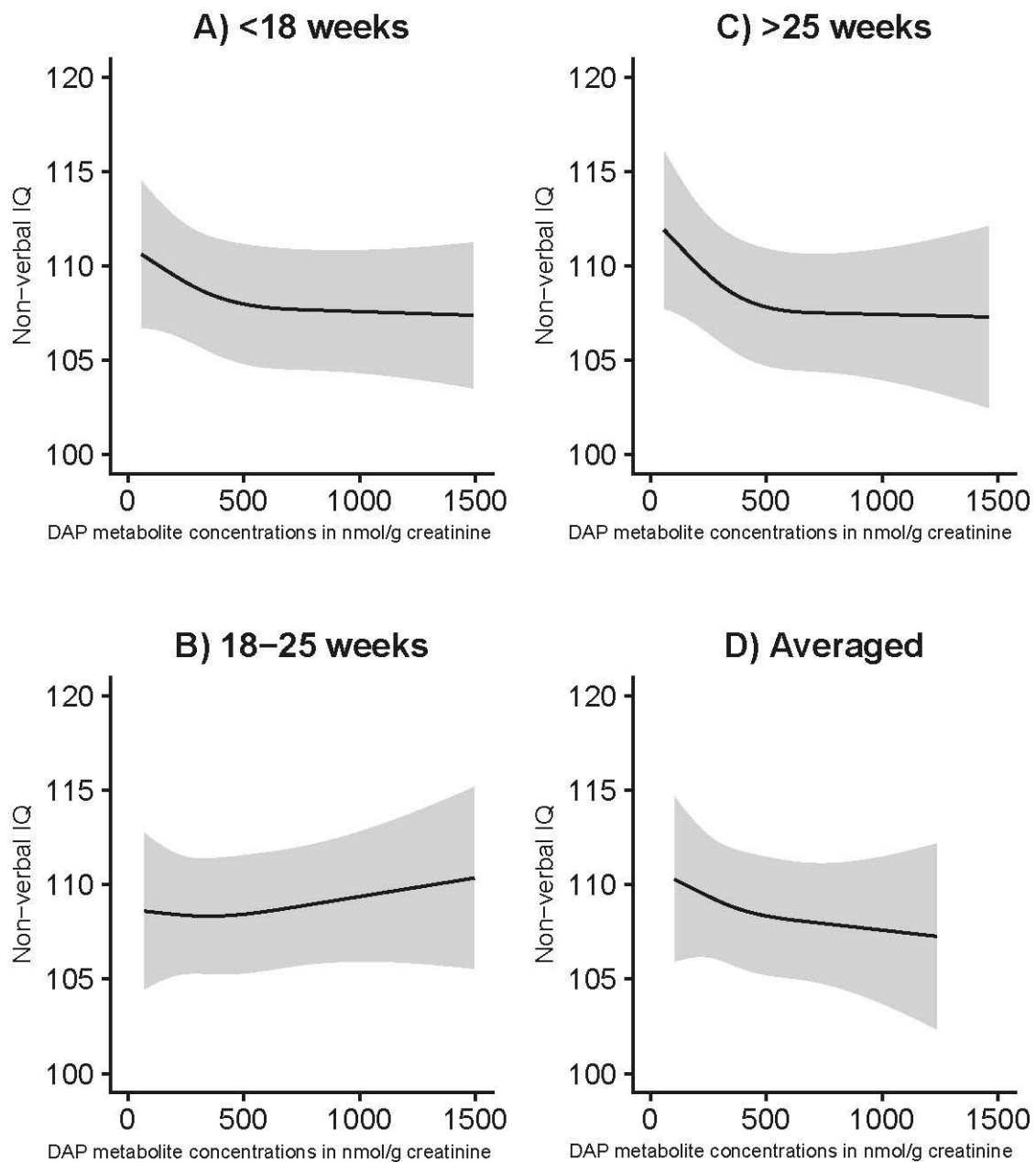


Figure S2. Restricted cubic spline (and 95% confidence interval) of adjusted child nonverbal IQ scores and (untransformed) diethyl alkyl phosphate concentrations, by timing of pregnancy urine sampling (n=708). Adjusted for child sex, maternal age, ethnicity (Dutch, other-western and non-western), education (low, intermediate, and high), income (low, middle, and high), marital status, maternal alcohol consumption (no alcohol consumption during pregnancy, alcohol consumption until pregnancy was known, occasional alcohol consumption during pregnancy, and frequent alcohol consumption during pregnancy), maternal non-verbal IQ, BMI categories (<18.5, 18.5-25, 25-30, and 30+), height of the mother, parity categories (0, 1, and 2+), IT-Home quartiles, and smoking categories (no smoking during pregnancy, smoked until pregnancy was known, and smoked during pregnancy).

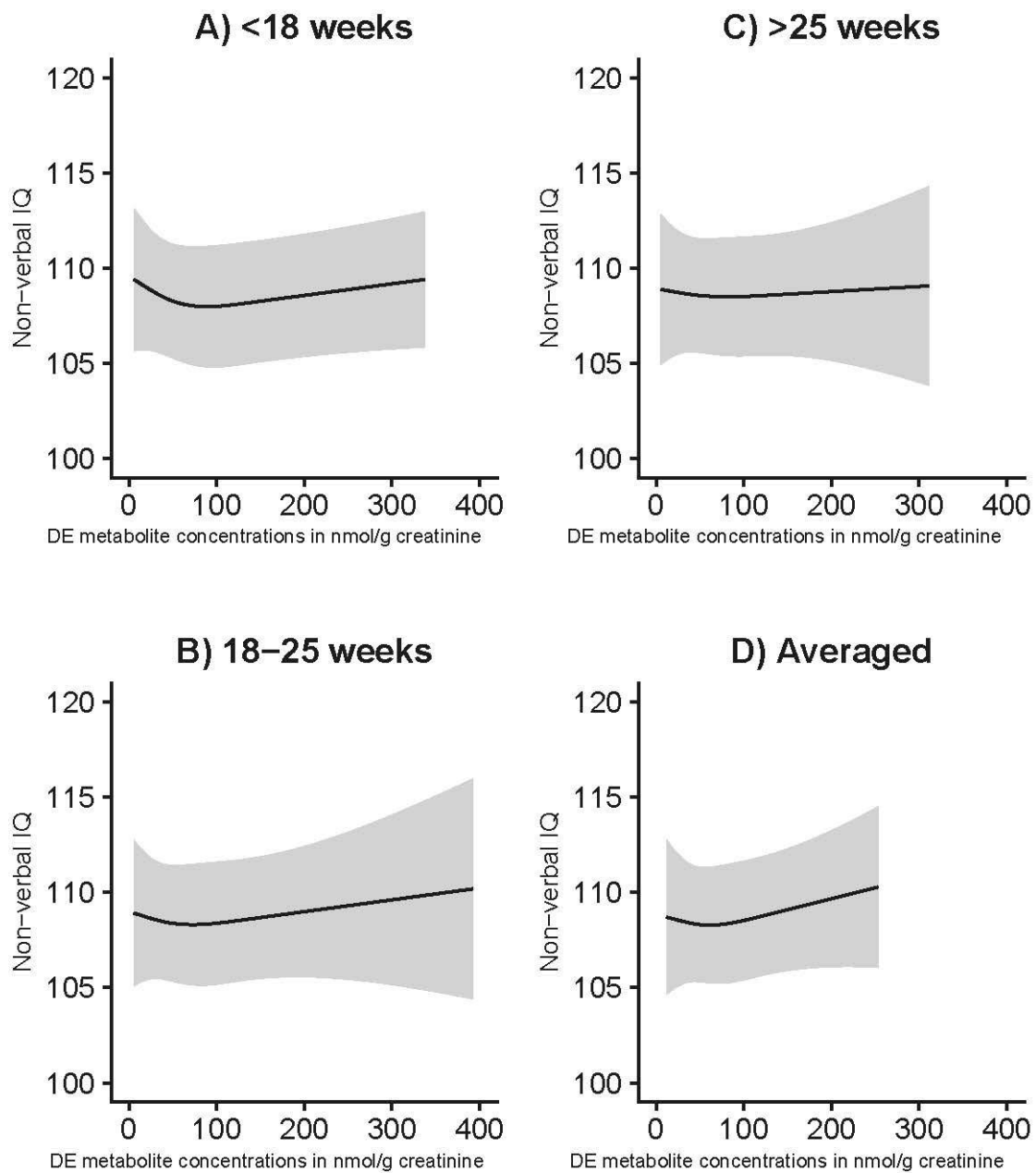


Figure S3. Restricted cubic spline (and 95% confidence interval) of adjusted child nonverbal IQ scores and (untransformed) dimethyl alkyl phosphate concentrations, by timing of pregnancy urine sampling (n=708). Adjusted for child sex, maternal age, ethnicity (Dutch, other-western and non-western), education (low, intermediate, and high), income (low, middle, and high), marital status, maternal alcohol consumption (no alcohol consumption during pregnancy, alcohol consumption until pregnancy was known, occasional alcohol consumption during pregnancy, and frequent alcohol consumption during pregnancy), maternal non-verbal IQ, BMI categories (<18.5, 18.5-25, 25-30, and 30+), height of the mother, parity categories (0, 1, and 2+), IT-Home quartiles, and smoking categories (no smoking during pregnancy, smoked until pregnancy was known, and smoked during pregnancy).

