

Starch-entrapped microspheres show a beneficial fermentation profile and decrease in potentially harmful bacteria during *in vitro* fermentation in faecal microbiota obtained from patients with inflammatory bowel disease

Devin J. Rose¹, Koen Venema², Ali Keshavarzian³ and Bruce R. Hamaker^{1*}

¹Whistler Center for Carbohydrate Research and Department of Food Science, Purdue University, 745 Agriculture Mall Drive, West Lafayette, IN 47907, USA

²Department of BioSciences, TNO Quality of Life, Zeist, The Netherlands

³Division of Digestive Diseases and Nutrition, Rush University, Chicago, IL 60612, USA

(Received 14 April 2009 – Revised 17 November 2009 – Accepted 19 November 2009 – First published online 21 December 2009)

The purpose of this research was to test the hypothesis that starch-entrapped microspheres would produce favourable fermentation profiles and microbial shifts during *in vitro* fermentation with the faecal microbiota from patients with inflammatory bowel disease (IBD). *In vitro* fermentation was carried out using a validated, dynamic, computer-controlled model of the human colon (Toegepast Natuurwetenschappelijk Onderzoek gastro-intestinal model-2) after inoculation with pooled faeces from healthy individuals, patients with inactive IBD (Crohn's disease (CD)) or patients with active IBD (ulcerative colitis (UC)). Starch-entrapped microspheres fermented more slowly and produced more butyrate than fructo-oligosaccharides (FOS) when fermented with the faecal microbiota from patients with active UC. When fermented with the microbiota from patients with inactive CD, starch-entrapped microspheres also fermented more slowly but produced similar amounts of butyrate compared with FOS. Starch-entrapped microspheres showed a greater ability to maintain a low pH during simulated-distal colon conditions compared with FOS. After fermentation with the microbiota from inactive CD patients, starch-entrapped microspheres resulted in lower concentrations of some potentially harmful gut bacteria, included in *Bacteroides*, *Enterococcus*, *Fusobacterium* and *Veillonella*, compared with FOS. These findings suggest that slow fermenting starch-entrapped microspheres may induce a favourable colonic environment in patients with IBD through high butyrate production, maintenance of low pH in the distal colon and inhibition of the growth of potentially harmful bacteria.

Butyrate: Ulcerative colitis: Crohn's disease: Encapsulation: Colon: Bacteria

Ulcerative colitis (UC) and Crohn's disease (CD), collectively known as inflammatory bowel disease (IBD), are chronic diseases with unknown aetiologies. The clinical course is characterised by episodes of flare-up, i.e., patients are symptomatic and exhibit active intestinal inflammation and tissue injury, followed by periods of remission, i.e., patients are asymptomatic and display no active intestinal inflammation or tissue injury. There is evidence that the active inflammation experienced in IBD is, at least in part, due to an inappropriate and dysregulated immune response to luminal gut microbiota.

The luminal-associated microbiota move through the large bowel with peristaltic movements and appear in the faeces, while mucosa-associated microbiota are static and are present at the mucous interface between the epithelium and lumen⁽¹⁾. Harper *et al.*⁽²⁾ demonstrated that a small bowel effluent (containing luminal bacteria) introduced into the defunctioned colon of patients with CD treated by loop ileostomy was far more pro-inflammatory than a (sterile) ultrafiltrate of the

effluent. Additionally, diversion of the intestinal luminal contents into the surgically excluded ileum of patients with CD induced inflammation in previously unaffected regions⁽³⁾. Thus, gut microbiota appear to play a key pathogenic role in both initiation and clinical course of IBD.

The luminal microbiota community can be simplistically divided into helpful/beneficial and harmful bacteria. 'Helpful' bacteria inhibit the growth of harmful bacteria, beneficially stimulate the immune system, induce production of SCFA, aid in digestion and absorption of nutrients and synthesise vitamins⁽⁴⁾. 'Harmful' bacteria induce protein purification, inhibit production of SCFA and promote growth of injurious bacteria or production of their pro-inflammatory and injurious products. Thus, factors that enhance the establishment of helpful bacteria in the gut lumen, while inhibiting the harmful ones, may prevent initiation and/or progression of the intestinal inflammatory cascade experienced in IBD patients during disease flare-up and, therefore, induce and maintain remission.

Abbreviations: CD, Crohn's disease; FOS, fructo-oligosaccharides; IBD, inflammatory bowel disease; TIM-2, Toegepast Natuurwetenschappelijk Onderzoek gastro-intestinal model-2; UC, ulcerative colitis.

* **Corresponding author:** Bruce R. Hamaker, fax +1 765 494 7953, email hamakerb@purdue.edu

Maintenance of a healthy gut microbiota relies on indigestible carbohydrates or dietary fibre. Under adequate dietary fibre intake, gut microbes receive a sufficient supply of carbohydrate to fulfil energy needs. During saccharolytic fermentation, bacteria produce SCFA (e.g., acetate, propionate and butyrate) and gases (e.g. CO₂ and hydrogen) and are able to proliferate. SCFA help maintain a (relatively) low colonic pH, preventing the growth of potentially harmful bacteria⁽⁵⁾. Acetate and propionate can be absorbed into the blood stream, and influence glucose and lipid metabolism⁽⁶⁾, while butyrate is utilised almost completely by colonic epithelial cells and represents their major source of energy⁽⁷⁾. With respect to IBD, butyrate is of particular importance because it additionally acts as an anti-inflammatory agent⁽⁸⁾. Therefore, it appears that adequate dietary fibre intake is important for maintaining healthy gut microbiota community and for the prevention or alleviation of colonic inflammation.

It is important to note, however, that not all dietary fibres are created equal. Most dietary fibres that can be utilised by bacteria (i.e., fermentable fibres) are rapidly degraded at the terminal ileum and caecum, leaving very little carbohydrate substrate for both luminal and especially mucosal bacteria in more distal regions of the colon⁽⁹⁾. This results in a decrease in SCFA (and thus an increase in pH) and an increase in undesirable, even toxic compounds, such as phenol and NH₃ in distal regions of the colon⁽¹⁰⁾, resulting in a less healthy colonic environment. Thus, intake of slowly fermentable fibres may help increase beneficial fermentative products in the distal colon and improve colonic health.

We have developed a novel source of dietary fibre, termed starch-entrapped microspheres, wherein electrostatically cross-linked alginate forms a web-like structure that is filled with starch⁽¹¹⁾. The alginate thus creates a physical barrier that impedes digestion such that over 90% of the starch in uncooked starch-entrapped microspheres remains intact after simulated upper-gastrointestinal digestion (i.e. mouth, stomach and small intestine) using an *in vitro* procedure⁽¹²⁾. Furthermore, this product has shown potential as a slowly fermentable fibre with high production of butyrate and the ability to change the colonic microbiota *in vitro*⁽¹²⁾. Thus, the purpose of this research was to test the hypothesis that slow fermenting starch-entrapped microspheres would produce more favourable fermentation profiles and microbial shifts than a rapidly fermenting fibre, fructo-oligosaccharides (FOS), during *in vitro* fermentation with the faecal microbiota obtained from patients with IBD.

Experimental methods

Fermentation substrates

Starch-entrapped microspheres were made by dissolving 0.2 kg of sodium alginate in 8.8 kg water. One kilogram of waxy maize starch was then added, and the suspension was mixed until homogenous. The slurry was then pumped through an atomiser into 20 l of stirred 4% (w/v) calcium chloride dihydrate. The microspheres were then harvested by filtration. After extensive washing, the microspheres were mixed with ethanol and filtered again. The ethanol was necessary to prevent the microspheres from sticking together. The microspheres were allowed to dry in air until the odour of ethanol

could not be detected (about 4 h) and then moved to a forced draft oven at 45°C to finish drying (about 24 h).

Total starch was determined using a colorimetric method (Total Starch (α-amylase/amyloglucosidase method), Megazyme, Wicklow, Ireland) after disruption of the alginate matrix with a ball mill (Brinkman, Westbury, NY, USA). Moisture content was measured by loss in weight after drying in a forced draft oven at 105°C for 18 h. Short-chain FOS was obtained from Encore Technologies (Plymouth, MN, USA). As per the manufacturer's spec sheet, the product contained 94% FOS, 0–4% glucose and 4–8% sucrose.

Faeces

Fresh stools were collected from six patients with inactive CD and six patients with active UC, who had not received antibiotics within the last 4 weeks. CD and UC patients were selected from the IBD Clinic at Rush University Medical Center (Chicago, IL, USA). The diagnosis of UC and CD diseases was made based on established clinical, endoscopic and histological criteria. Patients with inactive CD had a CD activity index of <150, and had no diarrhoea, abdominal pain or bleeding. Patients with active UC had rectal bleeding, diarrhoea (liquid stool and stool frequency >3/d) and friable and ulcerated rectosigmoid mucosa on their sigmoidoscopy at the time of stool collection. All the patients were taking daily 5-aminosalicylic acid, but none were taking prednisone at the time of stool collection. The healthy controls consisted of faculty and staff of the university who were not involved in the study. Faeces were collected in gas-tight bags containing Anaerocult C (to maintain anaerobiosis; Merck, Darmstadt, Germany), frozen in liquid nitrogen and then stored at –80°C until used for fermentation experiments (approximately 1 month).

To validate our use of frozen stool in fermentation experiments, we analysed a fresh microbiota and the same microbiota stored at –80°C. Microbial composition of the fresh and frozen microbiotas was checked periodically over 44 weeks of storage using denaturing gradient electrophoresis as described previously⁽¹³⁾. Activity of the fresh and frozen microbiotas (8 d, –80°C) was assessed by measuring SCFA production during *in vitro* fermentation as described below, except the total fermentation time was 196 h, and the microbiota were maintained on the standard ileal efflux medium during the entire experiment rather than switching to the test carbohydrates after 16 h.

Fermentation

Faeces were defrosted in an anaerobic cabinet, and samples from six individuals in each of the three categories were combined to yield a microbiota representative of that group. The amounts used from each individual were not equal due to differing amounts of stool collected (Table 1). Pooling was important to reduce the possibility of anomalous results⁽¹⁴⁾ due to the highly variable nature of gut microbiota among individuals⁽¹⁵⁾. The faeces were homogenised with nine volumes of diluted standard ileal efflux medium (modified from⁽¹⁶⁾; Table 2). Ninety millilitres of this homogenate were used to inoculate the Toegepast Natuurwetenschappelijk Onderzoek *in vitro* model of the large

Table 1. Amount of faecal material used from each donor

Healthy		Inactive CD		Active UC	
ID	Faeces (g)*	ID	Faeces (g)	ID	Faeces (g)
1	23.8	17	11.9	5	30.5
8	21.0	13	32.8	2	5.2
3	33.9	20	19.1	22	22.8
4	44.7	15	45.3	24	29.2
7	36.6	6	35.4	10	73.4
12	40.0	25	59.0	14	44.0
Total	200	Total	204	Total	205

CD, Crohn's disease; UC, ulcerative colitis; ID, identification.

*Wet weight.

intestine: the Toegepast Natuurwetenschappelijk Onderzoek gastro-intestinal model-2 (TIM-2) system (TNO, Zeist, The Netherlands)⁽¹⁷⁾. This system has been validated against sudden death individuals⁽¹³⁾ and recently investigated using molecular RNA technology and assessed as closely simulating the microbiota in the colon⁽¹⁸⁾.

The TIM-2 system was allowed to equilibrate for 16 h after inoculation, during which time the microbiota (representing healthy, inactive CD or active UC) were fed a standard ileal efflux medium (Table 2) at a rate of 2 ml/h (containing 5 g of carbohydrate per 24 h). After equilibration, the feeding line was shut off, and the microbiotas were starved for 2 h. The test period ($t = 0$ h) was then begun by introducing the test carbohydrates (starch-entrapped microspheres or FOS) into the TIM-2 units. Carbohydrates were administered with a standard ileal efflux medium prepared without the carbohydrates listed in Table 2. FOS was dissolved in the medium, and starch-entrapped microspheres, due to their insoluble nature, were administered through a second syringe that was kept dry. Test carbohydrates were given at a rate of 10 g of fermentable carbohydrate per 24 h for 72 h.

Table 2. Composition of standard ileal efflux medium (SIEM) and diluted SIEM per litre

Component	SIEM	Diluted SIEM
Normal maize starch (g)	75.1	39
Bacto peptone (g)	70.4	23.4
Casein (g)	70.4	23.4
Tween 80 (g)	50.7	16.9
Pectin (g)	9.01	4.68
Xylan (g)	9.01	4.68
Arabinogalactan (g)	9.01	4.68
Waxy maize starch (g)	9.01	4.68
NaCl (g)	1.35	0.703
MgSO ₄ (g)	1.5	0.390
K ₂ HPO ₄ ·3H ₂ O (mg)	751	390
Haemine (mg)	3	1.56
FeSO ₄ ·7H ₂ O (mg)	1.5	0.781
Cys-HCl (mg)	300	156
CaCl ₂ ·2H ₂ O (mg)	135	70.3
Bile (mg)	117	78.1
Pantothenic acid (µg)	15	7.81
Nicotinamide (µg)	7.51	3.9
<i>p</i> -Aminobenzoic acid (µg)	7.51	3.9
Thiamin (µg)	6.01	3.12
Biotin (µg)	3	1.56
Menadione (µg)	1.5	0.781
Vitamin B ₁₂ (µg)	0.751	0.39
Antifoam B (ml)	7.51	3.9

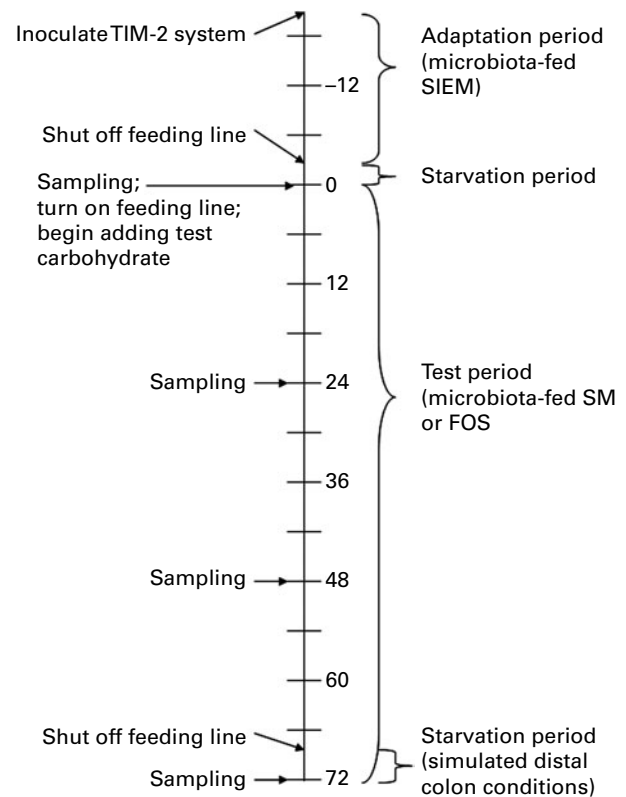
The bacteria were constantly supplied with carbohydrate; therefore, this model more closely resembles the proximal rather than the distal colon. To approximate the distal colon more closely, during the last 4 h of fermentation ($t = 68-72$ h), the feeding line was shut off, and the pH was monitored to indicate whether the saccharolytic fermentation continued, or if the bacteria switched to putrefactive fermentation due to lack of carbohydrate. Samples were collected every 24 h for SCFA quantification, and microbial analyses were performed at the initial ($t = 0$ h) and final ($t = 72$ h) times. Fig. 1 shows a timeline of these events.

SCFA determination

For SCFA, lumen or dialysate samples were centrifuged (12 000 rpm, 5 min). A mixture of formic acid (20%), methanol and 2-ethyl butyric acid (internal standard, 2 mg/ml in methanol) was added to the supernatant. A 0.5 µl sample was injected onto a GC column (Stabilwax-DA, length 15 m, inner diameter 0.53 mm, film thickness 0.1 mm; Varian Chrompack, Bergen op Zoom, The Netherlands) in a Chrompack CP9001 GC using an automatic sampler (Chrompack liquid sampler CP9050; Varian Chrompack)⁽¹⁹⁾.

Microbial analysis

Analysis of the microbiota with the intestinal-chip was performed at TNO (Zeist, The Netherlands), described by

**Fig. 1.** Timeline for Toegepast Natuurwetenschappelijk Onderzoek gastro-intestinal model-2 (TIM-2) experiments; numbers represent hours; SIEM, standard ileal efflux medium; SM, starch-entrapped microspheres; FOS, fructo-oligosaccharides.

Schuren *et al.*⁽²⁰⁾. DNA was isolated from luminal samples at the start ($t = 0$ h) and at the end of the TIM-2 experiments ($t = 72$ h). Signals were quantified by calculating the mean of all pixel values of each spot and calculating the local background about each spot. Signal intensity was dependent on the position of the probe within the 16S rRNA gene; for that reason, concentrations of individual bacterial classes could not be assessed without setting up standard curves using quantitative PCR for each probe. However, signal intensities could be compared within probe to determine relative changes in abundance of the bacterial class represented by that particular probe⁽²⁰⁾. Because the primary aim was to determine the propensity of each test carbohydrate to alter individual classes of bacteria, fold differences between the signals at the initial and final times were useful for this determination. Standard deviations were relatively large among runs; therefore, each replicate was analysed twice.

Data analysis

Data were analysed with SAS software (version 9.1; SAS Institute, Cary, NC, USA) using a mixed model ANOVA (PROC MIXED). Main effects were microbiota source (1, healthy; 2, inactive CD; 3, active UC) and carbohydrate source (1, starch-entrapped microspheres; 2, FOS). For those analyses that included a time element (i.e., comparison between the initial and final times), a time effect (0 and 72 h) was also included. Fisher's least significant different test was used to determine significant differences among treatment combinations. All the treatment combinations were performed in quadruplicate, except when the active UC microbiota were fermented with FOS, which were performed in triplicate.

Ethical approval

The present study was conducted according to the guidelines laid down in the Declaration of Helsinki and all procedures involving human subject/patients were approved by the Institutional Review Board of Rush University Medical Center. Written informed consent was obtained from all the subjects/patients.

Results and discussion

Use of frozen microbiota

Fig. 2 shows that after 44 weeks of storage at -80°C , the composition of the microbiota in terms of viable cells was not substantially affected, as evidenced by similar banding patterns on denaturing gradient electrophoresis gels. Furthermore, the stored, frozen samples still contained the microbial diversity of the fresh faecal sample, indicating that freezing had minimal influence on the microbiota composition.

The production of SCFA during 196 h of fermentation was also measured using a fresh microbiota and the same microbiota that had been frozen at -80°C for 8 d. On comparison, the fresh and frozen microbiotas showed similar SCFA production over at least 150 h of fermentation (Fig. 3). Most notably, during the first 72 h, which is the time period used in the present study, SCFA production was nearly identical.

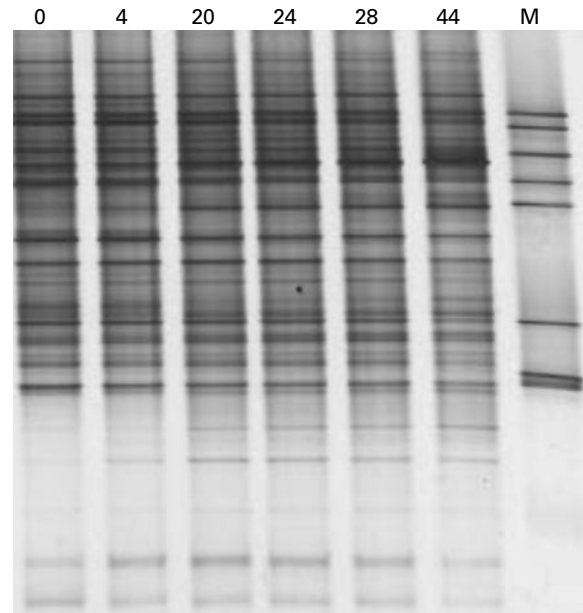


Fig. 2. Denaturing gradient gel electrophoresis profiles of a fresh faecal sample (0) and the same faecal sample after frozen storage (-80°C) for 4, 20, 24, 28 and 44 weeks. M, marker.

Moreover, the ratios of SCFA produced during fermentation (acetate:propionate:butyrate) were not significantly different for fresh and frozen microbiotas (data not shown).

Previously, others have reported using frozen microbiotas from animals^(21,22). For example, Hervas *et al.*⁽²²⁾ discovered that storage of rumen fluid at -18°C for 24 h did not affect fermentation parameters when starch and cellulose were fermented; although average fermentation rate and the extent of polysaccharide degradation were affected, when barley straw neutral-detergent fibre and alfalfa hay were fermented. Stanco *et al.*⁽²¹⁾ showed that it was possible to use frozen inoculum from the caecum of rabbits (stored at -18°C) for at least 3 months without affecting gas production, degradation of organic matter and SCFA production by the microbiota during *in vitro* fermentation. In a review aimed at examining factors that influence microbial activity of the

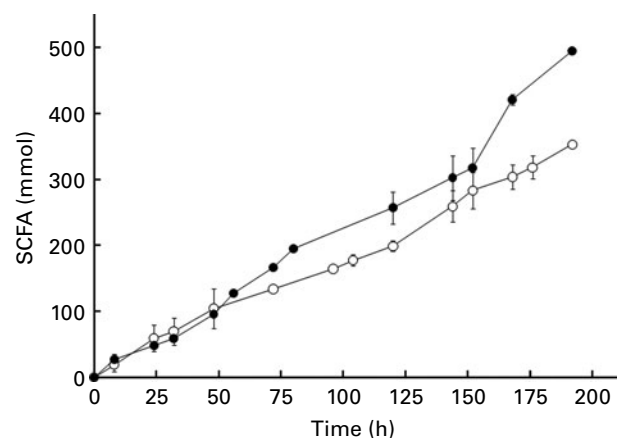


Fig. 3. Production of SCFA (acetate + propionate + butyrate) from a fresh microbiota (\circ) and the same microbiota after frozen storage (8 d, -80°C ; \bullet). Error bars show standard deviation; some error bars are too small to see; $n > 3$.

rumen microbiota, Mould *et al.*⁽²³⁾ concluded that during storage and sample transport, exposure to air should be excluded. For this reason, we maintained anaerobiosis during storage and transport using Anaerocult C. These reports, together with the data provided in Figs. 2 and 3, provided sound evidence that the use of a frozen microbiota provides results that are comparable to a fresh microbiota for *in vitro* fermentation studies.

SCFA production

SCFA may be of particular importance to colonic health. They reduce colonic pH, thereby inhibiting the growth of some opportunistic, pathogenic bacteria⁽⁵⁾, decreasing the activity of co-carcinogenic enzymes such as glucuronidases, glycosidases and 7 α -hydroxylases^(24,25). Butyrate, one of the SCFA produced during fermentation, may be especially important in IBD. *In vitro* studies have revealed that butyrate suppresses the immuno-inflammatory response by inhibiting activation of the transcription factor NF- κ B⁽²⁶⁾ and its downstream products like pro-inflammatory cytokines TNF and IL-12 as well as up-regulating the production of the anti-inflammatory cytokine IL-10⁽⁸⁾. Patients treated with butyrate enemas have shown decreased inflammation due to a reduction in macrophages positive for activated NF- κ B⁽²⁷⁾.

Patients with IBD have not only shown decreased SCFA production⁽²⁸⁾, they may also have impaired ability to harvest their beneficial effects. Higher concentrations of sulphate-reducing bacteria have been reported in patients with IBD compared with controls⁽²⁹⁾. An increase in sulphate-reducing bacteria increases hydrogen sulphide production, which blocks colonocyte oxidation of butyrate⁽³⁰⁾. Therefore, dietary fibres that can increase butyrate production by enhancing growth of butyrate producing bacteria, or fibres that can improve butyrate utilisation by inhibiting the growth of sulphate-reducing bacteria may be helpful in alleviating colonic inflammation.

When comparing among faecal microbiotas grown on starch-entrapped microspheres, the healthy microbiota produced more butyrate than microbiotas from IBD stools (Table 3), demonstrating impaired butyrate production by faecal microbiota in IBD patients. This was most pronounced in the inactive CD microbiota. In faecal microbiota grown on

Table 3. Butyrate and total SCFA production from healthy, inactive Crohn's disease (CD) and active ulcerative colitis (UC) microbiotas when administered starch-entrapped microspheres (SM) or fructo-oligosaccharides (FOS); values reported as mmol produced per amount of carbohydrate administered

Microbiota source/carbohydrate source	Butyrate	Total SCFA
Healthy		
SM	97.1 ^a	197 ^a
FOS	57.1 ^{b,c}	170 ^{a,b}
Inactive CD		
SM	21.0 ^d	109 ^c
FOS	23.4 ^d	85.9 ^c
Active UC		
SM	72.0 ^b	203 ^a
FOS	38.8 ^{c,d}	125 ^{b,c}

^{a,b,c,d} Mean values within a column with unlike superscript letters were significantly different ($P < 0.05$).

FOS, only the microbiota from patients with inactive CD showed significant inhibition. Of note is that starch-entrapped microspheres resulted in significantly higher butyrate production than FOS when fermented with the healthy and active UC faecal microbiotas.

Total SCFA production was similar when comparing between carbohydrate sources, except when the faecal microbiota from active UC were used (Table 3). In this case, starch-entrapped microspheres produced significantly more SCFA. Moreover, starch-entrapped microspheres were able to induce a total SCFA production in this diseased microbiota that were similar to the healthy faecal microbiota. The same was not true for FOS.

During the adaptation period ($t = -16-0$ h), the faecal microbiota were fed a standard ileal efflux medium, which contained a mixture of carbohydrates that approximates the range of substrates that colonic bacteria may be exposed to under normal conditions⁽¹⁷⁾. Therefore, the molar ratios of SCFA produced during this time period could be compared to the ratios at the end of the test period ($t = 72$ h) to determine whether there was a shift in the molar ratios of SCFA produced. In particular, an increase in the molar proportion of butyrate produced would suggest an increase in butyrate producing bacteria, which may be beneficial due to the anti-inflammatory nature of butyrate.

In the healthy faecal microbiota, a significant increase in the proportion of butyrate produced was only experienced when the faecal microbiota were exposed to starch-entrapped microspheres (Fig. 4; with a concomitant decrease in acetate production, data not shown). The microbiota from patients with inactive CD showed a shift toward butyrate production with both starch-entrapped microspheres and FOS (with concomitant decrease in acetate production, data not shown), while that of active UC showed no significant shift toward butyrate production.

Thus, in light of the trophic effects of SCFA, and in particular butyrate, on the colon, our data suggest that starch-entrapped microspheres may be more beneficial than FOS to promote gut health in healthy subjects and to promote anti-inflammatory milieu in the colon of patients with active UC.

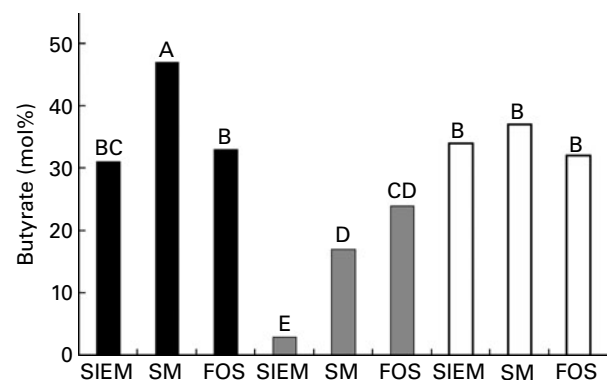


Fig. 4. Molar percentage of butyrate (of total SCFA) produced from healthy (■), inactive Crohn's disease (■) and active ulcerative colitis (□) microbiotas when administered a standard ileal efflux medium (SIEM, Table 2) during the adaptation period ($t = -16-0$ h, Fig. 1) compared with starch-entrapped microspheres (SM) or fructo-oligosaccharides (FOS) during the test period ($t = 0-72$ h, Fig. 1); bars marked with the different capital letters are significantly different ($P < 0.05$).

Fermentation rate and pH changes

As mentioned, the TIM-2 system more closely approximates the proximal rather than the distal colon because the microbiotas are constantly supplied with test carbohydrates during fermentation. To approximate conditions that may occur in more distal regions of the colon, the feeding line of the TIM-2 system was shut off during the last 4 h of fermentation. Fig. 5 shows the changes in pH during the last 4 h of fermentation when starch-entrapped microspheres and FOS were inoculated with the faecal microbiota from healthy individuals or patients with IBD. SCFA from the saccharolytic fermentation cause a decrease in pH that is detected by the automatic titrator that prevents the pH from dropping below 5.8 by addition of sodium hydroxide. Therefore, a jagged line indicates the saccharolytic fermentation, and the more jagged the line (crests closer together), the more rapid the fermentation rate.

During the first hour after the feeding line was shut off (68–69 h), all the samples showed saccharolytic fermentation. The starch-entrapped microspheres clearly showed a less jagged line than FOS, indicating slower fermentation. The faecal microbiota from healthy subjects showed continued the saccharolytic fermentation after the feeding line was shut off ($t = 69–72$ h) when grown on starch-entrapped microspheres. Conversely, FOS showed a gradual increase in pH during this time period, which is indicative of a shift

toward putrefactive fermentation, which results in NH_3 production. This supports our previous study showing slow digestion and fermentation of the starch-entrapped microspheres⁽¹²⁾ and suggests this material could provide beneficial fermentable carbohydrates in the distal colon, whereas FOS would not.

As with the healthy microbiota, the microbiota from IBD patients showed continuous fermentation when fermented with starch-entrapped microspheres (Fig. 5). The large peaks for the active UC microbiota when fed starch-entrapped microspheres were due to inadequate mixing. For an unknown reason, when starch-entrapped microspheres were fermented with the active UC microbiota, the slurry became very thick and the mixing laboured. Although this situation was not ideal, this curve still did not show a gradual upward trend (as seen with FOS), indicating the occurrence of saccharolytic fermentation with the starch-entrapped microspheres.

In contrast to starch-entrapped microspheres, the microbiota from patients with IBD when incubated with FOS, showed more pronounced increases in pH during the final 4 h of fermentation compared with the stool from healthy individuals. This suggests that slowly fermentable dietary fibres, such as starch-entrapped microspheres, may be of particular importance in IBD due to their ability to maintain a low pH during prolonged fermentation.

Fermentation rate is important for the maintenance of gut health. As carbohydrates are fermented and their amount diminishes, putrefactive fermentation becomes significant, leading to an increase in pH due to lack of SCFA and production of NH_3 ⁽⁴⁰⁾. The higher pH may allow the proliferation of undesirable bacteria⁽⁵⁾. The distal colon also contains higher concentrations of toxic metabolites⁽¹⁰⁾ due to fermentation of protein instead of carbohydrate. These undesirable conditions in the distal colon may exacerbate inflammation and explain the high rate of colonic neoplasia in left side of the colon. Thus, improving colonic milieu in the distal colon by delivering slow fermentable carbohydrate could be a beneficial intervention for promotion of gut health and prevention of colonic diseases like colonic polyps and cancer in healthy subjects as well as controlling colonic inflammation in inflammatory disorders of colon like UC. Our data provide compelling evidence that starch-entrapped microspheres are the ideal substrate to achieve this goal, although further *in vivo*, long-term studies in healthy subjects and patients with IBD are required to confirm these gut-health promoting effects of starch-entrapped microspheres.

Initial composition of the microbiotas from healthy individuals and patients with inactive Crohn's disease and active ulcerative colitis

Table 4 shows the initial ($t = 0$ h) fold differences among the diseased and healthy faecal microbiotas of some of the major genera of bacteria found in the large intestine^(31,32). Therefore, changes in these classes of bacteria would likely represent a change in the gut metabolism as a whole. The microbiota from patients with inactive CD displayed far weaker signals for *Bacteroides*, *Clostridium* and *Eubacterium* compared with the healthy microbiota. In contrast, the faecal microbiota from patients with active UC displayed only slightly different signals for these three genera of bacteria compared with the faecal microbiota from healthy individuals. This suggests

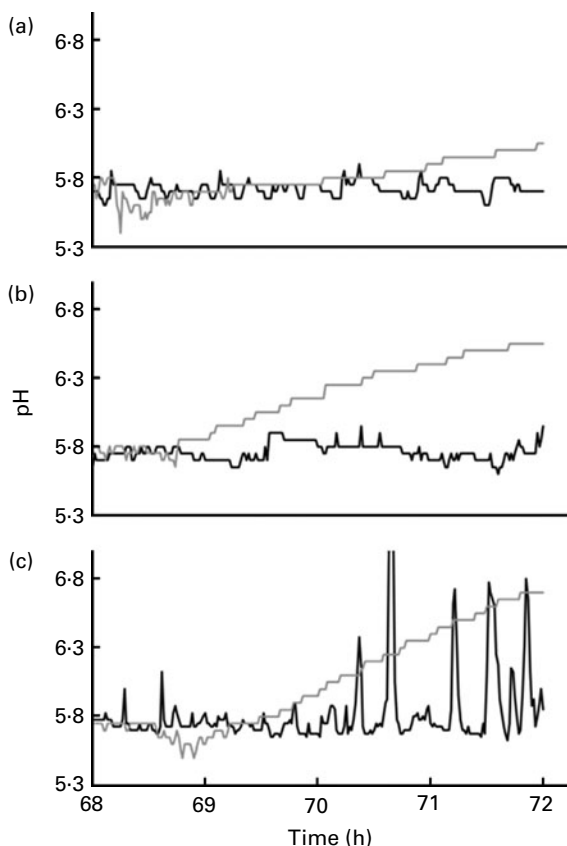


Fig. 5. Changes in pH during the last 4 h of fermentation (when the feeding line had been shut off) of faecal microbiotas from healthy individuals (a), patients with inactive Crohn's disease (b) or active ulcerative colitis (c) that had been previously fed starch-entrapped microspheres (—) or fructo-oligosaccharides (---).

Table 4. Fold differences in signal for select bacterial classes in the initial microbiota from patients with inactive Crohn's disease (CD) or active ulcerative colitis (UC) compared with the healthy microbiota; values reported as fold difference from healthy faecal microbiota, with negative numbers indicating a lower signal in the diseased stool and a positive number signifying a higher signal in the diseased stool

Classification	Inactive CD	Active UC
General bacteria	-2.21***	-1.58**
<i>Bacteroides</i>	-19.3***	1.89***
<i>Bifidobacterium</i>	-12.4***	-4.23***
<i>Clostridium</i>	-9.23***	-1.03
<i>Enterococcus</i>	-1.47	1.23
<i>Escherichia</i>	-1.45	-3.21*
<i>Eubacterium</i>	-5.77***	-1.74*
<i>Fusobacterium</i>	1.67	10.9***
<i>Lactobacillus</i>	-1.09	1.00
<i>Streptococcus</i>	-1.14	-1.32
<i>Veillonella</i>	1.00	1.55***

Mean values were significantly different from those of healthy microbiota: * $P < 0.05$, ** $P < 0.01$, *** $P < 0.001$.

that microbiota from patients with active UC more closely resembled the healthy microbiota than did the inactive CD microbiota, as these three genera of bacteria represent the major proportion of the gut microbiota as a whole⁽³³⁾. Additionally, these are the most important butyrate producers in the gut. The fact that these genera were so much higher in the healthy and active UC microbiota compared with inactive CD at least partially explains why butyrate production was so low in the inactive CD microbiota (Table 3).

For the probiotic genera *Lactobacillus* and *Bifidobacterium*, no substantial differences were found in the concentrations of *Lactobacillus* among microbiotas, but the healthy microbiota had a far greater quantity of *Bifidobacterium* than the microbiota from active UC and inactive CD patients. These genera of bacteria are reported to be beneficial to gut health⁽⁴⁾; and their lack may be related to the diseased condition.

When comparing the general bacterial signals, the microbiota from patients with inactive CD showed a 2-fold lower concentration than that of healthy individuals. However, signals from a number of the genus probes shown in Table 4 were substantially lower for the inactive CD microbiota compared with the healthy stool. In particular, the major genera, *Bacteroides*, *Clostridium* and *Eubacterium*, were far more than 2-fold lower. This suggests that many of the bacteria in the inactive CD microbiota belonged to genera not represented in Table 4. This supports the findings of Seksik *et al.*⁽³⁴⁾, who demonstrated that a high percentage (30%) of the dominant microbiota in CD belongs to unusual phylogenetic groups.

Changes in the faecal microbiota of healthy subjects during fermentation

After 72 h of fermentation, FOS induced a major increase in the concentration of *Eubacterium* in faecal microbiota from healthy subjects, whereas starch-entrapped microspheres did not (Table 5). While *Eubacteria* are important butyrate producers⁽³⁵⁾, the significantly higher butyrate production from the healthy microbiota when administered starch-entrapped microspheres compared with FOS (Table 3) suggests that starch-entrapped microspheres must have increased the growth of other butyrate producing bacteria more than FOS increased the growth of *Eubacterium*.

Concentrations of *Streptococci* were decreased with starch-entrapped microspheres, but left largely unchanged with FOS (Table 5). Prior studies reported that *Streptococcus* species exhibit mixed effects on the colonic environment. While some species, such as *Streptococcus agalactiae* and *Streptococcus bovis*, display negative effects on colonic milieu⁽³⁶⁻³⁸⁾, other species such as *S. salivarius*, show positive characteristics^(39,40). In the present study, of these

Table 5. Fold changes in the signals of selected bacterial classes in the healthy, inactive Crohn's disease (CD) and active ulcerative colitis (UC) microbiotas after 72 h of fermentation with starch-entrapped microspheres (SM) or fructo-oligosaccharides (FOS); values reported as fold difference from the initial respective faecal microbiota, with negative numbers indicating a lower signal after fermentation, and positive numbers signifying a higher signal after fermentation

Bacterial group	Healthy		Inactive CD		Active UC	
	SM	FOS	SM	FOS	SM	FOS
General bacteria	-1.18	-1.18	1.00	1.18	-1.22	1.24*
<i>Bacteroides</i>	1.07	-1.16	5.96*	15.0***	-1.89**	-2.59***
<i>Bacteroides fragilis</i>	-6.47***	-2.44**	1.62	5.38***	-2.37***	-11.8***
<i>Bacteroides vulgatus</i>	1.32	-3.44*	5.94	16.3**	-2.09*	-3.07**
<i>Bifidobacterium</i>	1.04	1.09	-3.43**	-3.60**	-1.50	-3.52***
<i>Clostridium</i>	-6.67***	-6.00***	1.54	2.54**	-5.85**	-3.66**
<i>Clostridium butyricum</i>	-5.20***	-5.20***	1.17	2.08***	-4.38*	-3.18*
<i>Clostridium perfringens</i>	-7.83	-8.55	-1.15*	-1.12	-10.3***	-36.4***
<i>Enterococcus</i>	-1.64	-2.76**	-1.66	-2.53	-4.42**	-2.45*
<i>Escherichia</i>	-20.7*	-37.2*	-24.1*	-22.6*	-11.6	-11.6
<i>Eubacterium</i>	1.15	7.19***	1.46	13.5***	1.81	2.16
<i>Fusobacterium</i>	2.80	5.33***	-1.79	1.16	-10.9**	-2.98
<i>Lactobacillus</i>	-1.09	-1.09	1.27	1.09	-1.09	1.00
<i>Streptococcus</i>	-2.48**	-1.19	1.07	1.35	-1.31	2.13**
<i>Streptococcus agalactiae</i>	-1.20	-1.09	1.95	3.41	-1.73	2.11
<i>Streptococcus bovis</i>	-1.12**	-1.07	2.06	2.12	-3.31	1.74
<i>Streptococcus salivarius</i>	-8.46**	-1.37	-2.53	-1.56	-1.18	1.91
<i>Veillonella</i>	1.00	1.00	1.00	8.18**	-1.06	13.4**

Mean values were significantly different from those of initial microbiota: * $P < 0.05$, ** $P < 0.01$, *** $P < 0.001$.

three species, *S. bovis* decreased slightly and *S. salivarius* decreased substantially after fermentation with starch-entrapped microspheres. This suggests that FOS has greater benefit than starch-entrapped microspheres with respect to *Streptococcus* growth in the healthy faecal microbiota.

Clostridium concentrations were substantially affected by the test carbohydrates to about the same degree for the two treatments (Table 5). *Clostridium* is sometimes recognised as a harmful or undesirable genus of the gut microbiota⁽⁴⁾. For example, *Clostridium difficile* produces a toxin that causes colitis-like inflammation⁽⁴¹⁾, and infection with *C. difficile* exacerbates inflammation in patients with IBD⁽⁴²⁾. Unfortunately, we did not have a probe for *C. difficile* and were unable to determine how the test carbohydrates affected this bacterium. Two *Clostridia* that we did have probes, for *Clostridium perfringens* and *Clostridium butyricum*, were decreased by starch-entrapped microspheres and FOS by roughly the same degree. *C. perfringens* may have detrimental effects, suggested by significantly more *C. perfringens* found in faecal samples from patients with IBD compared with controls⁽⁴³⁾. In contrast, *C. butyricum* may be beneficial through its high SCFA (including butyrate) production and ability to alleviate dextran sodium sulphate-induced colitis in rats⁽⁴⁴⁾. In fact, many clostridia are major contributors to the colonic butyrate pool⁽²⁸⁾, which indicate that they may have an anti-inflammatory effect.

Escherichia concentrations were decreased during fermentation on starch-entrapped microspheres and FOS (Table 5). *Escherichia*, like clostridia, have mixed effects on the colonic environment, with some species exhibiting benefits and others exhibiting detrimental effects⁽⁴⁾. While a virulent strain of *Escherichia coli* (adherent-invasive *E. coli*) has been isolated from the ileal mucosa of rats with CD⁽⁴⁵⁾, and high concentrations of *E. coli* have been associated with colitis in rats⁽⁴⁶⁾, other strains of *E. coli* (e.g. Nissle 1917) are established probiotics⁽⁴⁷⁾.

In the healthy microbiota, the concentrations of *Bifidobacterium* and *Lactobacillus* were unaffected during fermentation, independent of carbohydrate source (Table 5). It is surprising that there was not an increase in *Bifidobacterium* on FOS, as FOS is known to be bifidogenic⁽⁴⁸⁾. A likely explanation is that the concentration of *Bifidobacterium* in the faecal microbiota community in healthy subjects, as suggested by Table 4, was initially quite high. If such was the case, previous research has demonstrated that it is almost impossible to then increase *Bifidobacterium* even further⁽⁴⁹⁾.

Changes in the microbiota from patients with inactive Crohn's disease during fermentation

The faecal microbiota from patients with inactive CD showed a substantial increase in *Bacteroides* concentration during fermentation (Table 5). Because faecal microbiota from patients with inactive CD had an extremely low concentration of *Bacteroides* at the initial time compared with the healthy microbiota (Table 4), an increase would represent a shift toward the healthy microbiota; thus suggesting a beneficial shift. The fact that FOS was able to increase *Bacteroides* more than starch-entrapped microspheres suggests that FOS was more desirable than starch-entrapped microspheres in this regard; however, some species of *Bacteroides* are

undesirable. For instance, *Bacteroides fragilis* is found in much larger numbers in the mucosal biofilm in patients with CD compared with healthy individuals, and thus may play a role in the pathogenesis of this disease⁽⁵⁰⁾. Also, *Bacteroides vulgatus* expresses a membrane protein that induces inflammation⁽⁵¹⁾. There was an increase in *B. fragilis* during fermentation with FOS, whereas no change was observed with starch-entrapped microspheres (Table 5). *B. vulgatus* were increased with both carbohydrate treatments, but only FOS showed a significant increase. Therefore, starch-entrapped microspheres may be superior to FOS at preventing the growth of potentially harmful *Bacteroides* species.

Eubacterium and *Veillonella* concentrations were also affected differently by starch-entrapped microspheres compared with FOS. *Eubacterium* concentration was increased during fermentation with FOS, while no change was observed with starch-entrapped microspheres (Table 5). As mentioned, the major benefit of *Eubacterium* is high butyrate production⁽³⁵⁾, yet the production of this metabolite was not significantly different among starch-entrapped microspheres and FOS when fermented with the microbiota from inactive CD patients (Table 3). This indicates that the increase in the concentration of *Eubacterium* seen with FOS must not have exceeded the increase in other butyrate producers induced by starch-entrapped microspheres. *Veillonella* was increased with FOS, whereas starch-entrapped microspheres had little effect. It is noteworthy that *Veillonella* is a harmful gut genus⁽⁴⁾, because it is not saccharolytic and produces NH₃ and hydrogen sulphide⁽⁵²⁾. Our finding suggests that starch-entrapped microspheres may be preferred over FOS by limiting growth of *Veillonella*.

Starch-entrapped microspheres and FOS induced similar effects on *Enterococcus*, *Escherichia* and *Bifidobacterium* concentrations (Table 5). *Enterococcus* signals were not increased with either carbohydrate. This is likely beneficial because high concentrations of *Enterococcus* have been associated with colitis in rats⁽⁴⁶⁾ and *Enterococcus faecialis* leads to distal colitis in mice⁽⁵³⁾. *Escherichia* concentrations were decreased with starch-entrapped microspheres and FOS. The mixed effects that this may have on the gut microbiota have been discussed earlier. Shifts in *Bifidobacterium* were unexpected. Significant decreases in this genus were observed when the microbiota from patients with inactive CD was exposed to starch-entrapped microspheres or FOS. One possible explanation is that stool microbiota community in patients with CD had an initially low concentration of *Bifidobacterium*; therefore, it is likely that these bacteria were unable to compete with the other bacteria for substrate, and thus were unable to proliferate. Alternatively, this decrease may simply be due to differences among healthy and diseased microbiota, i.e., a carbohydrate that is beneficial for one type of microbiota, may not be beneficial for another.

Changes in the microbiota from patients with active ulcerative colitis during fermentation

Starch-entrapped microspheres and FOS both resulted in similar decreases in *Bacteroides* signals during fermentation (Table 5). Unlike the microbiota from inactive CD, the microbiota from patients with active UC showed a much higher concentration of *Bacteroides* than the faecal microbiota in

healthy subjects before fermentation; therefore, a decrease in *Bacteroides* after fermentation may be beneficial. Of the two detrimental *Bacteroides* that we had probes for, *B. fragilis* and *B. vulgatus*, FOS induced far greater decreases than starch-entrapped microspheres. This suggests that FOS may result in more favourable changes in *Bacteroides* than starch-entrapped microspheres in active UC due to more substantial decreases in these potentially harmful species belonging to this genus.

Clostridium concentrations were affected largely to the same extent regardless of carbohydrate source. Within the clostridial genera, the beneficial bacterium, *C. butyricum*, and the detrimental bacterium, *C. perfringens*, were also substantially decreased by both the carbohydrates (Table 5).

The effects of starch-entrapped microspheres and FOS were different with respect to their influence on *Enterococcus*, *Fusobacterium*, *Streptococcus* and *Veillonella*. Both the carbohydrates decreased *Enterococcus* concentrations, but FOS only showed a 2.5-fold decrease, while starch-entrapped microspheres showed a 4.5-fold decrease (Table 5). In light of the possible detrimental effects of *Enterococcus* on gut health^(46,53), these data would suggest a greater benefit of starch-entrapped microspheres compared with FOS. *Fusobacterium* is another genus of bacteria that is likely detrimental to gut health; *Fusobacterium varium* has been suggested as a causative agent for UC⁽⁵⁴⁾. Even though we did not have a probe for this specific bacterium, a decrease in its genera may be beneficial. Starch-entrapped microspheres decreased the concentration of this genus, while FOS did not significantly affect *Fusobacterium* concentrations. *Streptococcus* increased with FOS and exhibited no substantial change with starch-entrapped microspheres; however, no change in the signals from individual *Streptococcus* species probes was observed. *Veillonella* was unchanged by starch-entrapped microspheres, but exhibited an increase with FOS. These data indicate that starch-entrapped microspheres may be better than FOS at preventing the proliferation of this purported harmful bacterial genus⁽⁴⁾.

There were unexpected changes in *Bifidobacterium*. Starch-entrapped microspheres did not substantially affect the *Bifidobacterium* concentration, but FOS decreased its concentration (Table 5). This supports the conclusions from the inactive CD microbiota that *Bifidobacterium* were unable to compete with other bacteria for substrate, or that a carbohydrate that is beneficial in one case may not be beneficial in all instances.

Conclusions

Although the aetiology of IBD remains unknown, it is now thought that gut microbiota play a key role in initiation and/or progression of gut inflammation and associated tissue injury. For example, it is known that luminal bacteria of IBD patients differ significantly from healthy subjects⁽³¹⁾, and the abnormal microbiota are likely to play a role in the disease progression⁽³⁾. Prebiotics and other dietary fibre substrates may be able to correct microbial abnormalities in IBD by selectively stimulating the growth of beneficial bacteria⁽⁴⁾. In the present study, starch-entrapped microspheres, with long lasting and controlled fermentation properties, were tested against FOS, a known prebiotic, in

regard to their influence on fermentation profiles and the stool microbiota of healthy subjects and patients with IBD.

Starch-entrapped microspheres showed clear advantages over FOS with respect to fermentation rate. Starch-entrapped microspheres fermented more slowly than FOS, as indicated by continued production of SCFA during the final starvation period ($t = 70-72$ h). This supports our previous findings⁽¹²⁾ and suggests that, unlike FOS, starch-entrapped microspheres should provide fermentable substrate into the distal colon, where carbohydrates, and consequently the beneficial fermentative metabolites, SCFA and particularly butyrate, are generally scarce.

Starch-entrapped microspheres resulted in higher butyrate production than FOS when fermented with the stool microbiota from healthy subjects and the stool microbiota from patients with active UC. This may have particular application for treatment of UC flare-ups and maintenance of remission due to the anti-inflammatory properties of butyrate. However, starch-entrapped microspheres did not outperform FOS in every aspect. For example, FOS resulted in lower concentrations of the potentially harmful bacteria, *B. fragilis* and *B. vulgatus*, after fermentation compared with starch-entrapped microspheres. Nevertheless, FOS resulted in higher concentrations of other potentially harmful bacteria: *Enterococcus*; *Fusobacterium*; *Veillonella*.

Starch-entrapped microspheres also showed benefits on the microbiota profile of patients with inactive CD. After fermentation with starch-entrapped microspheres, we noted lower concentrations of the potentially harmful *Bacteroides* species, *B. fragilis* and *B. vulgatus*, in the stool microbiota from patients with inactive CD compared with fermentation with FOS. Additionally, while FOS enhanced the growth of the harmful bacterial genus, *Veillonella*, starch-entrapped microspheres did not.

One limitation of the present study is that we used two different types of IBD to study active and inactive states of inflammation. Although UC and CD are inflammatory diseases of intestine and have many similar clinical and mechanistic features, they are two different types of inflammatory disorders. Our original aim was to compare the healthy microbiota to both active and inactive CD and UC. Unfortunately, during faecal collection, many patients were unable to produce a stool and thus we were unable to collect stools from all the groups. Since our primary aim was to compare the impact of fermentable substrates on microbiota composition and SCFA production between the healthy subjects and those with active and inactive colonic inflammation, we believe the use of inactive CD and active UC still yielded useful results.

Our findings suggest that different fermentable substrates affect the microbiota from individuals in healthy and diseased states differently, and that starch-entrapped microspheres induce a higher production of beneficial fermentation products and a decrease in the growth of potentially harmful gut bacteria more than FOS. Further *in vivo* studies are needed to confirm these findings and to determine whether starch-entrapped microspheres can promote gut health in healthy subjects and attenuate colonic inflammation in IBD and promote remission.

Acknowledgements

This research received no specific grant from any funding agency in the public, commercial or not-for-profit sectors.

We wish to express gratitude to Annet Maathuis for her help with the TIM-2 apparatus and SCFA analyses. D. J. R. and K. V. performed the laboratory work. D. J. R. drafted the manuscript, except for the section on microbial analysis, which was written by K. V. All the authors were actively involved in experimental design, interpretation of the results, and editing of the manuscript. Authors (D. J. R., A. K., B. R. H.) have a pending (non-issued) patent for the microsphere product. However, the product is not commercialised and the purpose of the research was to determine the effects of delayed and slowly released starch on gut bacterial composition and bacterial fermentation.

References

- Probert HM & Gibson GR (2004) Development of a fermentation system to model sessile bacterial populations in the human colon. *Biofilms* **1**, 13–19.
- Harper PH, Lee EC, Kettlewell MG, *et al.* (1985) Role of the faecal stream in the maintenance of Crohn's colitis. *Gut* **26**, 279–284.
- D'Haens GR, Geboes K, Peeters M, *et al.* (1998) Early lesions of recurrent Crohn's disease caused by infusion of intestinal contents in excluded ileum. *Gastroenterology* **114**, 262–267.
- Gibson GR & Roberfroid MB (1995) Dietary modulation of the human colonic microbiota – introducing the concept of prebiotics. *J Nutr* **125**, 1401–1412.
- Cummings JH, Christie S & Cole TJ (2001) A study of fructooligosaccharides in the prevention of travelers' diarrhea. *Aliment Pharm Therap* **8**, 1139–1145.
- Scheppach W (1994) Effects of short chain fatty acids on gut morphology and function. *Gut* **35**, S35–S38.
- Cummings JH & Englyst HN (1987) Fermentation in the human large-intestine and the available substrates. *Am J Clin Nutr* **45**, 1243–1255.
- Saemann MD, Bohmig GA, Osterreicher CH, *et al.* (2000) Anti-inflammatory effects of sodium butyrate on human monocytes: potent inhibition of IL-12 and up-regulation of IL-10 production. *FASEB J* **14**, 2380–2382.
- Cummings JH & Macfarlane GT (1991) The control and consequences of bacterial fermentation in the human colon. *J Appl Bacteriol* **70**, 443–459.
- Macfarlane GT, Gibson GR & Cummings JH (1992) Comparison of fermentation reactions in different regions of the human colon. *J Appl Bacteriol* **72**, 57–64.
- Hamaker BR, Venkatachalam M & Zhang G, *et al.* (2007) Slowly digesting starch and fermentable fiber United States patent pending 2007/0196437 A1.
- Rose DJ, Keshavarzian A, Patterson JA, *et al.* (2009) Starch-entrapped microspheres extend *in vitro* fecal fermentation, increase butyrate production, and change microbiota pattern. *Mol Nutr Food Res* **53**, S121–S130.
- Venema K, Van Nuenen HMC, Smeets-Peeters MJE, *et al.* (2000) TNO's *in vitro* large intestinal model: an excellent screening tool for functional food and pharmaceutical research. *Ernährung/Nutrition* **24**, 558–564.
- Christl SU, Katzenmaier U, Hylla S, *et al.* (1997) *In vitro* fermentation of high-amylose cornstarch by a mixed population of colonic bacteria. *J Parenter Enteral Nutr* **21**, 290–295.
- McBurney MI & Thompson LU (1989) Effect of human fecal donor on *in vitro* fermentation variables. *Scand J Gastroenterol* **24**, 359–367.
- Gibson GR, Cummings JH & Macfarlane GT (1988) Use of a three-stage continuous culture system to study the effect of mucin on dissimilatory sulfate reduction and methanogenesis by mixed populations of human gut bacteria. *Appl Environ Microbiol* **54**, 2750–2755.
- Minekus M, Smeets-Peeters M, Bernalier A, *et al.* (1999) A computer-controlled system to simulate conditions of the large intestine with peristaltic mixing, water absorption and absorption of fermentation products. *Appl Microbiol Biotechnol* **53**, 108–114.
- Kovatcheva-Datchary P, Egert M, Maathuis A, *et al.* (2009) Linking phylogenetic identities of bacteria to starch fermentation in an *in vitro* model of the large intestine by RNA-based stable isotope probing. *Environ Microbiol* **11**, 914–926.
- Jouany JP (1982) Volatile fatty acids and alcohols determination in digestive contents, silage juice, bacterial culture and anaerobic fermenter contents. *Sci Aliment* **2**, 131–144.
- Maathuis A, Hoffman A, Evans A, *et al.* (2010) The effect of the undigested fraction of maize products on the activity and composition of the microbiota determined in a dynamic *in vitro* model of the human large intestine. *J Am Coll Nutr* (In the Press).
- Stanco G, Di Meo C, Piccolo G, *et al.* (2003) Effect of storage duration of frozen inoculum to be used for the *in vitro* gas production technique in rabbit. *Ital J Anim Sci* **2**, 265–270.
- Hervas G, Frutos P, Giraldez FJ, *et al.* (2005) Effect of preservation on fermentative activity of rumen fluid for *in vitro* gas production techniques. *Anim Feed Sci Technol* **123–124**, 107–118.
- Mould FL, Klien KE, Morgan R, *et al.* (2005) *In vitro* microbial inoculums: a review of its function and properties. *Anim Feed Sci Technol* **123–124**, 31–50.
- Goldin BR & Gorbach SL (1976) The relationship between diet and rat fecal bacterial enzymes implicated in colon cancer. *J Natl Cancer I* **57**, 371–375.
- Thornton JR (1981) High colonic pH promotes colorectal cancer. *Lancet* **1**, 1081–1082.
- Inan MS, Rasoulpour RJ, Yin L, *et al.* (2000) The luminal short-chain fatty acid butyrate modulates NF- κ B activity in a human colonic epithelial cell line. *Gastroenterology* **118**, 724–734.
- Luhrs H, Gerke T, Muller JG, *et al.* (2002) Butyrate inhibits NF- κ B activation in lamina propria macrophages of patients with ulcerative colitis. *Scand J Gastroenterol* **42**, 788–796.
- Packey CD & Sartor RB (2008) Interplay of commensal and pathogenic bacteria, genetic mutations, and immunoregulatory defects in the pathogenesis of inflammatory bowel diseases. *J Intern Med* **263**, 597–606.
- Loubinoux J, Bronowicki JP, Pereira IA, *et al.* (2002) Sulfate-reducing bacteria in human feces and their association with inflammatory bowel diseases. *Microbiol Ecol* **40**, 107–112.
- Roediger WE, Duncan A, Kapaniris O, *et al.* (1993) Reducing sulfur compounds of the colon impair colonocyte nutrition: implications for ulcerative colitis. *Gastroenterology* **104**, 802–809.
- Macfarlane GT & McBain AJ (1999) The human colonic microbiota. In *Colonic Microbiota, Nutrition and Health*, pp. 1–26 [GR Gibson and MB Roberfroid, editors]. Dordrecht: Kulwer Academic Publishers.
- Conway PL (1997) Development of the intestinal microbiota. In *Gastrointestinal Microbiology*, pp. 3–38 [RI Mackie, BA White and RE Isaacson, editors]. New York: Chapman & Hall.
- Vernazza CL, Rabiou B & Gibson G (2006) Human colonic microbiology and the role of dietary intervention – introduction to prebiotics. In *Prebiotics: Development & Application*, pp. 1–28 [GR Gibson and RA Rastall, editors]. West Sussex: John Wiley & Sons, Ltd.
- Seksik P, Rigottier-Gois L, Gramet G, *et al.* (2003) Alterations of the dominant faecal bacterial groups in patients with Crohn's disease of the colon. *Gut* **52**, 237–242.
- Duncan SH, Belenguer A, Holtrop G, *et al.* (2007) Reduced dietary intake of carbohydrates by obese subjects results in decreased concentrations of butyrate and butyrate-producing bacteria in feces. *Appl Environ Microbiol* **73**, 1073–1078.

36. Reynolds JG, Silva E & McCormack WM (1983) Association of *Streptococcus bovis* with bowel disease. *J Clin Microbiol* **17**, 696–697.
37. Leport C, Bure A, Leport J, *et al.* (1987) Incidence of colonic lesions in *Streptococcus bovis* and enterococcal endocarditis. *Lancet* **1**, 748.
38. Santos-Sierra S, Golenbock DT & Henneke P (2006) Toll-like receptor-dependent discrimination of Streptococci. *J Endotoxin Res* **12**, 307–312.
39. Sartor RB (2005) Probiotic therapy of intestinal inflammation and infections. *Curr Opin Gastroenterol* **21**, 44–50.
40. de Palencia PF, Lopez P, Corbi AL, *et al.* (2008) Probiotic strains: survival under simulated gastrointestinal conditions, *in vitro* adhesion to Caco-2 cells and effect on cytokine secretion. *Eur Food Res Technol* **227**, 1475–1484.
41. Freeman HJ (2008) Recent developments on the role of *Clostridium difficile* in inflammatory bowel disease. *World J Gastroenterol* **14**, 2794–2796.
42. Sartor RB, Rath HC & Sellon RK (1996) Microbial factors in chronic intestinal inflammation. *Curr Opin Gastroenterol* **12**, 327–333.
43. Mangin I, Bonnet R, Seksik P, *et al.* (2004) Molecular inventory of faecal microflora in patients with Crohn's disease. *FEMS Microbiol Ecol* **50**, 25–36.
44. Araki Y, Andoh A, Takizawa J, *et al.* (2004) *Clostridium butyricum*, a probiotic derivative, suppresses dextran sulfate sodium-induced experimental colitis in rats. *Int J Mol Med* **13**, 577–580.
45. Darfeuille-Michaud A, Boudeau J, Bulois P, *et al.* (2004) High prevalence of adherent-invasive *Escherichia coli* associated with ileal mucosa in Crohn's disease. *Gastroenterology* **127**, 412–421.
46. Onderdonk AB, Richardson JA, Hammer RE, *et al.* (1998) Correlation of cecal microflora of HLA-B27 transgenic rats with inflammatory bowel disease. *Infect Immun* **66**, 6022–6023.
47. Schultz M (2008) Clinical use of *E. coli* Nissle 1917 in inflammatory bowel disease. *Inflamm Bowel Dis* **14**, 1012–1018.
48. De PV, Vanhoutte T & Huys G (2007) Effects of *Lactobacillus casei* Shirota, *Bifidobacterium breve*, and oligofructose-enriched inulin on colonic nitrogen-protein metabolism in healthy humans. *Am J Physiol Gastrointest Liver Physiol* **292**, G358–G368.
49. Roberfroid MB, Van Loo JAE & Gibson GR (1998) The bifidogenic nature of chicory inulin and its hydrolysis products. *J Nutr* **128**, 11–19.
50. Swidsinski A, Weber J, Loening-Baucke V, *et al.* (2005) Spatial organization and composition of the mucosal flora in patients with inflammatory bowel disease. *J Clin Microbiol* **43**, 3380–3389.
51. Bamba T, Matsuda H, Endo M, *et al.* (1995) The pathogenic role of *Bacteroides vulgatus* in patients with ulcerative colitis. *J Gastroenterol* **30**, 45–47.
52. Rogosa M (1964) Genus *Veillonella*. I. General cultural, ecological, and biochemical considerations. *J Bacteriol* **87**, 162–170.
53. Kim SC, Tonkonogy SL, Albright CA, *et al.* (2005) Variable phenotypes of enterocolitis in interleukin 10-deficient mice monoassociated with two different commensal bacteria. *Gastroenterology* **128**, 891–906.
54. Ohkusa T, Okayasu I, Ogihara T, *et al.* (2003) Induction of experimental ulcerative colitis by *Fusobacterium varium* isolated from colonic mucosa of patients with ulcerative colitis. *Gut* **52**, 79–83.