



## Reality Check 2011

Edwin van veldhoven

Daniëlle Keus

Fanny van Heemskerck

Thijs van den Brink

Jenny van Laar

# Flood Control 2015



**ARCADIS**



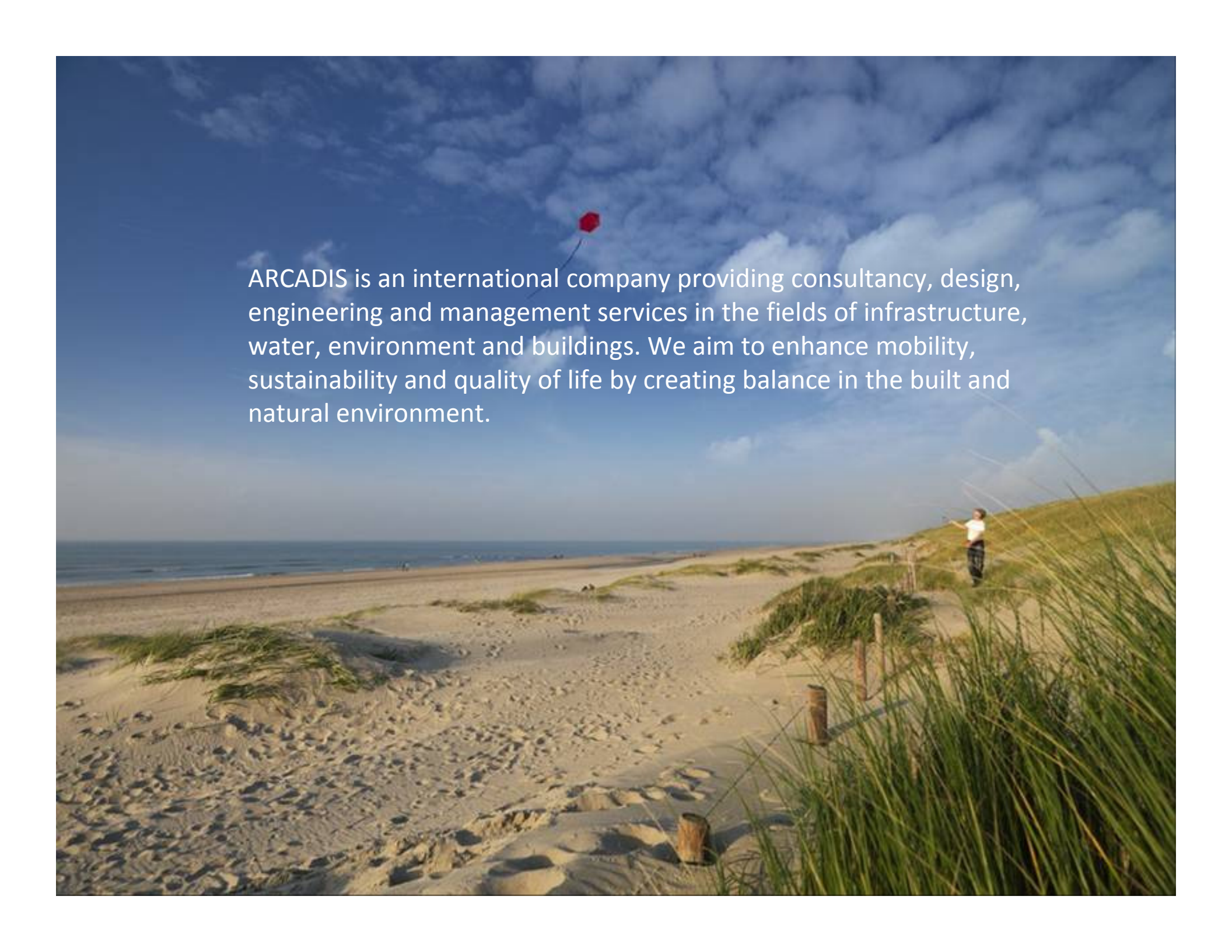
## **contents**

- › **Introduction**
- › **Floodcontrol**
- › **Objectives**
- › **Components**
- › **IMB bus**
- › **Mirecol architecture**



## **Project reality check / Flood Control 2015**

- › **The reality check is a project in the Flood Control 2015 program**
- › **Flood Control 2015: “A really substantial improvement in operational flood protection worldwide. That is the mission of Flood Control 2015.”**
- › **Flood Control: consortium of several parties**
- › **Reality check: consortium ARCADIS, TNO and BridGis**
- › **[www.floodcontrol2015.com](http://www.floodcontrol2015.com)**

A scenic photograph of a beach and dunes. In the foreground, there are sand dunes with green grasses. A person is standing on a dune in the middle ground, holding a string attached to a red kite flying in the sky. The background shows a sandy beach leading to the ocean under a blue sky with scattered white clouds.

ARCADIS is an international company providing consultancy, design, engineering and management services in the fields of infrastructure, water, environment and buildings. We aim to enhance mobility, sustainability and quality of life by creating balance in the built and natural environment.



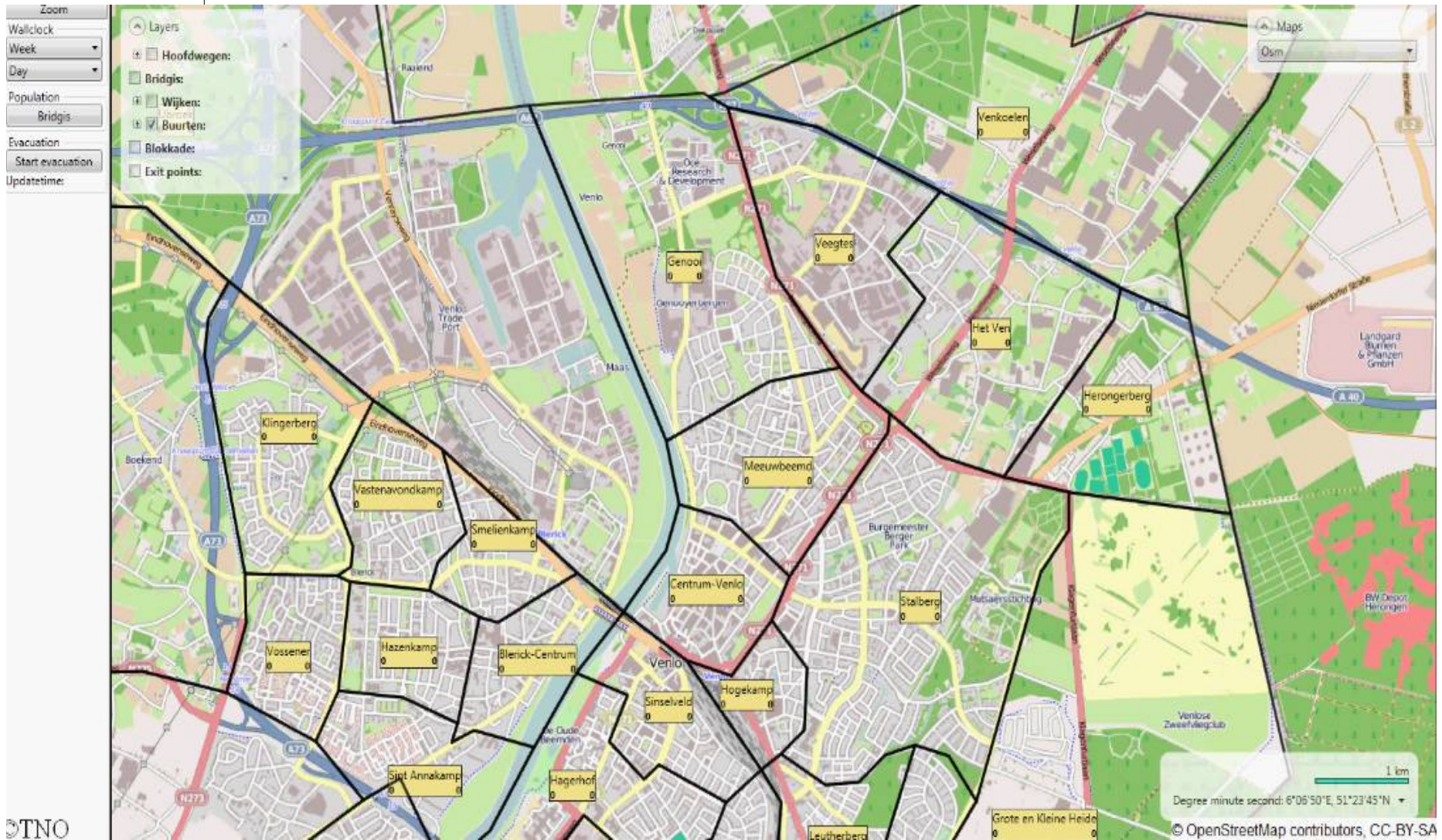
## The TNO mission

“TNO connects people and knowledge to create innovations that boost the sustainable competitiveness of industry and well-being of society”

- › Netherlands Organisation for Applied Scientific Research
- › Not for profit
- › 4500 personnel of which 1000 Defence related
- › Research for government and industry









## Objective

1. **Population density for an evacuation area**
2. **The population density is given with a distinction day/night week/weekend**







## Objective

Insight in the composition of the population (more dependent people)







## Objective

**Feasibility of the evacuation strategy, based on the population density and composition at the evacuation time**





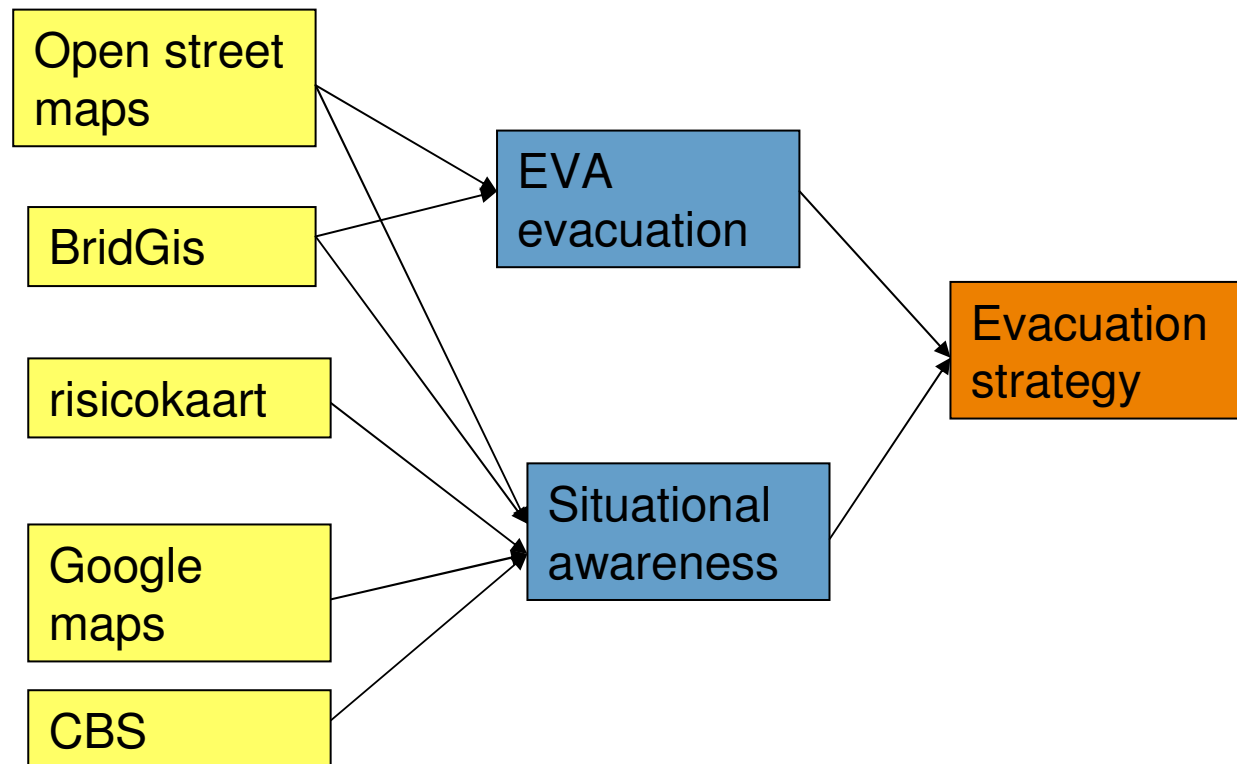
## Note

**Local expertise is still essential**



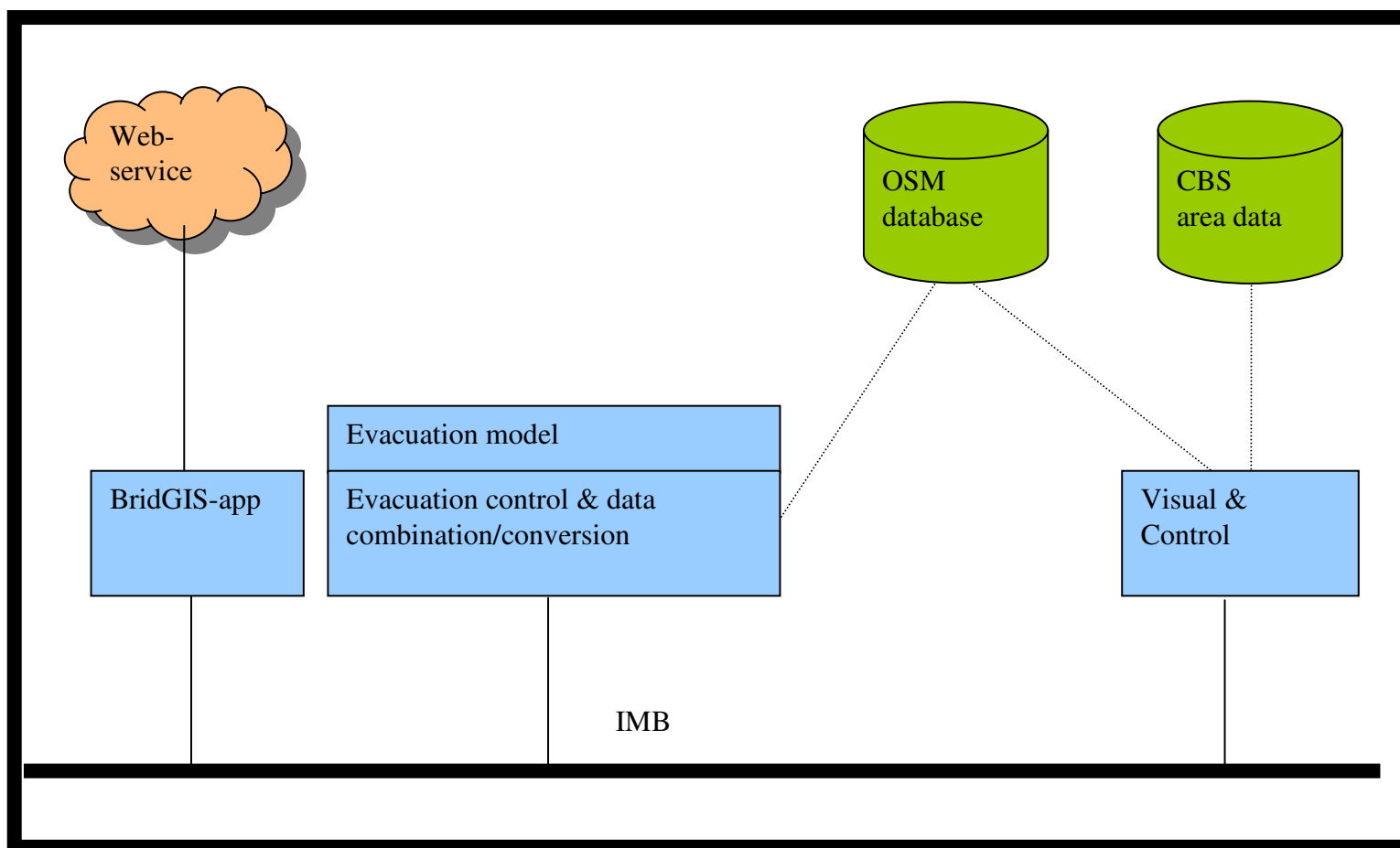


## Components





## HOW?





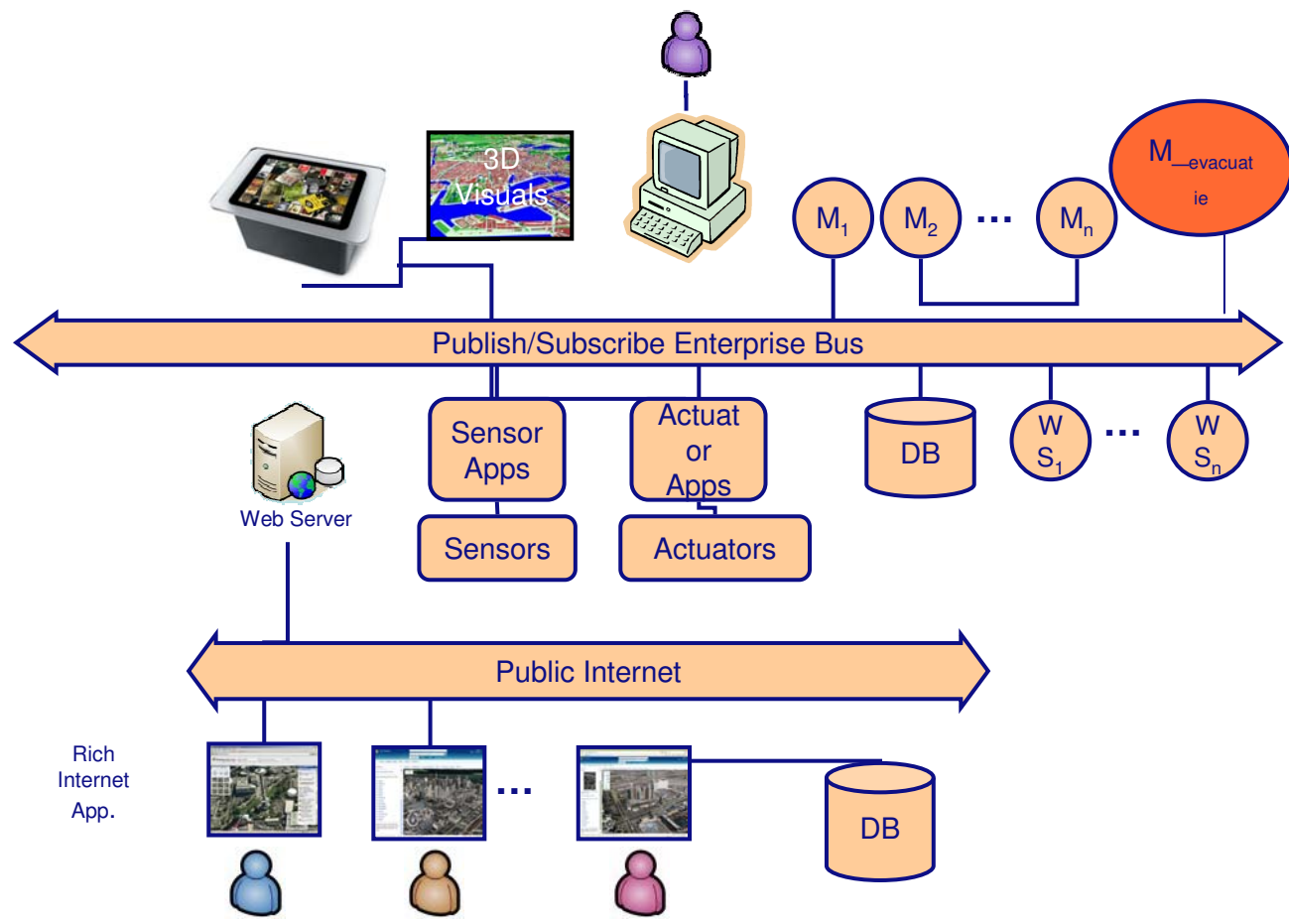


## **IMB bus**

- › **based on ideas from the HLA**
- › **as simple as possible interface between models and data**
- › **client/server communication by publish/subscribe services**



# Mirecol





**Demonstration....**



## Thank you

- › Daniëlle Keus
- › TNO Defence, Safety & Security
  
- › [danielle.keus@tno.nl](mailto:danielle.keus@tno.nl)
- › +31 888 66 1098
- › [www.tno.nl](http://www.tno.nl)

